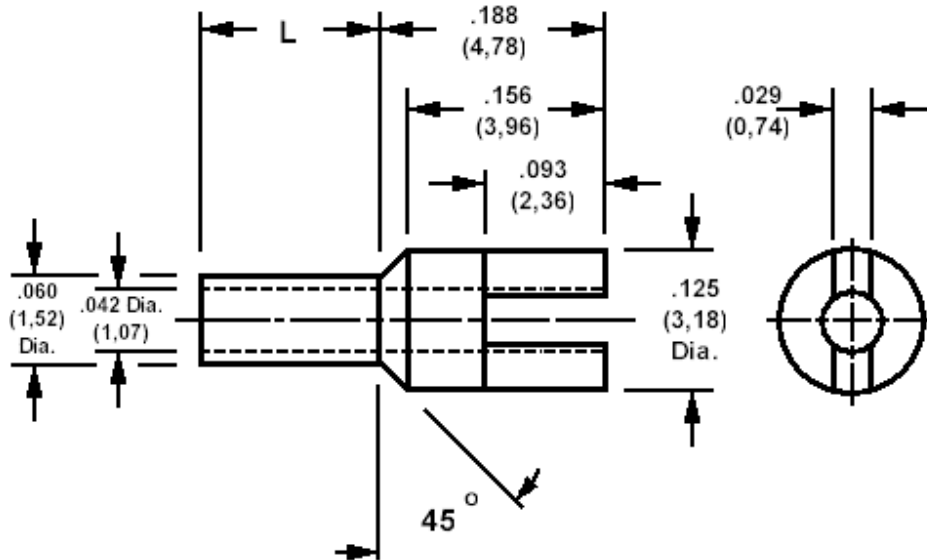


180-2752 Solder terminal, slotted, thru hole

Recommended mounting hole .064 (1,61), #52 drill



How to order code

180-2752-XX-YY-00

Basic Part No XX = L dimension, YY = Plating Finish

| DIMENSIONS (XX) | | | |
|-----------------|------|-------------|-----------------|
| Basic Part No | (XX) | L | Board Thickness |
| 180-2752 | -01 | .062 (1,57) | .031 (0,79) |
| | -02 | .094 (2,39) | .062 (1,58) |
| | -03 | .125 (3,18) | .094 (2,38) |
| | -04 | .156 (3,96) | .125 (3,18) |

| MATERIALS | | |
|-----------|----------|----------------|
| Component | Material | Finish (YY) |
| | | -05 |
| Terminal | Brass | Electro Solder |

| SWAGE TOOLING | |
|-----------------------------|-------------------|
| Recommended Swaging Tools:- | |
| Anvil | 435-6463-01-00-00 |
| Flare Punch | 435-6692-01-00-00 |