

Coaxial Low Pass Filter

DC to 825 MHz (40 dB Isolation up to 20 GHz)

NEW!
VLFX-825

Maximum Ratings

Operating Temperature -55°C to 100°C

Storage Temperature -55°C to 100°C

RF Power Input* 10W max. at 25°C

*Passband rating, derate linearly to 3.5W at 100°C ambient.

Features

- very good isolation, 40 dB up to 20 GHz
- 21 sections
- temperature stable LTCC internal structure
- patent pending
- re-entry frequency > 20 GHz
- rugged stainless steel unibody

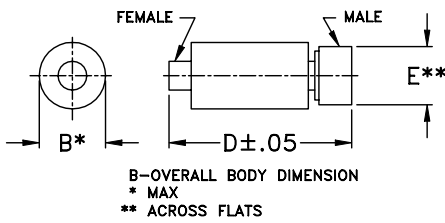


CASE STYLE: FF1118
PRICE: \$ 39.95 ea. QTY (1-9)

Applications

- harmonic rejection
- transmitters/receivers
- lab use
- test instrumentation

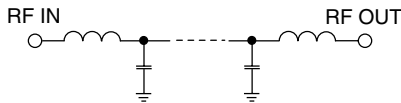
Outline Drawing



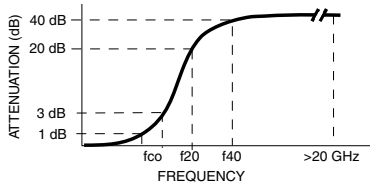
Outline Dimensions (inch/mm)

B	D	E	wt.
.39	2.67	.312	grams
9.91	67.82	7.92	17.0

Functional Schematic



Typical Frequency Response



Low Pass Filter Electrical Specifications @ 25°C

MODEL NO.	PASSBAND (MHz) (Loss < 1.2dB) Max.	fco, MHz Nom (Loss 3 dB) Typ	STOPBAND (MHz) (Loss, dB)		VSWR (:1)		NO. OF SECTIONS
			f20 Min.	f40 Typ.	Stopband Typ.	Passband Typ.	
VLFX-825	DC-825	1275	1550	1850-20000	10	1.25	21

Typical Performance Data @ 25°C

Frequency (MHz)	Insertion Loss (dB)	VSWR (:1)
50	0.21	1.04
250	0.34	1.11
500	0.56	1.09
850	0.99	1.15
950	1.19	1.15
1100	1.58	1.11
1300	3.89	1.26
1400	11.97	3.20
1475	22.09	5.16
1800	39.04	18.43
2000	62.70	27.62
3000	75.79	64.73
4000	81.73	66.53
5000	75.62	62.40
7500	72.55	42.41
10000	71.84	17.08
12500	61.43	6.17
15000	77.23	5.85
17500	68.24	21.82
20000	73.81	13.68

