

PLEASE CHECK WWW.MOLEX.COM FOR LATEST PART INFORMATION

Part Number: [0190080028](#)
Status: **Active**
Description: Flag Krimptite™ Quick Disconnect, Female, for 14-16 (2.00-1.30) Wire, Metal Strip, Tab 4.75mm (.187") x 0.51mm (.02)

Documents:

[Drawing \(PDF\)](#) [RoHS Certificate of Compliance \(PDF\)](#)

Agency Certification

CSA LR18689
 UL E79133

General

Product Family Quick Disconnects
 Series [19008](#)
 Crimp Quality Equipment Yes
 Product Name Krimptite™
 Type Quick Disconnect

Physical

Barrel Type Closed
 Gender Female
 Glow-Wire Compliant No
 Insulation None
 Lock to Mating Part None
 Material - Metal Brass
 Orientation Flag
 Packaging Type Reel
 Polarized to Mating Part No
 Tab Thickness 0.51mm (.020")
 Tab Width 4.75mm (.187")
 Temperature Range - Operating Per Wire Specification
 Wire Size AWG 14, 16
 Wire Size mm² 1.30 - 2.00

Electrical

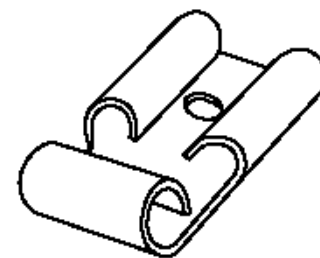
Voltage - Maximum Per Wire Specification

Material Info

Old Part Number BBZ-1148

Reference - Drawing Numbers

Sales Drawing CDFLG187, SD-19008-013



Series

image - Reference only

EU RoHS

ELV and RoHS Compliant
REACH SVHC
 Not Reviewed
Halogen-Free Status
 Not Reviewed

China RoHS



Need more information on product environmental compliance?

Email productcompliance@molex.com
 For a multiple part number RoHS Certificate of Compliance, [click here](#)

Please visit the [Contact Us](#) section for any non-product compliance questions.

Search Parts in this Series

[19008Series](#)

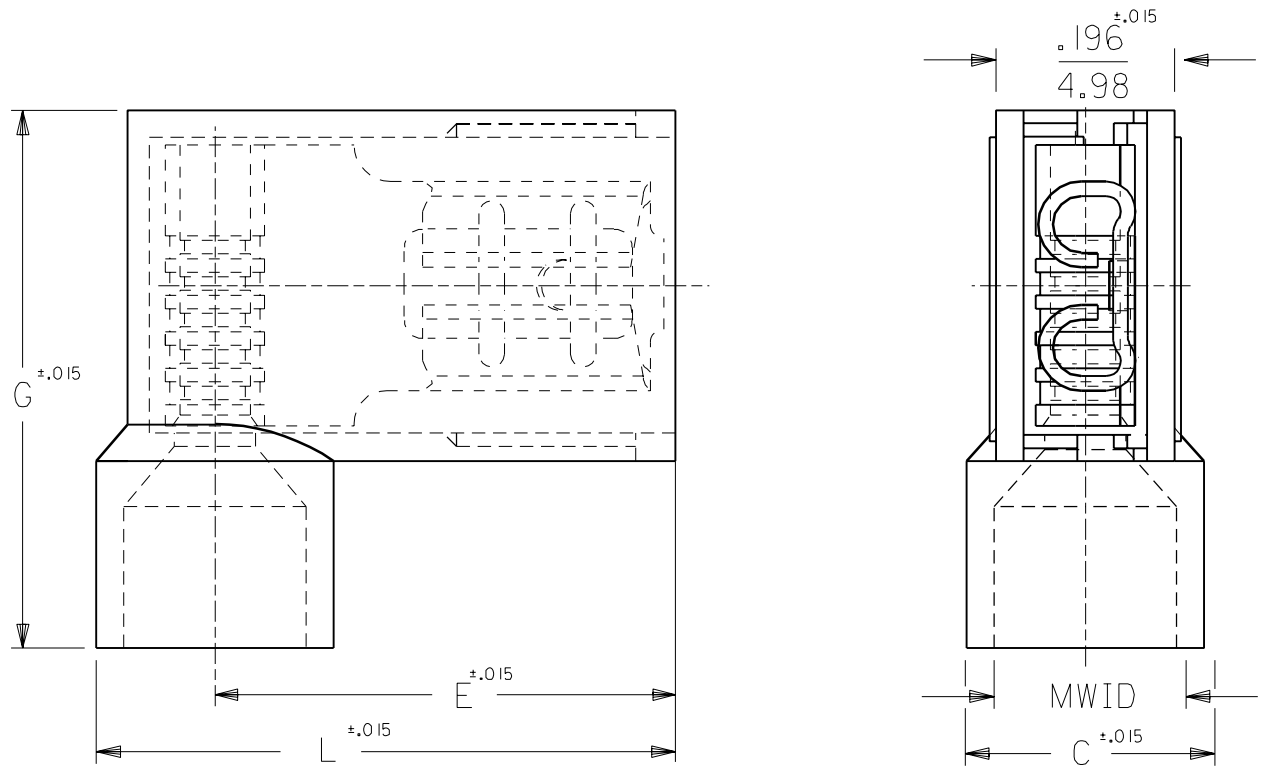
Application Tooling | [FAQ](#)

Tooling specifications and manuals are found by selecting the products below. Crimp Height Specifications are then contained in the Application Tooling Specification document.

Global

Description	Product #
ASP Perishable Tool Kit used in ASP presses that process metal strip product Rear Feed Applicator for Flag Krimptite™ Quick Disconnect Female Terminals	0190290154 0638027600

DRWG. NO. CUST. DRWG.



PART NO.	AWG	COLOR	MWID	TAB SIZE	L	G	E	C
AA-2222	22-18	RED	.176/4.47	.187x.020	.630/16.00	.585/14.86	.512/13.00	.236/5.99
AA-2222-X	22-18	RED	.240/6.10	.187x.020	.662/16.81	.625/15.88	.512/13.00	.300/7.62
AA-2223	22-18	RED	.176/4.47	.187x.032	.630/16.00	.585/14.86	.512/13.00	.236/5.99
AA-2223-X	22-18	RED	.240/6.10	.187x.032	.662/16.81	.625/15.88	.512/13.00	.300/7.62
BB-2224	16-14	BLUE	.200/5.08	.187x.020	.630/16.00	.585/14.86	.500/12.70	.260/6.60
BB-2224-X	16-14	BLUE	.265/6.73	.187x.020	.670/17.02	.625/15.88	.500/12.70	.325/8.26
BB-2225	16-14	BLUE	.200/5.08	.187x.032	.630/16.00	.585/14.86	.500/12.70	.260/6.60
BB-2225-X	16-14	BLUE	.265/6.73	.187x.032	.670/17.02	.625/15.88	.500/12.70	.325/8.26

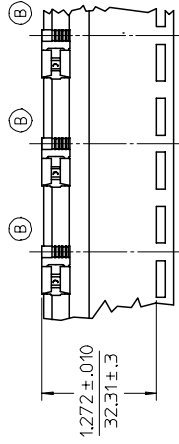
A	TWO METRIC DIM. WERE 15.75 NOW 16.00 06/05/92 RCM
LTR.	REVISIONS

NOTES:
 1. MWID = MAX. WIRE INSULATION DIA.
 2. ALL DIMENSIONS = INCHES/MM

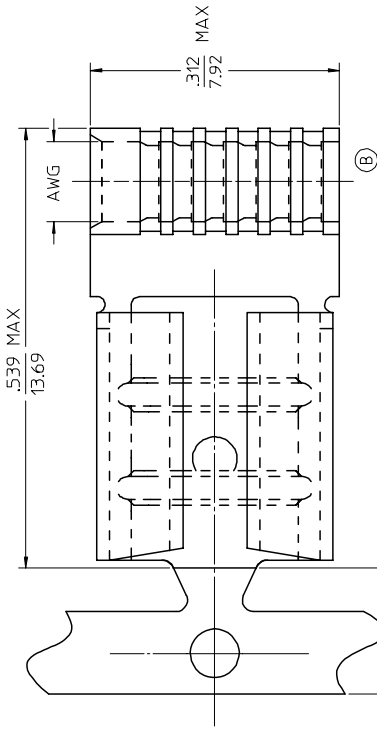
DIMENSIONS SHOWN (METRIC) INCH	
UNLESS OTHERWISE SPECIFIED TOLERANCES: ANGULAR ± 1/2°	
	INCH METRIC
3 PLACE	± .005 ± ---
2 PLACE	± .01 ± 0.13
1 PLACE	± --- ± 0.25
DRAFT WHERE APPLICABLE MUST REMAIN WITHIN DIMENSIONS	
DRWG. BY RM	CHK'D. BY JM
APP'D. BY FP	SCALE 5: 1

REVISE ONLY ON CAD SYSTEM	
TITLE FLAG FULLY INSULATED .187x.020, & .032 TAB	
PINELLAS PARK, FLA. 33781 U.S.A.	SHEET NO. DATE _____ 07/26/89
PART NO. _____	DRWG. NO. CUST. DRWG.
FILE NAME CDFLG187	THIS DRAWING CONTAINS INFORMATION THAT IS PROPRIETARY TO MOLEX-ETC INC. AND SHOULD NOT BE USED WITHOUT WRITTEN PERMISSION.
DIV. _____	SIZE A

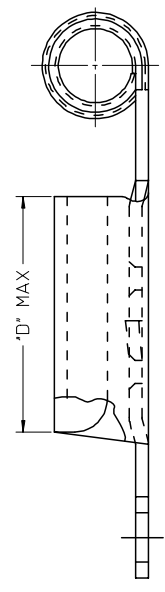
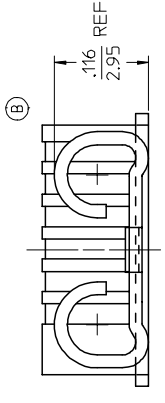
13	12	11	10	9	8	7	6	5	4	3	2	1	
J	I	H	G	F	E	D	C	B	A				
MATERIAL NUMBER ON STRIP	ENGINEERING NUMBER ON STRIP	MATERIAL NUMBER LOOSE PIECE	ENGINEERING NUMBER LOOSE PIECE	TAPE MATERIAL NUMBER	ENGINEERING NUMBER	TAB SIZE	D MAX						
190080008	AAZ-1147	190080001	AA-1147	190080004	AA-1147T	.187 X .020	.257/6.53						
190080009	AAZ-1147-032	190080002	AA-1147-032	190080003	AA-1147-032T	.187 X .032	.257/6.53						
190080013	AAZ-1158	190080006	AA-1158	190080007	AA-1158T	.250 X .032	.312/7.92						
190080028	BBZ-1148	190080019	BB-1148	190080022	BB-1148T	.187 X .020	.257/6.53						
190080029	BBZ-1148-032	190080020	BB-1148-032	190080021	BB-1148-032T	.187 X .032	.257/6.53						
190080031	BBZ-1159	190080024	BB-1159	190080027	BB-1159T	.250 X .032	.312/7.92						



PARTS ON TAPE



METAL CARRIER STRIP
 .165 REF
 4.19



SALES DRAWING

NOTES:

1. MATERIAL: BRASS .016/0.04 THICK. PLATING ELECTRO-TIN.
2. TAB SIZE SEE CHART.
3. WIRE AWG SEE CHART.
4. PART IS ROHS COMPLIANT.

QUALITY SYMBOLS	GENERAL TOLERANCES (UNLESS SPECIFIED)	DIMENSION STYLE	SCALE	DESIGN UNITS	THIRD ANGLE PROJECTION
4 PLACES ± 0.005	± .005	IN/MM	NONE	INCH	FLAG QD
3 PLACES ± .001	± .001	DATE	DATE	DATE	22-18 AWG & 16-14 AWG
2 PLACES ± .13	± .01	BENDERLE	R DEROSS	R DEROSS	.187X.020&.032,.250X.032
1 PLACE ± .25	± .01	CHECKED BY	APPROVED BY	APPROVED BY	MOLEX INCORPORATED
ANGULAR ± 1/2°		R DEROSS	R DEROSS	R DEROSS	MOLEX INCORPORATED
DRAFT WHERE APPLICABLE MUST REMAIN WITHIN DIMENSIONS	SEE CHART	MATERIAL NO.	DOCUMENT NO.	DOCUMENT NO.	SD-19008-013
		SIZE	SIZE	SIZE	1 OF 1
					1 OF 1