

PLEASE CHECK WWW.MOLEX.COM FOR LATEST PART INFORMATION

Part Number: [0350979802](#)
Status: **Active**
Description: MP-Lock™ Quick Disconnect with Vibration Support, Female, for 16-20 AWG (1.30-0.50mm²); Metal Strip, Tab 2.79 by 0.50mm (.110 by .020"), Pre-Tin Plated

Documents:

[Drawing \(PDF\)](#) [RoHS Certificate of Compliance \(PDF\)](#)
[Product Specification PS-35097-001 \(PDF\)](#)

General

Product Family	Quick Disconnects
Series	35097
Crimp Quality Equipment	Yes
Product Name	MP-Lock™
Type	Quick Disconnect

Physical

Barrel Type	Open
Gender	Female
Glow-Wire Compliant	No
Insulation	None
Lock to Mating Part	None
Material - Metal	Brass
Material - Plating Mating	Tin
Material - Plating Termination	Tin
Orientation	Straight
Packaging Type	Reel
Plating min: Mating (µin)	32.00
Plating min: Mating (µm)	0.800
Plating min: Termination (µin)	32.00
Plating min: Termination (µm)	0.80
Polarized to Mating Part	No
Tab Thickness	0.51mm (.020")
Tab Width	2.79mm (.110")
Temperature Range - Operating	-40°C to +105°C
Termination Interface: Style	Crimp or Compression
Wire Insulation Diameter	3.40mm (.134") max.
Wire Size AWG	16, 18, 20
Wire Size mm ²	0.50 - 1.30

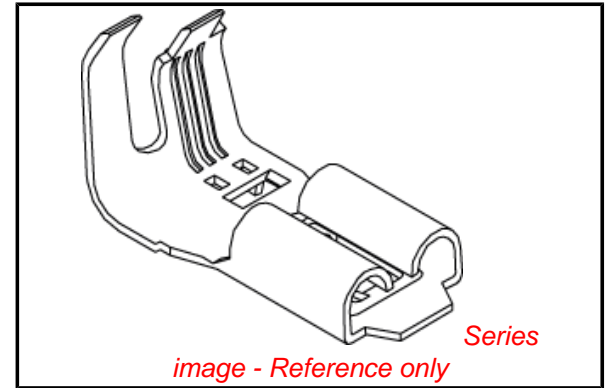
Electrical

Voltage - Maximum	250V
-------------------	------

Material Info

Reference - Drawing Numbers

Product Specification	PS-35097-001
Sales Drawing	SD-35097-9*02



EU RoHS

ELV and RoHS Compliant
REACH SVHC
Contains SVHC: No
Halogen-Free Status

China RoHS



Need more information on product environmental compliance?

Email productcompliance@molex.com
 For a multiple part number RoHS Certificate of Compliance, [click here](#)

Please visit the [Contact Us](#) section for any non-product compliance questions.

Search Parts in this Series

[35097Series](#)

Use With

2.80mm (.110") Tab

Application Tooling | FAQ

Tooling specifications and manuals are found by selecting the products below. Crimp Height Specifications are then contained in the Application Tooling Specification document.

Global

Description	Product #
Extractor Tool for MP-Lock™ Quick Disconnect Receptacle Terminals	0638135600

Japan

Description	Product #
End-Feed Applicator	0573813100

This document was generated on 04/15/2010

PLEASE CHECK WWW.MOLEX.COM FOR LATEST PART INFORMATION

DWG. NO.

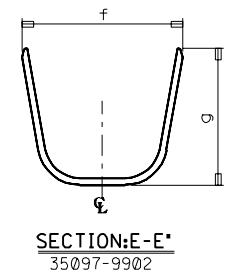
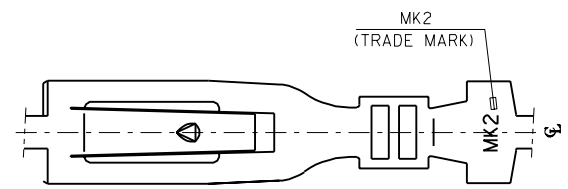
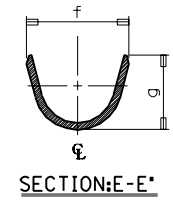
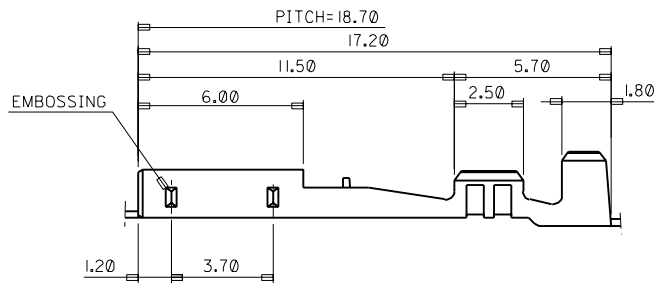
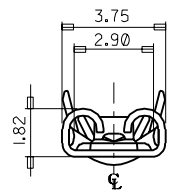
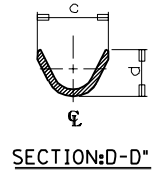
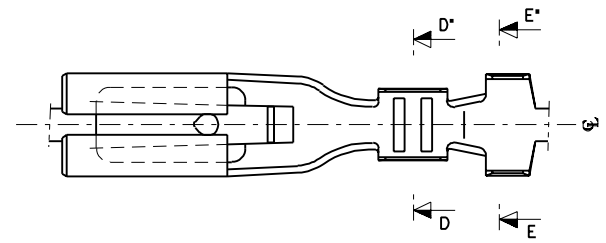
SIMILAR ITEM

PROJECT NO.

C

B

DO NOT SCALE DRAWING
DIMENSION IN METRIC



NOTES

1. MATERIAL: TIN-PLATED BRASS 0.25mm THICK'
2. FINISH: PRE-TIN PLATING
3. MATING TAB: 0.5(+) \times 2.8(w)

ENG.NO.	c	d	f	g	WIRE RANGE
35097-9702	2.0	1.85	3.3	3.0	AWG #26-#20
35097-9802	2.8	2.75	4.0	4.1	AWG #20-#16
35097-9902	2.8	2.75	5.9	5.0	AWG #20 \times 2

REVISED	EC NO. KOR1936-0083	DESCRIPTION	QUALITY SYMBOLS
	DRWN:W.YANG 96/07/09		MAJOR $\nabla = 0$
D	CHK: C.W.LEE	REV	CRITICAL $\nabla C = 0$
	APPR:		

GENERAL TOLERANCES: (UNLESS SPECIFIED)	
mm	INCH
4 PLACES $\pm 0.$	\pm
3 PLACES $\pm 0.$	\pm
2 PLACES ± 0.30	\pm
1 PLACE ± 0.30	\pm
ANGULAR: \pm °	
DRAFT WHERE APPLICABLE MUST REMAIN WITHIN DIMENSIONS	

SCALE 6:1	DESIGN UNITS <input checked="" type="checkbox"/> mm <input type="checkbox"/> INCH
DRAWN BY & DATE W.Y.YANG 96/12/02	
CHECKED BY & DATE B.K.CHOI 96/12/02	
APPROVED BY & DATE C.W.LEE 96/12/02	
CAD FILENAME S0979702.DGN	

DIMENSIONS:		SHT	REV
<input type="checkbox"/> mm <input type="checkbox"/> INCH	<input checked="" type="checkbox"/> mm ONLY		REVISE ON CAD ONLY
THIRD ANGLE PROJECTION			
TITLE: .110 MP-LOCK RECEPTACLE TERMINAL			
MATERIAL NO. SEE TABLE		SHEET NO. 10F1	
DRAWING NO. SD 35097-9*02		SIZE B	
MOLEX INCORPORATED KOREA THIS DRAWING CONTAINS INFORMATION THAT IS PROPRIETARY TO MOLEX INCORPORATED AND SHOULD NOT BE USED WITHOUT WRITTEN PERMISSION.			