

PLEASE CHECK WWW.MOLEX.COM FOR LATEST PART INFORMATION

Part Number: [0350979702](#)
Status: **Active**
Description: MP-Lock™ Quick Disconnect with Vibration Support, Female, for 20-26 AWG (0.50-0.12mm²), Metal Strip, Tab 2.79 by 0.50mm (.110 by .020"), Pre-Tin Plated

Documents:

[Drawing \(PDF\)](#) [RoHS Certificate of Compliance \(PDF\)](#)
[Product Specification PS-35097-001 \(PDF\)](#)

Agency Certification

CSA LR95446
 UL E92853

General

Product Family Quick Disconnects
 Series [35097](#)
 Crimp Quality Equipment Yes
 Product Name MP-Lock™
 Type Quick Disconnect

Physical

Barrel Type Open
 Gender Female
 Glow-Wire Compliant No
 Insulation None
 Lock to Mating Part None
 Material - Metal Brass
 Material - Plating Mating Tin
 Material - Plating Termination Tin
 Orientation Straight
 Packaging Type Reel
 Plating min: Mating (µin) 32.00
 Plating min: Mating (µm) 0.800
 Plating min: Termination (µin) 32.00
 Plating min: Termination (µm) 0.80
 Polarized to Mating Part No
 Tab Thickness 0.51mm (.020")
 Tab Width 2.79mm (.110")
 Temperature Range - Operating -40°C to +120°C
 Termination Interface: Style Crimp or Compression
 Wire Insulation Diameter 2.80mm (.110") max.
 Wire Size AWG 20, 22, 24, 26
 Wire Size mm² 0.12 - 0.50

Electrical

Voltage - Maximum 250V

Material Info

Reference - Drawing Numbers

Product Specification PS-35097-001
 Sales Drawing SD-35097-9*02

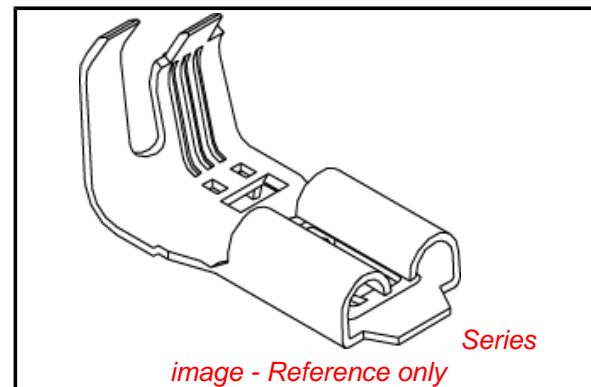


image - Reference only

EU RoHS

ELV and RoHS Compliant
REACH SVHC Contains SVHC: No
Halogen-Free Status

China RoHS



Need more information on product environmental compliance?

Email productcompliance@molex.com
 For a multiple part number RoHS Certificate of Compliance, [click here](#)

Please visit the [Contact Us](#) section for any non-product compliance questions.

Search Parts in this Series

[35097Series](#)

Use With

2.80mm (.110") Tab

Application Tooling | FAQ

Tooling specifications and manuals are found by selecting the products below. Crimp Height Specifications are then contained in the Application Tooling Specification document.

Global

| Description | Product # |
|---|----------------------------|
| Extractor Tool for MP-Lock™ Quick Disconnect Receptacle Terminals | 0638135600 |
| Hand Tool for .110 MP-Lock™ Crimp Terminals | 0638197100 |

Japan

| Description | Product # |
|-------------|-----------|
|-------------|-----------|

This document was generated on 04/15/2010

PLEASE CHECK WWW.MOLEX.COM FOR LATEST PART INFORMATION

DWG. NO.

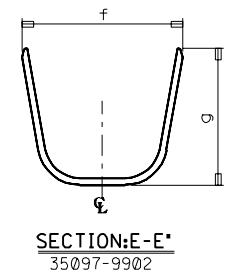
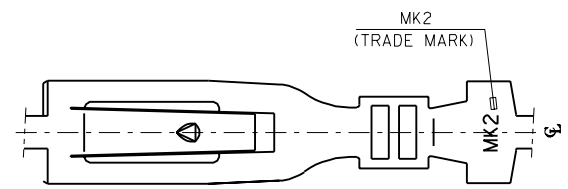
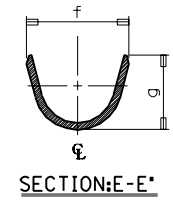
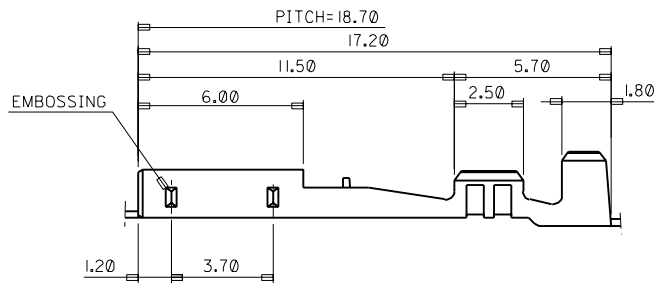
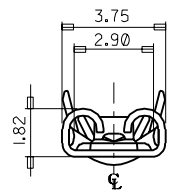
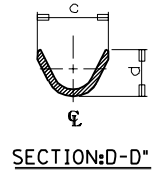
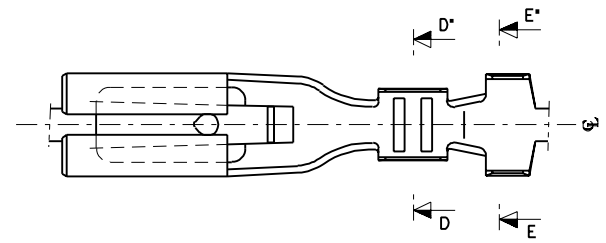
SIMILAR ITEM

PROJECT NO.

C

B

DO NOT SCALE DRAWING
DIMENSION IN METRIC



NOTES

1. MATERIAL: TIN-PLATED BRASS 0.25mm THICK'
2. FINISH: PRE-TIN PLATING
3. MATING TAB: 0.5(+) \times 2.8(w)

| ENG.NO. | c | d | f | g | WIRE RANGE |
|------------|-----|------|-----|-----|--------------------|
| 35097-9702 | 2.0 | 1.85 | 3.3 | 3.0 | AWG #26-#20 |
| 35097-9802 | 2.8 | 2.75 | 4.0 | 4.1 | AWG #20-#16 |
| 35097-9902 | 2.8 | 2.75 | 5.9 | 5.0 | AWG #20 \times 2 |

| | | | | | | | | | | | | |
|---|-------------|-------------------|---|---|--------------|---|---------------------------|---|---|-----------------------|-------|--|
| REVISED EC NO. KOR1936-0083 DRWN:W.YANG 96/07/09 CHK: C.W.LEE APPR: | DESCRIPTION | QUALITY SYMBOLS | GENERAL TOLERANCES: (UNLESS SPECIFIED) | | SCALE | DESIGN UNITS | THIRD ANGLE PROJECTION | DIMENSIONS: | | SHT | REV | |
| | | MAJOR = 0 | mm | INCH | 6:1 | <input checked="" type="checkbox"/> mm <input type="checkbox"/> INCH | | <input type="checkbox"/> mm <input type="checkbox"/> INCH | <input checked="" type="checkbox"/> mm ONLY | REVISE ON CAD ONLY | | |
| | | CRITICAL C = 0 | 4 PLACES | $\pm 0.$ | \pm | DRAWN BY & DATE W.Y.YANG 96/12/02 | | TITLE: .110 MP-LOCK RECEPTACLE TERMINAL | | | | |
| | | | 3 PLACES | $\pm 0.$ | \pm | CHECKED BY & DATE B.K.CHOI 96/12/02 | | APPROVED BY & DATE C.W.LEE 96/12/02 | | | | |
| | | 2 PLACES | ± 0.30 | \pm | CAD FILENAME | MATERIAL NO. | DRAWING NO. | SHEET NO. | | SIZE | | |
| | | 1 PLACE | ± 0.30 | \pm | S0979702.DGN | SEE TABLE | SD 35097-9*02 | 10F1 | | B | | |
| D | REV | ANGULAR: \pm ° | | DRAFT WHERE APPLICABLE MUST REMAIN WITHIN DIMENSIONS | | THIS DRAWING CONTAINS INFORMATION THAT IS PROPRIETARY TO MOLEX INCORPORATED AND SHOULD NOT BE USED WITHOUT WRITTEN PERMISSION. | | | | | MX-A3 | |