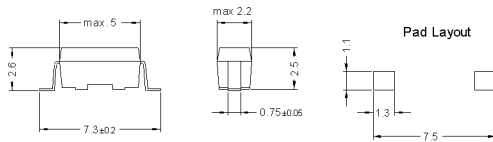
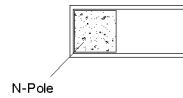


Dimensions

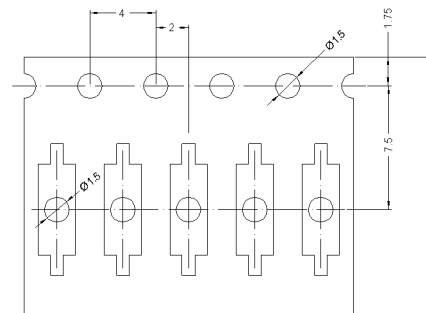


unspecified tolerances ± 0.1mm
 nicht spezifizierte Toleranzen ± 0.1mm

Marking

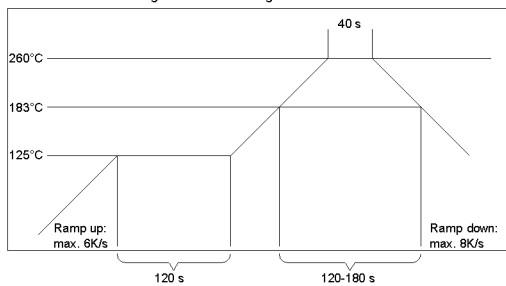


Tape and Reel Packaging (IEC 60286-3)



Lötvorschrift / soldering information

reflow soldering conditions according to JEDEC norm J-STD-020C



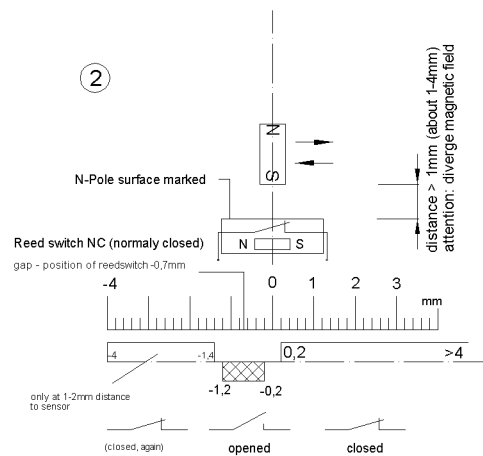
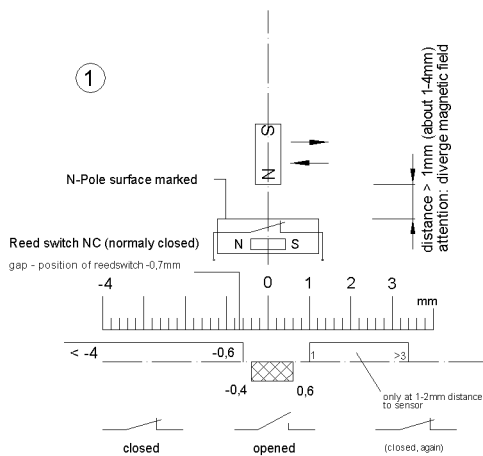
MAGNET RECOMMENDATION
 (example)

NdFeB - N35 , Ø3 x 2mm
 $M_{typ} = 1,39 \times 10E-6 \text{ Vs} \cdot \text{cm}$
 $M_{max} = 2,8 \times 10E-6 \text{ Vs} \cdot \text{cm}$

(andere Magnete sind zulässig /
 other magnets are allowable)

Magnet - Mindestabstand
 zum Sensor: 1,0 mm
 (min. distance to sensor)

direkte Berührung mit dem
 Betätigungsmagnet kann die Empfindlichkeit
 verändern !!!
 (by direct touch may be changed sensitivity)





Europe: +49 / 7731 8399 0 | Email: info@meder.com
 USA: +1 / 508 295 0771 | Email: salesusa@meder.com
 Asia: +852 / 2955 1682 | Email: salesasia@meder.com

Item No.:
9240100021
 Item:
MK24-B-2-OE

Products for tomorrow...

Magnetic properties	Conditions	Min	Typ	Max	Unit
Pull-In	at 20 °C	20		40	AT
Drop out	at 20 °C	10		35	AT
Test equipment		KMS-11 + AP74			
Pull-In in milliTesla (modified conta	MS150 - phys. caused tolerance +/- 0,1mT	1,4		3,3	mT
Test equipment		MS-150			

Contact data 04	Conditions	Min	Typ	Max	Unit
Contact - No.		04			
Contact-form		B - NC			
		Ruthenium			
Contact rating (> 9 AT)	Any DC combination of V & A not to exceed their individual max.'s			3	W
Switching voltage	DC or Peak AC			30	V
Switching current (> 9 AT)	DC or Peak AC			0,3	A
Carry current (> 9 AT)	DC or Peak AC			0,5	A
Contact resistance static (>9AT)	Measured with 40% overdrive Start value			200	mOhm
Insulation resistance	RH <45 %, 100 V test voltage	10			GOhm
Breakdown voltage (> 9 AT)	according to IEC 255-5	100			VDC

Special Product Data	Conditions	Min	Typ	Max	Unit
Housing material		mineral-filled epoxy			

Environmental data	Conditions	Min	Typ	Max	Unit
Shock	1/2 sine wave duration 11ms			30	g
Vibration	from 10 - 2000 Hz			20	g
Remark		Pick & place force should not exceed 25cN!			
Operating temperature		-40		130	°C
Storage temperature		-50		130	°C
Washability		fully sealed			
Remark		no direct touch between sensor and strong magnets!			

General data	Conditions	Min	Typ	Max	Unit
Packaging		T&R per 1000 pcs			

Modifications in the sense of technical progress are reserved

Designed at: 15.03.10 Designed by: THAUKE
 Last Change at: 22.11.10 Last Change by: THAUKE

Approval at: 20.08.10 Approval by: JHEYDER
 Approval at: 24.11.10 Approval by: JHEYDER

Version: 3