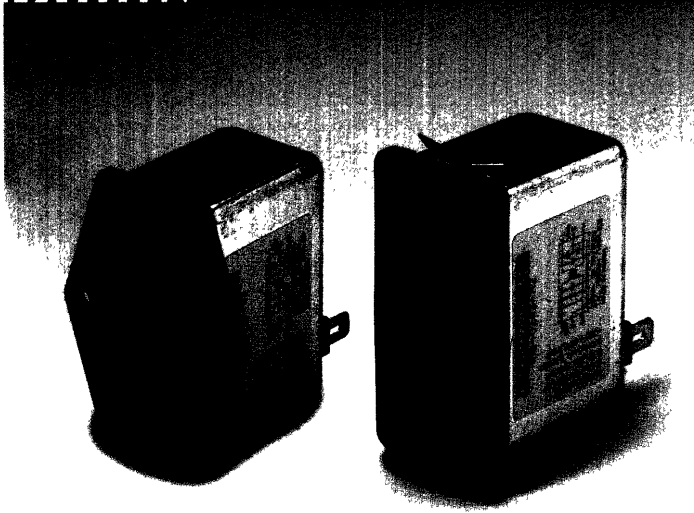


# Switched and Fused Inlet Filters



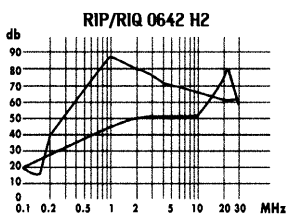
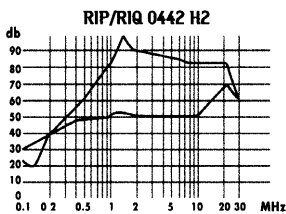
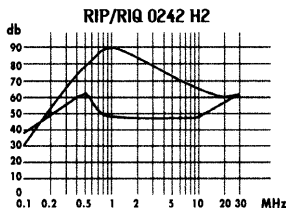
Rated Voltage: 250VAC  
 Frequency: 50/60Hz  
 Temperature Range: -25°C ~ +85°C

Available in both screw fixed or snap in versions these inlet filters have a fuseholder and a double pole ON/OFF switch. They have a good performance for both common mode and differential mode interference, with a metal case to give a good shielding effect.

Meets overvoltage category II of IEC 664 and complies with IEC 950.

Typical applications are communications equipment, digital equipment, measuring and testing instruments, monitors and display units.

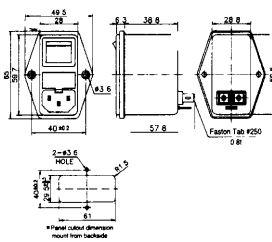
## Insertion Loss Curves



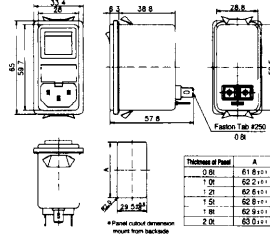
■ - Common Mode  
 ■ - Differential Mode

## Dimensions

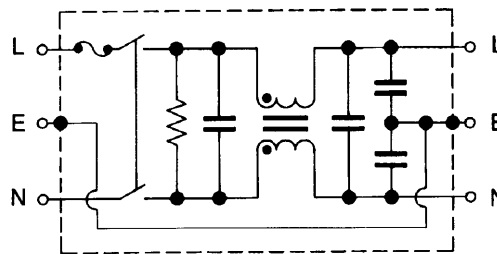
### RIP Series (Screw Fixed)



### RIQ Series (Snap In)



## Electrical Schematic



## Technical Data

Type	Current @ 40°C	Max leakage current @ 250V AC 50HZ	Terminations
RIP/RIQ 0242 H2	2A	0.35mA	Faston Tags
RIP/RIQ 0442 H2	4A	0.35mA	Faston Tags
RIP/RIQ 0642 H2	6A	0.35mA	Faston Tags

