

THYRISTOR STACK (BRIDGE STACK)

TOSHIBA (DISCRETE/OPTO)

39 DE 9047250 0002359 8

1. STUD TYPE STACK

3-PHASE BRIDGE

SF300L6A1, SF300U6A2

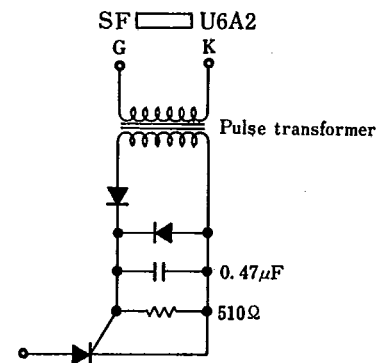
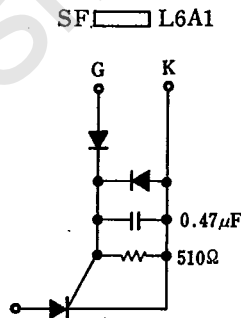
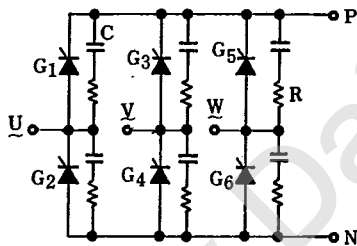
The SF300L6A1 series is a thyristor stack for 3-phase bridge control. It can be simply composed for 3-phase control if a 3-phase gate circuit is connected.

Current capacities for lines on a 220-V/440-V input voltage are available. It is most suitable for thyristor-inverter power supply, DC motor control, DC constant-voltage and constant-current control.

MAXIMUM RATING

Type	Line Voltage V _{RMS} (V _{rms})	Repetitive Peak Off-State Voltage and Reverse Voltage V _{DRM} , V _{RRM} (V)	Output Current I _o (A) T _a =60°C		Peak One-Cycle Surge Current (Non-Repetitive) I _{TSM} (A)	
			Free Convection	Air Velocity 5m/s	1 Cycle	10 Cycle
SF16L6A1	220	800	21	35	200	110
SF30L6A1	220	800	43	70	600	330
SF50L6A1	220	800	66	130	1000	560
SF80L6A1	220	800	110	210	1600	1300
SF80U6A2	440	1600				
SF150L6A1	220	800	200	350	3200	1800
SF150U6A2	440	1600				
SF300L6A1	220	800	220	500	5000	3100
SF300U6A2	440	1600				

Note : 1. Circuit Diagram



The stack with fuse is coded to the SF 6A3 series.

THYRISTOR STACK (BRIDGE STACK)

TOSHIBA (DISCRETE/OPTO)

39 DE 9097250 0002360 4

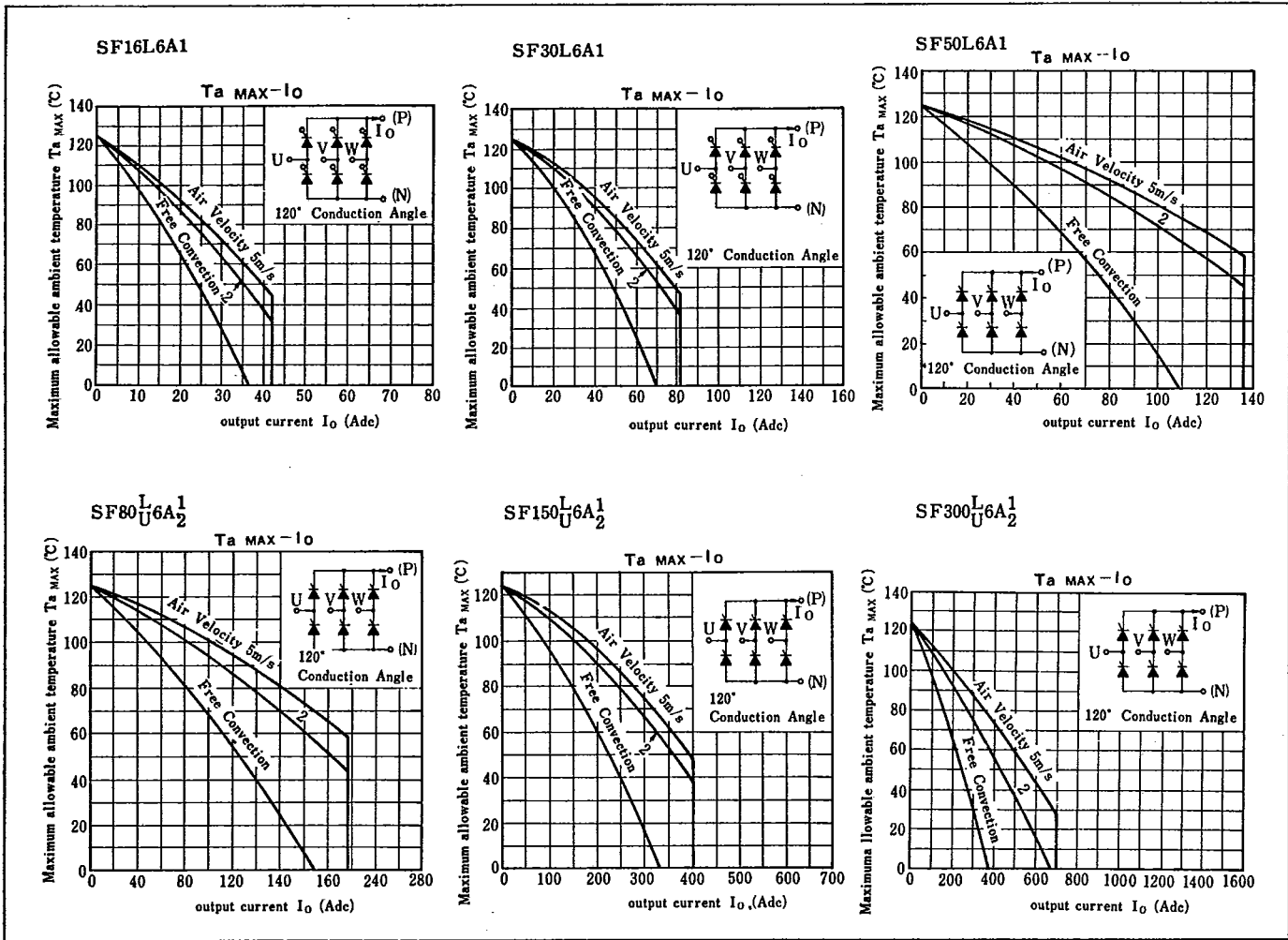


TABLE OF DIMENSIONS

Unit in mm

Type	L (MAX.)	L ₁	t	W (MAX.)	W ₁	H (MAX.)	H ₁	d	E
SF16L6A1	212	96	6	307	287	170	50	6.5	4.5
SF30L6A1	212	96	8	307	287	210	100	6.5	6.5
SF50L6A1	212	96	8	307	287	210	100	6.5	6.5
SF80 1/2 6A1	246	113	8	370	350	230	115	6.5	6.5
SF150 1/2 6A1	316	148	10	430	410	270	130	8.5	8.5
SF300 1/2 6A1	316	148	10	430	410	270	130	8.5	8.5

