

Isolation Transformer for Lan-Ethernet Applications

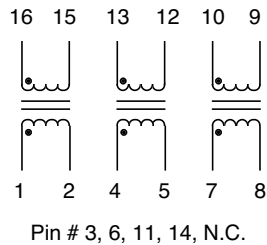
EPA1216G

- 2000 Vrms Isolation
- Operating Temperature : -55°C to +125°C
- Also available in DIP Package

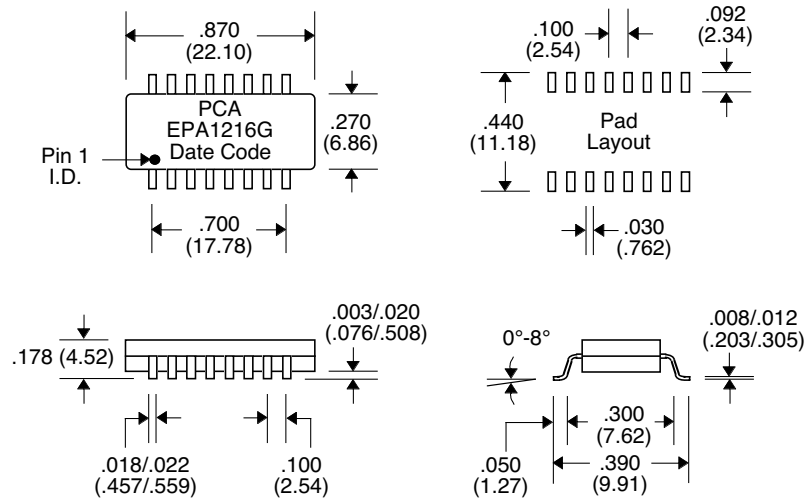
Electrical Parameters @ 25° C

Primary Inductance ($\mu\text{H} \pm 20\%$)	Interwinding Capacitance (pF Max.)	Leakage Inductance (μH Max.)	Primary ET ($\text{V}\mu\text{S}$ Min.)	Primary DCR (Ω Max.)	Turns Ratio ($\pm 5\%$)	Rise Time (nS Max.)
75	8	0.2	2.5	0.25	1:1	3

Schematic



Package



Unless Otherwise Specified Dimensions are in Inches /mm $\pm .010$ / .25