



TAI-SAW TECHNOLOGY CO., LTD.

No. 3, Industrial 2nd Rd., Ping-Chen Industrial District,
Taoyuan, 324, Taiwan, R.O.C.

TEL: 886-3-4690038 FAX: 886-3-4697532

E-mail: tstsales@mail.taisaw.com Web: www.taisaw.com

Approval Sheet For Product Specification

Issued Date:

Product Name: IF SAW Filter 140 MHz (SMD 13.3mmX6.5mm)

TST Parts No.:TB0438A

Customer Parts No.:_____

| |
|---------------------|
| Company: _____ |
| Division: _____ |
| Approved by : _____ |
| Date: _____ |

Checked by: _____ Andy Lee

Approval by: _____ Francis Chen

Date: _____ 2007/01/05



TAI-SAW TECHNOLOGY CO., LTD.

No. 3, Industrial 2nd Rd., Ping-Chen Industrial District,
Taoyuan, 324, Taiwan, R.O.C.

TEL: 886-3-4690038 FAX: 886-3-4697532

E-mail: tstsales@mail.taisaw.com Web: www.taisaw.com

IF SAW Filter 140 MHz SMD 13.3mmX6.5mm

MODEL NO.: TB0438A

Rev. No. 1

A. MAXIMUM RATING:

1. Operating Temperature: -5 °C ~ +85 °C
2. Storage Temperature: -55 °C ~ +80 °C
3. Input Power Level: 10dBm

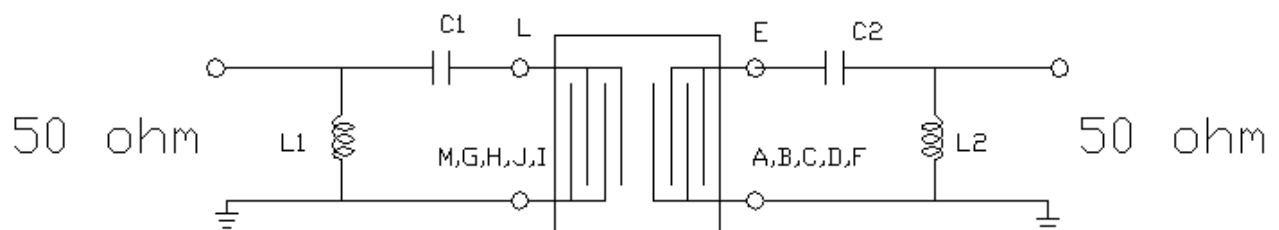
RoHS Compliant
Lead free
Lead-free soldering

B. Characteristics :

1. Ambient Temperature: 25 °

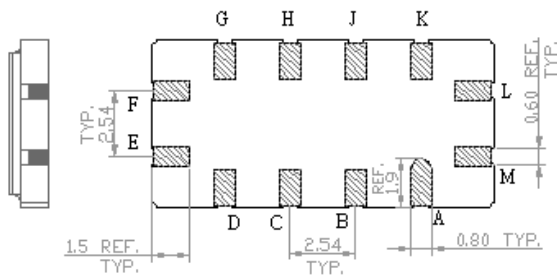
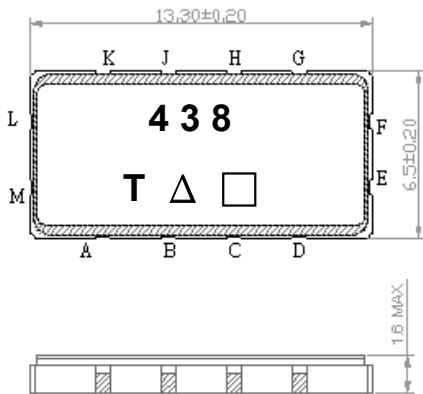
| Characteristics | Value | | | Note. |
|---|-------|-------|------|-------|
| | Min. | Typ. | Max. | |
| Center frequency F_c MHz | - | 140.0 | - | - |
| Maximum Insertion loss I.L. dB | - | 8.5 | 10.5 | - |
| 1dB Bandwidth MHz | 9.6 | 12.4 | - | - |
| 3dB Bandwidth MHz | 12.0 | 14.7 | - | - |
| 40dB Bandwidth MHz | - | 25.5 | 40.0 | - |
| Passband Ripple ($F_c \pm 4.8\text{MHz}$) MHz | - | 0.7 | 1.0 | - |
| Group Delay Ripple ($F_c \pm 4.8\text{MHz}$) nS | - | 75 | 160 | - |
| Temp Coefficient ppm/° C | - | -94 | - | - |

C. TEST FIXTURE :



$$L1=47\text{nH} \quad C1=56\text{pF} \quad L2=47\text{nH} \quad C2=120\text{pF}$$

C.OUTLINE DRAWING:



Pin configuration

- #L RF Input
- #M RF Input ground
- #E RF Output
- #F RF Output ground
- #A,#B,#C,#D,#G,#H,#J,#K To be ground
- : Week Code (Follow the table from planner each year)
- Unit : mm
- △ : Product / Year Code

| | | | | |
|--------------|--------------|--------------|--------------|--------------|
| Year | 2005 2009 | 2006 2010 | 2007 2011 | 2008 2012 |
| Product Code | B | b | <u>B</u> | <u>b</u> |

D. Frequency Characteristics :

1. S21 Response

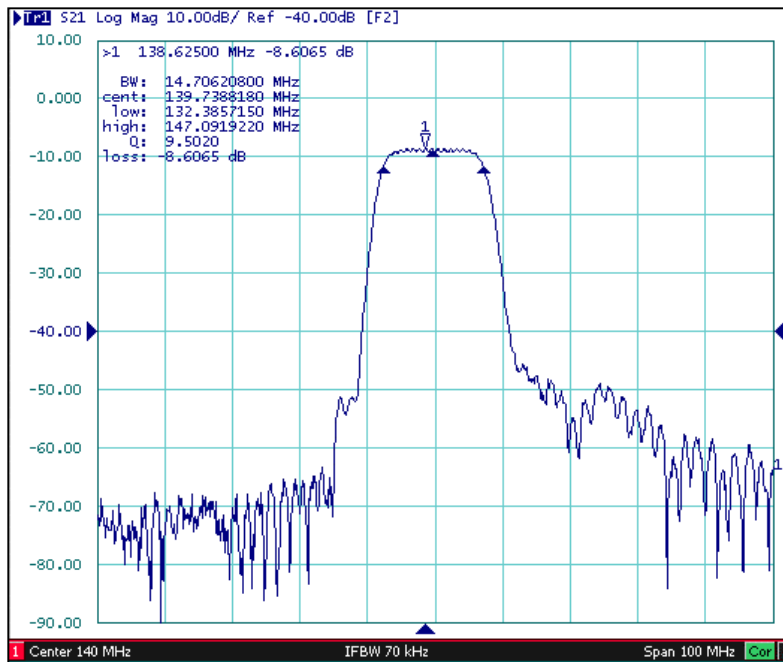


Fig1. Horizontal: 100MHz/Div Vertical: 10dB/Div

2. Pass band Ripple and Group Delay Ripple

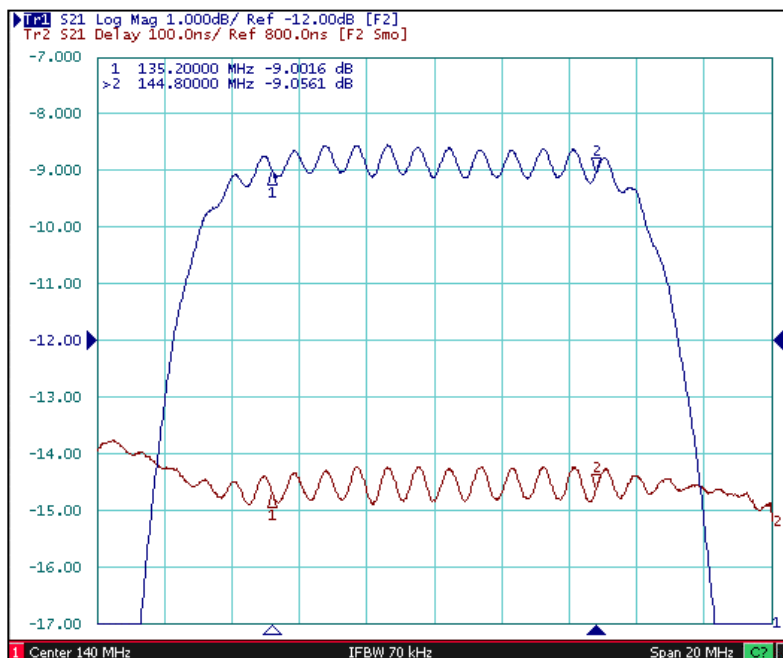
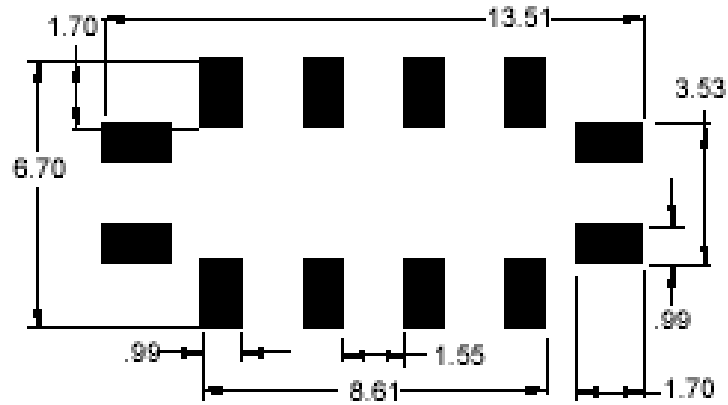


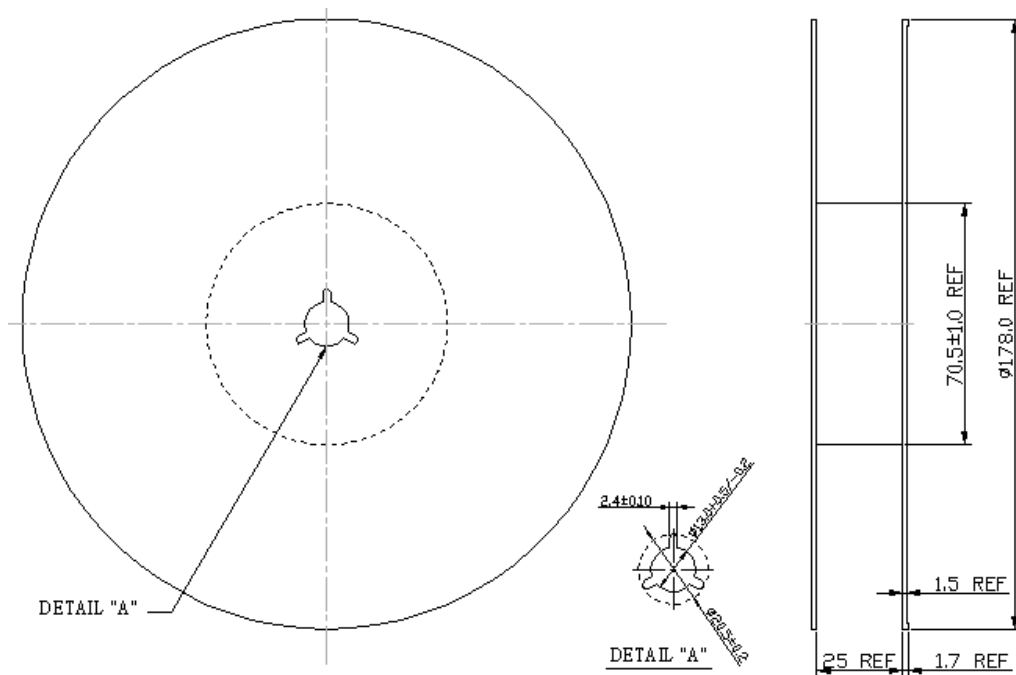
Fig2. Horizontal: 2MHz/Div; Vertical: 1dB/Div,
Vertical: 100nS/Div,

F. PCB FOOTPRINT



G. PACKING:

1. REEL DIMENSION



2. TAPE DIMENSION

