

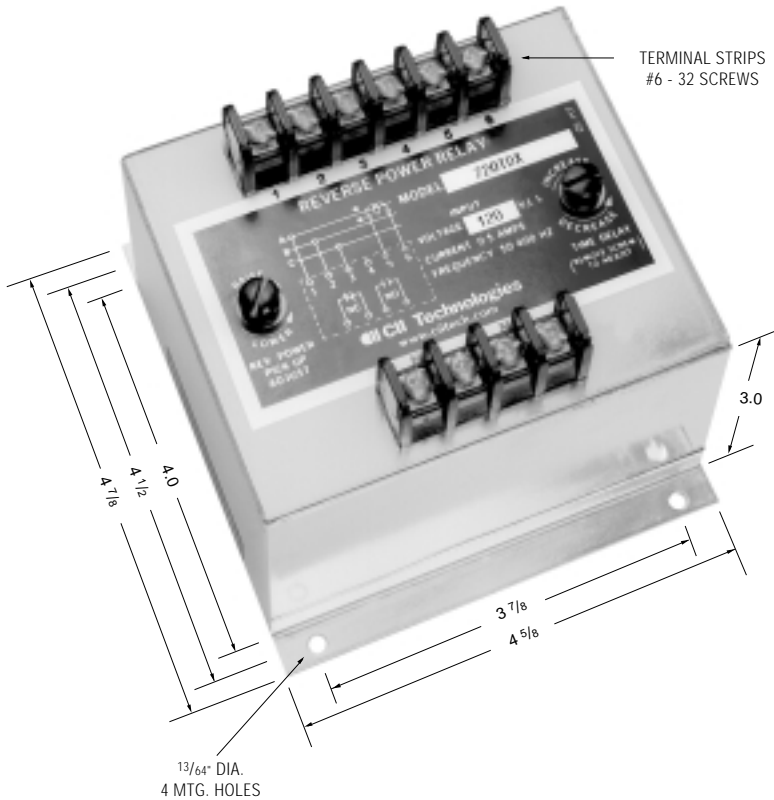
WILMAR™ Protective Relays – 700 Series w/ Adjustable Time Delay

Function: 32

- ANSI/IEEE C37.90-1978
- UL file No. E58048
- CSA file No. LR61158

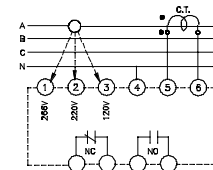


Several types of Reverse Power Relays are available including relays sensitive to reverse reactive power (KVAR). WILMAR is the leading brand of reverse power relays. Our rugged sealed construction provides continuous and reliable operation unaffected by shock, vibration or other severe environments. Reverse Power Relays are used for the protection of generator sets operating in parallel.



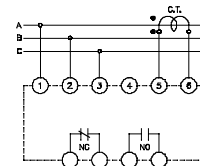
Note: Dimensions in inches. Multiply values by 25.4 for dimensions in mm.

Model 710TD



Designed for 120, 220 or 266 volt line to neutral connection

Model 720TD (X) thru 724TD (X)



For operation on three phase, three wire

PRODUCT SPECIFICATIONS

Part Number	700TD Series
Line Voltage	Model 710TD = 120 V, 220 V or 266 V, line to neutral Model 730TD = 120 V, 230 V, 380 V, 460 V, L-L, 3 Phase or 120 V, Single Phase, L-N All models for three phase, three wire sensing are available, see part number selection
Line Frequency	50-500 Hz.
Current Requirements	0 to 5 amp max direct or from CT with 5 amp secondary
Trip Adjustment	Screwdriver adjustable 4% to 20% (of the 5 amp rating)
Time Delay Adjustment	0.5 to 20 seconds, screwdriver adjustable
Output Contacts	One set N.O., one set N.C.
Contact Ratings	5 amp resistive at 120 AC or 28 Vdc
Power Consumption	Voltage circuit: 2 VA max. Current circuit: 4 VA max.

Notes:

1. Remove screw for access to the pick-up and time delay adjustments.
2. Clockwise rotation of the pick-up adjustment will raise the reverse trip point.
3. Clockwise rotation of the time adjustment will increase the time delay.
4. Polarity of the voltage and the current connections must be observed for true power sensing.
5. Interchanging connections on terminals 5 and 6, will cause the output contacts to pick-up on forward power and dropout on no power or reverse power.

PART NUMBER SELECTION

Sample Part No. 720TDX

Type:

- 710TD = 120V, 220V, 266V line to neutral
- 720TD = 120V, L-L, 3 Phase
- 721TD = 230V, L-L, 3 Phase
- 722TD = 380V, L-L, 3 Phase
- 723TD = 460V, L-L, 3 Phase
- 724TD = 575V, L-L, 3 Phase
- 725TD = 416V, L-L, 3 Phase
- 730TD = 120 V, 230 V, 380 V, 460 V, L-L, 3 Phase or 120 V, Single Phase, L-N

Mounting:

- X = Flange
- Blank - Stud

Options:

- 7 = Reverse Inductive, 60 Hz

Consult factory for additional models.