

PLEASE CHECK WWW.MOLEX.COM FOR LATEST PART INFORMATION

Part Number: **0504457025**
Status: **Active**
Description: Ring Tongue Double Hole Terminal for 250 - 300MCM AWG, Closed Uninsulated Brazed Barrel, Stud Size 1/2" (M12), Oxygen-Free Copper, Length 106.00mm (4.173")

Documents:

[Drawing \(PDF\)](#) [RoHS Certificate of Compliance \(PDF\)](#)
[Product Specification PS-50442-001 \(PDF\)](#)

General

Product Family	Ring and Spade Terminals
Series	<u>50445</u>
Crimp Quality Equipment	Yes
Mil-Spec	N/A
Product Name	RD (Double-Hole)
Type	Ring

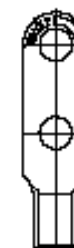
Physical

Barrel Type	Closed - Brazed
Insulation	None
Material - Plating Mating	Tin
Packaging Type	Bag
Plating min: Mating (µin)	40
Plating min: Mating (µm)	1
Plating min: Termination (µin)	40
Plating min: Termination (µm)	1
Stud Size	1/2" (M12)
Termination Interface: Style	Crimp or Compression
Wire Size AWG	250MCM, 300MCM
Wire Size mm ²	117.2 - 152.05

Material Info

Reference - Drawing Numbers

Product Specification	PS-50442-001
Sales Drawing	SD-50445-001



Series

image - Reference only

EU RoHS

ELV and RoHS Compliant
REACH SVHC
 Not Reviewed
Halogen-Free Status
 Not Reviewed

China RoHS



Need more information on product environmental compliance?

Email productcompliance@molex.com
 For a multiple part number RoHS Certificate of Compliance, [click here](#)

Please visit the [Contact Us](#) section for any non-product compliance questions.

Search Parts in this Series

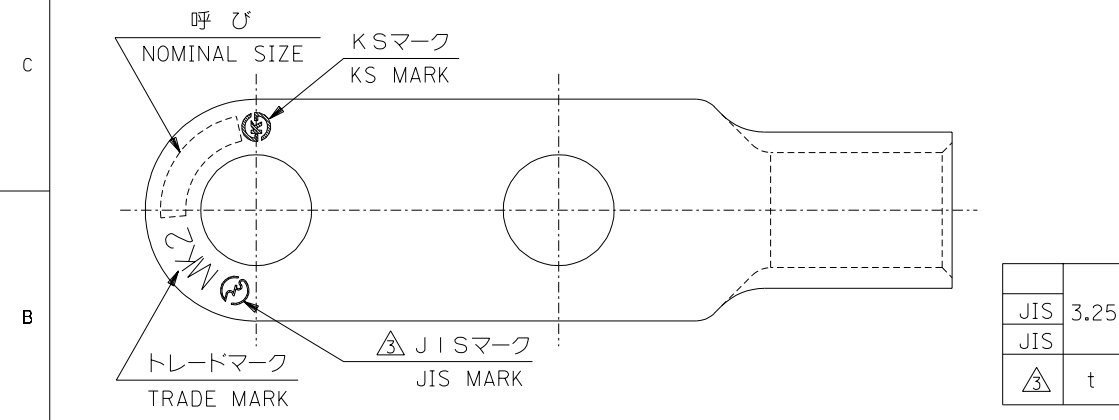
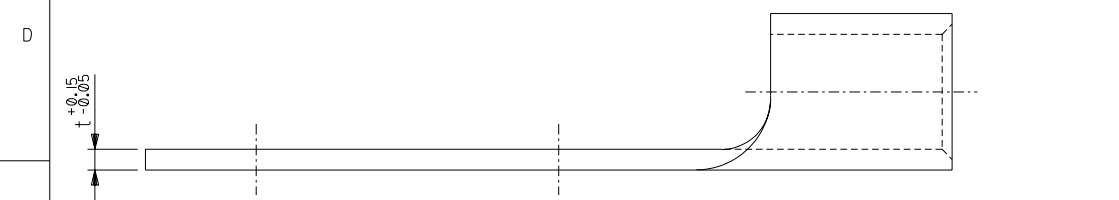
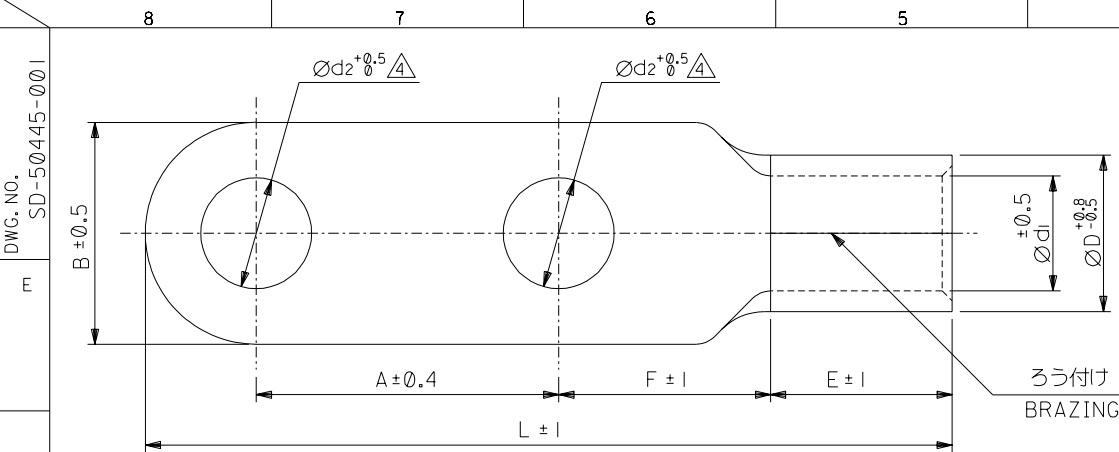
50445Series

Application Tooling | FAQ

Tooling specifications and manuals are found by selecting the products below. Crimp Height Specifications are then contained in the Application Tooling Specification document.

Japan

Description	Product #
Tool Kit For 57343-9012	<u>0573439001</u>
Battery Type Hand Crimper For JIS Terminal	<u>0573439004</u>



注記 NOTES

- 材質 MATERIAL
 端子: 無酸素銅、スズメッキ
 TERMINAL: OXYGEN FREE COPPER, TIN PLATING
 ろう付け部: りん銅ろう
 PART OF BRAZING: COPPER PHOSPHORUS
 BRAZING FILLER METALS
- 適用電線 APPLICABLE WIRE RANGE

単線 SOLID WIRE	撚線 STRANDED WIRE
11.68-13.8 mm	117.2-152.05 mm ²

- JIS認定品にのみ刻印。
 DIE STAMPED MARK IS ALLOWED ONLY FOR JIS FILED PRODUCTS.
- 呼びRD150-X (製品番号50445-7225) は穴無し品。
 NOMINAL SIZE RD150-X (MATERIAL NO. 50445-7225) IS WITHOUT HOLE VERSION.

					≠			≠	≠		X	△50445-7225
JIS	3.25	19.5	26.5	27	21	106	36	40	16	RD150	14	50445-7125
JIS									14		12	50445-7025
△	t	Ød1	ØD	E	F	L	B	A	Ød2	呼び NOMINAL SIZE		MATERIAL NO.

DO NOT SCALE DRAWING

164 NO. DRWN: CH'K: APPR:	163 NO. DRWN: CH'K: APPR:	162 NO. DRWN: CH'K: APPR:	161 NO. DRWN: CH'K: APPR:	RELEASED 160 NO. J2003-3220 DRWN: T.KAIHO 03/06/20 CH'K: T.ITO APPR: T.O.YAMAGUCHI
---------------------------------	---------------------------------	---------------------------------	---------------------------------	--

MATERIAL 材料	注記参照 SEE NOTES
FINISH 仕上げ	注記参照 SEE NOTES
WIRE RANGE 適用電線範囲	—
INS. RANGE 被覆外径	—

GENERAL TOLERANCES: (UNLESS SPECIFIED) 一般公差	SCALE —	DESIGN UNITS <input checked="" type="checkbox"/> mm <input type="checkbox"/> INCH
10 UNDER 未満	±0.2	DRAWN BY & DATE T.KAIHO 03/06/20
10 OVER 以上	±0.25	
30 OVER 以上	±0.3	
ANGLE 角度	±3°	CHECKED BY & DATE T.ITO 03/06/23
		APPROVED BY & DATE T.O.YAMAGUCHI 03/06/23
		CAD FILENAME SD50445001.S01

MODEL NO. 50445-7*25	DIMENSIONS: <input type="checkbox"/> mm <input type="checkbox"/> INCH <input checked="" type="checkbox"/> mm ONLY	SHT 1	REV 1
TITLE: RING TERMINAL(銅線用裸圧着端子)			
MOLEX MOLEX INCORPORATED			
MATERIAL NO. SEE CHART	DRAWING NO. SD-50445-001	SHEET NO. 1 OF 1	
THIS DRAWING CONTAINS INFORMATION THAT IS PROPRIETARY TO MOLEX INCORPORATED AND SHOULD NOT BE USED WITHOUT WRITTEN PERMISSION.			
	SIZE B		