

Monolithic crystal filter

MQF60...90.0-1500/A



Application

- 6 pol filter
- antenna filter
- use in mobile and stationary transceivers

Limiting values		Unit	Value
Center frequency	f_0	MHz	60.0...90.0
Insertion loss		dB	≤ 5.0
Pass band at 3.0 dB		kHz	± 7.50
Ripple in pass band	$f_0 \pm 5.00$ kHz	dB	≤ 1.0
Stop band attenuation	$f_0 \pm 25$ kHz	dB	≥ 20
	$f_0 \pm 60$ kHz	dB	> 60 except spurious
Alternate attenuation		dB	> 80 except spurious

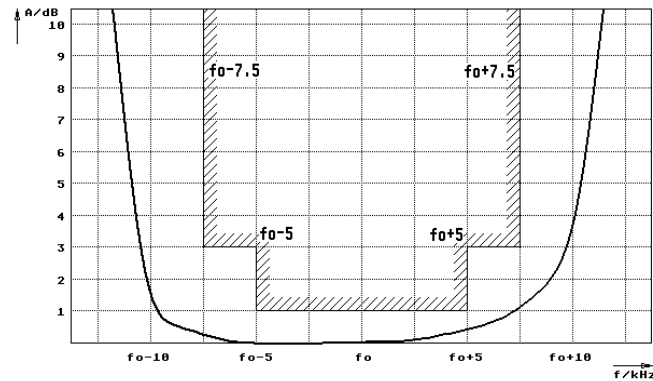
Note: The center frequency is determined by the customer

Terminating impedance Z			
R1 C1		Ohm/pF	50 0
R2 C2		Ohm/pF	50 0

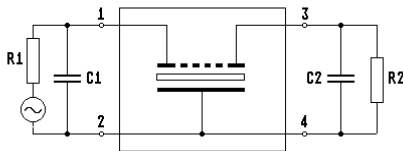
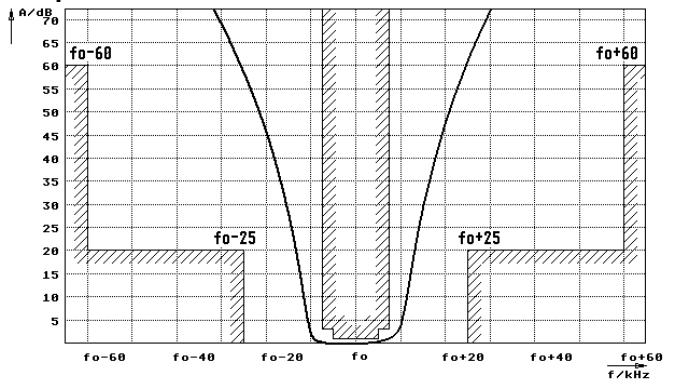
Operating temp. range		° C	-20... +70
-----------------------	--	-----	------------

Characteristics MQF60...90.0-1500/A

Pass band



Stop band



- Pin connections:
- 1 Input
 - 2 Ground-Input
 - 3 Output
 - 4 Ground-Output

