

## APPLICATIONS

The total access case covers all applications requiring a stylish, high quality desk top case for instruments requiring all-round access. Concealed front panel fixings are incorporated into the design to give a clean frontal appearance. Combined with its accessories it offers the ultimate in versatility and accessibility.

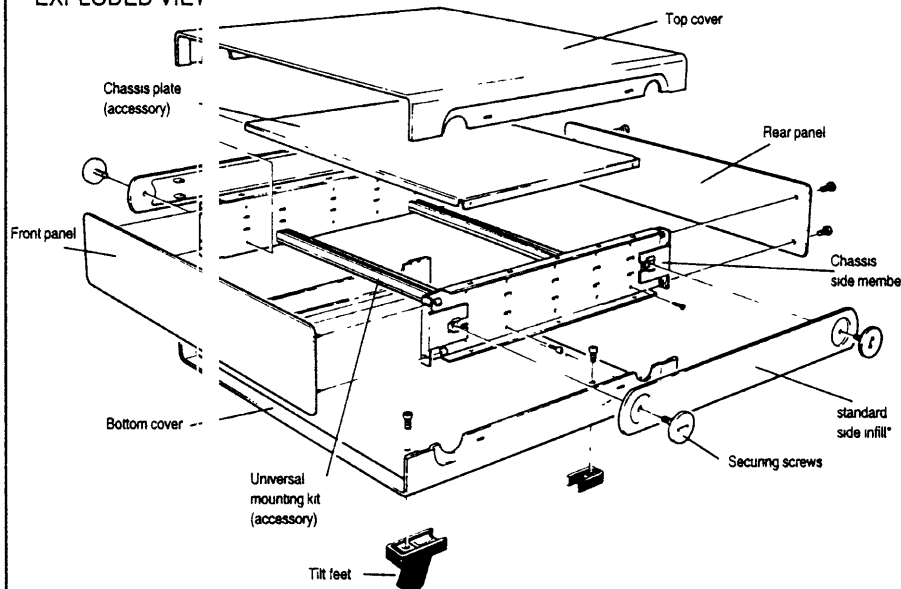
## CONSTRUCTION

Total accessibility is achieved by the simple release of the four side retaining screws. The front panel, chassis side members and rear panel form an integral chassis which can be worked on prior to assembly of the top and bottom covers. Anti-slip, moulded tilt feet give an improved viewing angle of the front panel.

## MATERIAL SPECIFICATION

Top and bottom : 0,9mm Zintec  
covers coated steel  
Front and rear panels: 3mm satin  
anodised aluminium  
Chassis side member: 0,9m Zintec  
coated steel  
Side infill : Alloy die casting

## TOTAL ACCESS CASE EXPLODED VIEW



Feet

Colours

Moulded in  
ABS mid grey  
Top and bottom  
cover, light grey  
BS4800 00A01;  
Infills and feet,  
mid grey  
BS4800 00A05

## CONTENTS OF KIT

Top cover	Bottom cover
2 chassis side members	4 security screws
2 side infills	Front panel
4 feet	Screw kit
Rear panel	

## Ordering information

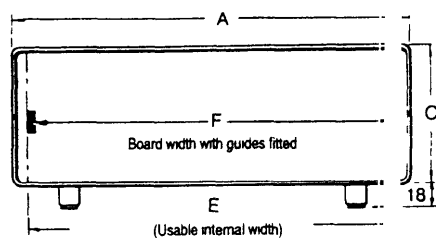
Case reference	Overall width A	Overall depth B	Height (no feet) C	Front panel dimension
1	342	260	70	65 X 337
2	205	260	70	65 x 200
3	430	260	100	95 x 425
4	305	260	100	95 x 300
5	205	260	150	145 x 200
6	405	360	150	145 x 400

Internal depth D	Internal width E	Board width with guides fitted F	Order code
235	305	302,6	212-201451C
235	168	165,6	212-201454H
235	393	390,6	212-201457B
235	268	265,6	212-201460B
235	168	165,6	212-201463G
335	368	365,6	212-201466A

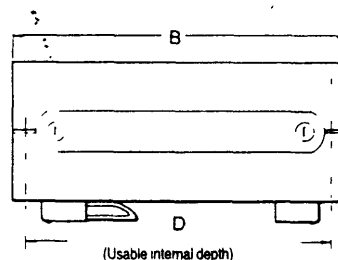
# TOTAL ACCESS CASES

## DIMENSIONAL DETAILS

FRONT ELEVATION



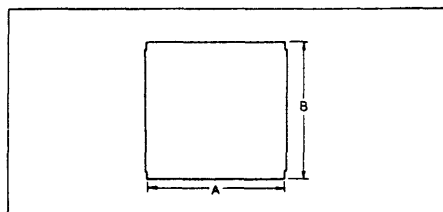
SIDE ELEVATION



### CHASSIS PLATE

This may be fitted at different heights between the chassis side members and can also be inverted, thus giving a wide range of mounting heights. Supplied complete with fixings

MATERIAL : 0,9mm Zinc coated steel



### CHASSIS PLATE DIMENSIONS

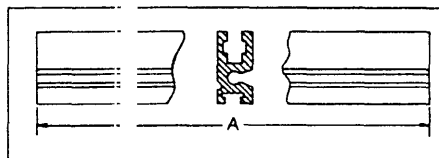
For case size	A	B
1	305	185
2	168	185
3	393	185
4	268	185
5	168	185
6	368	285

### UNIVERSAL MOUNTING KIT

This includes extrusions which fix to the chassis side members in a number of alternative positions. The fixings are fully adjustable across the width of the case, giving a universal mounting system to suit Eurocards and other circuit board sizes.

Supplied in pairs complete with fixings.

MATERIAL : Anodised aluminium.

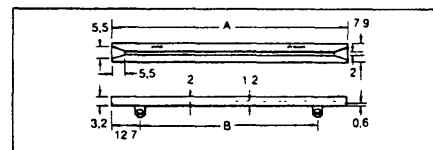


### UNIVERSAL MOUNTING KIT EXTRUSION

For case size	A
1	305
2	168
3	393
4	268
5	168
6	368

### CLIP - IN GUIDES

These guides are available in three lengths and provide a quick and simple method of circuit board mounting for a wide range of applications. They are suitable for 1,6mm thick boards. Supplied as individual items.



### CLIP - IN GUIDE COMPATIBILITY CASES 1 & 2

Will accommodate 3 sizes of clip-in guide in the horizontal plane on 3 levels.

### CASES 3 & 4

Will accommodate 3 sizes of clip-in guide in the horizontal plane on 4 levels.

### CASES 5 & 6

Will accommodate 3 sizes of clip-in guide in the horizontal plane on 6 levels. It will also accept clip-in guide 29-0122C on the vertical plane in various positions.

### CHASSIS PLATE/UNIVERSAL MOUNTING KIT

Case reference	Front panel dimensions	Chassis plate
1	65 x 337	-
2	65 x 200	212-27827G
3	95 x 425	212-27828D
4	95 x 300	212-27829A
5	145 x 200	212-27827G
6	145 x 400	212-27831K

### Ordering information

Order code
Universal mounting kit
212-27840J
212-27841F
212-27842C
212-27843L
212-27841F
212-27845E

### CLIP - IN GUIDES

### Ordering information

A	B	Order code
101,6	76,2	29-0122C
139,7	76,2	29-0124D
177,8	152,4	29-0126E