

CMDSH05-4
SURFACE MOUNT
LOW V_F
SILICON SCHOTTKY DIODE



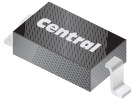
www.centrasemi.com

DESCRIPTION:

The CENTRAL SEMICONDUCTOR CMDSH05-4 is a 40 volt Schottky Diode packaged in a space saving surface mount SOD-323 case. This **SUPERmini™** device has been designed for applications requiring a low forward voltage drop.

MARKING CODE: C55

SUPERmini™



SOD-323 CASE

MAXIMUM RATINGS: (T_A=25°C)

Peak Repetitive Reverse Voltage
Continuous Forward Current
Peak Repetitive Forward Current, tp≤1.0ms
Peak Forward Surge Current, tp=8.0ms
Power Dissipation
Operating and Storage Junction Temperature
Thermal Resistance

SYMBOL		UNITS
V _{RRM}	40	V
I _F	500	mA
I _{FRM}	3.5	A
I _{FSM}	10	A
P _D	250	mW
T _J , T _{stg}	-65 to +150	°C
θ _{JA}	500	°C/W

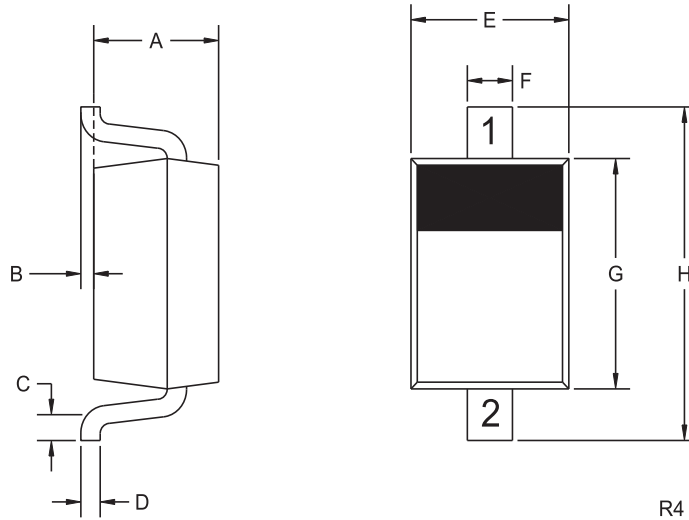
ELECTRICAL CHARACTERISTICS: (T_A=25°C unless otherwise noted)

SYMBOL	TEST CONDITIONS	MIN	TYP	MAX	UNITS
I _R	V _R =10V			20	μA
I _R	V _R =30V		60	100	μA
I _R	V _R =30V, T _A =85°C		2.5		mA
I _R	V _R =30V, T _A =100°C		6.0		mA
BV _R	I _R =500μA	40			V
V _F	I _F =100μA			0.13	V
V _F	I _F =1.0mA			0.21	V
V _F	I _F =10mA			0.27	V
V _F	I _F =100mA			0.35	V
V _F	I _F =500mA			0.47	V
C _T	V _R =1.0V, f=1.0MHz			50	pF

CMDSH05-4
SURFACE MOUNT
LOW V_F
SILICON SCHOTTKY DIODE



SOD-323 CASE - MECHANICAL OUTLINE



LEAD CODE:

- 1) CATHODE
- 2) ANODE

MARKING CODE: C55

SYMBOL	DIMENSIONS			
	INCHES		MILLIMETERS	
	MIN	MAX	MIN	MAX
A	0.031	0.039	0.80	1.00
B	0.000	0.004	0.00	0.10
C	0.008	-	0.20	-
D	0.004	0.007	0.11	0.19
E	0.045	0.053	1.15	1.35
F	-	0.014	-	0.35
G	0.063	0.071	1.60	1.80
H	0.094	0.102	2.40	2.60

SOD-323 (REV: R4)

R2 (2-November 2010)