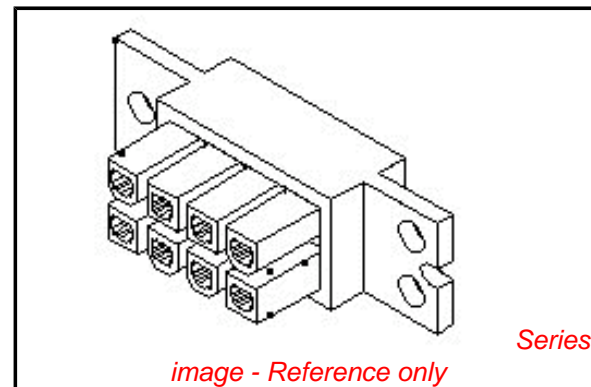


PLEASE CHECK WWW.MOLEX.COM FOR LATEST PART INFORMATION

Part Number: [0510100411](#)
Status: **Active**
Description: 5.00mm (.197") Pitch Wire-to-Wire Receptacle Housing, Floating-Fit Type, 4 Circuits

Documents:

3D Model	Product Specification PS-51010-004 (PDF)
Drawing (PDF)	Product Specification PS-51010-005 (PDF)
Product Specification PS-51010-001 (PDF)	Product Specification PS-51010-006 (PDF)
Product Specification PS-51010-002 (PDF)	Product Specification PS-51010-007 (PDF)
Product Specification PS-51010-003 (PDF)	RoHS Certificate of Compliance (PDF)



Agency Certification

CSA	LR19980
TUV	R72081037
UL	E29179

General

Product Family	Crimp Housings
Series	51010
Product Name	N/A

Physical

Circuits (maximum)	4
Color - Resin	Black
Flammability	94V-0
Gender	Female
Glow-Wire Compliant	No
Material - Resin	Polyester
Number of Rows	2
Packaging Type	Bag
Panel Mount	Yes
Pitch - Mating Interface (in)	0.197 In
Pitch - Mating Interface (mm)	5.00 mm
Stackable	No
Temperature Range - Operating	-40°C to +105°C

Material Info

Reference - Drawing Numbers

Product Specification	PS-51010-001, PS-51010-002, PS-51010-003, PS-51010-004, PS-51010-005, PS-51010-006, PS-51010-007, RPS-51010-013
Sales Drawing	SD-51010-001

EU RoHS **China RoHS**

ELV and RoHS Compliant
REACH SVHC Contains SVHC: No
Halogen-Free Status
Not Halogen-Free



Need more information on product environmental compliance?

Email productcompliance@molex.com
 For a multiple part number RoHS Certificate of Compliance, [click here](#)

Please visit the [Contact Us](#) section for any non-product compliance questions.

Search Parts in this Series

[51010Series](#)

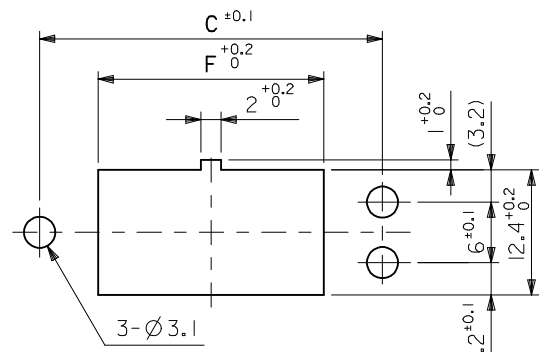
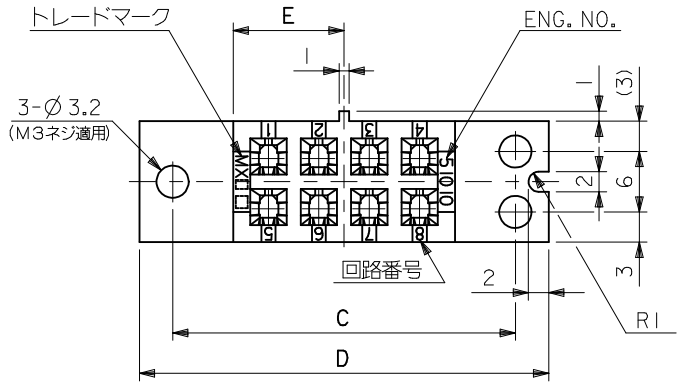
Mates With

[52025](#)

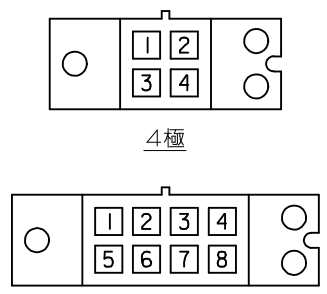
Use With

[5556](#)

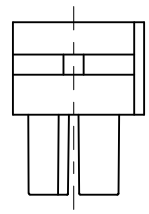
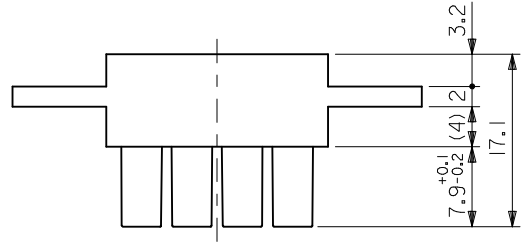
PLEASE CHECK WWW.MOLEX.COM FOR LATEST PART INFORMATION



パネル切抜寸法 (参考)

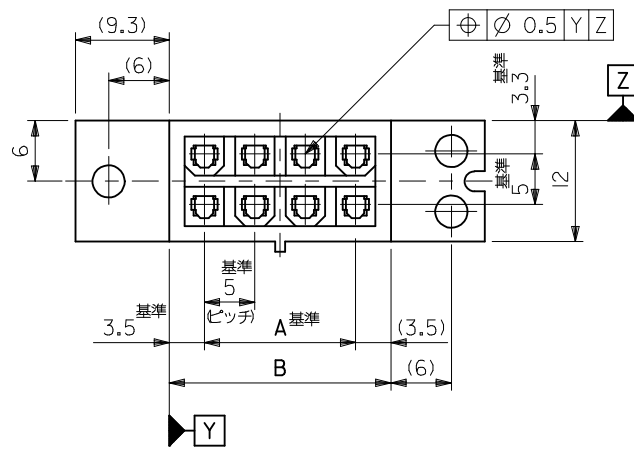
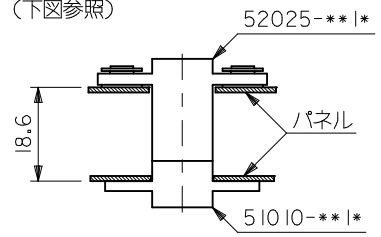


回路レイアウト図



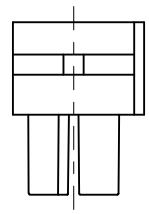
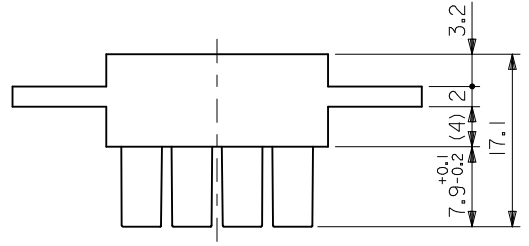
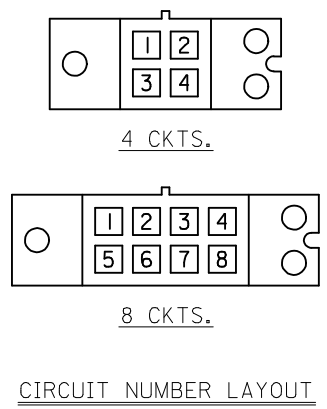
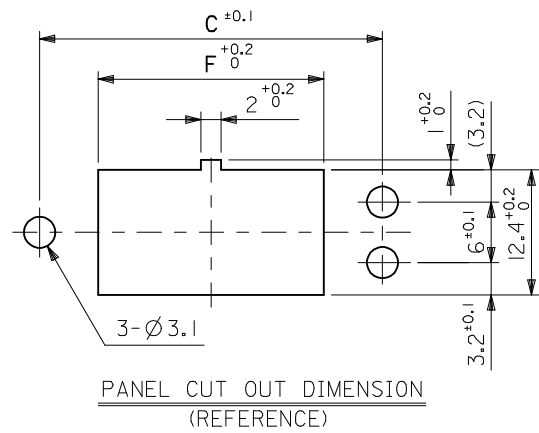
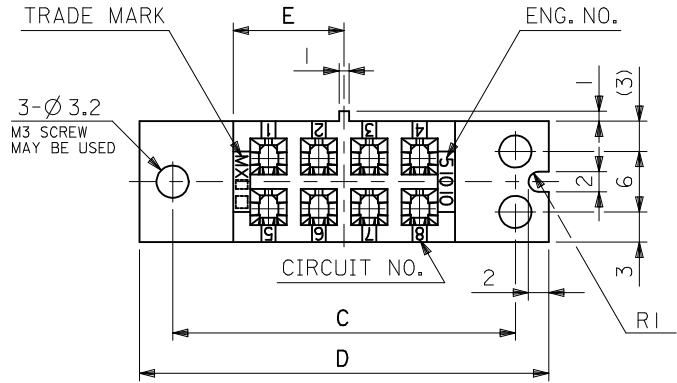
注記

- 1. 適用ターミナル: 5556 シリーズ
- 2. 嵌合相手: 52025-***1*
- 3. パネル外一外寸法 18.6 (下図参照)



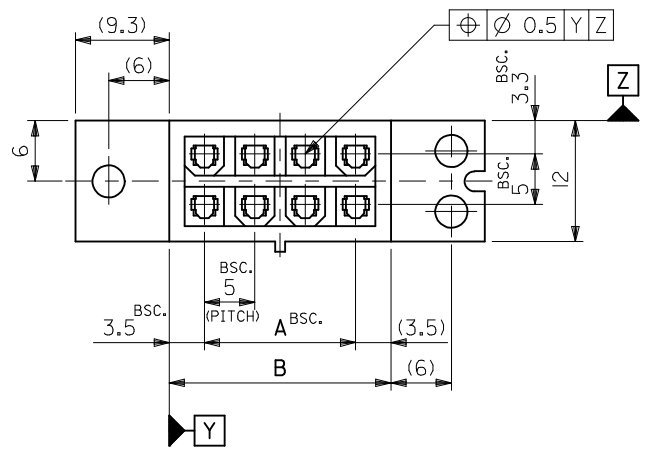
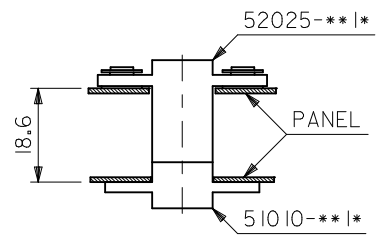
22.4	11	40.6	34	22	15	51010-0811	黒	8
12.4	6	30.6	24	12	5	51010-0411	黒	4
F	E	D	C	B	A	ENG. NO.	色	極数

REVISED EC NO: J2009-1120 DRWN: YOSHIDAM 2008/12/17 CHKD: THARUYAMA 2008/12/17 APPR: NUKITA 2009/01/14	GENERAL TOLERANCES (UNLESS SPECIFIED)		DIMENSION STYLE MM ONLY	SCALE 2:1	DESIGN UNITS METRIC	THIRD ANGLE PROJECTION		
	10 UNDER	±0.2	DRAWN BY H. HIRAMOTO	DATE '89/11/22	TITLE IMP REC. HOUSING			
	10 OVER 30 UNDER	±0.25	CHECKED BY M. FUKUSHIMA	DATE '90/10/18	MATERIAL NO. SD-51010-001			
	30 OVER	±0.3	APPROVED BY M. ENOMOTO	DATE '90/10/18	SHEET NO. 1 OF 2			
	ANGULAR ±3 °	DRAFT WHERE APPLICABLE MUST REMAIN WITHIN DIMENSIONS	SEE TABLE		MOLEX INCORPORATED			
			THIS DRAWING CONTAINS INFORMATION THAT IS PROPRIETARY TO MOLEX INCORPORATED AND SHOULD NOT BE USED WITHOUT WRITTEN PERMISSION					



NOTES

- 1. APPLICABLE TERMINAL : 5556 SERIES
- 2. MATES WITH : 52025-***|*
- 3. BETWEEN PANEL-PANEL DIMENSION : 18.6 (SEE BELOW FIGURE)



22.4	11	40.6	34	22	15	51010-0811	BLACK	8
12.4	6	30.6	24	12	5	51010-0411	BLACK	4
F	E	D	C	B	A	ENG. NO.	COLOR	NO. OF CKTS.

REVISED EC NO: J2009-1120 DRWN: YOSHIDAM 2008/12/17 CHKD: THARUYAMA 2008/12/17 APPR: NUKITA 2009/01/14	GENERAL TOLERANCES (UNLESS SPECIFIED)		DIMENSION STYLE MM ONLY		SCALE 2:1		DESIGN UNITS METRIC		THIRD ANGLE PROJECTION	
	10 UNDER	±0.2	DRAWN BY H. HIRAMOTO		DATE '89/11/22		TITLE IMP REC. HOUSING			
	10 OVER 30 UNDER	±0.25	CHECKED BY M. FUKUSHIMA		DATE '90/10/18		MOLEX INCORPORATED SD-51010-001 SHEET NO. 2 OF 2			
	30 OVER	±0.3	APPROVED BY M. ENOMOTO		DATE '90/10/18					
ANGULAR	±3 °	DRAFT WHERE APPLICABLE MUST REMAIN WITHIN DIMENSIONS		MATERIAL NO. SEE TABLE		DOCUMENT NO.				
SIZE A3	THIS DRAWING CONTAINS INFORMATION THAT IS PROPRIETARY TO MOLEX INCORPORATED AND SHOULD NOT BE USED WITHOUT WRITTEN PERMISSION									