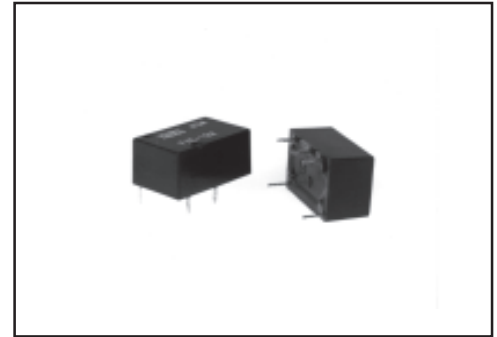


■ Features

- Low Profile Compact Size
- High Contact Capacity
- High Sensitivity
200 mW nominal (98mW Pull-in)
- Easy Flow-Soldering
- Solvent Compatibility



UL E50288
CSA LR700402

■ Coil Rating (at 20°C)

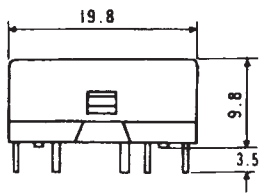
Rated Voltage	Coil Resistance	Pull-in Voltage	Drop-out Voltage	Max. Allowable Voltage	Rated Power
3VDC	45Ω	70%V Max. of rated voltage	10%V Min. of rated voltage	200%V of rated voltage	Approx. 0.2W
5VDC	125Ω				
6VDC	180Ω				
9VDC	405Ω				
10VDC	500Ω				
12VDC	720Ω				
24VDC	2,880Ω				

■ Specifications

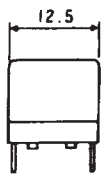
Contact Arrangement	1 Form A	1 Form C
Contact Material	Standard : Silver alloy Low level : Gold-plated silver alloy	
Rated Load	250VAC • 10A(resistive) 30VDC • 10A(resistive)	250VAC • 7A(resistive) 30VDC • 7A(resistive)
Max. Switching Power	2,500VA/300W	
Max. Switching Current	10A	7A
Max. Switching Voltage	380VAC/125VDC	
Contact Resistance (Initial)	30mΩ Max. at 6VDC • 1A after throw	
Dielectric Strength	1000VAC for 1 minute between across contacts 2000VAC for 1 minute between coil and contacts	
Insulation Resistance	1000MΩ Min. at 500VDC	
Operate Time	10ms Max.	
Release Time	10ms Max.	
Shock	False Operation	Approx. 20G
	Endurance	Approx. 100G
Vibration	False Operation	10 to 55 Hz, amplitude 1.5mm
	Endurance	10 to 55 Hz, amplitude 1.5mm
Mechanical Life	50 X 10 ⁶ times (Switching frequency: 300 times/minute)	
Electrical Life	1 X 10 ⁵ times at rated load (Switching frequency: 30 times/minute)	
Ambient Temperature	-40 to + 70°C	
Weight	Approx. 5.5 grams.	

■ Dimensions

● Flux Tight Type



Standard Terminal

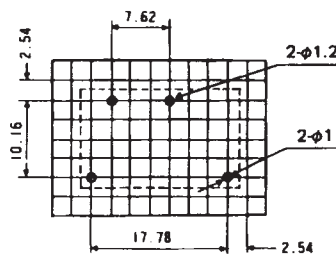


Kink Terminal

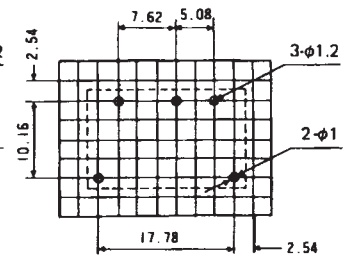


● P.C. Board Drilling Design

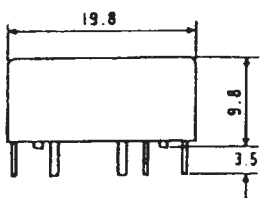
1 Form A



1 Form C

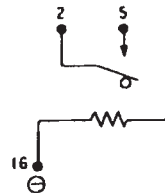


● Sealed Type

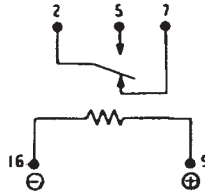


● Internal Wiring Diagram (BOTTOM VIEW)

1 Form A



1 Form C



Take notice of the polarity of coil shown above.

Taiko Brand

■ How to order

FXE - 12 M G C

Model

Coil Voltages: 3, 5, 6, 9, 10, 12, 24 VDC

Blank: 1 Form C (SPDT)

M: 1 Form A (SPST-NO)

Blank: Standard Contact

G: Low level contact

Blank: Standard terminal type

C: Kink terminal type