



Solid State Devices, Inc.

14701 Firestone Blvd * La Mirada, Ca 90638
 Phone: (562) 404-4474 * Fax: (562) 404-1773
 ssdi@ssdi-power.com * www.ssdi-power.com

**SDR6K
and
SDR6M**

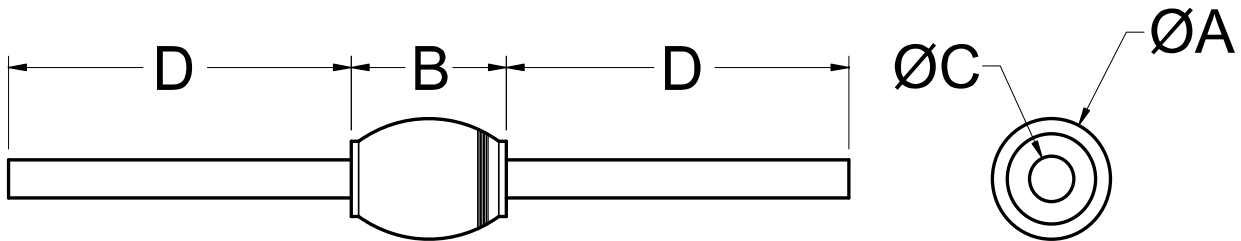
ELECTRICAL CHARACTERISTICS ^{3/}

CHARACTERISTICS	SYMBOL	VALUE	UNIT
Instantaneous Forward Voltage Drop ($I_F = 6A_{dc}$, 300 μs Pulse, $T_A = 25^\circ C$)	V_{F1}	2.20	Vdc
Instantaneous Forward Voltage Drop ($I_F = 6A_{dc}$, 300 μs Pulse, $T_A = -55^\circ C$)	V_{F2}	2.10	Vdc
Maximum Reverse Leakage Current (Rated V_R , 300 μs Pulse Minimum, $T_A = 25^\circ C$)	I_{R1}	10	μA
Maximum Reverse Leakage Current (Rated V_R , 300 μs Pulse Minimum, $T_A = 100^\circ C$)	I_{R2}	1	mA
Junction Capacitance ($V_R = 10V_{dc}$, $T_A = 25^\circ C$, $f = 1MHz$)	C_J	80	pf
Maximum Reverse Recovery Time ^{4/}	t_{rr}	90	ns

Axial Leaded Case Outline ^{5/}:

DIMENSIONS

DIM.	MIN.	MAX.
A	---	.200"
B	---	.270"
C	.055"	.063"
D	.400"	---



NOTES:

- 1/ For Ordering Information, Price, and Availability- Contact Factory.
- 2/ Screened to MIL-PRF-19500.
- 3/ Unless Otherwise Specified, All Electrical Characteristics @25°C.

- 4/ Recovery Conditions: $I_F = 0.5$ Amp, $I_R = 1.0$ Amp, I_{RR} to .25 Amp.
- 5/ For information on operating curves, contact factory.

NOTE: All specifications are subject to change without notification. SCD's for these devices should be reviewed by SSDI prior to release.

DATA SHEET #: RU0017B

DOC