

8-PIN SMD PUSH-PULL TRANSFORMERS

- * Designed to Support Maxim's MAX253
- * 1500Vrms Minimum Isolation Voltage
- * Designed For $\geq 125\text{KHz}$, 50% Duty Cycle Push-Pull Operation @ 1.0 Watt Output

- * Low profile 8-Pin SMD Package
- * Industry Standard Package
- * Multiple Configurations

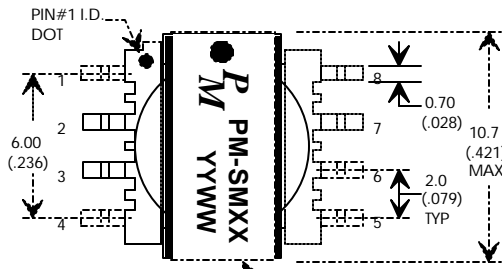
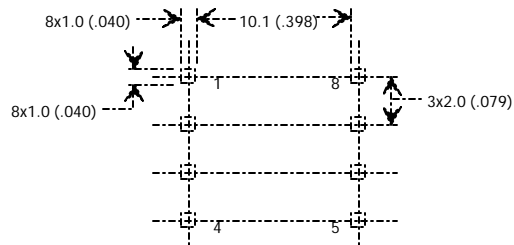
ELECTRICAL SPECIFICATIONS AT 25°C - OPERATING TEMPERATURE RANGE -40°C TO +85°C

PART NUMBER	TURNS RATIO (Pri:Sec $\pm 5\%$)	PRIMARY OCL (mHMin.)	Primary Pins	TYPICAL APPLICATION	PRI/SEC HI-POT (Vrms)	GENERAL CHARACTERISTICS
PM-SM15	1CT : 1.00	150	1-4	+5V to +10V	1500	Volt Doubler Driving a Regulator
PM-SM16	1CT : 1.38CT	150	1-4	+5V to +5V	1500	Full Wave Center Tap
PM-SM17	1CT : 2.00CT	150	1-4	+3.3V to +5V	1500	Full Wave Center Tap
PM-SM18	1CT : 0.667	150	1-4	+5V to +5V	1500	Full Wave Bridge

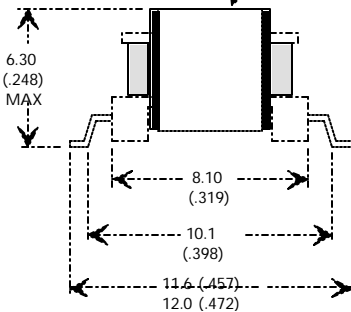
MECHANICALS

RECOMMENDED P.C.B. LAYOUT

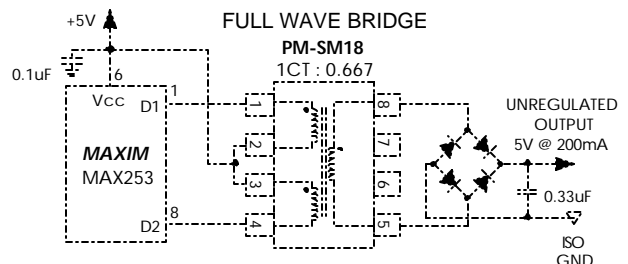
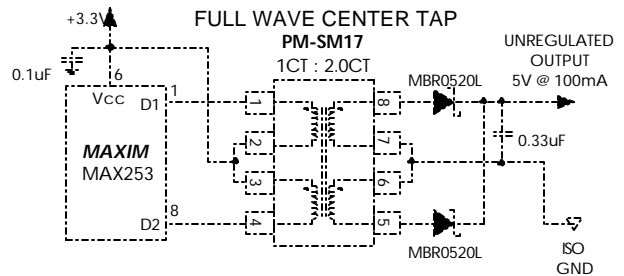
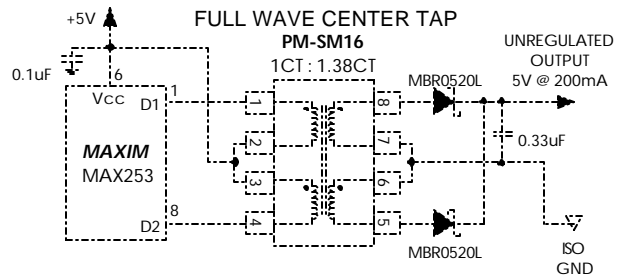
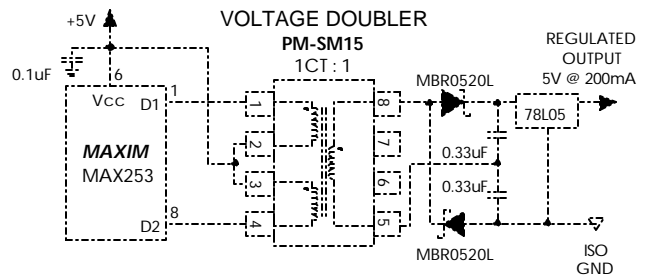
Dimensions in mm (inches)



CORE CLAMP



TYPICAL APPLICATIONS



Specifications subject to change without notice.