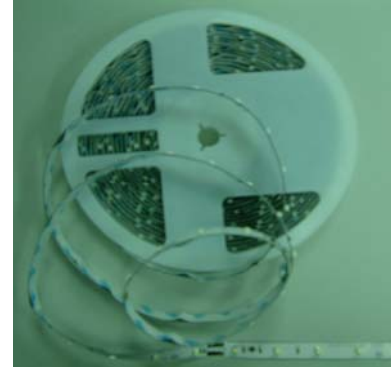


**■ DESCRIPTION**

Flexstrip Light is high brightness SMD LED mounted on FPC. Six colors (red, orange red, yellow, green, blue and white) are available for variable applications.

Bright View provides functions of brightness dimmable and color changeable control system.

**■ FEATURES**

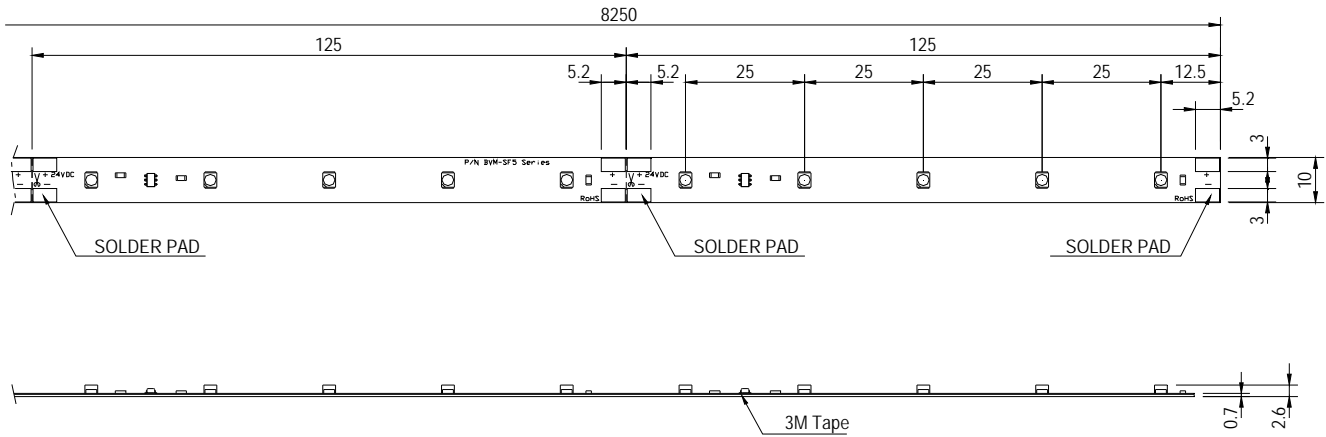
Number of built-in SMD LEDs : 330 pcs of ultra bright SMD LED  
Product size (LxWXH) : 8250mm x 10mm x 2.6mm(with adhesive-tape back)  
Smallest unit (125mm) of 5 LEDs can be cut at mark place  
Continuous length flexible LED light strips , total 66 units per reel  
Low power consumption, high intensity  
Runs on DC 24 volt power supply  
Lead (Pb) free, and RoHS compliant

**■ APPLICATIONS**

Amusement park & theater mood lighting  
Architectural decorative lighting  
Backlighting for signage letters  
Auditorium walkway lighting  
Stairway accent lighting  
Hallway lighting

■ **PRODUCT DIMENSIONS**

Unit : mm



■ **PART NUMBERING SYSTEM**

**B V M - S F 5 C 0 1 W3S-A**



**■ ABSOLUTE MAXIMUM RATINGS AT Ta = 25 °C**

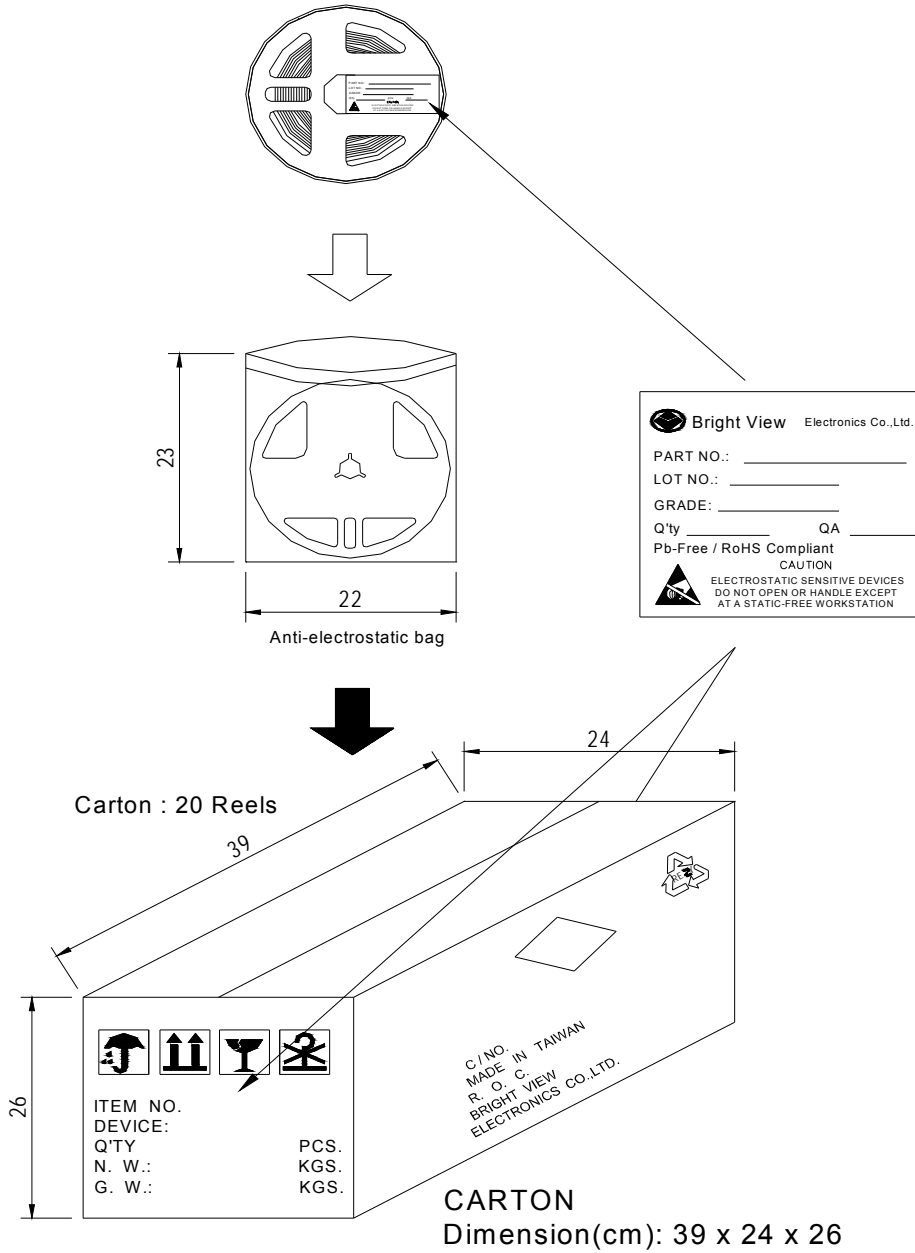
PARAMETER	MAX.	UNIT
Maximum Operating Voltage	25	V DC
Electrostatic Discharge (Contact Model)	±2000	V DC
Power Dissipation / Reel	33	W
Operating Temperature Range	-30 °C to +65 °C	
Storage Temperature Range	-30 °C to +85 °C	

\*The operating temperature measured position is on the back of the PCB.

**■ TYPICAL ELECTRICAL / OPTICAL CHARACTERISTICS AT 24VDC Ta = 25 °C**

Part No.	Color	View Angle (degree)	Wavelength/CCT $\lambda_d$ (nm) / ° K	Current per Unit (mA)	Current per Reel (A)	Lum.Flux per Unit (lm)	Lum.Flux per Reel (lm)
BVM-SF5C01B3S	Blue	110	470	20	1.32	2.5	160
BVM-SF5C01G3S	Green	110	525	20	1.32	7.0	448
BVM-SF5C01R3S	Red	110	625	20	1.32	5.5	352
BVM-SF5C01O3S	Orange	110	605	20	1.32	3.5	224
BVM-SF5C01Y3S	Yellow	110	589	20	1.32	7.0	448
BVM-SF5C01W3S-A	White	110	2500-2800	20	1.32	16.5	1050
BVM-SF5C01W3S-B	White	110	3200-3500	20	1.32	16.5	1050
BVM-SF5C01W3S-C	White	110	3500-3800	20	1.32	16.5	1050
BVM-SF5C01W3S-D	White	110	6300-7000	20	1.32	16.5	1050

■ **PACKING**





### ■ CAUTIONS

1. Solder connection should only be performed on designated solder pads (marked +/-).  
During soldering, do not exceed the maximum soldering time of 10 seconds and the maximum soldering temperature of 260°C.
2. Correct electrical polarity needs to be observed. Wrong polarity may destroy the LED module.
3. When using power supply the following basic safety features are required, in addition to any other specific application concerns and local safety codes:
  - . overload protection
  - . short circuit protection
  - . over heat protection
  - . correct output voltage, including consideration for ripple and spikes
4. Make ensure that the power supply is of adequate power to operate the total load.
5. When mounting on metallic surface, there needs to be a electrical isolation between module and the mounting surface.
6. Customer's desired lengths of minimum 125mm and its multiple can be made by breaking at the cutting mark of the LED strip.
7. This product is not waterproof and precaution should be taken to keep from exposure to moisture.
8. The FPC (No. BVM-SP5 Series) can be operated at maximum length of 8 meter.
9. Pay attention to standard ESD precautions when installing the LED module.