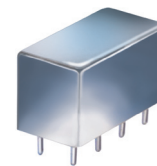


Plug-In Limiter

50Ω Broadband, 0.1 to 150 MHz

PLS-1+



CASE STYLE: A01
PRICE: \$25.20 ea. QTY. (1-9)

+ RoHS compliant in accordance with EU Directive (2002/95/EC)

The +Suffix has been added in order to identify RoHS Compliance. See our web site for RoHS Compliance methodologies and qualifications.

Maximum Ratings

Operating Temperature	-55°C to 100°C
Storage Temperature	-55°C to 100°C
RF Input Power	100mW
Control Current	10mA

Pin Connections

INPUT	1
OUTPUT	8
CONTROL	3,4^
GROUND	2,5,6,7
CASE GROUND	2

^ pins must be connected together externally

Features

- hermetic shielded case
- very small phase variation

Applications

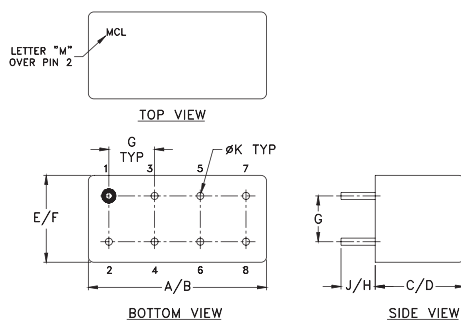
- military, hi-rel applications
- stabilizing generator outputs
- reducing amplitude variations
- providing constant amplitude signals in phase sensitive systems

Limiter Electrical Specifications

FREQUENCY (MHz)	INPUT POWER (dBm)		OUTPUT* POWER (dBm)	CONTROL CURRENT (mA)	LIMITING Δ Output		
	Min.	Max.			Typ.	Input range dBm	amp
0.1-150	6.0	20	-4.0	3.0	6 to 10	0.10	0.8
					10 to 16	0.15	0.8
					16 to 20	0.15	0.7

* Typical output level at typical control current, level maybe changed by varying current.

Outline Drawing

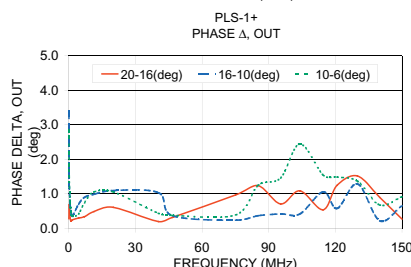
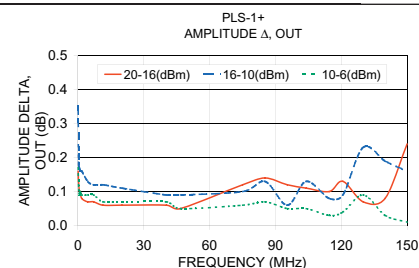
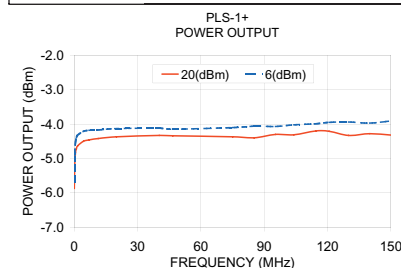


Outline Dimensions (inch mm)

A	B	C	D	E	F
.770	.800	.385	.400	.370	.400
19.56	20.32	9.78	10.16	9.40	10.16
G	H	J	K	wt	
.200	.20	.14	.031	grams	
5.08	5.08	3.56	0.79	5.2	

Typical Performance Data

Frequency (MHz)	Power Output		Delta (dB)	Amplitude Delta, out dBm Input			Phase Delta, Out dBm Input		
	(20 dBm IN) (dBm)	(6 dBm IN) (dBm)		20-16 (dB)	16-10 (dB)	10-6 (dB)	20-16 (deg.)	16-10 (deg.)	10-6 (deg.)
0.10	-5.87	-5.68	0.19	0.16	0.35	0.17	0.28	3.41	2.84
0.26	-5.21	-4.86	0.36	0.13	0.18	0.12	0.69	1.29	1.52
0.66	-4.83	-4.52	0.31	0.10	0.17	0.09	0.30	0.70	0.75
1.06	-4.72	-4.39	0.33	0.10	0.16	0.10	0.21	0.49	0.48
1.71	-4.63	-4.32	0.31	0.08	0.16	0.09	0.25	0.36	0.35
4.42	-4.50	-4.21	0.29	0.07	0.13	0.09	0.30	0.70	0.42
7.11	-4.46	-4.18	0.28	0.07	0.12	0.09	0.34	0.90	0.74
11.41	-4.42	-4.17	0.25	0.06	0.12	0.07	0.49	0.99	1.06
20.08	-4.37	-4.13	0.24	0.06	0.11	0.07	0.61	1.10	1.06
40.32	-4.33	-4.12	0.21	0.06	0.09	0.07	0.20	1.04	0.44
46.73	-4.34	-4.15	0.19	0.05	0.09	0.05	0.32	0.37	0.38
75.09	-4.37	-4.10	0.28	0.12	0.10	0.06	0.97	0.24	0.39
85.23	-4.40	-4.06	0.34	0.14	0.13	0.07	1.24	0.37	1.25
95.37	-4.30	-4.07	0.23	0.12	0.06	0.05	0.71	0.42	1.46
104.06	-4.31	-4.02	0.29	0.11	0.13	0.05	1.09	0.42	2.45
114.50	-4.20	-3.99	0.22	0.10	0.08	0.03	0.54	1.06	1.55
120.76	-4.21	-3.95	0.26	0.13	0.09	0.04	1.25	0.58	1.49
129.95	-4.33	-3.94	0.39	0.07	0.23	0.09	1.52	1.29	1.37
139.98	-4.28	-3.97	0.32	0.08	0.19	0.03	0.90	0.22	0.68
150.00	-4.32	-3.91	0.41	0.24	0.16	0.01	0.27	0.66	0.92



Mini-Circuits®
ISO 9001 ISO 14001 CERTIFIED

ALL NEW
minicircuits.com

P.O. Box 350166, Brooklyn, New York 11235-0003 (718) 934-4500 Fax (718) 332-4661 For detailed performance specs & shopping online see Mini-Circuits web site



The Design Engineers Search Engine Provides ACTUAL Data Instantly From MINI-CIRCUITS At: www.minicircuits.com

RF/IF MICROWAVE COMPONENTS

REV. B
M108294
PLS-1+
DJ/V/W/CP
0700711