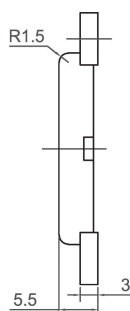
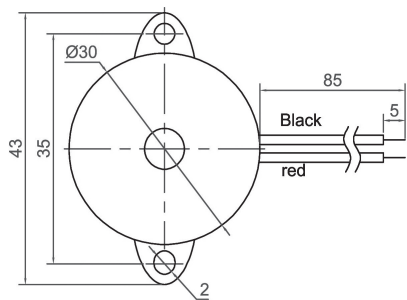
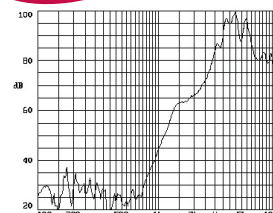


External Drive Piezo Transducer (AC)

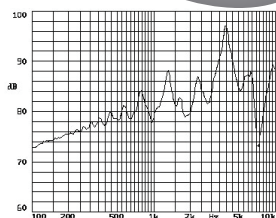
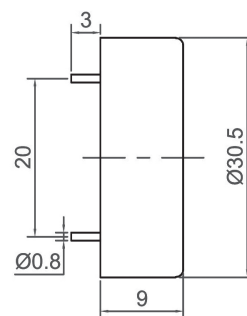
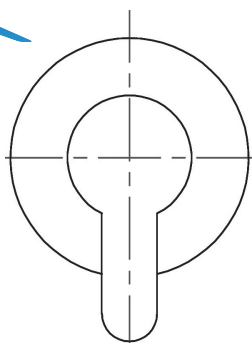


CPT3005

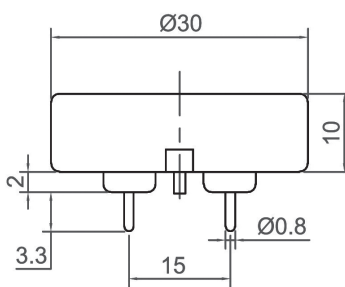
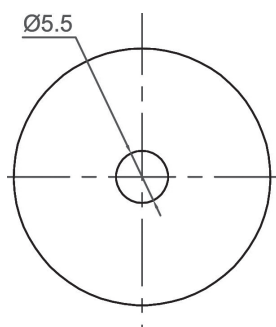
Canopus Part no.	Min sound Output (dBA)	Rated Voltage (V)	Max Input Voltage (V)	Resonant Frequency (Hz)	Capacitance (pF)	Operating Temperature (°C)	Housing	Weight (g)
CPT3005C25BW	80 AT 10cm	3 Vrms	30 Vp-p	2500	55000 ± 30% at 1000Hz	-20 ~ +70	ABS	5
CPT3005C35BW	75 AT 10cm	3 Vp-p	30 Vp-p	3500	25000 ± 30% at 1000Hz	-20 ~ +60	ABS	3.5
CPT3005C40BW	85 AT 10cm	3 Vrms	30 Vp-p	4000	25000 ± 30% at 1000Hz	-20 ~ +70	ABS	5
CPT3005I13BW	75 AT 10cm	12 Vp-p	40 Vp-p	1300	45000 ± 30% at 1000Hz	-20 ~ +60	ABS	3.5



CPT3008

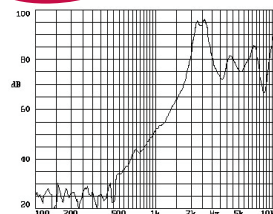


Canopus Part no.	Min sound Output (dBA)	Rated Voltage (V)	Max Input Voltage (V)	Resonant Frequency (Hz)	Capacitance (pF)	Operating Temperature (°C)	Housing	Weight (g)
CPT3008G30TP	80 AT 10cm	9 Vp-p	30 Vp-p	3000	35000 ± 30% at 1000Hz	-30 ~ +70	PBT	5
CPT3008G40TP	80 AT 10cm	9 Vp-p	30 Vp-p	4000	25000 ± 30% at 1000Hz	-30 ~ +70	PBT	5.5



CPT3010

Canopus Part no.	Min sound Output (dBA)	Rated Voltage (V)	Max Input Voltage (V)	Resonant Frequency (Hz)	Capacitance (pF)	Operating Temperature (°C)	Housing	Weight (g)
CPT3010C18BP	80 AT 10cm	3 Vrms	30 Vp-p	1800	50000 ± 30% at 1000Hz	-20 ~ +70	ABS	6
CPT3010C25TP	90 AT 10cm	3 Vrms	30 Vp-p	2500	25000 ± 30% at 1000Hz	-20 ~ +70	PBT	6



CANOPUS

Your Efficient Supplier
www.canopus.com.hk

TEL.: (852) 2806 2812

Fax: (852) 2652 2216