

PLEASE CHECK WWW.MOLEX.COM FOR LATEST PART INFORMATION

Part Number: [0879571010](#)
Status: **Active**
Description: 2.50mm (.098") Pitch Header, Right Angle, Through Hole, 10 Circuits, Tin (Sn) Overall Plating, Tray Packaging, Lead-free

Documents:

[Drawing \(PDF\)](#) [RoHS Certificate of Compliance \(PDF\)](#)

General

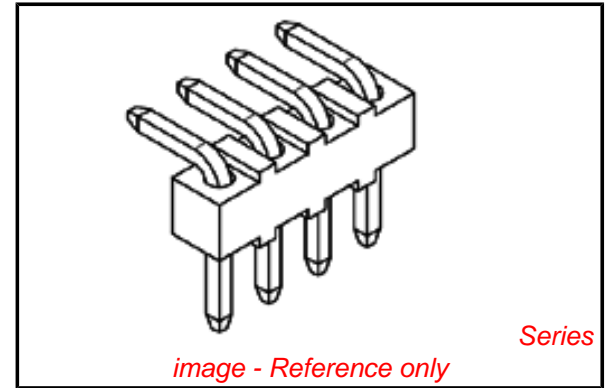
Product Family	PCB Headers
Series	87957
Application	Board-to-Board, Wire-to-Board
Product Name	N/A

Physical

Breakaway	Yes
Circuits (Loaded)	10
Circuits (maximum)	10
Color - Resin	Black
First Mate / Last Break	No
Glow-Wire Compliant	No
Guide to Mating Part	No
Keying to Mating Part	None
Lock to Mating Part	None
Material - Metal	Brass
Material - Plating Mating	Tin
Material - Plating Termination	Nickel
Material - Resin	Nylon
Number of Rows	1
Orientation	Right Angle
PC Tail Length (in)	0.146 In
PC Tail Length (mm)	3.71 mm
PCB Locator	No
PCB Retention	None
PCB Thickness Recommended (in)	0.062 In
PCB Thickness Recommended (mm)	1.60 mm
Packaging Type	Tray
Pitch - Mating Interface (in)	0.098 In
Pitch - Mating Interface (mm)	2.50 mm
Pitch - Term. Interface (in)	0.098 In
Pitch - Term. Interface (mm)	2.50 mm
Plating min: Mating (µin)	200
Plating min: Mating (µm)	5.00
Plating min: Termination (µin)	49
Plating min: Termination (µm)	1.25
Polarized to Mating Part	No
Polarized to PCB	No
Shrouded	No
Stackable	No
Surface Mount Compatible (SMC)	Yes
Temperature Range - Operating	-55°C to +105°C
Termination Interface: Style	Through Hole

Electrical

Current - Maximum per Contact	3A
Voltage - Maximum	250V



EU RoHS

ELV and RoHS Compliant
REACH SVHC
 Not Reviewed
Halogen-Free Status
 Not Reviewed

China RoHS



Need more information on product environmental compliance?

Email productcompliance@molex.com
 For a multiple part number RoHS Certificate of Compliance, [click here](#)

Please visit the [Contact Us](#) section for any non-product compliance questions.

Search Parts in this Series

[87957Series](#)

Mates With

KK® 2.50mm (.098") Crimp Terminal Housing

Solder Process Data

Duration at Max. Process Temperature (seconds)	14
Lead-free Process Capability	Wave Capable (TH only)
Max. Cycles at Max. Process Temperature	1
Process Temperature max. C	265

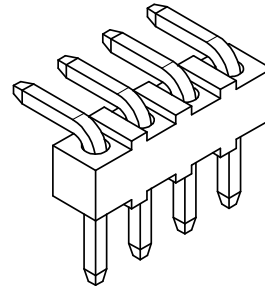
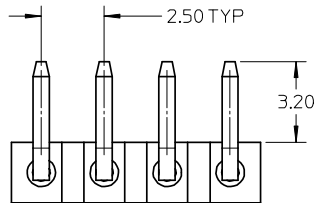
Material Info**Reference - Drawing Numbers**

Sales Drawing	SD-87957-010
---------------	--------------

This document was generated on 04/05/2010

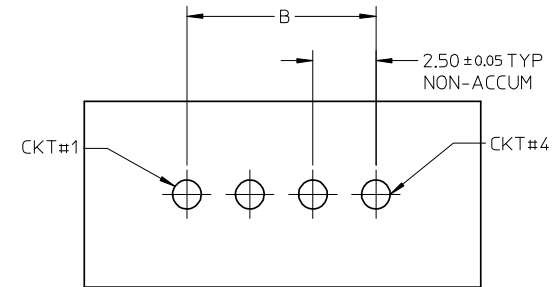
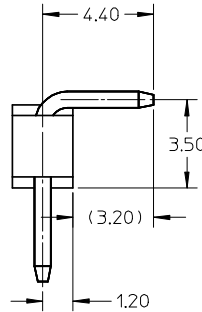
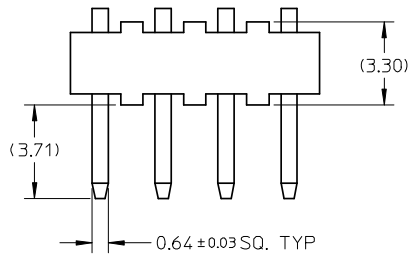
PLEASE CHECK WWW.MOLEX.COM FOR LATEST PART INFORMATION

PART NO FOR TRAY PACKAGING	CKT SIZE	DIMENSION	
		A	B
87957-1004	4	9.90	7.50
87957-1005	5	12.40	10.00
87957-1010	10	24.90	22.50

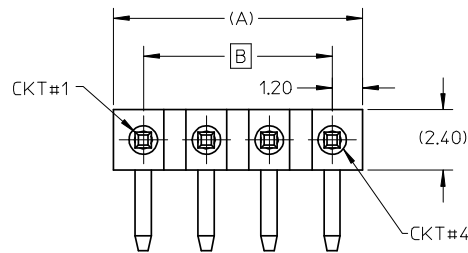


NOTES:

- FOR ILLUSTRATION PURPOSE, 4 CKT SIZE IS AS SHOWN.
- MATERIAL:
 - HOUSING: NYLON, GLASS-FILLED, UL94V-2
 - COLOR: BLACK.
 - TERMINAL: COPPER ALLOY, 0.64MM SQ
- PLATING TYPE:
 - 5.00µm MIN TIN OVER
 - 1.25µm MIN NICKEL UNDERPLATE.
- PIN PUSHOUT FORCE: 1KG MIN IN EITHER DIRECTION
- PART TO BE PACKED IN TRAY
- PRODUCT SPEC PS-87920-019 APPLIED
- WAFER TO BE FLAT WITHIN 0.003mm/mm
- RECOMMENDED PCB THICKNESS 1.60±0.10mm



RECOMMENDED PCB LAYOUT



<p>NEW RELEASE EC NO: S2008-0979 DRWN:ATSEE 2008/06/25 CHKD:SKANG 2008/06/25 APPR:MLONG 2008/06/25</p>	<p>QUALITY SYMBOLS</p> <p>▽=0 ◻=0</p>	<p>GENERAL TOLERANCES (UNLESS SPECIFIED)</p> <table border="1"> <thead> <tr> <th></th> <th>mm</th> <th>INCH</th> </tr> </thead> <tbody> <tr> <td>4 PLACES</td> <td>± ---</td> <td>± ---</td> </tr> <tr> <td>3 PLACES</td> <td>± ---</td> <td>± ---</td> </tr> <tr> <td>2 PLACES</td> <td>± 0.20</td> <td>± ---</td> </tr> <tr> <td>1 PLACE</td> <td>± ---</td> <td>± ---</td> </tr> </tbody> </table>		mm	INCH	4 PLACES	± ---	± ---	3 PLACES	± ---	± ---	2 PLACES	± 0.20	± ---	1 PLACE	± ---	± ---	<p>DIMENSION STYLE</p> <p>MM ONLY</p>	<p>SCALE</p> <p>NTS</p>	<p>DESIGN UNITS</p> <p>METRIC</p>	<p>THIRD ANGLE PROJECTION</p>
		mm	INCH																		
	4 PLACES	± ---	± ---																		
	3 PLACES	± ---	± ---																		
2 PLACES	± 0.20	± ---																			
1 PLACE	± ---	± ---																			
		<table border="1"> <thead> <tr> <th>DRAWN BY</th> <th>DATE</th> <th>TITLE</th> </tr> </thead> <tbody> <tr> <td>ATSEE</td> <td>2008/01/25</td> <td rowspan="2">CUSTOM HEADER 2.50MM SINGLE ROW HEADER SINGLE WAFER RIGHT ANGLE</td> </tr> <tr> <td>SKANG</td> <td>2008/02/05</td> </tr> <tr> <td>APPROVED BY</td> <td>DATE</td> <td></td> </tr> <tr> <td>MLONG</td> <td>2008/02/06</td> <td></td> </tr> </tbody> </table>	DRAWN BY	DATE	TITLE	ATSEE	2008/01/25	CUSTOM HEADER 2.50MM SINGLE ROW HEADER SINGLE WAFER RIGHT ANGLE	SKANG	2008/02/05	APPROVED BY	DATE		MLONG	2008/02/06		<p>molex MOLEX INCORPORATED</p>				
DRAWN BY	DATE	TITLE																			
ATSEE	2008/01/25	CUSTOM HEADER 2.50MM SINGLE ROW HEADER SINGLE WAFER RIGHT ANGLE																			
SKANG	2008/02/05																				
APPROVED BY	DATE																				
MLONG	2008/02/06																				
		<p>DRAFT WHERE APPLICABLE MUST REMAIN WITHIN DIMENSIONS</p>	<p>MATERIAL NO.</p> <p>SEE TABLE</p>	<p>DOCUMENT NO.</p> <p>SD-87957-010</p>	<p>SHEET NO.</p> <p>1 OF 1</p>																
			<p>SIZE</p> <p>A3</p>	<p>THIS DRAWING CONTAINS INFORMATION THAT IS PROPRIETARY TO MOLEX INCORPORATED AND SHOULD NOT BE USED WITHOUT WRITTEN PERMISSION</p>																	