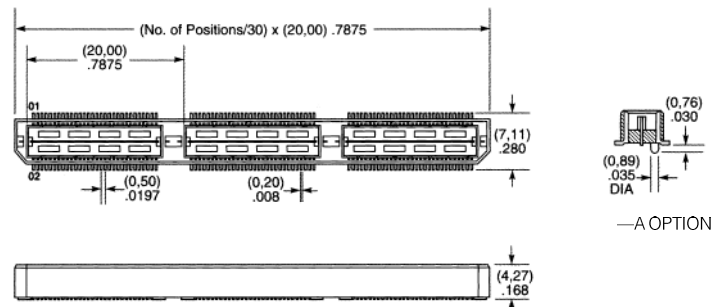
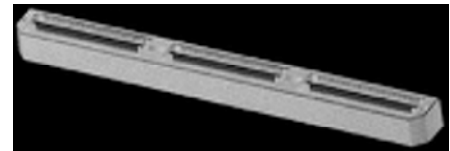


| Cat. No. | No. of Contacts Per Row | Dimensions (mm) | | | Net Price |
|--|-------------------------|-----------------|-------|------|--------------|
| | | A | B | C | |
| DOUBLE ROW, STRAIGHT PIN, TIN ON CONTACTS | | | | | |
| TSW-102-07-TD | 2 | 2.54 | 10.92 | 5.84 | \$.18 |
| TSW-104-07-TD | 4 | 2.54 | 10.92 | 5.84 | .37 |
| TSW-106-07-TD | 6 | 2.54 | 10.92 | 5.84 | .55 |
| TSW-108-07-TD | 8 | 2.54 | 10.92 | 5.84 | .73 |
| TSW-110-07-TD | 10 | 2.54 | 10.92 | 5.84 | .91 |
| TSW-112-07-TD | 12 | 2.54 | 10.92 | 5.84 | 1.10 |
| TSW-120-07-TD | 20 | 2.54 | 10.92 | 5.84 | 1.83 |
| TSW-124-07-TD | 24 | 2.54 | 10.92 | 5.84 | 2.19 |
| TSW-136-07-TD | 36 | 2.54 | 10.92 | 5.84 | 3.29 |
| TSW-150-07-TD | 50 | 2.54 | 10.92 | 5.84 | 3.65 |
| SINGLE ROW, STRAIGHT PIN, TIN ON CONTACTS | | | | | |
| TSW-102-07-TS | 2 | 2.54 | 10.92 | 5.84 | .09 |
| TSW-104-07-TS | 4 | 2.54 | 10.92 | 5.84 | .18 |
| TSW-106-07-TS | 6 | 2.54 | 10.92 | 5.84 | .27 |
| TSW-108-07-TS | 8 | 2.54 | 10.92 | 5.84 | .37 |
| TSW-110-07-TS | 10 | 2.54 | 10.92 | 5.84 | .46 |
| TSW-112-07-TS | 12 | 2.54 | 10.92 | 5.84 | .55 |
| TSW-120-07-TS | 20 | 2.54 | 10.92 | 5.84 | .91 |
| TSW-124-07-TS | 24 | 2.54 | 10.92 | 5.84 | 1.10 |
| TSW-136-07-TS | 36 | 2.54 | 10.92 | 5.84 | 1.64 |
| TSW-150-07-TS | 50 | 2.54 | 10.92 | 5.84 | 1.83 |
| DOUBLE ROW, STRAIGHT PIN, GOLD ON CONTACTS, GOLD FLASH ON BALANCE | | | | | |
| TSW-102-08-G-D | 2 | 5.08 | 13.46 | 5.84 | .22 |
| TSW-104-08-G-D | 4 | 5.08 | 13.46 | 5.84 | .44 |
| TSW-106-08-G-D | 6 | 5.08 | 13.46 | 5.84 | .66 |
| TSW-108-08-G-D | 8 | 5.08 | 13.46 | 5.84 | .88 |
| TSW-110-08-G-D | 10 | 5.08 | 13.46 | 5.84 | 1.10 |
| TSW-112-08-G-D | 12 | 5.08 | 13.46 | 5.84 | 1.32 |
| TSW-120-08-G-D | 20 | 5.08 | 13.46 | 5.84 | 2.20 |
| TSW-124-08-G-D | 24 | 5.08 | 13.46 | 5.84 | 2.64 |
| TSW-136-08-G-D | 36 | 5.08 | 13.46 | 5.84 | 3.96 |
| TSW-150-08-G-D | 50 | 5.08 | 13.46 | 5.84 | 4.40 |
| SINGLE ROW, STRAIGHT PIN, GOLD ON CONTACTS, GOLD FLASH ON BALANCE | | | | | |
| TSW-102-08-G-S | 2 | 5.08 | 13.46 | 5.84 | .11 |
| TSW-104-08-G-S | 4 | 5.08 | 13.46 | 5.84 | .22 |
| TSW-106-08-G-S | 6 | 5.08 | 13.46 | 5.84 | .33 |
| TSW-108-08-G-S | 8 | 5.08 | 13.46 | 5.84 | .44 |
| TSW-110-08-G-S | 10 | 5.08 | 13.46 | 5.84 | .55 |
| TSW-112-08-G-S | 12 | 5.08 | 13.46 | 5.84 | .66 |
| TSW-120-08-G-S | 20 | 5.08 | 13.46 | 5.84 | 1.10 |
| TSW-124-08-G-S | 24 | 5.08 | 13.46 | 5.84 | 1.32 |
| TSW-136-08-G-S | 36 | 5.08 | 13.46 | 5.84 | 1.98 |
| TSW-150-08-G-S | 50 | 5.08 | 13.46 | 5.84 | 2.20 |
| DOUBLE ROW, STRAIGHT PIN, TIN ON CONTACTS | | | | | |
| TSW-102-08-TD | 2 | 5.08 | 13.46 | 5.84 | .19 |
| TSW-104-08-TD | 4 | 5.08 | 13.46 | 5.84 | .38 |
| TSW-106-08-TD | 6 | 5.08 | 13.46 | 5.84 | .56 |
| TSW-108-08-TD | 8 | 5.08 | 13.46 | 5.84 | .75 |
| TSW-110-08-TD | 10 | 5.08 | 13.46 | 5.84 | .94 |
| TSW-112-08-TD | 12 | 5.08 | 13.46 | 5.84 | 1.13 |
| TSW-120-08-TD | 20 | 5.08 | 13.46 | 5.84 | 1.88 |
| TSW-124-08-TD | 24 | 5.08 | 13.46 | 5.84 | 2.25 |
| TSW-136-08-TD | 36 | 5.08 | 13.46 | 5.84 | 3.38 |
| TSW-150-08-TD | 50 | 5.08 | 13.46 | 5.84 | 3.75 |
| SINGLE ROW, STRAIGHT PIN, TIN ON CONTACTS | | | | | |
| TSW-102-08-TS | 2 | 5.08 | 13.46 | 5.84 | .09 |
| TSW-104-08-TS | 4 | 5.08 | 13.46 | 5.84 | .19 |
| TSW-106-08-TS | 6 | 5.08 | 13.46 | 5.84 | .28 |
| TSW-108-08-TS | 8 | 5.08 | 13.46 | 5.84 | .38 |
| TSW-110-08-TS | 10 | 5.08 | 13.46 | 5.84 | .47 |
| TSW-112-08-TS | 12 | 5.08 | 13.46 | 5.84 | .56 |
| TSW-120-08-TS | 20 | 5.08 | 13.46 | 5.84 | .94 |
| TSW-124-08-TS | 24 | 5.08 | 13.46 | 5.84 | 1.13 |
| TSW-136-08-TS | 36 | 5.08 | 13.46 | 5.84 | 1.69 |
| TSW-150-08-TS | 50 | 5.08 | 13.46 | 5.84 | 1.88 |
| DOUBLE ROW, STRAIGHT PIN, GOLD ON CONTACTS, GOLD FLASH ON BALANCE | | | | | |
| TSW-102-14-G-D | 2 | 2.79 | 13.46 | 8.13 | .22 |
| TSW-104-14-G-D | 4 | 2.79 | 13.46 | 8.13 | .44 |
| TSW-106-14-G-D | 6 | 2.79 | 13.46 | 8.13 | .66 |
| TSW-108-14-G-D | 8 | 2.79 | 13.46 | 8.13 | .88 |
| TSW-110-14-G-D | 10 | 2.79 | 13.46 | 8.13 | 1.10 |
| TSW-112-14-G-D | 12 | 2.79 | 13.46 | 8.13 | 1.32 |
| TSW-120-14-G-D | 20 | 2.79 | 13.46 | 8.13 | 2.20 |
| TSW-124-14-G-D | 24 | 2.79 | 13.46 | 8.13 | 2.64 |
| TSW-136-14-G-D | 36 | 2.79 | 13.46 | 8.13 | 3.96 |
| TSW-150-14-G-D | 50 | 2.79 | 13.46 | 8.13 | 4.40 |

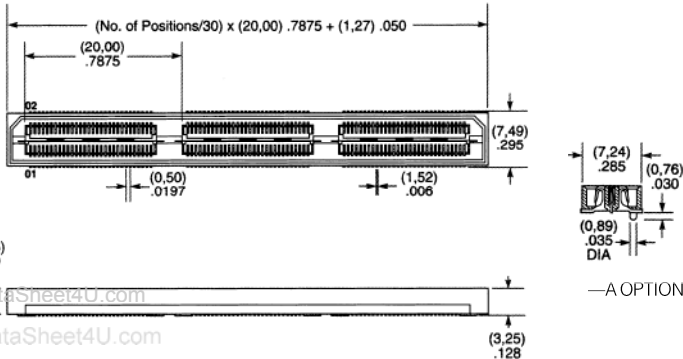
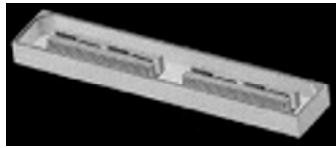
| Cat. No. | No. of Contacts Per Row | Dimensions (mm) | | | Net Price |
|--|-------------------------|-----------------|-------|------|--------------|
| | | A | B | C | |
| SINGLE ROW, STRAIGHT PIN, GOLD ON CONTACTS, GOLD FLASH ON BALANCE | | | | | |
| TSW-102-14-G-S | 2 | 2.79 | 13.46 | 8.13 | \$.11 |
| TSW-104-14-G-S | 4 | 2.79 | 13.46 | 8.13 | .22 |
| TSW-106-14-G-S | 6 | 2.79 | 13.46 | 8.13 | .33 |
| TSW-108-14-G-S | 8 | 2.79 | 13.46 | 8.13 | .44 |
| TSW-110-14-G-S | 10 | 2.79 | 13.46 | 8.13 | .55 |
| TSW-112-14-G-S | 12 | 2.79 | 13.46 | 8.13 | .66 |
| TSW-120-14-G-S | 20 | 2.79 | 13.46 | 8.13 | 1.10 |
| TSW-124-14-G-S | 24 | 2.79 | 13.46 | 8.13 | 1.32 |
| TSW-136-14-G-S | 36 | 2.79 | 13.46 | 8.13 | 1.98 |
| TSW-150-14-G-S | 50 | 2.79 | 13.46 | 8.13 | 2.20 |
| DOUBLE ROW, STRAIGHT PIN, TIN ON CONTACTS | | | | | |
| TSW-102-14-TD | 2 | 2.79 | 13.46 | 8.13 | .19 |
| TSW-104-14-TD | 4 | 2.79 | 13.46 | 8.13 | .38 |
| TSW-106-14-TD | 6 | 2.79 | 13.46 | 8.13 | .56 |
| TSW-108-14-TD | 8 | 2.79 | 13.46 | 8.13 | .75 |
| TSW-110-14-TD | 10 | 2.79 | 13.46 | 8.13 | .94 |
| TSW-112-14-TD | 12 | 2.79 | 13.46 | 8.13 | 1.13 |
| TSW-120-14-TD | 20 | 2.79 | 13.46 | 8.13 | 1.88 |
| TSW-124-14-TD | 24 | 2.79 | 13.46 | 8.13 | 2.25 |
| TSW-136-14-TD | 36 | 2.79 | 13.46 | 8.13 | 3.38 |
| TSW-150-14-TD | 50 | 2.79 | 13.46 | 8.13 | 3.75 |
| SINGLE ROW, STRAIGHT PIN, TIN ON CONTACTS | | | | | |
| TSW-102-14-TS | 2 | 2.79 | 13.46 | 8.13 | .09 |
| TSW-104-14-TS | 4 | 2.79 | 13.46 | 8.13 | .19 |
| TSW-106-14-TS | 6 | 2.79 | 13.46 | 8.13 | .28 |
| TSW-108-14-TS | 8 | 2.79 | 13.46 | 8.13 | .38 |
| TSW-110-14-TS | 10 | 2.79 | 13.46 | 8.13 | .47 |
| TSW-112-14-TS | 12 | 2.79 | 13.46 | 8.13 | .56 |
| TSW-120-14-TS | 20 | 2.79 | 13.46 | 8.13 | .94 |
| TSW-124-14-TS | 24 | 2.79 | 13.46 | 8.13 | 1.13 |
| TSW-136-14-TS | 36 | 2.79 | 13.46 | 8.13 | 1.69 |
| TSW-150-14-TS | 50 | 2.79 | 13.46 | 8.13 | 1.88 |



SAMTEC SERIES QTH 0.50 MM SMT HI-SPEED HEADERS WITH ALIGNMENT PIN MATES WITH QSH SERIES

SPECIFICATIONS; Insulation material: Liquid crystal polymer. Contact material: Phosphor bronze. SMT lead coplanarity: .004" (0.10mm) max (30-60), .006" (0.15mm) (90-150). Impedance: 50Ω average. Crosstalk: -19.2 @ 500 MHz. Mating height with QSH: .197 (5.00). Maximum processing temperature: 230°C for 60 seconds.

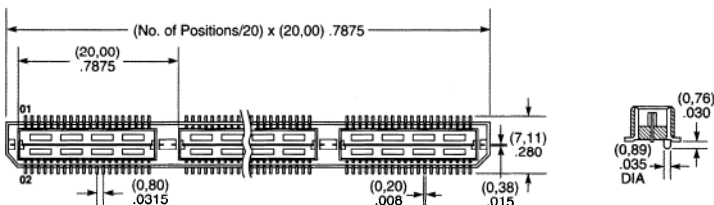
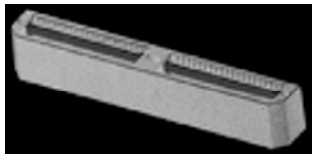
| Cat. No. | No. of Contacts Per Row | Contact Plating | Net Price |
|------------------|-------------------------|-----------------|---------------|
| QTH-030-01-F-D-A | 30 | Gold Flash | \$6.74 |
| QTH-030-01-L-D-A | 30 | Gold | 7.09 |
| QTH-060-01-F-D-A | 60 | Gold Flash | 7.71 |
| QTH-060-01-L-D-A | 60 | Gold | 8.11 |
| QTH-090-01-L-D-A | 90 | Gold | 11.15 |
| QTH-120-01-L-D-A | 120 | Gold | 13.51 |
| QTH-150-01-L-D-A | 150 | Gold | 16.89 |



SAMTEC SERIES QSH 0.50 MM SMT HI-SPEED SOCKETS WITH ALIGNMENT PIN MATES WITH QTH SERIES

SPECIFICATIONS: Insulation material: Liquid crystal polymer. Contact material: Phosphor bronze. Plating: Au over 50 μ (1.27 μ) Ni. SMT lead coplanarity: .004" (0.10mm) max (30-60), .006" (0.15mm) (90-150). Mating height with QTH: .197 (5.00). Maximum processing temperature: 230°C for 60 seconds.

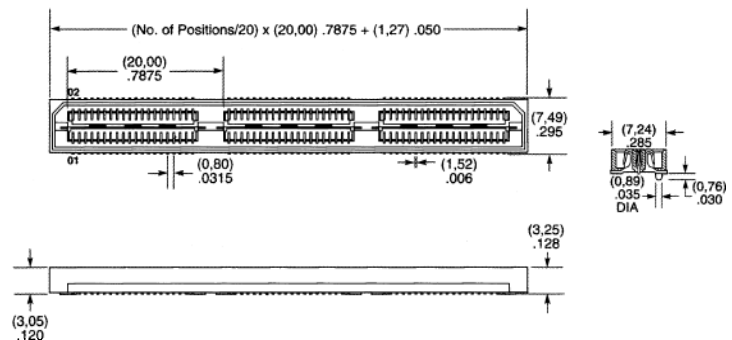
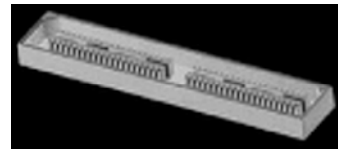
| Cat. No. | No. of Contacts Per Row | Contact Plating | Net Price |
|------------------|-------------------------|-----------------|-----------|
| QSH-030-01-F-D-A | 30 | Gold Flash | \$6.61 |
| QSH-030-01-L-D-A | 30 | Gold | 6.96 |
| QSH-060-01-F-D-A | 60 | Gold Flash | 7.55 |
| QSH-060-01-L-D-A | 60 | Gold | 7.95 |
| QSH-090-01-L-D-A | 90 | Gold | 10.93 |
| QSH-120-01-L-D-A | 120 | Gold | 13.25 |
| QSH-150-01-L-D-A | 150 | Gold | 16.57 |



SAMTEC SERIES QTE 0.80 MM SMT HI-SPEED HEADERS MATES WITH QSE SERIES

SPECIFICATIONS: Insulation material: Liquid crystal polymer. Contact material: Phosphor bronze. Plating: Au over 50 μ (1.27 μ) Ni. SMT lead coplanarity: .004" (0.10mm) max (20-60), .006" (0.15mm) (80-100). Maximum processing temperature: 230°C for 60 seconds. All Headers have alignment pins.

| Cat. No. | No. of Contacts Per Row | Contact Plating | Mating Height With QSE Series Inches (mm) | Net Price |
|------------------|-------------------------|-----------------|---|-----------|
| QTE-020-01-F-D-A | 20 | Gold Flash | .197 (5.00) | \$4.50 |
| QTE-020-01-L-D-A | 20 | Gold | .197 (5.00) | 4.73 |
| QTE-020-02-F-D-A | 20 | Gold Flash | .315 (8.00) | 4.63 |
| QTE-020-02-L-D-A | 20 | Gold | .315 (8.00) | 4.87 |
| QTE-020-03-F-D-A | 20 | Gold Flash | .433 (11.00) | 5.09 |
| QTE-020-03-L-D-A | 20 | Gold | .433 (11.00) | 5.36 |
| QTE-040-01-F-D-A | 40 | Gold Flash | .197 (5.00) | 6.42 |
| QTE-040-01-L-D-A | 40 | Gold | .197 (5.00) | 6.75 |
| QTE-040-02-F-D-A | 40 | Gold Flash | .315 (8.00) | 6.61 |
| QTE-040-02-L-D-A | 40 | Gold | .315 (8.00) | 6.96 |
| QTE-040-03-F-D-A | 40 | Gold Flash | .433 (11.00) | 7.27 |
| QTE-040-03-L-D-A | 40 | Gold | .433 (11.00) | 7.66 |
| QTE-060-01-F-D-A | 60 | Gold Flash | .197 (5.00) | 7.71 |
| QTE-060-01-L-D-A | 60 | Gold | .197 (5.00) | 8.11 |
| QTE-060-02-L-D-A | 60 | Gold | .315 (8.00) | 8.35 |
| QTE-060-03-F-D-A | 60 | Gold Flash | .433 (11.00) | 8.72 |
| QTE-060-03-L-D-A | 60 | Gold | .433 (11.00) | 9.19 |
| QTE-080-01-L-D-A | 80 | Gold | .197 (5.00) | 9.91 |
| QTE-080-02-L-D-A | 80 | Gold | .315 (8.00) | 10.20 |
| QTE-080-03-L-D-A | 80 | Gold | .433 (11.00) | 11.23 |
| QTE-080-04-L-D-A | 80 | Gold | .630 (16.00) | 15.36 |
| QTE-100-01-L-D-A | 100 | Gold | .197 (5.00) | 11.26 |
| QTE-100-02-L-D-A | 100 | Gold | .315 (8.00) | 11.60 |
| QTE-100-03-L-D-A | 100 | Gold | .433 (11.00) | 12.76 |



SAMTEC SERIES QSE 0.80 MM SMT HI-SPEED SOCKETS MATES WITH QTE SERIES

SPECIFICATIONS: Insulation material: Liquid crystal polymer. Contact material: Phosphor bronze. Plating: Au over 50 μ (1.27 μ) Ni. SMT lead coplanarity: .004" (0.10mm) max (20-40), .006" (0.15mm) (60-100). Maximum processing temperature: 230°C for 60 seconds. All Sockets have alignment pins.

| Cat. No. | No. of Contacts Per Row | Contact Plating | Net Price |
|------------------|-------------------------|-----------------|-----------|
| QSE-020-01-F-D-A | 20 | Gold Flash | \$4.41 |
| QSE-020-01-L-D-A | 20 | Gold | 4.64 |
| QSE-040-01-F-D-A | 40 | Gold Flash | 6.29 |
| QSE-040-01-L-D-A | 40 | Gold | 6.63 |
| QSE-060-01-F-D-A | 60 | Gold Flash | 7.55 |
| QSE-060-01-L-D-A | 60 | Gold | 7.95 |
| QSE-080-01-L-D-A | 80 | Gold | 9.72 |
| QSE-100-01-L-D-A | 100 | Gold | 11.04 |