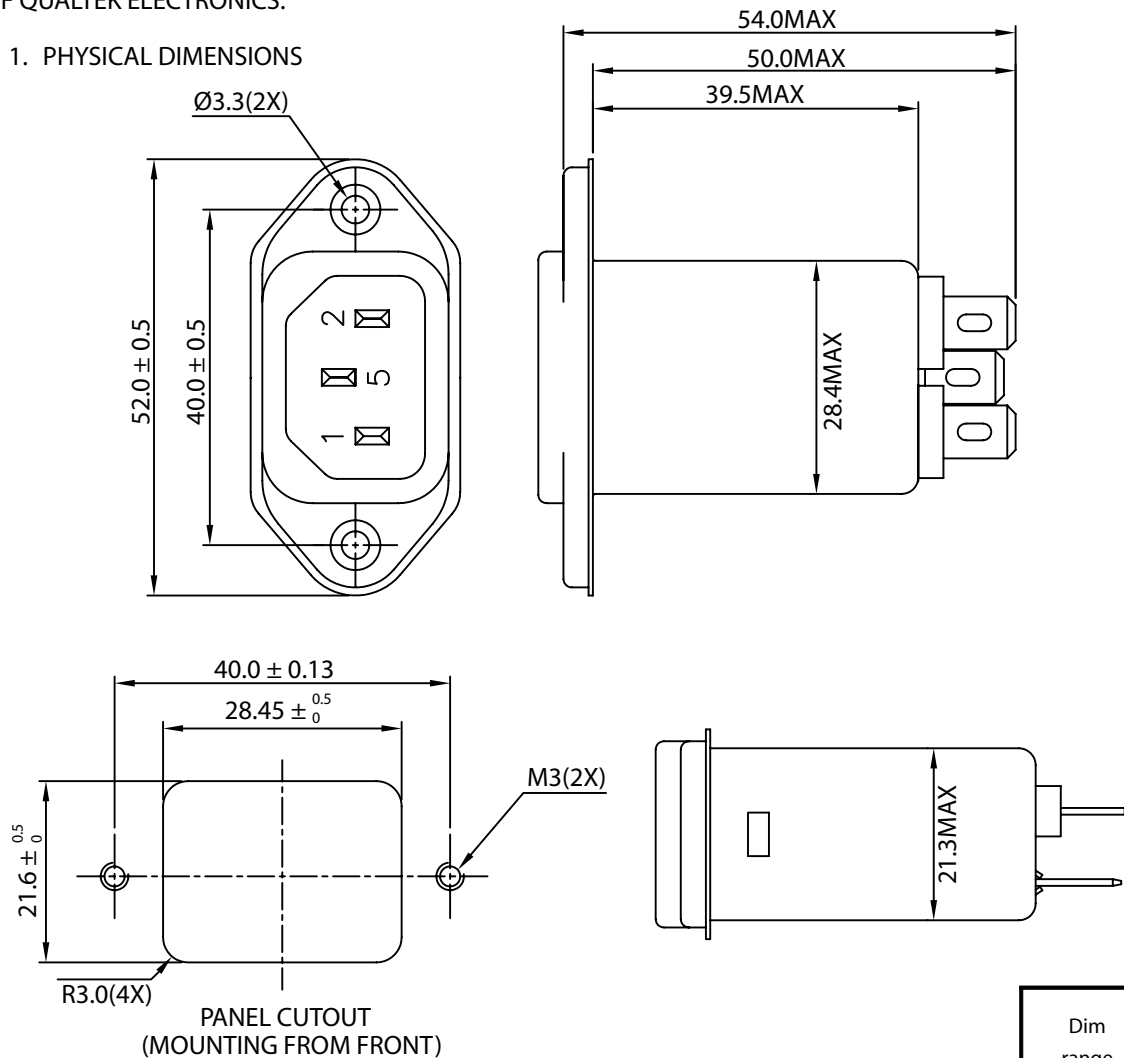


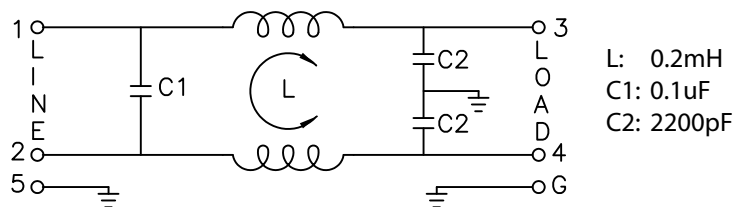
THESE DRAWINGS ARE THE PROPERTY OF QUALTEK ELECTRONICS AND NOT TO BE REPRODUCED FOR OR COMMUNICATED TO A THIRD PARTY WITHOUT THE EXPRESS WRITTEN PERMISSION OF AN OFFICER OF QUALTEK ELECTRONICS.

| REVISION |                        |          |          |
|----------|------------------------|----------|----------|
| REV.     | DESCRIPTION            | DATE     | APPROVED |
| B        | RoHS Compliancy        | 06-01-06 | DP       |
| C        | Updated Specifications | 10-13-08 | LY       |

1. PHYSICAL DIMENSIONS



2. ELECTRICAL SCHEMATIC



ELECTRICAL CHARACTERISTICS:

- 1-1. VOLTAGE RATING.....115/250VAC
- 1-2. CURRENT RATING  
 A. @ 115 VAC.....10 A RMS MAX  
 B. @ 250 VAC.....10 A RMS MAX
- 1-3. OPERATING FREQUENCY.....50/60Hz
- 1-4. LEAKAGE CURRENT: EACH LINE TO GROUND  
 A. @ 115 VAC 60Hz.....0.20 mA MAX  
 B. @ 250 VAC 50Hz.....0.40 mA MAX
- 1-5. HIPOT RATING (FOR ONE MINUTE)  
 A. LINE TO GROUND.....2250 VDC  
 B. LINE TO LINE.....1450 VDC
- 1-6. MINIMUM INSERTION LOSS IN dB: (AT 50 OHM SYSTEM)

| FREQ. MHz    | .01 | .05 | .10 | .15 | .50 | 1.0 | 5.0 | 10 | 30 |
|--------------|-----|-----|-----|-----|-----|-----|-----|----|----|
| COM. MODE dB | /   | 1   | 2   | 4   | 10  | 13  | 28  | 35 | 40 |
| DIF. MODE dB | /   | 1   | 2   | 4   | 10  | 15  | 25  | 30 | 40 |

- 1-7. OPERATING TEMPERATURE.....-25° TO +100° C
- 1-8. SAFETY:
- 1-9. RoHS COMPLIANT

**CONTROLLED**

| Dim range (mm) | Tolerance +/- (mm) | Qualtek Electronics Corp.<br>PPC DIVISION  |  |                         |
|----------------|--------------------|--|--|-------------------------|
|                |                    | Part Number: 858-10/015 <span style="border: 1px solid green; padding: 2px;">RoHS Compliant</span> |  | Description: EMI FILTER |
| 0-1            | 0.15               | UNIT: mm   |  | REV. C                  |
| 1-6            | 0.20               | Drawn / Date   |  | Checked / Date          |
| 6-18           | 0.30               | B.ZHANG<br>01-06-03  |  | Approved / Date         |
| 18-50          | 0.50               | 01-06-03   |  | JJH / 01-06-03          |
| 50-120         | 0.70               |  |  |                         |
| 120-250        | 0.90               |  |  |                         |
| 250-500        | 1.20               |  |  |                         |