

PLEASE CHECK WWW.MOLEX.COM FOR LATEST PART INFORMATION

Part Number: [0350289502](#)
Status: **Active**
Description: 1.78mm (.070") Tab Terminal, Female, 20+2 AWG (0.52x2mm²), Pre-Tin Plated, Reel

Documents:

| | |
|--|--|
| Drawing (PDF) | Product Specification PS-35028-003 (PDF) |
| Product Specification PS-35028-001 (PDF) | Product Specification PS-35028-004 (PDF) |
| Product Specification PS-35028-002 (PDF) | RoHS Certificate of Compliance (PDF) |

General

| | |
|-------------------------|-----------------------|
| Product Family | Crimp Terminals |
| Series | 35028 |
| Crimp Quality Equipment | Yes |
| Product Name | N/A |

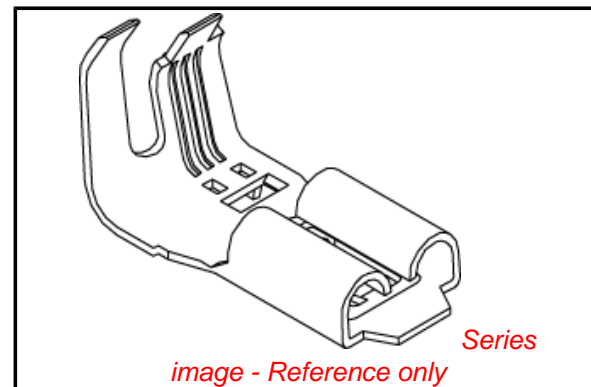
Physical

| | |
|--------------------------------|----------------------|
| Gender | Female |
| Material - Metal | Phosphor Bronze |
| Material - Plating Mating | Tin |
| Material - Plating Termination | Tin |
| Packaging Type | Reel |
| Plating min: Mating (µin) | 32.00 |
| Plating min: Mating (µm) | 0.800 |
| Plating min: Termination (µin) | 32.00 |
| Plating min: Termination (µm) | 0.80 |
| Termination Interface: Style | Crimp or Compression |
| Wire Insulation Diameter | 3.60mm (.142") max. |
| Wire Size AWG | 20+20 |
| Wire Size mm ² | N/A |

Material Info

Reference - Drawing Numbers

| | |
|-----------------------|--|
| Product Specification | PS-35028-001, PS-35028-002, PS-35028-003, PS-35028-004 |
| Sales Drawing | SD-35028-**** |



EU RoHS

**ELV and RoHS
Compliant**
**REACH SVHC
Contains SVHC: No**
**Halogen-Free
Status**

China RoHS



**Need more information on product
environmental compliance?**

Email productcompliance@molex.com
 For a multiple part number RoHS Certificate of Compliance, [click here](#)

Please visit the [Contact Us](#) section for any non-product compliance questions.

Search Parts in this Series

[35028Series](#)

Mates With

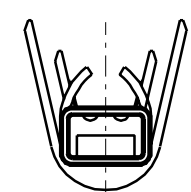
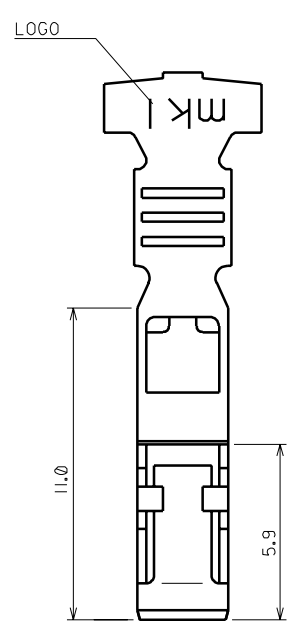
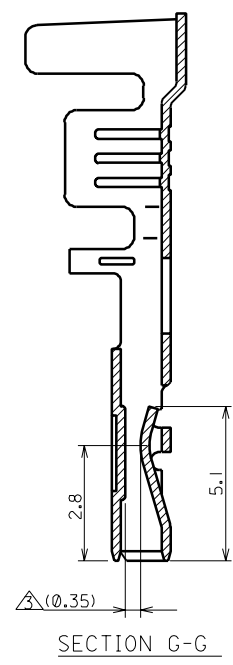
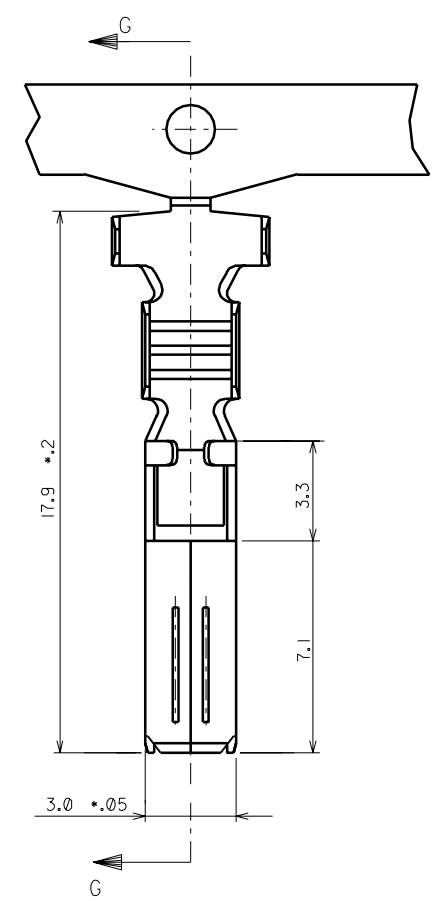
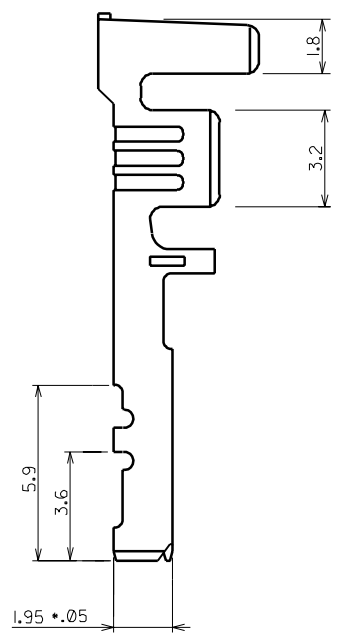
2.54mm (.100") Male Tab

Use With

[35153](#)

DO NOT SCALE DRAWING
DIMENSION IN METRIC

PROJECT NO. SIMILAR ITEM DWG. NO. SD-35028-*****



NOTES

- MATERIAL: PHOSPHOR BRONZE
THICKNESS : 0.30 ± 0.02
WIDTH : 22.8 ± 0.08
- PLATING: PREPLATING (REFLOW TREATMENT)
- MALE TAB (THICK 0.6 ± 0.05) FIT.
-INSERTION FORCE: 0.8kgf. MAX.
-RETENTION FORCE: 0.3kgf. MIN.
- WIRE SIZE : AWG #20 × 2 35028-9502
AWG #18 ± #22 35028-9010
AWG #14 ± #20 35028-1111

| | | | | | | | | | |
|---|----------------------------------|-------------------|---|--|--|--|--|--------------------|-----------|
| REVISED EC NO. KOR2002-0074 DRWN: C.B.CHIN 02/02/19 CHK: W.Y.YANG APPR: C.W.LEE | DESCRIPTION MAJOR CRITICAL | QUALITY SYMBOLS | GENERAL TOLERANCES: (UNLESS SPECIFIED) | SCALE 6:1 | DESIGN UNITS <input checked="" type="checkbox"/> mm <input type="checkbox"/> INCH | THIRD ANGLE PROJECTION | DIMENSIONS: <input type="checkbox"/> mm <input type="checkbox"/> INCH <input checked="" type="checkbox"/> mm ONLY | SHT | REV |
| | | MAJOR CRITICAL | mm | INCH | DRAWN BY & DATE H.J.KIM 94/06/25 | TITLE: .070 FEMALE TERMINAL | | | |
| H | REV | 4 PLACES | ±0. | ±. | CHECKED BY & DATE B.K.CHOI 94/06/25 | MOLEX MOLEX INCORPORATED | | | |
| | | 3 PLACES | ±0. | ±. | APPROVED BY & DATE | MATERIAL NO. SEE NOTES | DRAWING NO. SD-35028-**** | SHEET NO. IOF 1 | SIZE B |
| | | 2 PLACES | ±0.15 | ±. | CAD FILENAME S35028.DGN | THIS DRAWING CONTAINS INFORMATION THAT IS PROPRIETARY TO MOLEX INCORPORATED AND SHOULD NOT BE USED WITHOUT WRITTEN PERMISSION. | | | |
| | | 1 PLACE | ±0.15 | ±. | DRAFT WHERE APPLICABLE MUST REMAIN WITHIN DIMENSIONS | | | | SIZE B |
| | | ANGULAR: ± 0.5° | | THIS DRAWING CONTAINS INFORMATION THAT IS PROPRIETARY TO MOLEX INCORPORATED AND SHOULD NOT BE USED WITHOUT WRITTEN PERMISSION. | | | | | |