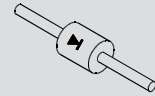


Spice Model

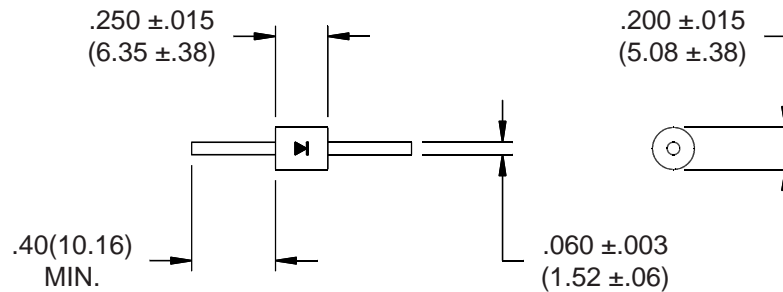


Z25S



Electrical Characteristics and Maximum Ratings

Part Number	Working Reverse Voltage (V _{rw})	Average Rectified Current (I _o)		Reverse Current @ V _{rw} (I _r)		Forward Voltage (V _f)		1 Cycle Surge Current t _p =8.3ms (I _{fsm})	Repetitive Surge Current (I _{frm})	Reverse Recovery Time (3) (T _{rr})	Thermal Impedance θ _{J-L}		Junction Cap. @ 50VDC @ 1kHz (C _j)
		55°C(1)	100°C(2)	25°C	100°C	25°C					25°C	25°C	
	Volts	Amps	Amps	μA	μA	Volts	Amps	Amps	Amps	ns	°C/W	°C/W	pF
Z25S	2500	2.0	1.0	1.0	25	5.5	2.0	60.0	10.0	3000	3	10	20



Name	Parameter	Value	Units
I _s	Reverse leakage current	5.0E-07	Amps
N	Emission coefficient	8.5	
T	Temperature	25	C
RS	Diode series resistance	0.04	Ohm
TT	Transit time	3000	nS
C _{J0}	Zero-bias junction capacitance	30.01	pF
VJ	Bulk junction potential	4.92	Volts
M	Grading coefficient	0.5	
EG	Energy-band gap	1.11	Volts
XTI	Temperature coefficient	3	
KF	Flicker-noise coefficient	0	
AF	Flicker-noise exponent	1	
FC	Coefficient for capacitance	0.5	
BV	Diode breakdown voltage	3600	Volts
IBV	Diode breakdown current	100	uAmps

Dimensions: In. (mm) * All temperatures are ambient unless otherwise noted. * Data subject to change without notice.



Voltage Multipliers, Inc.
8711 W. Roosevelt Ave.
Visalia, CA 93291

Tel (559) 651-1402
Fax (559) 651-0740
www.voltagemultipliers.com