

**PLEASE CHECK WWW.MOLEX.COM FOR LATEST PART INFORMATION**

**Part Number:** [0879571005](#)  
**Status:** **Active**  
**Description:** 2.50mm (.098") Pitch Header, Right Angle, Through Hole, 5 Circuits, Tin (Sn) Overall Plating, Tray Packaging, Lead-free

**Documents:**

[Drawing \(PDF\)](#) [RoHS Certificate of Compliance \(PDF\)](#)

**General**

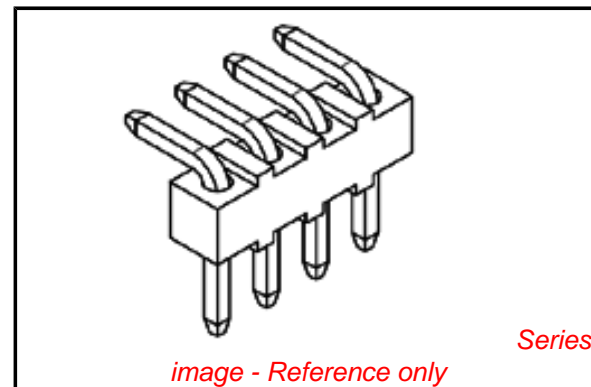
Product Family	PCB Headers
Series	<a href="#">87957</a>
Application	Board-to-Board, Wire-to-Board
Product Name	N/A

**Physical**

Breakaway	Yes
Circuits (Loaded)	5
Circuits (maximum)	5
Color - Resin	Black
First Mate / Last Break	No
Glow-Wire Compliant	No
Guide to Mating Part	No
Keying to Mating Part	None
Lock to Mating Part	None
Material - Metal	Brass
Material - Plating Mating	Tin
Material - Plating Termination	Nickel
Material - Resin	Nylon
Number of Rows	1
Orientation	Right Angle
PC Tail Length (in)	0.146 In
PC Tail Length (mm)	3.71 mm
PCB Locator	No
PCB Retention	None
PCB Thickness Recommended (in)	0.062 In
PCB Thickness Recommended (mm)	1.60 mm
Packaging Type	Tray
Pitch - Mating Interface (in)	0.098 In
Pitch - Mating Interface (mm)	2.50 mm
Pitch - Term. Interface (in)	0.098 In
Pitch - Term. Interface (mm)	2.50 mm
Plating min: Mating (µin)	200
Plating min: Mating (µm)	5.00
Plating min: Termination (µin)	49
Plating min: Termination (µm)	1.25
Polarized to Mating Part	No
Polarized to PCB	No
Shrouded	No
Stackable	No
Surface Mount Compatible (SMC)	Yes
Temperature Range - Operating	-55°C to +105°C
Termination Interface: Style	Through Hole

**Electrical**

Current - Maximum per Contact	3A
Voltage - Maximum	250V



**EU RoHS**

**ELV and RoHS Compliant**  
**REACH SVHC**  
 Not Reviewed  
**Halogen-Free Status**  
 Not Reviewed

**China RoHS**



**Need more information on product environmental compliance?**

Email [productcompliance@molex.com](mailto:productcompliance@molex.com)  
 For a multiple part number RoHS Certificate of Compliance, [click here](#)

Please visit the [Contact Us](#) section for any non-product compliance questions.

**Search Parts in this Series**

[87957Series](#)

**Mates With**

KK® 2.50mm (.098") Crimp Terminal Housing

**Solder Process Data**

Duration at Max. Process Temperature (seconds)	14
Lead-free Process Capability	Wave Capable (TH only)
Max. Cycles at Max. Process Temperature	1
Process Temperature max. C	265

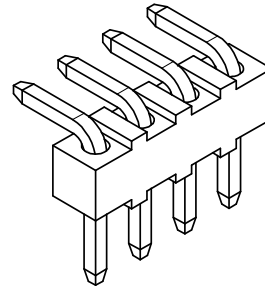
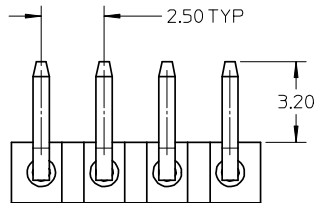
**Material Info****Reference - Drawing Numbers**

Sales Drawing	SD-87957-010
---------------	--------------

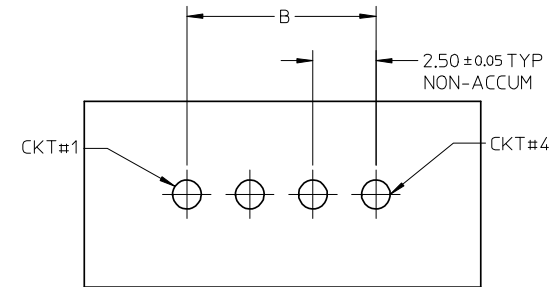
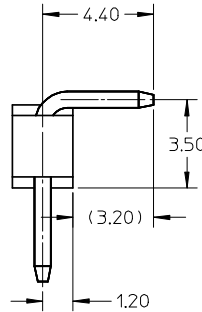
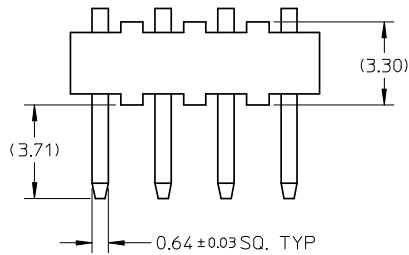
This document was generated on 04/05/2010

**PLEASE CHECK [WWW.MOLEX.COM](http://WWW.MOLEX.COM) FOR LATEST PART INFORMATION**

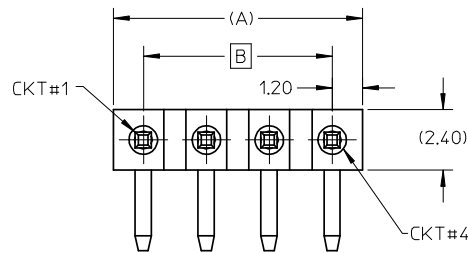
PART NO FOR TRAY PACKAGING	CKT SIZE	DIMENSION	
		A	B
87957-1004	4	9.90	7.50
87957-1005	5	12.40	10.00
87957-1010	10	24.90	22.50



- NOTES:
- FOR ILLUSTRATION PURPOSE, 4 CKT SIZE IS AS SHOWN.
  - MATERIAL:
    - HOUSING: NYLON, GLASS-FILLED, UL94V-2
    - COLOR: BLACK.
    - TERMINAL: COPPER ALLOY, 0.64MM SQ
  - PLATING TYPE:
    - 5.00µm MIN TIN OVER
    - 1.25µm MIN NICKEL UNDERPLATE.
  - PIN PUSHOUT FORCE: 1KG MIN IN EITHER DIRECTION
  - PART TO BE PACKED IN TRAY
  - PRODUCT SPEC PS-87920-019 APPLIED
  - WAFER TO BE FLAT WITHIN 0.003mm/mm
  - RECOMMENDED PCB THICKNESS 1.60±0.10mm



RECOMMENDED PCB LAYOUT



<p><b>NEW RELEASE</b>                  EC NO: S2008-0979                  DRWN:ATSEE 2008/06/25                  CHKD:SKANG 2008/06/25                  APPR:MLONG 2008/06/25</p>	<p>QUALITY SYMBOLS</p> <p>▽=0                  ∇=0</p>	<p>GENERAL TOLERANCES (UNLESS SPECIFIED)</p> <table border="1"> <thead> <tr> <th></th> <th>mm</th> <th>INCH</th> </tr> </thead> <tbody> <tr> <td>4 PLACES</td> <td>± ---</td> <td>± ---</td> </tr> <tr> <td>3 PLACES</td> <td>± ---</td> <td>± ---</td> </tr> <tr> <td>2 PLACES</td> <td>± 0.20</td> <td>± ---</td> </tr> <tr> <td>1 PLACE</td> <td>± ---</td> <td>± ---</td> </tr> </tbody> </table> <p>ANGULAR ± 3 °</p>		mm	INCH	4 PLACES	± ---	± ---	3 PLACES	± ---	± ---	2 PLACES	± 0.20	± ---	1 PLACE	± ---	± ---	<p>DIMENSION STYLE</p> <p>MM ONLY</p>	<p>SCALE</p> <p>NTS</p>	<p>DESIGN UNITS</p> <p>METRIC</p>	<p>THIRD ANGLE PROJECTION</p>
		mm	INCH																		
	4 PLACES	± ---	± ---																		
	3 PLACES	± ---	± ---																		
2 PLACES	± 0.20	± ---																			
1 PLACE	± ---	± ---																			
		<table border="1"> <thead> <tr> <th>DRAWN BY</th> <th>DATE</th> <th>TITLE</th> </tr> </thead> <tbody> <tr> <td>ATSEE</td> <td>2008/01/25</td> <td rowspan="2">CUSTOM HEADER 2.50MM SINGLE ROW HEADER SINGLE WAFER RIGHT ANGLE</td> </tr> <tr> <td>SKANG</td> <td>2008/02/05</td> </tr> <tr> <td>APPROVED BY</td> <td>DATE</td> <td rowspan="2">MOLEX INCORPORATED</td> </tr> <tr> <td>MLONG</td> <td>2008/02/06</td> </tr> </tbody> </table>	DRAWN BY	DATE	TITLE	ATSEE	2008/01/25	CUSTOM HEADER 2.50MM SINGLE ROW HEADER SINGLE WAFER RIGHT ANGLE	SKANG	2008/02/05	APPROVED BY	DATE	MOLEX INCORPORATED	MLONG	2008/02/06						
DRAWN BY	DATE	TITLE																			
ATSEE	2008/01/25	CUSTOM HEADER 2.50MM SINGLE ROW HEADER SINGLE WAFER RIGHT ANGLE																			
SKANG	2008/02/05																				
APPROVED BY	DATE	MOLEX INCORPORATED																			
MLONG	2008/02/06																				
		<p>DRAFT WHERE APPLICABLE MUST REMAIN WITHIN DIMENSIONS</p>	<p>MATERIAL NO.</p> <p>SEE TABLE</p>	<p>DOCUMENT NO.</p> <p>SD-87957-010</p>	<p>SHEET NO.</p> <p>1 OF 1</p>																
			<p>SIZE</p> <p>A3</p>	<p>THIS DRAWING CONTAINS INFORMATION THAT IS PROPRIETARY TO MOLEX INCORPORATED AND SHOULD NOT BE USED WITHOUT WRITTEN PERMISSION</p>																	