

**PLEASE CHECK WWW.MOLEX.COM FOR LATEST PART INFORMATION**

**Part Number:** [0894010517](#)  
**Status:** **Active**  
**Description:** 2.00mm (.079") Pitch Wire-to-Board Header, Right Angle, 5 Circuits, Black

**Documents:**

[3D Model](#) [Product Specification PS-87369-0001 \(PDF\)](#)  
[Drawing \(PDF\)](#) [RoHS Certificate of Compliance \(PDF\)](#)

**Agency Certification**

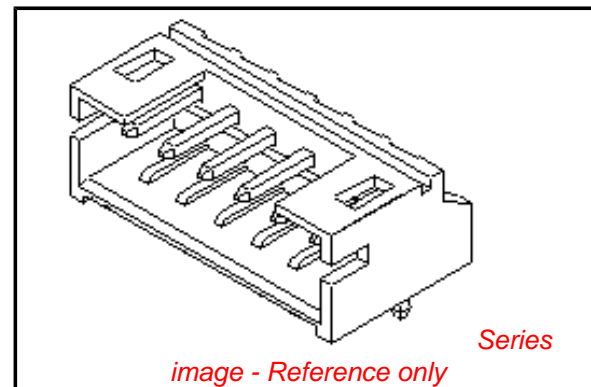
CSA LR19980  
 UL E29179

**General**

Product Family PCB Headers  
 Series [89401](#)  
 Application Wire-to-Board  
 Comments with Black Housing  
 Product Name N/A

**Physical**

Breakaway No  
 Circuits (Loaded) 5  
 Circuits (maximum) 5  
 Color - Resin Natural  
 Durability (mating cycles max) 30  
 First Mate / Last Break No  
 Flammability 94V-0  
 Glow-Wire Compliant No  
 Guide to Mating Part No  
 Keying to Mating Part None  
 Lock to Mating Part Yes  
 Mated Height (in) 0.199 In  
 Mated Height (mm) 5.05 mm  
 Material - Plating Mating Tin  
 Material - Plating Termination Tin  
 Material - Resin Nylon  
 Number of Rows 1  
 Orientation Right Angle  
 PC Tail Length (in) 0.118 In  
 PC Tail Length (mm) 3.00 mm  
 PCB Locator No  
 PCB Retention Yes  
 PCB Thickness Recommended (in) 0.045 In  
 PCB Thickness Recommended (mm) 1.20 mm  
 Packaging Type Bag  
 Pitch - Mating Interface (in) 0.079 In  
 Pitch - Mating Interface (mm) 2.00 mm  
 Plating min: Mating (µin) 50  
 Plating min: Mating (µm) 1.27  
 Plating min: Termination (µin) 50  
 Plating min: Termination (µm) 1.27  
 Polarized to Mating Part No  
 Polarized to PCB No  
 Shrouded Partial  
 Stackable No  
 Temperature Range - Operating -25°C to +85°C



**EU RoHS**

**ELV and RoHS Compliant**  
**REACH SVHC**  
 Not Reviewed  
**Halogen-Free Status**  
**Not Reviewed**

**China RoHS**



**Need more information on product environmental compliance?**

Email [productcompliance@molex.com](mailto:productcompliance@molex.com)  
 For a multiple part number RoHS Certificate of Compliance, [click here](#)

Please visit the [Contact Us](#) section for any non-product compliance questions.

**Search Parts in this Series**

[89401Series](#)

**Mates With**

[87369 Crimp Housing](#)

Termination Interface: Style

Through Hole

**Electrical**

Current - Maximum per Contact

4A

Voltage - Maximum

250V

**Material Info**

**Reference - Drawing Numbers**

Product Specification

PS-87369-0001

Sales Drawing

SD-89401-\*\*\*1\*

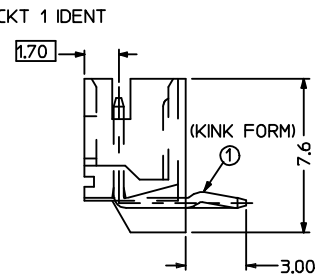
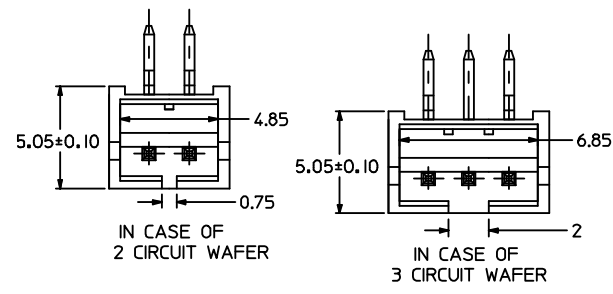
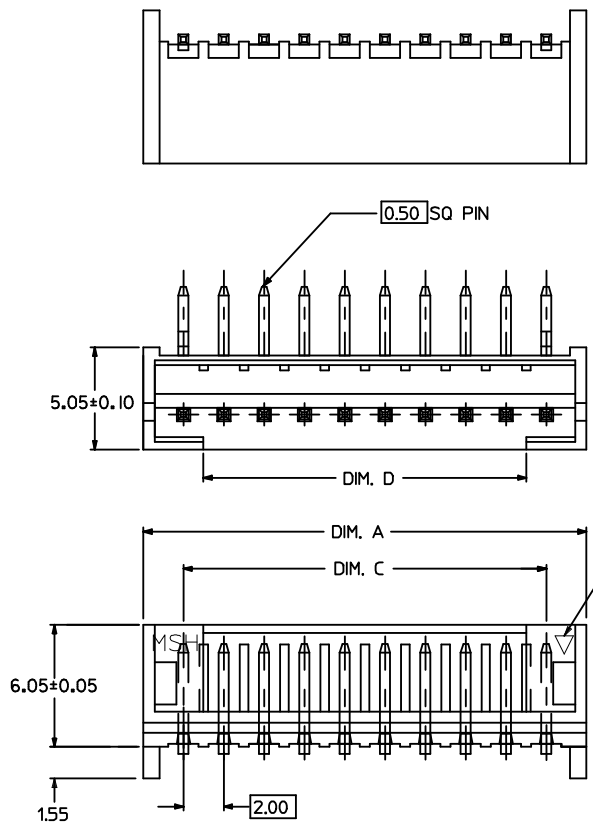
This document was generated on 06/08/2010

**PLEASE CHECK [WWW.MOLEX.COM](http://WWW.MOLEX.COM) FOR LATEST PART INFORMATION**

CIRCUITS	ORDER NO.	DIM. C	DIM. D	DIM. A	REMARK
2	89401-021*	2.00	0.75	6.00	
3	89401-031*	4.00	2.00	8.00	
4	89401-041*	6.00	4.00	10.00	
5	89401-051*	8.00	6.00	12.00	VOID PIN 4
	89401-0520				
6	89401-061*	10.00	8.00	14.00	
7	89401-071*	12.00	10.00	16.00	
8	89401-081*	14.00	12.00	18.00	
9	89401-091*	16.00	14.00	20.00	
10	89401-101*	18.00	16.00	22.00	VOID PIN 7
	89401-1020				
11	89401-111*	20.00	18.00	24.00	
12	89401-121*	22.00	20.00	26.00	
13	89401-131*	24.00	22.00	28.00	
14	89401-141*	26.00	24.00	30.00	
15	89401-151*	28.00	26.00	32.00	
16	89401-161*	30.00	28.00	34.00	

KINK TO BE APPLIED AS FOLLOW

CKT NO. CKT	1	2	3	4	5	N-2	N-1	N
6 CKT	①	—	—	—	—	—	—	①
5 CKT	①	—	—	—	①	—	—	—
4 CKT	①	—	—	①	—	—	—	—
3 CKT	①	—	①	—	—	—	—	—
2 CKT	①	①	—	—	—	—	—	—

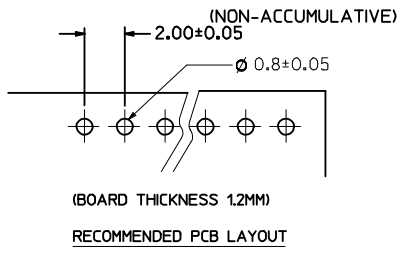


PART NO. LEGEND  
89401 - \*\* 1(2) \*

CKT SIZE

COLOR OPTION  
0 - NATURAL (WHITE)  
2 - RED  
3 - YELLOW  
4 - BLUE  
6 - GREEN  
7 - BLACK

- NOTE:
- PRODUCT SPEC. PS-87369-0001 APPLIES.
  - BULK PACK IN PVC BAG WITH 1000 PCS PER BAG.
  - MATERIAL :  
HOUSING - NYLON 66 94V0.COLOR: SEE OPTION  
TERMINAL - BRASS
  - FINISH :  
TERMINAL - TIN THICKNESS 1.27-2.54 MICROMETER OVER  
NICKEL THICKNESS 2.54 MICROMETER MIN OVERALL  
COPPER THICKNESS 1.07 MICROMETER MIN OVERALL



<b>NEW RELEASE</b> EC NO: SH2006-0287 DR:WINDHU 2005/12/06 CH:KD-HARVEY 2005/12/08 APPR:GCHEN 2005/12/09	QUALITY SYMBOLS ▽=0 ∇=0	GENERAL TOLERANCES (UNLESS SPECIFIED) mm INCH 4 PLACES ± --- ± --- 3 PLACES ± --- ± --- 2 PLACES ± 0.25 ± --- 1 PLACE ± 0.25 ± --- ANGULAR ± 3 °	DIMENSION STYLE MM ONLY DRAWN BY: SAM SHIN DATE: 1998/10/22 CHECKED BY: _____ DATE: _____ APPROVED BY: _____ DATE: _____	SCALE 1:4 DESIGN UNITS METRIC THIRD ANGLE PROJECTION	TITLE 2.0MM WIRE-BOARD RIGHT ANGLE HEADER		
				MATERIAL NO. SEE CHART	DOCUMENT NO. SD-89401-**1*	SHEET NO. 1 OF 1	
			DRAFT WHERE APPLICABLE MUST REMAIN WITHIN DIMENSIONS	SIZE A3	THIS DRAWING CONTAINS INFORMATION THAT IS PROPRIETARY TO MOLEX INCORPORATED AND SHOULD NOT BE USED WITHOUT WRITTEN PERMISSION		
					MOLEX INCORPORATED		