

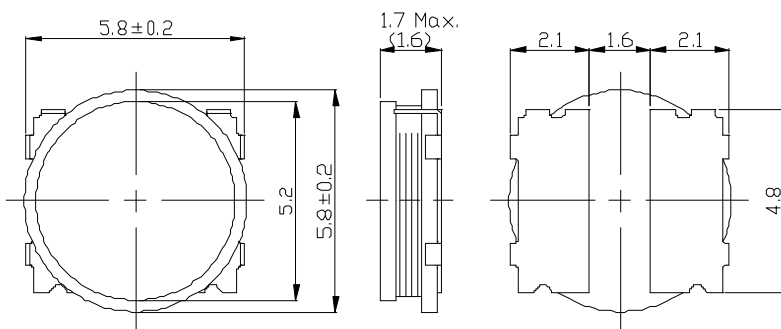
# SMD Power Inductor CDH5D16



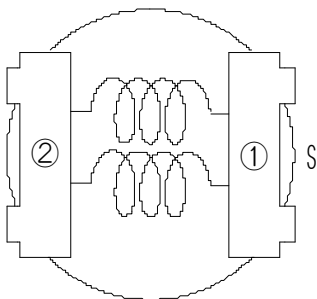
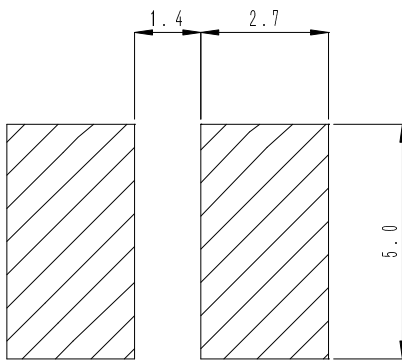
## Description

- Ferrite drum core construction
- Magnetically unshielded
- L × W × H: 6.0 × 6.0 × 1.7 mm Max.
- Product weight: 0.2g(Ref.)
- Moisture Sensitivity Level: 1
- RoHS compliance.
- Halogen Free available.

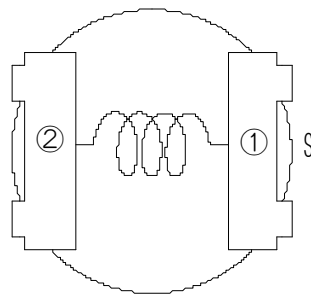
## Dimension - [mm]



## Land pattern and Schematics - [mm]



(1.1 μH ~ 3.1 μH)



(4.7 μH ~ 33 μH)

## Environmental Data

- Operating temperature range: -40°C ~ +105°C (including coil's self temperature rise)
- Storage temperature range: -40°C ~ +105°C
- Solder reflow temperature: 260 °C peak.

## Packaging

- Carrier tape and reel packaging
- 13.0" diameter reel
- 3000pcs per reel

## Applications

- Ideally used in HDD, LED, etc.

# SMD Power Inductor CDH5D16



## Electrical Characteristics

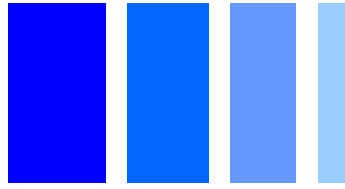
Part No.	Stamp	Inductance ( $\mu$ H) [Within] ※1	D.C.R. (m $\Omega$ ) [Within] (at 20°C)	Saturation current (A) ※2 (at 20°C)	Temperature rise current (A) ※3
CDH5D16HF-1R1MC	1R1	1.1 $\pm$ 20%	23 $\pm$ 20%	4.72	4.05
CDH5D16HF-1R5MC	1R5	1.5 $\pm$ 20%	28 $\pm$ 20%	4.08	3.70
CDH5D16HF-2R5MC	2R5	2.5 $\pm$ 20%	40 $\pm$ 20%	3.26	3.10
CDH5D16HF-3R1MC	3R1	3.1 $\pm$ 20%	46 $\pm$ 20%	2.96	2.90
CDH5D16HF-4R7MC	4R7	4.7 $\pm$ 20%	69 $\pm$ 20%	2.40	2.32
CDH5D16HF-6R8MC	6R8	6.8 $\pm$ 20%	97 $\pm$ 20%	2.00	1.90
CDH5D16HF-100MC	100	10 $\pm$ 20%	120 $\pm$ 20%	1.65	1.68
CDH5D16HF-150MC	150	15 $\pm$ 20%	205 $\pm$ 20%	1.34	1.24
CDH5D16HF-220MC	220	22 $\pm$ 20%	311 $\pm$ 20%	1.10	1.03
CDH5D16HF-330MC	330	33 $\pm$ 20%	465 $\pm$ 20%	0.90	0.84

※1. Measuring condition: at 100kHz.

※2. Saturation current: The value of D.C. current when the inductance decreases to 70% of its nominal value.

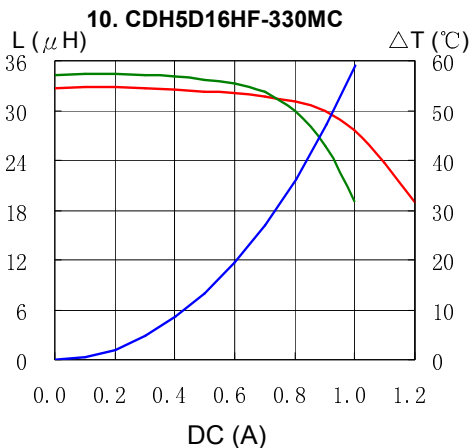
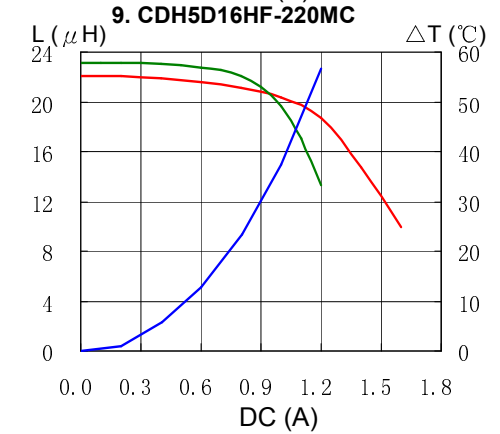
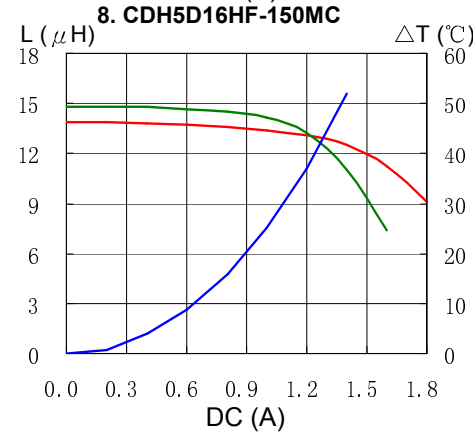
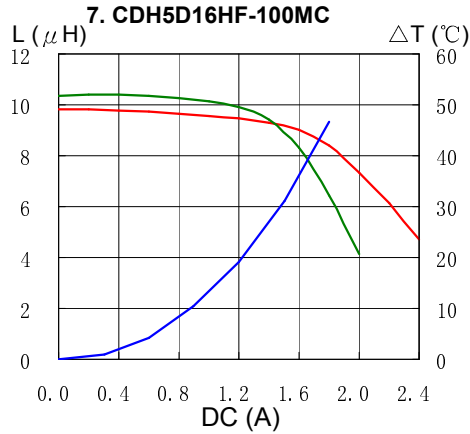
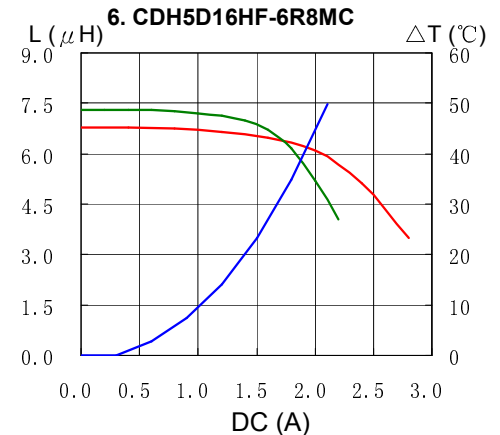
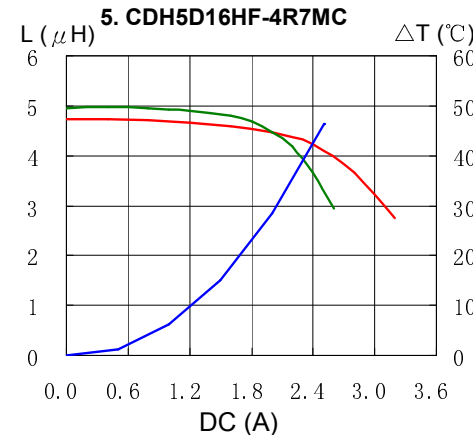
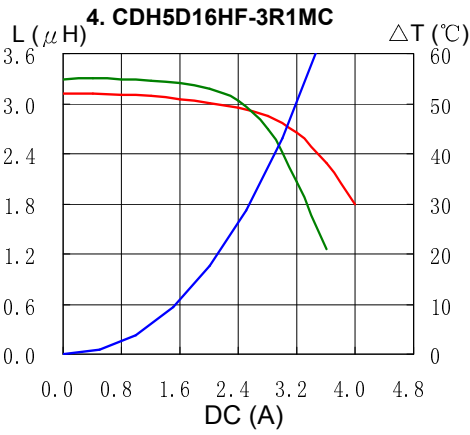
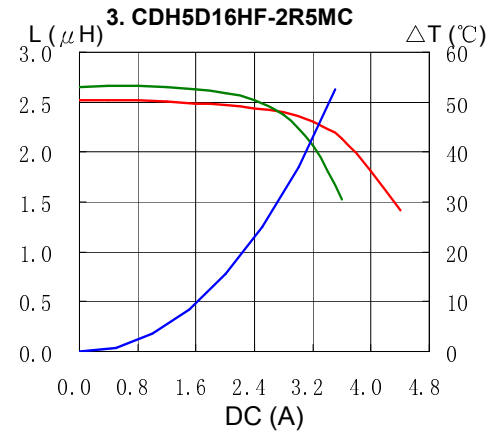
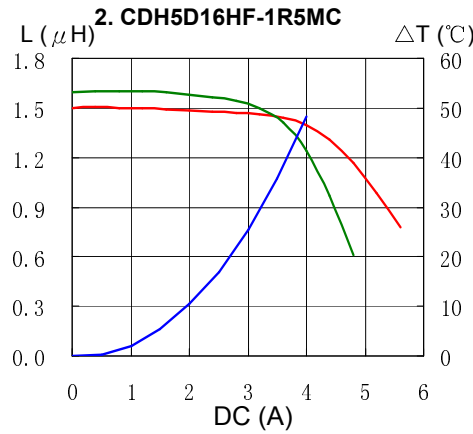
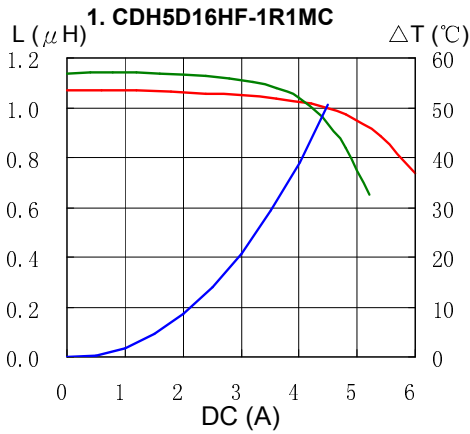
※3. Temperature rise current: The value of D.C. current when the temperature rise is  $\Delta t=40^{\circ}\text{C}$  ( $T_a=20^{\circ}\text{C}$ ).

# SMD Power Inductor CDH5D16



## Saturation Current & Temperature Rise Graph

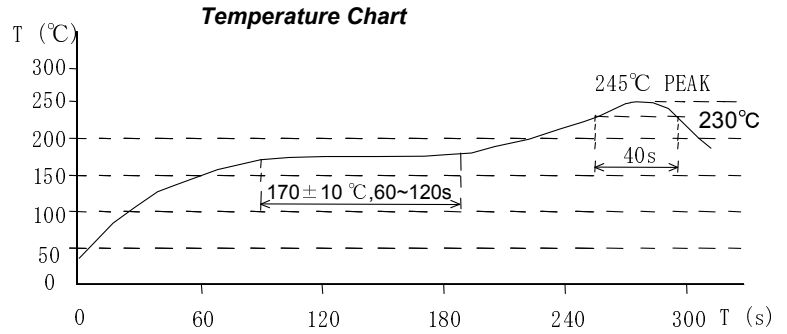
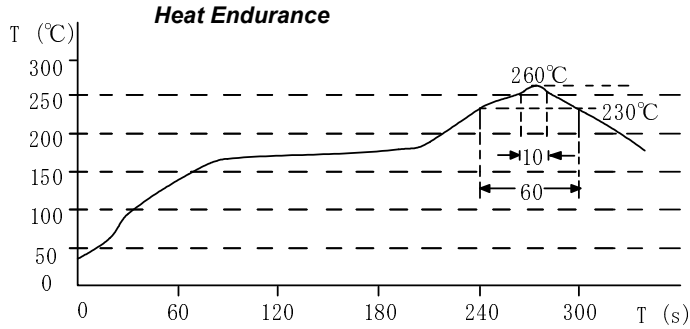
— L (20°C) — L (105°C) —  $\Delta T$



# SMD Power Inductor CDH5D16



## Solder Reflow Condition



Please refer to the sales offices on our website - <http://www.sumida.com>

### Hong Kong

Tel.+852-2880-6688  
FAX.+852-2565-9600  
[sales@hk.sumida.com](mailto:sales@hk.sumida.com)

### Tokyo

Tel.+81-3-5202-7112  
FAX.+81-3-5202-7105  
[sales@jp.sumida.com](mailto:sales@jp.sumida.com)

### Chicago

Tel.+1-847-545-6700  
FAX. +1-847-545-6720  
[sales@us.sumida.com](mailto:sales@us.sumida.com)

### Shanghai

Tel.+86-021-5836-3299  
FAX.+86-021-5836-3266  
[shanghai.sales@cn.sumida.com](mailto:shanghai.sales@cn.sumida.com)

### Seoul

Tel.+82-2-6237-0777  
FAX.+82-2-6237-0778  
[sales@kr.sumida.com](mailto:sales@kr.sumida.com)

### Obernzell

Tel.+49-8591-937-0  
FAX. +49-8591-937-103  
[contact@sumida-eu.com](mailto:contact@sumida-eu.com)

### Shenzhen

Tel.+86-755-8291-0228  
FAX.+86-755-8291-0338  
[shenzhen.sales@cn.sumida.com](mailto:shenzhen.sales@cn.sumida.com)

### Singapore

Tel.+65-6296-3388  
FAX.+65-6296-3390  
[sales@sg.sumida.com](mailto:sales@sg.sumida.com)

### Neumarkt

Tel.+49-9181-4509-110  
FAX. +49-9181-4509-310  
[infocomp@eu.sumida.com](mailto:infocomp@eu.sumida.com)

### Taipei

Tel.+886-2-8751-2737  
FAX.+886-2-8751-2738  
[sales@tw.sumida.com](mailto:sales@tw.sumida.com)

### San Jose

Tel.+1-408-3219660  
FAX.+1-408-321-9308  
[sales@us.sumida.com](mailto:sales@us.sumida.com)