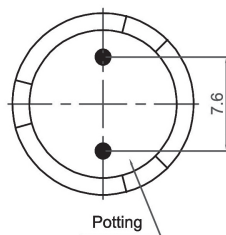
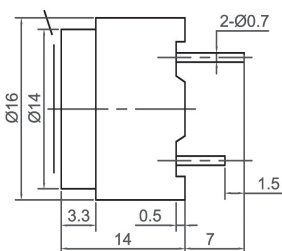
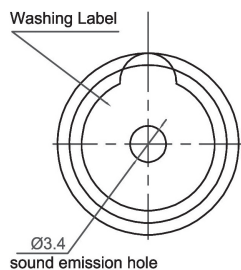
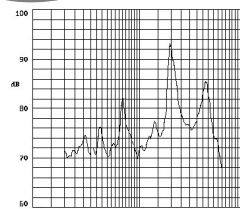


# Magnetic Transducer (AC)



**CMT1614-T**

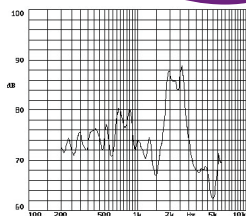
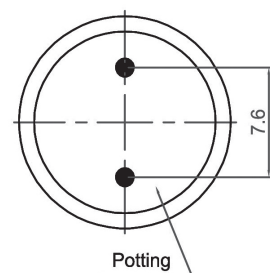
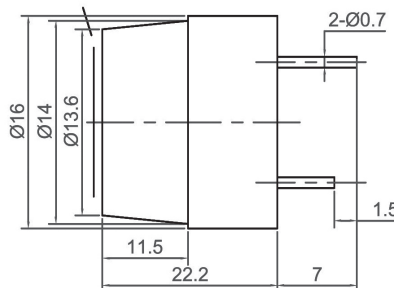
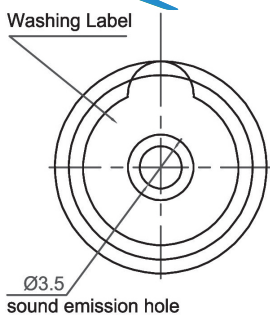
Canopus Part no.	Operating Voltage (V)	Rated Voltage (V)	Max Rated Current (mA)	Coil Resistance ( $\Omega$ )	Min Sound Output (dBA)	Resonant Frequency (Hz)	Operating Temperature ( $^{\circ}$ C)	Housing	Weight (g)
CMT1614A2048NPT	1 ~ 2	1.5	18	27 $\pm$ 3	80 at 10cm	2048	-25 ~ +75	Noryl	7
CMT1614F2048NPT	3 ~ 12	6	40	50 $\pm$ 6	85 at 10cm	2048	-25 ~ +70	Noryl	7
CMT1614H2048NPT	6 ~ 18	12	40	115 $\pm$ 12	85 at 10cm	2048	-25 ~ +70	Noryl	7



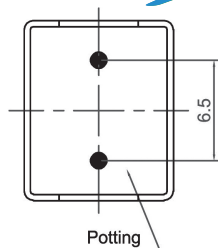
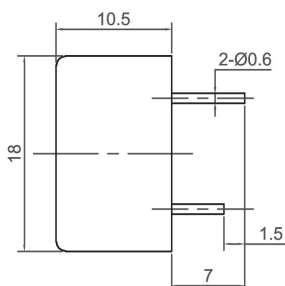
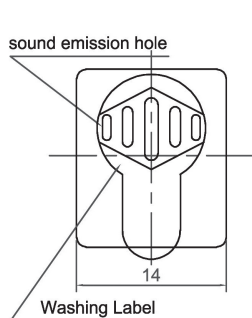
**CANOPUS**



**CMT1622**

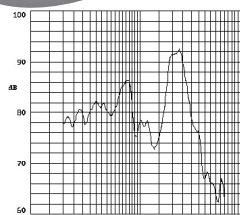


Canopus Part no.	Operating Voltage (V)	Rated Voltage (V)	Max Rated Current (mA)	Coil Resistance ( $\Omega$ )	Min Sound Output (dBA)	Resonant Frequency (Hz)	Operating Temperature ( $^{\circ}$ C)	Housing	Weight (g)
CMT1622A2048NP	1 ~ 3	1.5	18	27 $\pm$ 3	80 at 10cm	2048	-20 ~ +70	Noryl	5



**CMT1810**

Canopus Part no.	Operating Voltage (V)	Rated Voltage (V)	Max Rated Current (mA)	Coil Resistance ( $\Omega$ )	Min Sound Output (dBA)	Resonant Frequency (Hz)	Operating Temperature ( $^{\circ}$ C)	Housing	Weight (g)
CMT1810A2048NPR	1 ~ 2	1.5	40	14 $\pm$ 9	80 at 10cm	2000~2500	-20 ~ +70	Noryl	7
CMT1810F2048NPR	3 ~ 10	6	40	60 $\pm$ 9	90 at 10cm	2000~2500	-30 ~ +85	Noryl	7
CMT1810H2048NPR	6 ~ 15	12	40	120 $\pm$ 18	85 at 10cm	2000~2500	-30 ~ +85	Noryl	7



**Your Efficient Supplier**  
[www.canopus.com.hk](http://www.canopus.com.hk)

TEL.: (852) 2806 2812

Fax: (852) 2652 2216