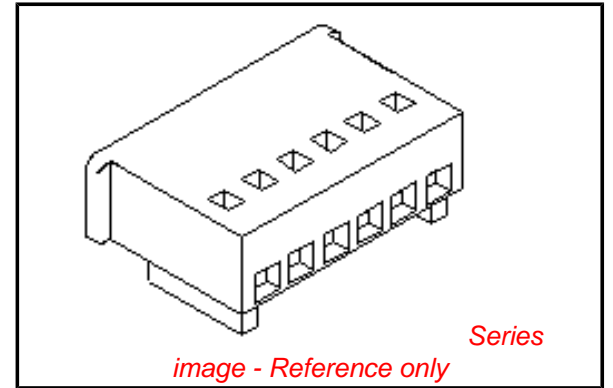


**PLEASE CHECK WWW.MOLEX.COM FOR LATEST PART INFORMATION**

**Part Number:** [0022011044](#)  
**Status:** **Active**  
**Overview:** [spox](#)  
**Description:** 2.50mm (.098") Pitch SPOX™ Wire-to-Wire and Wire-to-Board Receptacle Housing, 4 Circuits

**Documents:**

|   |   |
|---|---|
| <a href="#">3D Model</a>                                | <a href="#">Product Specification PS-5102-002 (PDF)</a> |
| <a href="#">Drawing (PDF)</a>                           | <a href="#">Product Specification PS-5102-004 (PDF)</a> |
| <a href="#">Product Specification PS-5045-001 (PDF)</a> | <a href="#">RoHS Certificate of Compliance (PDF)</a>    |
| <a href="#">Product Specification PS-5045-002 (PDF)</a> |   |



**Agency Certification**

|     |           |
|-----|-----------|
| CSA | LR19980   |
| TUV | R72090224 |
| UL  | E29179    |

**General**

|                |                      |
|----------------|----------------------|
| Product Family | Crimp Housings       |
| Series         | <a href="#">5102</a> |
| Overview       | <a href="#">spox</a> |
| Product Name   | SPOX™                |

**Physical**

|                               |                 |
|-------------------------------|-----------------|
| Circuits (maximum)            | 4               |
| Color - Resin                 | Natural         |
| Flammability                  | 94V-0           |
| Gender                        | Female          |
| Glow-Wire Compliant           | No              |
| Lock to Mating Part           | Yes             |
| Material - Resin              | Nylon           |
| Number of Rows                | 1               |
| Packaging Type                | Bag             |
| Panel Mount                   | No              |
| Pitch - Mating Interface (in) | 0.098 In        |
| Pitch - Mating Interface (mm) | 2.50 mm         |
| Polarized to Mating Part      | Yes             |
| Stackable                     | No              |
| Temperature Range - Operating | -40°C to +105°C |

**Material Info**

|                 |         |
|-----------------|---------|
| Old Part Number | 5102-04 |
|-----------------|---------|

**Reference - Drawing Numbers**

|                       |  |
|-----------------------|--|
| Product Specification | PS-5045-001, PS-5045-002, PS-5102-002, PS-5102-004 |
| Sales Drawing         | SD-5102-001  |

**EU RoHS**

**ELV and RoHS Compliant**  
**REACH SVHC Contains SVHC: No**  
**Halogen-Free Status**

**China RoHS**



**Need more information on product environmental compliance?**

Email [productcompliance@molex.com](mailto:productcompliance@molex.com)  
 For a multiple part number RoHS Certificate of Compliance, [click here](#)

Please visit the [Contact Us](#) section for any non-product compliance questions.

**Search Parts in this Series**

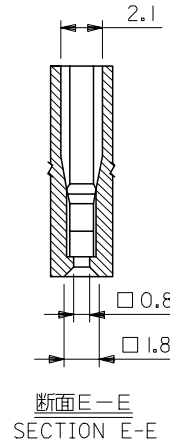
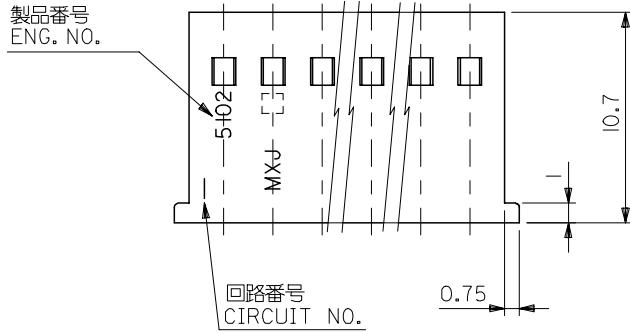
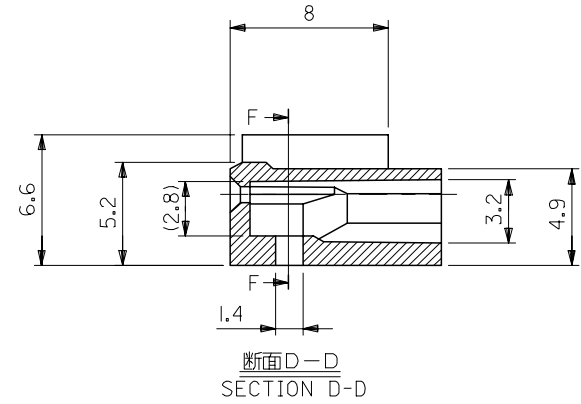
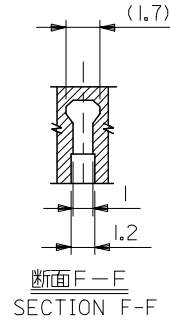
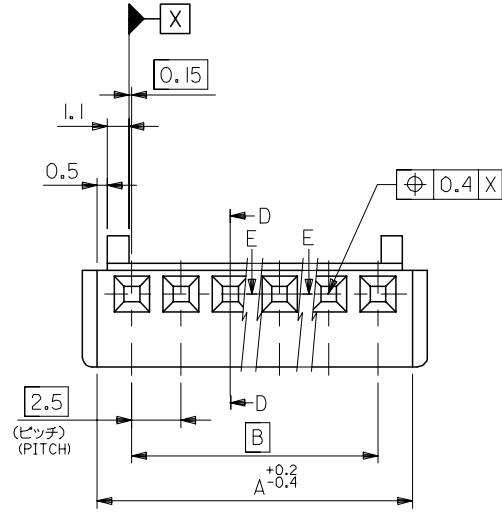
[5102Series](#)

**Mates With**

[5045](#) Vertical Header, [5046](#) Right Angle Header

**Use With**

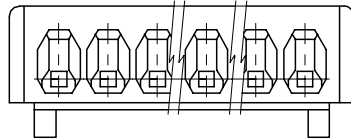
[5103](#) Crimp Terminals



|      |      |            |          |              |
|------|------|------------|----------|--------------|
| 47.5 | 51   | 22-01-1204 | 5102-20  | 20           |
| 45   | 48.5 | ▲ -1194    | ▲ -19    | 19           |
| 42.5 | 46   | -1184      | -18      | 18           |
| 40   | 43.5 | -1174      | -17      | 17           |
| 37.5 | 41   | -1164      | -16      | 16           |
| 35   | 38.5 | -1154      | -15      | 15           |
| 32.5 | 36   | -1144      | -14      | 14           |
| 30   | 33.5 | -1134      | -13      | 13           |
| 27.5 | 31   | -1124      | -12      | 12           |
| 25   | 28.5 | -1114      | -11      | 11           |
| 22.5 | 26   | -1104      | -10      | 10           |
| 20   | 23.5 | -1094      | -09      | 9            |
| 17.5 | 21   | -1084      | -08      | 8            |
| 15   | 18.5 | -1074      | -07      | 7            |
| 12.5 | 16   | -1064      | -06      | 6            |
| 10   | 13.5 | -1054      | -05      | 5            |
| 7.5  | 11   | -1044      | -04      | 4            |
| 5    | 8.5  | ▼ -1034    | ▼ -03    | 3            |
| 2.5  | 6    | 22-01-1024 | 5102-02  | 2            |
| B    | A    | EDP. NO.   | ENG. NO. | NO. OF EXTS. |

注記  
NOTE

使用ターミナル: ENG. NO. 5103\*  
APPLICABLE TERMINAL: ENG. NO. 5103\*



材料  
MATERIAL  
ナイロン66, UL94V-0  
NYLON66, UL94V-0

|   |  |       |                            |            |                    |                        |                        |  |             |           |
|---|--|-------|----------------------------|------------|--------------------|------------------------|------------------------|--|-------------|-----------|
| REVISED<br>EC NO: J2006-3417<br>DR: W.K. SAITO 2006/07/31<br>CHK: D. TANAKA 2006/08/04<br>APPR: N. UKITA 2006/08/07           | GENERAL TOLERANCES (UNLESS SPECIFIED)                |       | DIMENSION STYLE<br>MM ONLY |            | SCALE<br>4:1       | DESIGN UNITS<br>METRIC | THIRD ANGLE PROJECTION |  |             |           |
|   | 10 UNDER   | ±0.2  | DRAWN BY<br>H. IJIMA       |            | DATE<br>1996/07/05 |                        | TITLE<br>MINI SPOX HSG |  |             |           |
|   | 10 OVER 30 UNDER                                     | ±0.25 | CHECKED BY<br>M. FUKUSHIMA |            | DATE<br>1996/07/05 |                        |                        |  |             |           |
|   | 30 OVER  | ±0.3  | APPROVED BY<br>M. ENOMOTO  |            | DATE<br>1996/07/05 |                        | MOLEX INCORPORATED     |  |             |           |
|   | ANGULAR  | ±3 °  | MATERIAL NO.               |            | DOCUMENT NO.       |                        |                        |  |             | SHEET NO. |
|   | DRAFT WHERE APPLICABLE MUST REMAIN WITHIN DIMENSIONS |       |                            | SIZE<br>A3 |                    | SEE CHART              |                        |  | SD-5102-001 |           |
| THIS DRAWING CONTAINS INFORMATION THAT IS PROPRIETARY TO MOLEX INCORPORATED AND SHOULD NOT BE USED WITHOUT WRITTEN PERMISSION |  |       |                            |            |                    |                        |                        |  |             |           |