

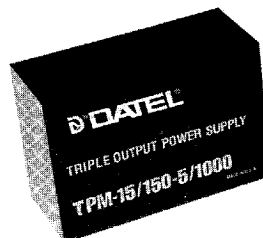
Line Operated Triple Output Power Modules



T-57-05

FEATURES

- Operated from line voltage (115 VAC $\pm 10\%$, 60-440 Hz)
- Fully regulated
- High accuracy ($\pm 1\%$)
- Current limiting short circuit protection
- Isolated to 1500 VAC
- Delivery from stock



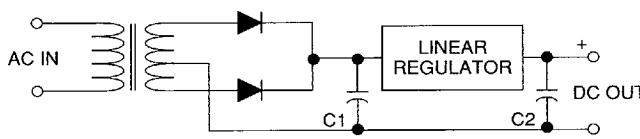
GENERAL DESCRIPTION

The TPM Series of line operated triple output power modules are high performance dc supplies capable of providing a fully regulated output of $\pm 12/5V$ and $\pm 15V/5V$ from 115VAC ($\pm 10\%$) line power. Their compact size (3.5" x 2.5"), modular design, and ability to be socketed (socket # MS-13) make them ideal for PC board mount applications.

AC input-to-dc output isolation is rated at 1500 VRMS with isolation resistance of 100 Megohms. Multiple output ratings from four different supplies allows you to match your application with the supply that fits rather than settling for an "almost right" choice. Temperature coefficients of 0.02% per $^{\circ}C$ (maximum) combined with an operating temperature range

of $-25^{\circ}C$ to $+71^{\circ}C$ means accurate, trouble-free operation over prolonged periods. Also, every TPM Series power module has #4-40 x 0.15" deep threaded inserts (2 each) for easy heat sink mounting or for mounting the supply to a variety of surfaces. The TPM Series has excellent output voltage regulation with output ripple limited to 2 mV/1 mV (bipolar/5V). Transient recovery time is 50 μ Sec (maximum) with current limiting short circuit protection to ensure safe operation for your other circuits.

Case material is phenolic and packaging/pinout is compatible with most other industry standard AC to dc supplies making them ideal as the first or second source drop-in.



APPLICATIONS

- Telecommunications Equipment
- Local Power Distribution Systems
- PC Board Subsystems
- Bench Top Instrumentation
- Process Instrumentation
- Laboratory Equipment
- Computer Controlled Equipment

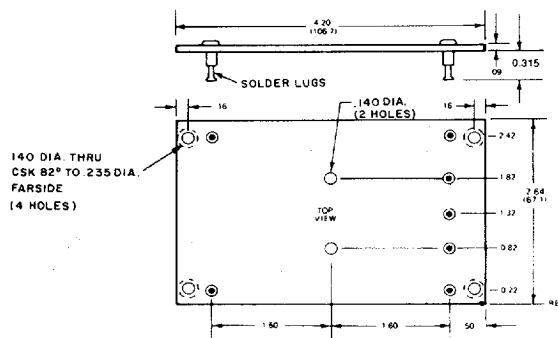
SPECIFICATIONS

	TRIPLE OUTPUT MODELS			
	TPM-12/100—5/500	TPM-12/150—5/1000	TPM-15/100—5/500	TPM-15/150—5/1000
Output Voltage	± 12/5	± 12/5	± 15/5	± 15/5
Output Current	100 mA/500 mA	150 mA/1000 mA	100 mA/500 mA	150 mA/1000 mA
Line Regulation	0.02%/0.05%	0.02%/0.05%	0.02%/0.05%	0.02%/0.05%
Load Regulation	0.05%/0.01%	0.05%/0.01%	0.05%/0.01%	0.05%/0.01%
Output Accuracy	± 1	± 1	± 1	± 1
Output Impedance (Ohms)	0.1	0.1	0.1	0.1
Case Size	E3	E3	E3	E3

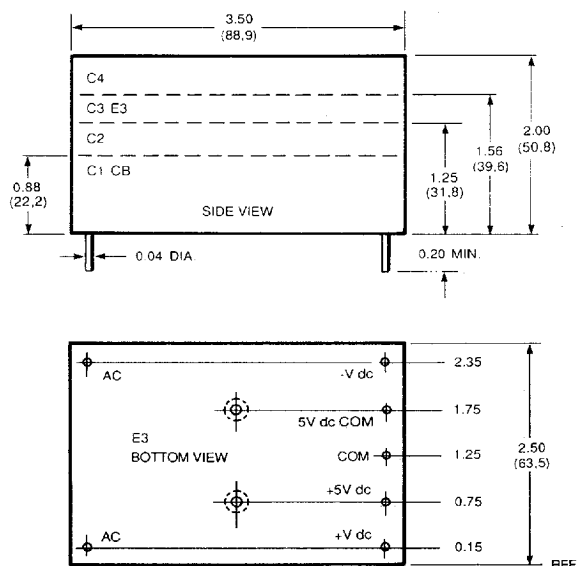
GENERAL SPECIFICATIONS (at 25 °C)

Voltage Input	103.5 to 126.5 VAC
Temperature Coefficient	60 to 440 Hz
Output Ripple	0.02% per °C
Output Ripple	0.02% per °C
(5V Output)	1 mV RM
(±12V or ±15V)	2 mV RMS
Transient Recovery Time, maximum	50 µSec
Isolation Resistance, minimum	100 Megohms
Isolation Capacitance, maximum	250 pF
Breakdown Voltage, minimum	1500 VAC
Operating Temperature	-25 °C to +71 °C
(No Derating)	
Storage Temperature	-25 °C to +85 °C
Case Material	Phenolic
Module Size	3.5" x 2.5" x 1.56"
(88.9 x 63.5 x 39.6)	
Module Weight	24 ounces (681 grams)

SOCKET MS-13



MECHANICAL DIMENSIONS AND I/O CONNECTIONS



For Immediate Assistance, Dial 1-800-233-2765

49