

Component General, Inc.

Stripline Base Mounted Terminations

MECHANICAL SPECIFICATIONS



Heat Sink : Copper, Nickel Plated per QQ-N-290.

Substrate : Beryllium Oxide Ceramic.

Contact : Beryllium Copper, Gold Plated per MIL-G-45204.

Thickness : .004" \pm .002".

Cover : Alumina Ceramic.

Tolerance : \pm .010" unless specified

1 hole base mounted terminations product selection chart

CGI P/N	Power	Resistance (Ohms)	Standard Tolerance	Frequency Range	VSWR (Max.)
Note: Click a part number from the list below to see a data sheet for that part.					
CBT-10-1	10 W	50	5 %	DC - 4.0 GHz	1:35:1 1:35:1
CBT-10-2	10 W	50	5 %	DC - 4.0 GHz	1:35:1
CBT-10-3	10 W	50	5 %	DC - 8.0 GHz	1:25:1
CBT-10-4	10 W	50	5 %	DC - 8.0 GHz	1:25:1
CBT-20-1	20 W	50	2 %	DC - 1.0 GHz 1.0 - 2.0 GHz	1:20:1 1:35:1
CBT-20-2	20 W	50	2 %	DC - 1.0 GHz 1.0 - 2.0 GHz	1:20:1 1:35:1
CBT-20-3	20 W	50	2 %	DC - 1.0 GHz 1.0 - 2.0 GHz	1:20:1 1:35:1
CBT-20-4	20 W	50	2 %	DC - 1.0 GHz 1.0 - 2.0 GHz	1:20:1 1:35:1
CBT-20-5	20 W	50	2 %	DC - 1.0 GHz 1.0 - 2.0 GHz	1:20:1 1:35:1
CBT-20-6	20 W	50	2 %	DC - 4.0 GHz	1:25:1
CBT-20-7	20 W	50	2 %	DC - 4.0 GHz	1:25:1
CBT-20-8	20 W	50	2 %	DC - 4.0 GHz	1:25:1
CBT-50-1	50 W	50	5 %	DC - .5 GHz .5 - 1.0 GHz	1:20:1 1:35:1
CBT-50-2	50 W	50	5 %	DC - .5 GHz .5 - 1.0 GHz	1:20:1 1:35:1

Component General, Inc.

■ Stripline Base Mounted Terminations

■ MECHANICAL SPECIFICATIONS



Heat Sink : Copper, Nickel Plated per QQ-N-290.

Substrate : Beryllium Oxide Ceramic.

Contact : Beryllium Copper, Gold Plated per MIL-G-45204.

Thickness : .004" \pm .002".

Cover : Alumina Ceramic.

Tolerance : \pm .010" unless specified

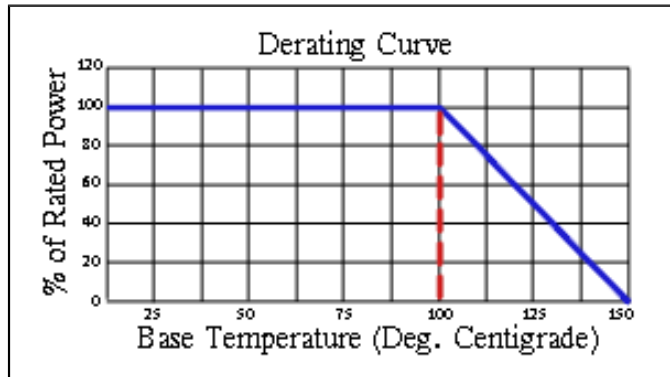
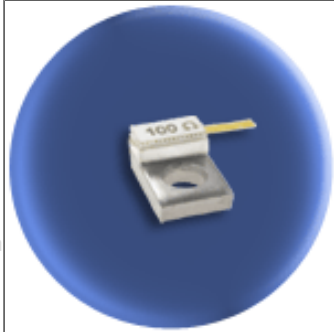
1 hole base mounted terminations product selection chart

CGI P/N	Power	Resistance (Ohms)	Standard Tolerance	Frequency Range	VSWR (Max.)
Note: Click a part number from the list below to see a data sheet for that part.					
CBT-50-3	50 W	50	5 %	DC - .5 GHz .5 - 1.0 GHz	1:20:1 1:35.1
CBT-50-4	50 W	50	5 %	DC - .5 GHz .5 - 1.0 GHz	1:20:1 1:35.1
CBT-50-5	50 W	50	5 %	DC - .5 GHz .5 - 1.0 GHz	1:20:1 1:35.1
CBT-50-6	50 W	50	5 %	DC - .5 GHz .5 - 1.0 GHz	1:20:1 1:35.1
CBT-50-7	50 W	50	5 %	DC - 6.0 GHz	1:25:1
CBT-50-8	50 W	50	5 %	DC - 6.0 GHz	1:25:1
CBT-50-9	50 W	50	5 %	DC - 6.0 GHz	1:25:1
CBT-50-10	50 W	50	5 %	DC - 6.0 GHz	1:25:1
CBT-50-11	50 W	50	5 %	DC - 6.0 GHz	1:25:1
CBT-50-12	50 W	50	5 %	DC - 6.0 GHz	1:25:1

Component General, Inc.

P/N: CBT-10-1

Stripline Base Mounted Terminations



Mechanical Specifications

Covers:

Alumina Ceramic.

Substrate:

Beryllium Oxide Ceramic.

Contact:

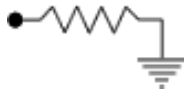
Beryllium Copper, Gold Plated per MIL-G-45204.
Length: 0.125" Min., Width: 0.040",
Thickness 0.004" \pm 0.002".

Heat Sink:

Copper, Nickel Plated per QQ-N-290.

Tolerance:

\pm 0.010" unless specified.



Note: The use of thermal mounting compound is recommended.

Electrical Specifications

Resistance Value:

10 - 1000 Ω or as required. Other values available upon request.

Frequency Range:

DC - 4.0 GHz

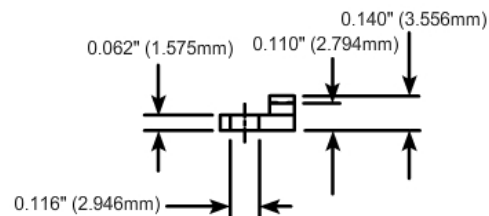
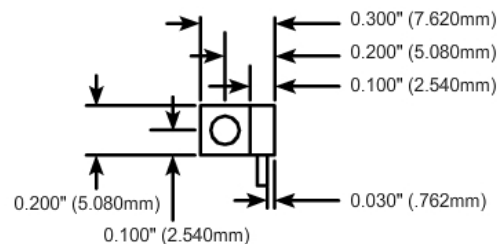
VSWR (Max.):

1.35:1

Standard Resistance Tolerance:

\pm 5% Other tolerances available upon request.

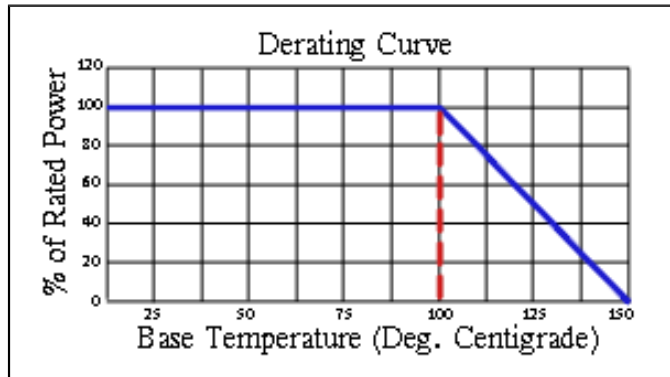
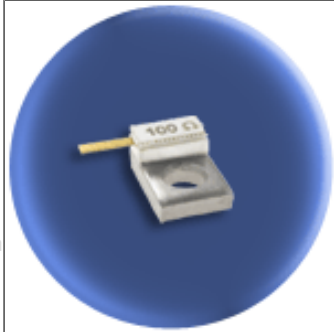
Part Dimensions



Component General, Inc.

P/N: CBT-10-2

Stripline Base Mounted Terminations



Mechanical Specifications

Covers:

Alumina Ceramic.

Substrate:

Beryllium Oxide Ceramic.

Contact:

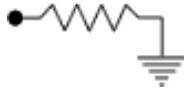
Beryllium Copper, Gold Plated per MIL-G-45204.
Length: 0.125" Min., Width: 0.040",
Thickness 0.004" \pm 0.002".

Heat Sink:

Copper, Nickel Plated per QQ-N-290.

Tolerance:

\pm 0.010" unless specified.



Note: The use of thermal mounting compound is recommended.

Electrical Specifications

Resistance Value:

10 - 1000 Ω or as required. Other values available upon request.

Frequency Range:

DC - 4.0 GHz

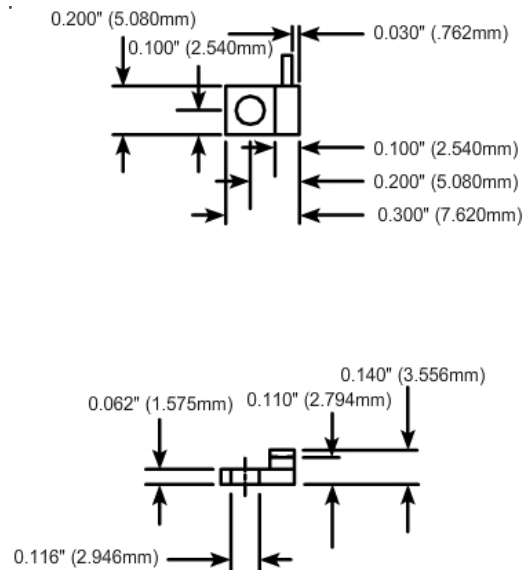
VSWR (Max.):

1.35:1

Standard Resistance Tolerance:

\pm 5% Other tolerances available upon request.

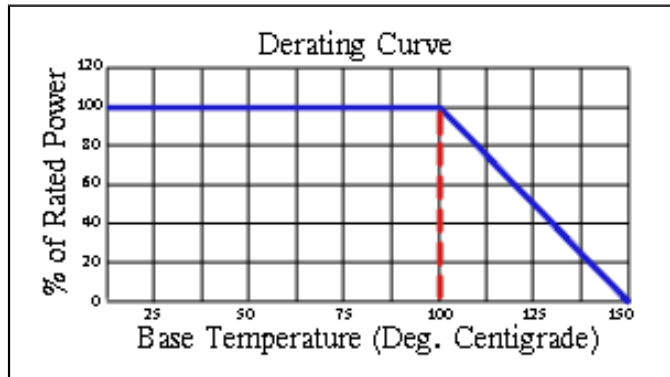
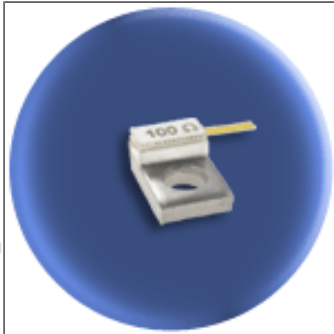
Part Dimensions



Component General, Inc.

P/N: CBT-10-3

Stripline Base Mounted Terminations



Mechanical Specifications

Covers:

Alumina Ceramic.

Substrate:

Beryllium Oxide Ceramic.

Contact:

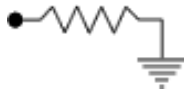
Beryllium Copper, Gold Plated per MIL-G-45204.
Length: 0.125" Min., Width: 0.040",
Thickness 0.004" \pm 0.002".

Heat Sink:

Copper, Nickel Plated per QQ-N-290.

Tolerance:

\pm 0.010" unless specified.



Note: The use of thermal mounting compound is recommended.

Electrical Specifications

Resistance Value:

10 - 1000 Ω or as required. Other values available upon request.

Frequency Range:

DC - 8.0 GHz

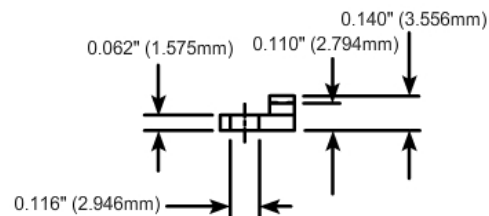
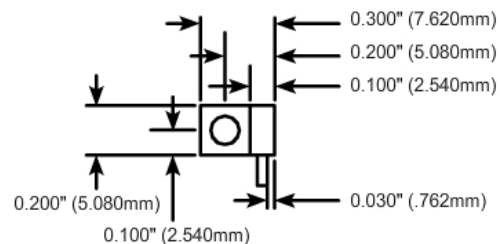
VSWR (Max.):

1.25:1

Standard Resistance Tolerance:

\pm 5% Other tolerances available upon request.

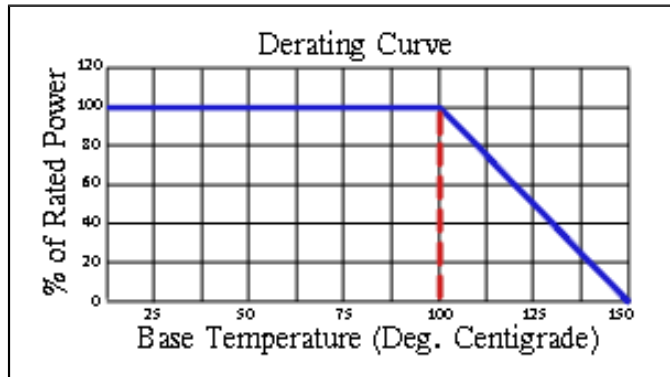
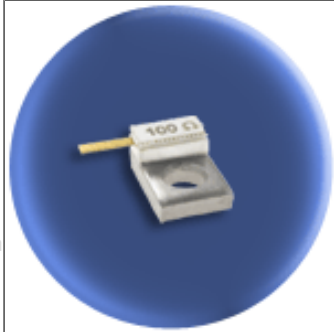
Part Dimensions



Component General, Inc.

P/N: CBT-10-4

Stripline Base Mounted Terminations



Mechanical Specifications

Covers:

Alumina Ceramic.

Substrate:

Beryllium Oxide Ceramic.

Contact:

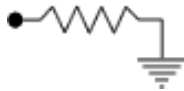
Beryllium Copper, Gold Plated per MIL-G-45204.
Length: 0.125" Min., Width: 0.040",
Thickness 0.004" ± 0.002".

Heat Sink:

Copper, Nickel Plated per QQ-N-290.

Tolerance:

± 0.010" unless specified.



Note: The use of thermal mounting compound is recommended.

Electrical Specifications

Resistance Value:

10 - 1000 Ω or as required. Other values available upon request.

Frequency Range:

DC - 8.0 GHz

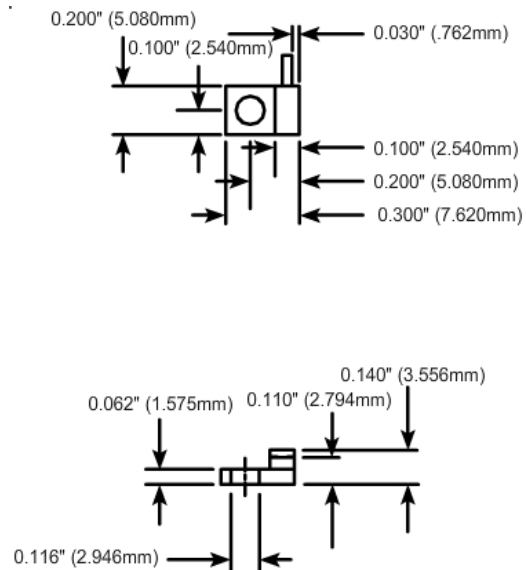
VSWR (Max.):

1.25:1

Standard Resistance Tolerance:

± 5% Other tolerances available upon request.

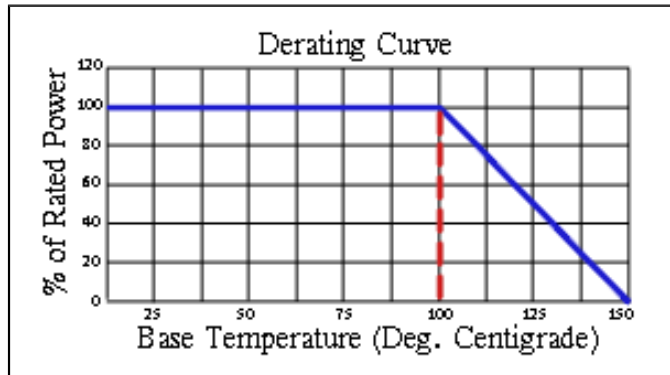
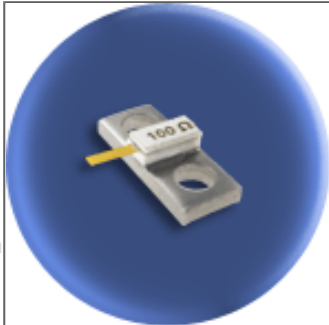
Part Dimensions



Component General, Inc.

P/N: CBT-10-5

Stripline Base Mounted Terminations



Mechanical Specifications

Covers:

Alumina Ceramic.

Substrate:

Beryllium Oxide Ceramic.

Contact:

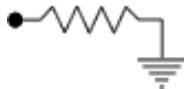
Beryllium Copper, Gold Plated per MIL-G-45204.
Length: 0.125" Min., Width: 0.040",
Thickness 0.004" \pm 0.002".

Heat Sink:

Copper, Nickel Plated per QQ-N-290.

Tolerance:

\pm 0.010" unless specified.



Note: The use of thermal mounting compound is recommended.

Electrical Specifications

Resistance Value:

10 - 1000 Ω or as required. Other values available upon request.

Frequency Range:

DC - 8.0 GHz

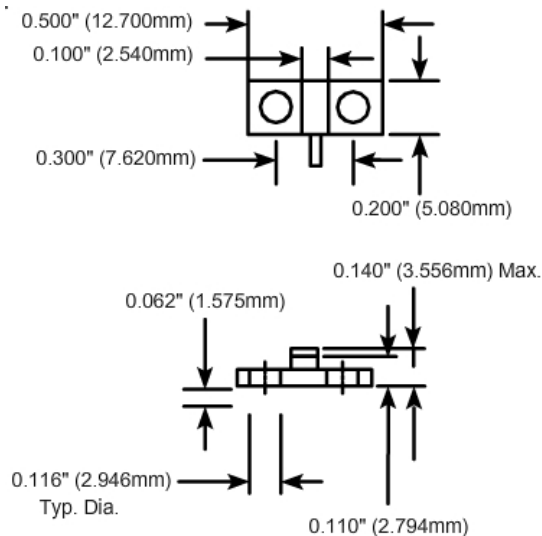
VSWR (Max.):

1.25:1

Standard Resistance Tolerance:

\pm 5% Other tolerances available upon request.

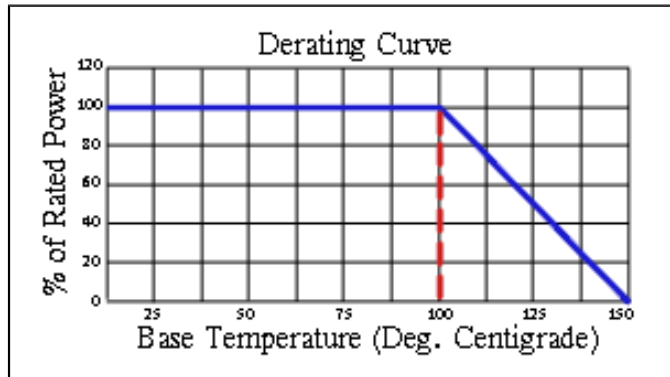
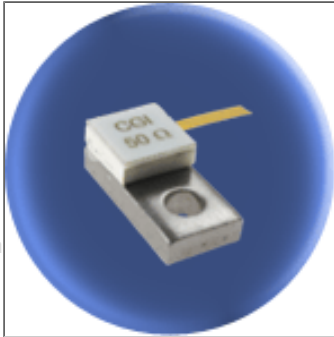
Part Dimensions



Component General, Inc.

P/N: CBT-20-1

Stripline Base Mounted Terminations



Mechanical Specifications

Covers:

Alumina Ceramic.

Substrate:

Beryllium Oxide Ceramic.

Contact:

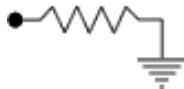
Beryllium Copper, Gold Plated per MIL-G-45204.
Length: 0.250" Min., Width: 0.060",
Thickness 0.004" ± 0.002".

Heat Sink:

Copper, Nickel Plated per QQ-N-290.

Tolerance:

± 0.010" unless specified.



Note: The use of thermal mounting compound is recommended.

Electrical Specifications

Resistance Value:

10 - 1000 Ω or as required. Other values available upon request.

Frequency Range:

DC - 1.0 GHz
1.0 - 2.0 GHz

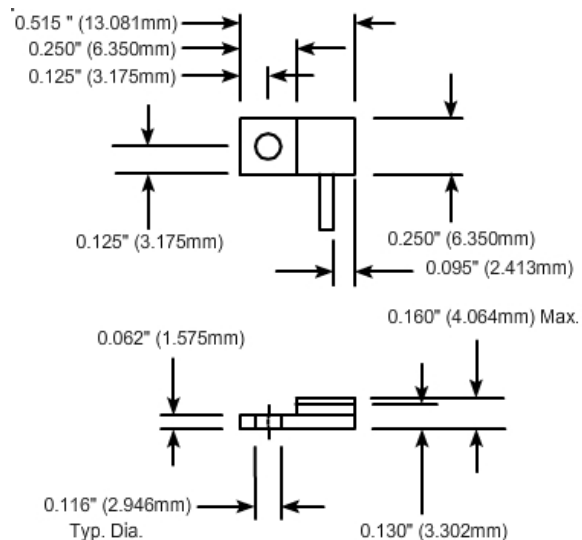
VSWR (Max.):

1.201
1.35:1

Standard Resistance Tolerance:

± 2% Other tolerances available upon request.

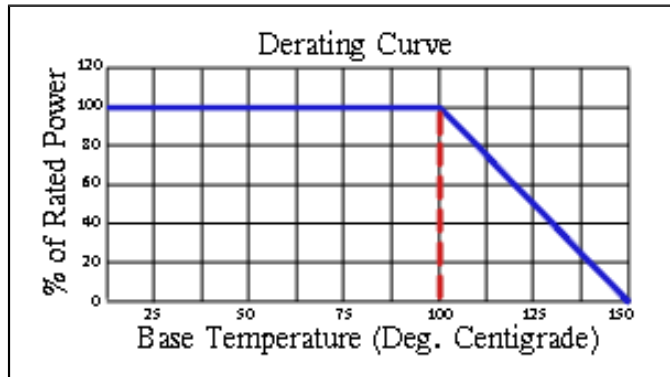
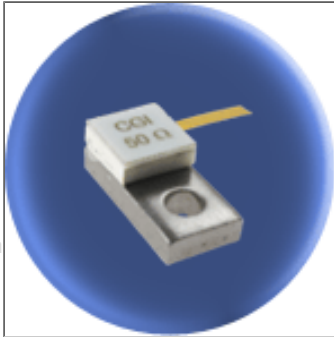
Part Dimensions



Component General, Inc.

P/N: CBT-20-2

Stripline Base Mounted Terminations



Mechanical Specifications

Covers:

Alumina Ceramic.

Substrate:

Beryllium Oxide Ceramic.

Contact:

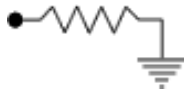
Beryllium Copper, Gold Plated per MIL-G-45204.
Length: 0.250" Min., Width: 0.060",
Thickness 0.004" \pm 0.002".

Heat Sink:

Copper, Nickel Plated per QQ-N-290.

Tolerance:

\pm 0.010" unless specified.



Note: The use of thermal mounting compound is recommended.

Electrical Specifications

Resistance Value:

10 - 1000 Ω or as
required. Other values
available upon request.

Frequency Range:

DC - 1.0 GHz
1.0 - 2.0 GHz

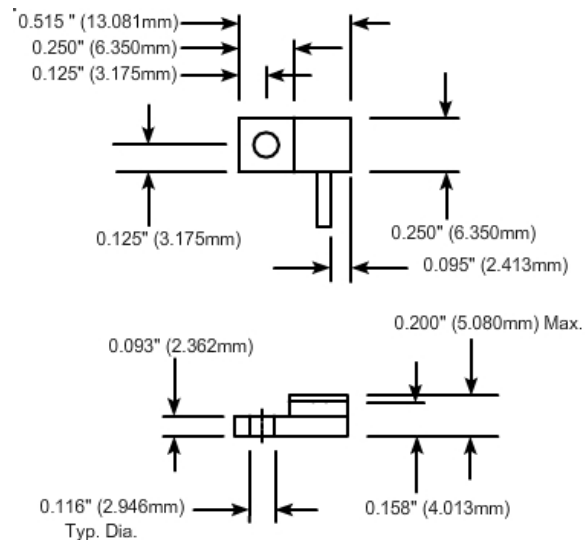
VSWR (Max.):

1.201
1.35:1

Standard Resistance Tolerance:

\pm 2% Other tolerances available upon request.

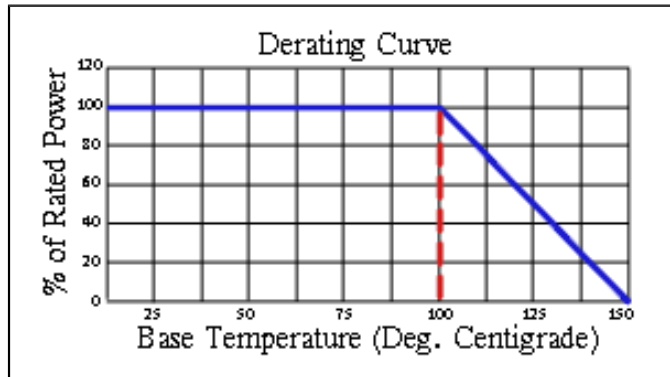
Part Dimensions



Component General, Inc.

P/N: CBT-20-3

Stripline Base Mounted Terminations



Mechanical Specifications

Covers:

Alumina Ceramic.

Substrate:

Beryllium Oxide Ceramic.

Contact:

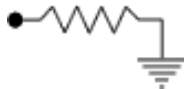
Beryllium Copper, Gold Plated per MIL-G-45204.
Length: 0.250" Min., Width: 0.060",
Thickness 0.004" ± 0.002".

Heat Sink:

Copper, Nickel Plated per QQ-N-290.

Tolerance:

± 0.010" unless specified.



Note: The use of thermal mounting compound is recommended.

Electrical Specifications

Resistance Value:

10 - 1000 Ω or as required. Other values available upon request.

Frequency Range:

DC - 1.0 GHz
1.0 - 2.0 GHz

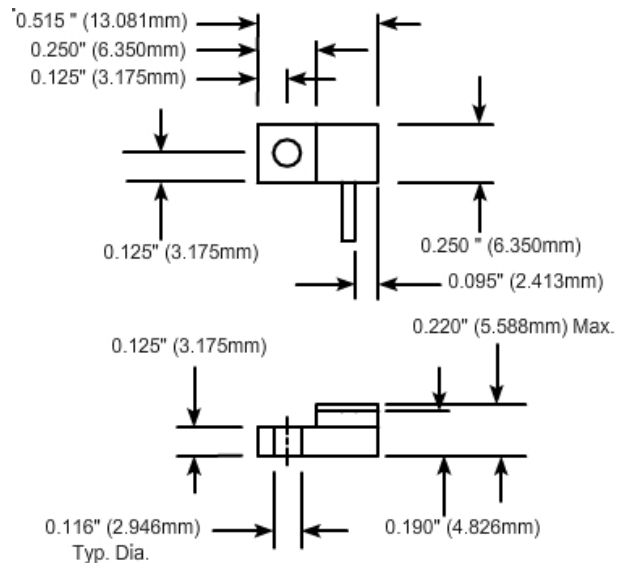
VSWR (Max.):

1.201
1.35:1

Standard Resistance Tolerance:

± 2% Other tolerances available upon request.

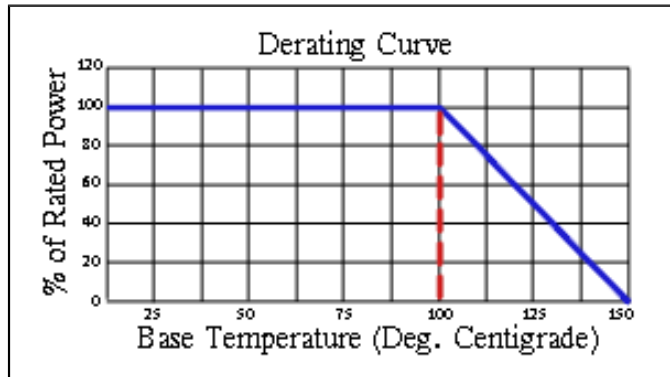
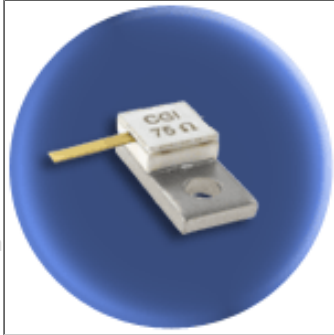
Part Dimensions



Component General, Inc.

P/N: CBT-20-4

Stripline Base Mounted Terminations



Mechanical Specifications

Covers:

Alumina Ceramic.

Substrate:

Beryllium Oxide Ceramic.

Contact:

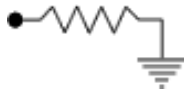
Beryllium Copper, Gold Plated per MIL-G-45204. Length: 0.250" Min., Width: 0.060", Thickness 0.004" ± 0.002".

Heat Sink:

Copper, Nickel Plated per QQ-N-290.

Tolerance:

± 0.010" unless specified.



Note: The use of thermal mounting compound is recommended.

Electrical Specifications

Resistance Value:

10 - 1000 Ω or as required. Other values available upon request.

Frequency Range:

DC - 1.0 GHz
1.0 - 2.0 GHz

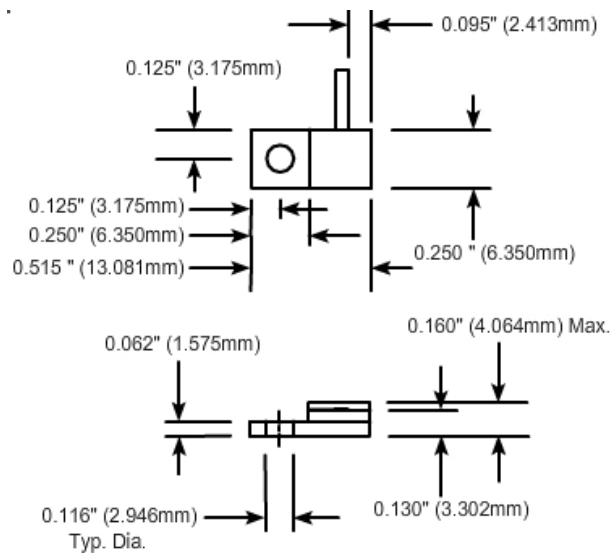
VSWR (Max.):

1.201
1.35:1

Standard Resistance Tolerance:

± 2% Other tolerances available upon request.

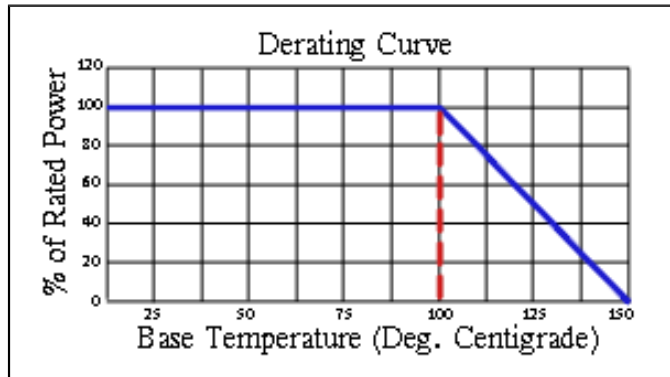
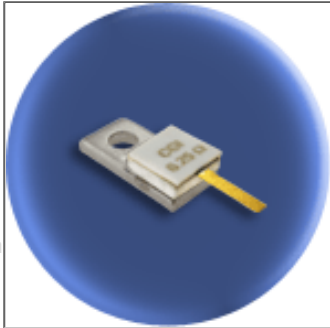
Part Dimensions



Component General, Inc.

P/N: CBT-20-5

Stripline Base Mounted Terminations



Mechanical Specifications

Covers:

Alumina Ceramic.

Substrate:

Beryllium Oxide Ceramic.

Contact:

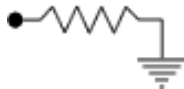
Beryllium Copper, Gold Plated per MIL-G-45204.
Length: 0.250" Min., Width: 0.060",
Thickness 0.004" ± 0.002".

Heat Sink:

Copper, Nickel Plated per QQ-N-290.

Tolerance:

± 0.010" unless specified.



Note: The use of thermal mounting compound is recommended.

Electrical Specifications

Resistance Value:

10 - 1000 Ω or as required. Other values available upon request.

Frequency Range:

DC - 1.0 GHz
1.0 - 2.0 GHz

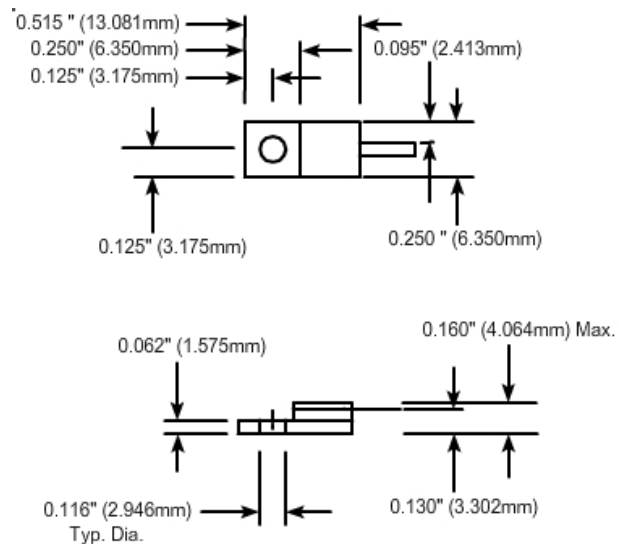
VSWR (Max.):

1.201
1.35:1

Standard Resistance Tolerance:

± 2% Other tolerances available upon request.

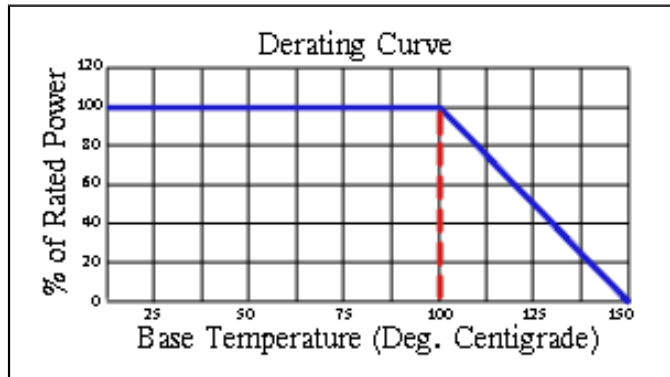
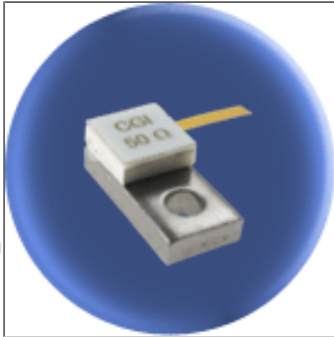
Part Dimensions



Component General, Inc.

P/N: CBT-20-6

Stripline Base Mounted Terminations



Mechanical Specifications

Covers:

Alumina Ceramic.

Substrate:

Beryllium Oxide Ceramic.

Contact:

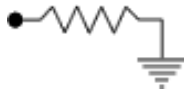
Beryllium Copper, Gold Plated per MIL-G-45204.
Length: 0.250" Min., Width: 0.060",
Thickness 0.004" ± 0.002".

Heat Sink:

Copper, Nickel Plated per QQ-N-290.

Tolerance:

± 0.010" unless specified.



Note: The use of thermal mounting compound is recommended.

Electrical Specifications

Resistance Value:

10 - 1000 Ω or as required. Other values available upon request.

Frequency Range:

DC - 4.0 GHz

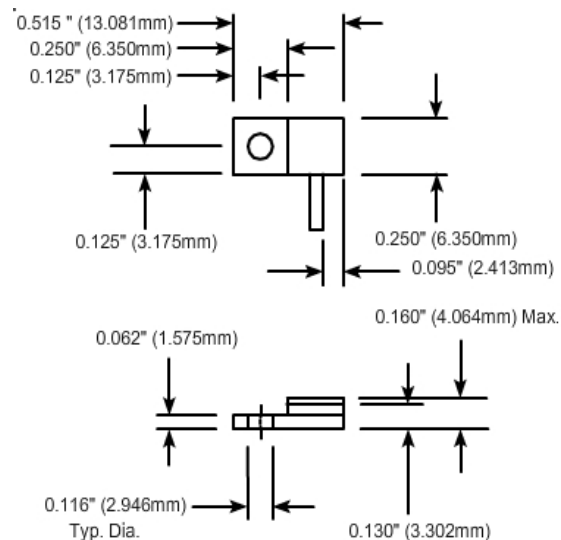
VSWR (Max.):

1.25:1

Standard Resistance Tolerance:

± 5% Other tolerances available upon request.

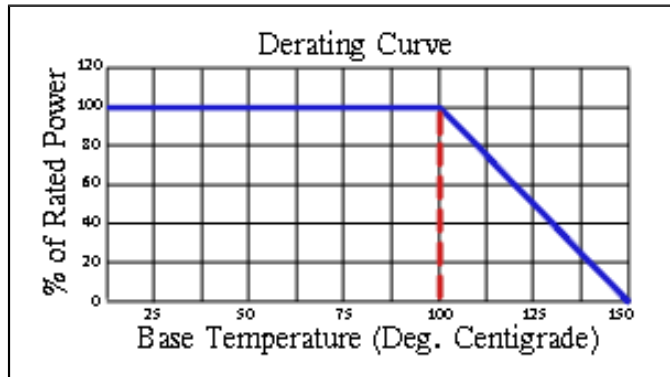
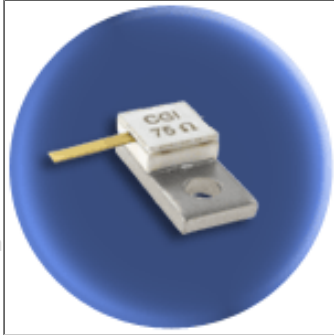
Part Dimensions



Component General, Inc.

P/N: CBT-20-7

Stripline Base Mounted Terminations



Mechanical Specifications

Covers:

Alumina Ceramic.

Substrate:

Beryllium Oxide Ceramic.

Contact:

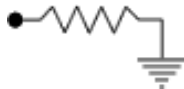
Beryllium Copper, Gold Plated per MIL-G-45204.
Length: 0.250" Min., Width: 0.060",
Thickness 0.004" ± 0.002".

Heat Sink:

Copper, Nickel Plated per QQ-N-290.

Tolerance:

± 0.010" unless specified.



Note: The use of thermal mounting compound is recommended.

Electrical Specifications

Resistance Value:

10 - 1000 Ω or as required. Other values available upon request.

Frequency Range:

DC - 4.0 GHz

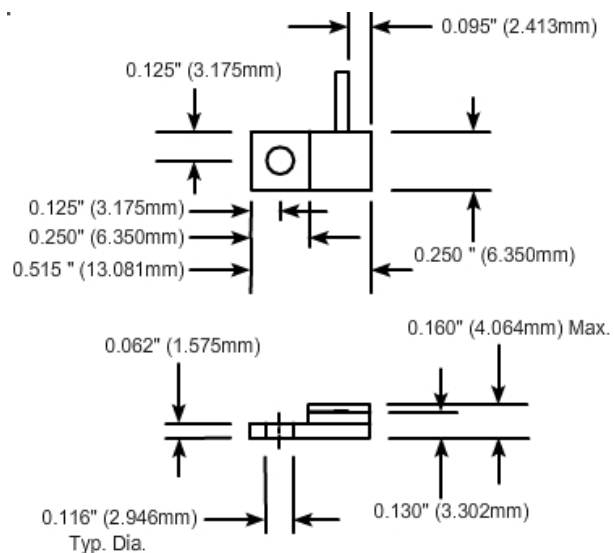
VSWR (Max.):

1.25:1

Standard Resistance Tolerance:

± 5% Other tolerances available upon request.

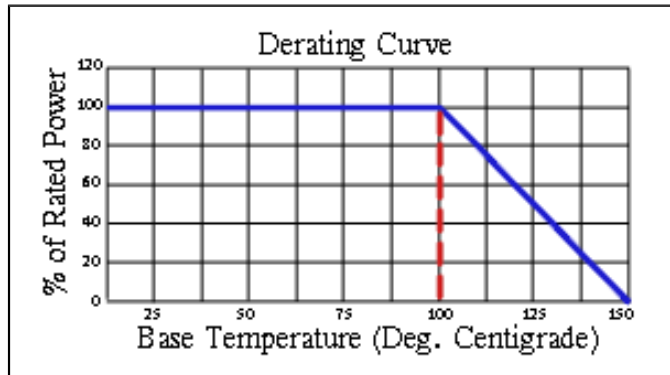
Part Dimensions



Component General, Inc.

P/N: CBT-20-8

Stripline Base Mounted Terminations



Mechanical Specifications

Covers:

Alumina Ceramic.

Substrate:

Beryllium Oxide Ceramic.

Contact:

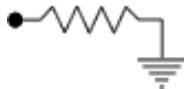
Beryllium Copper, Gold Plated per MIL-G-45204.
Length: 0.250" Min., Width: 0.060",
Thickness 0.004" ± 0.002".

Heat Sink:

Copper, Nickel Plated per QQ-N-290.

Tolerance:

± 0.010" unless specified.



Note: The use of thermal mounting compound is recommended.

Electrical Specifications

Resistance Value:

10 - 1000 Ω or as required. Other values available upon request.

Frequency Range: VSWR (Max.):

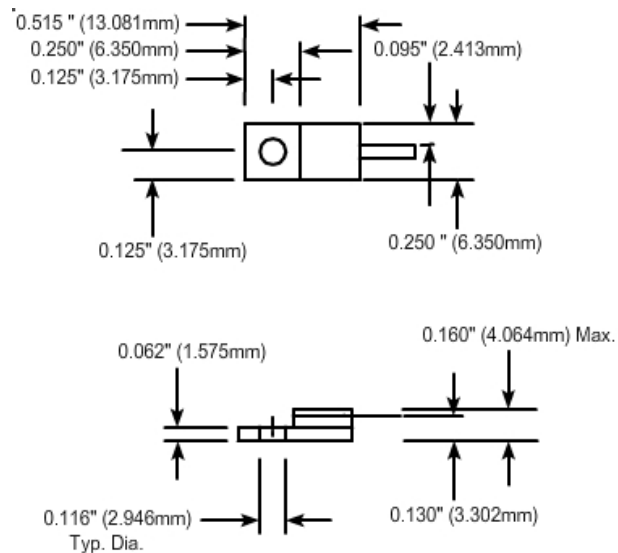
DC - 4.0 GHz

1.25:1

Standard Resistance Tolerance:

± 5% Other tolerances available upon request.

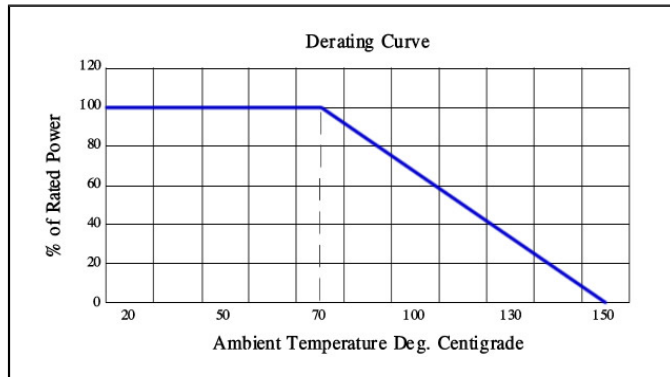
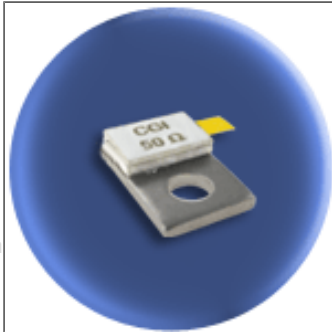
Part Dimensions



Component General, Inc.

P/N: CBT-50-1

Stripline Base Mounted Terminations



Mechanical Specifications

Covers:

Alumina Ceramic.

Substrate:

Beryllium Oxide Ceramic.

Contact:

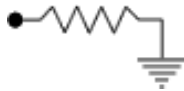
Beryllium Copper, Gold Plated per MIL-G-45204.
Length: 0.125" Min., Width: 0.120",
Thickness 0.004" ± 0.002".

Heat Sink:

Copper, Nickel Plated per QQ-N-290.

Tolerance:

± 0.010" unless specified.



Note: The use of thermal mounting compound is recommended.

Electrical Specifications

Resistance Value:

10 - 1000 Ω or as required. Other values available upon request.

Frequency Range:

DC - .5 GHz
.5 - 1.0 GHz

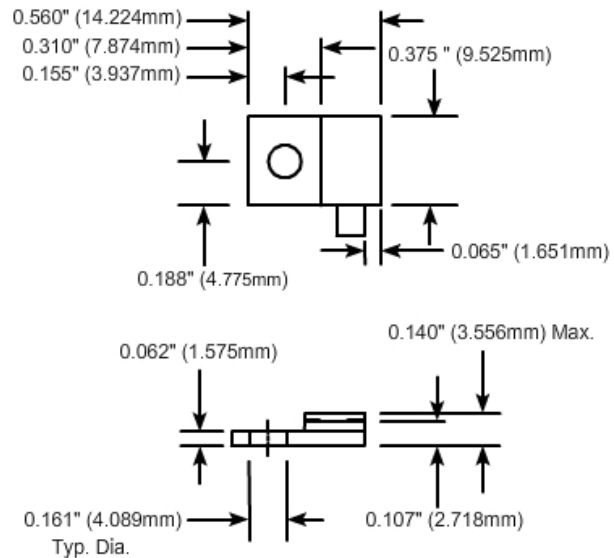
VSWR (Max.):

1.20:1
1.35:1

Standard Resistance Tolerance:

± 5% Other tolerances available upon request.

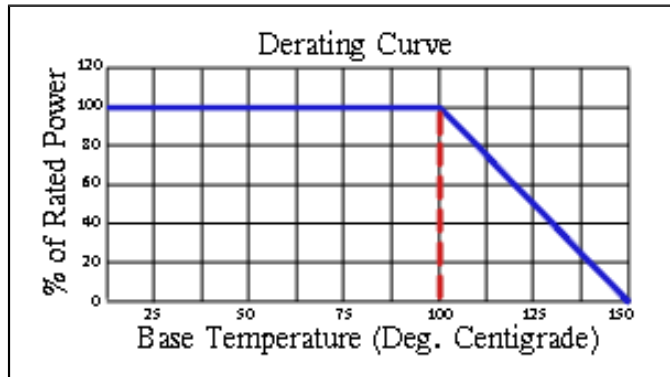
Part Dimensions



Component General, Inc.

P/N: CBT-50-2

Stripline Base Mounted Terminations



Mechanical Specifications

Covers:

Alumina Ceramic.

Substrate:

Beryllium Oxide Ceramic.

Contact:

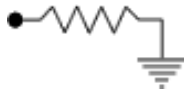
Beryllium Copper, Gold Plated per MIL-G-45204.
Length: 0.125" Min., Width: 0.120",
Thickness 0.004" ± 0.002".

Heat Sink:

Copper, Nickel Plated per QQ-N-290.

Tolerance:

± 0.010" unless specified.



Note: The use of thermal mounting compound is recommended.

Electrical Specifications

Resistance Value:

10 - 1000 Ω or as required. Other values available upon request.

Frequency Range:

DC - .5 GHz
.5 - 1.0 GHz

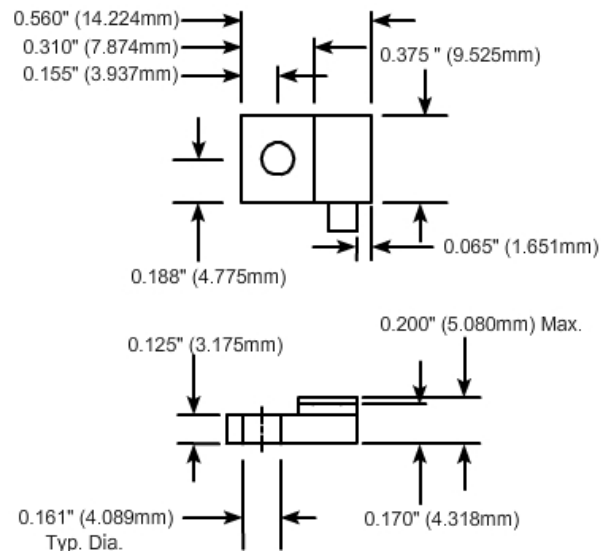
VSWR (Max.):

1.20:1
1.35:1

Standard Resistance Tolerance:

± 5% Other tolerances available upon request.

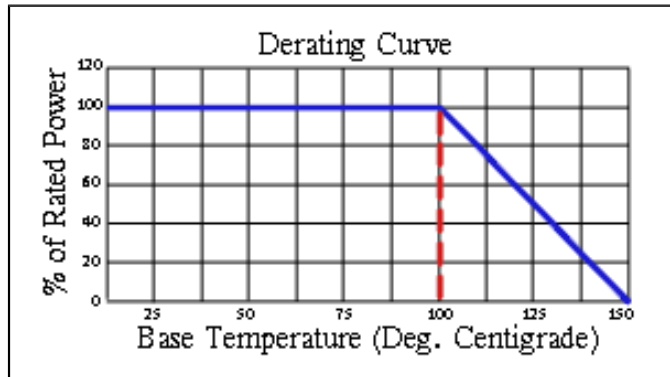
Part Dimensions



Component General, Inc.

P/N: CBT-50-3

Stripline Base Mounted Terminations



Mechanical Specifications

Covers:

Alumina Ceramic.

Substrate:

Beryllium Oxide Ceramic.

Contact:

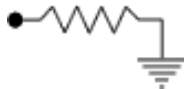
Beryllium Copper, Gold Plated per MIL-G-45204.
Length: 0.125" Min., Width: 0.120",
Thickness 0.004" ± 0.002".

Heat Sink:

Copper, Nickel Plated per QQ-N-290.

Tolerance:

± 0.010" unless specified.



Note: The use of thermal mounting compound is recommended.

Electrical Specifications

Resistance Value:

10 - 1000 Ω or as required. Other values available upon request.

Frequency Range:

DC - .5 GHz
.5 - 1.0 GHz

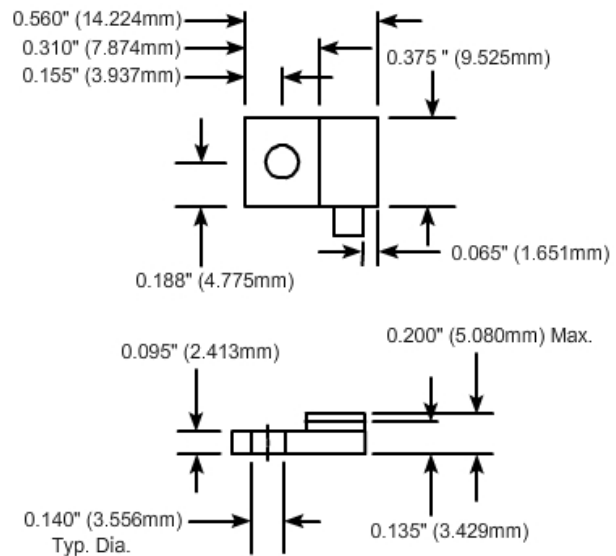
VSWR (Max.):

1.20:1
1.35:1

Standard Resistance Tolerance:

± 5% Other tolerances available upon request.

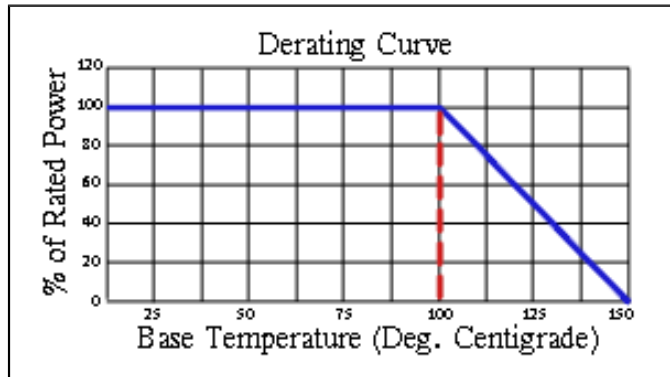
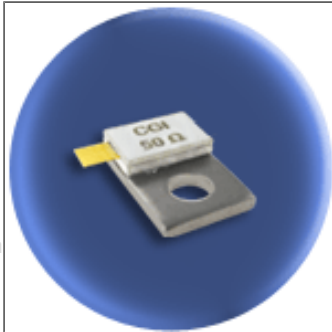
Part Dimensions



Component General, Inc.

P/N: CBT-50-4

Stripline Base Mounted Terminations



Mechanical Specifications

Covers:

Alumina Ceramic.

Substrate:

Beryllium Oxide Ceramic.

Contact:

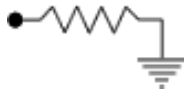
Beryllium Copper, Gold Plated per MIL-G-45204.
Length: 0.125" Min., Width: 0.120",
Thickness 0.004" ± 0.002".

Heat Sink:

Copper, Nickel Plated per QQ-N-290.

Tolerance:

± 0.010" unless specified.



Note: The use of thermal mounting compound is recommended.

Electrical Specifications

Resistance Value:

10 - 1000 Ω or as required. Other values available upon request.

Frequency Range:

DC - .5 GHz
.5 - 1.0 GHz

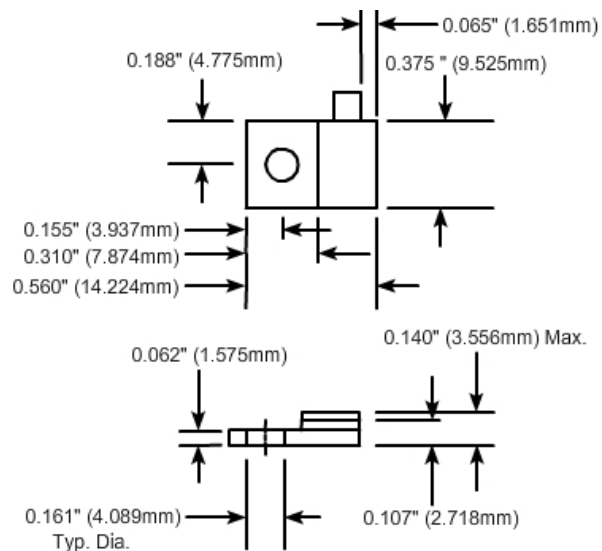
VSWR (Max.):

1.20:1
1.35:1

Standard Resistance Tolerance:

± 5% Other tolerances available upon request.

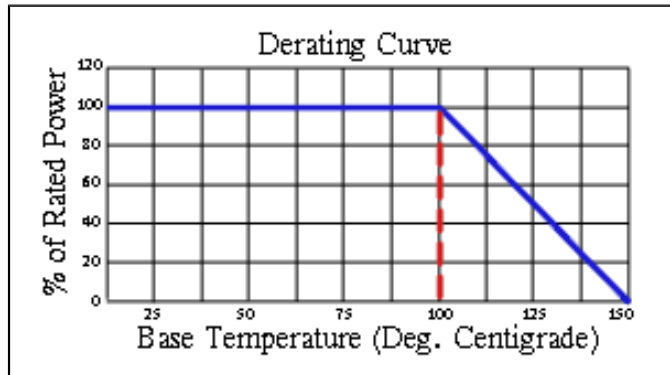
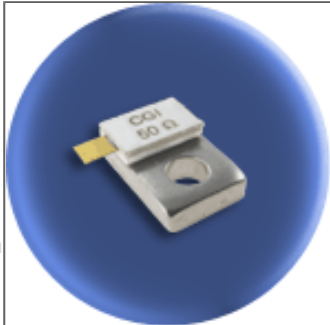
Part Dimensions



Component General, Inc.

P/N: CBT-50-5

Stripline Base Mounted Terminations



Mechanical Specifications

Covers:

Alumina Ceramic.

Substrate:

Beryllium Oxide Ceramic.

Contact:

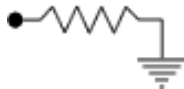
Beryllium Copper, Gold Plated per MIL-G-45204.
Length: 0.125" Min., Width: 0.120",
Thickness 0.004" ± 0.002".

Heat Sink:

Copper, Nickel Plated per QQ-N-290.

Tolerance:

± 0.010" unless specified.



Note: The use of thermal mounting compound is recommended.

Electrical Specifications

Resistance Value:

10 - 1000 Ω or as required. Other values available upon request.

Frequency Range:

DC - .5 GHz
.5 - 1.0 GHz

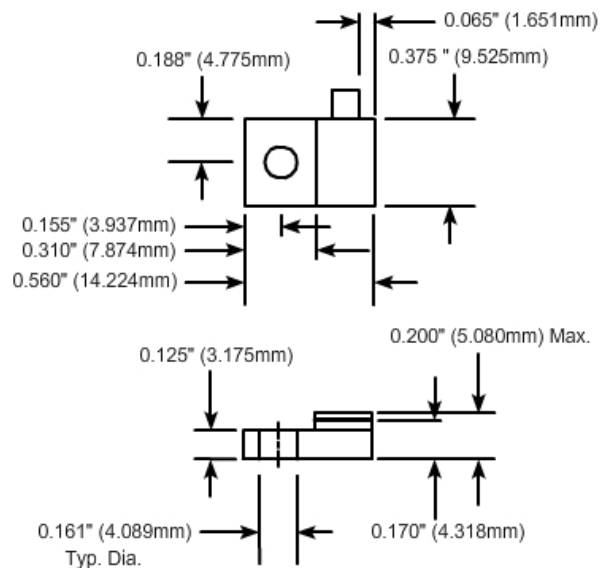
VSWR (Max.):

1.20:1
1.35:1

Standard Resistance Tolerance:

± 5% Other tolerances available upon request.

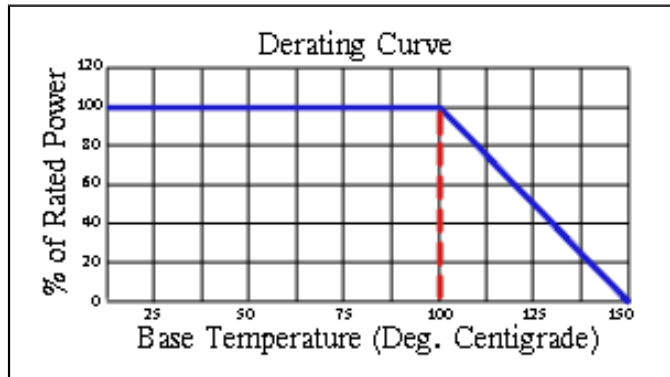
Part Dimensions



Component General, Inc.

P/N: CBT-50-6

Stripline Base Mounted Terminations



Mechanical Specifications

Covers:

Alumina Ceramic.

Substrate:

Beryllium Oxide Ceramic.

Contact:

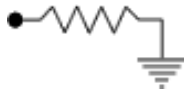
Beryllium Copper, Gold Plated per MIL-G-45204.
Length: 0.125" Min., Width: 0.120",
Thickness 0.004" ± 0.002".

Heat Sink:

Copper, Nickel Plated per QQ-N-290.

Tolerance:

± 0.010" unless specified.



Note: The use of thermal mounting compound is recommended.

Electrical Specifications

Resistance Value:

10 - 1000 Ω or as required. Other values available upon request.

Frequency Range:

DC - .5 GHz
.5 - 1.0 GHz

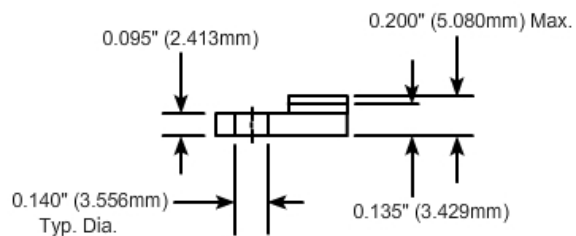
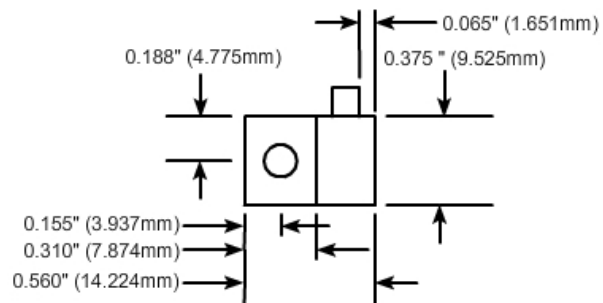
VSWR (Max.):

1.20:1
1.35:1

Standard Resistance Tolerance:

± 5% Other tolerances available upon request.

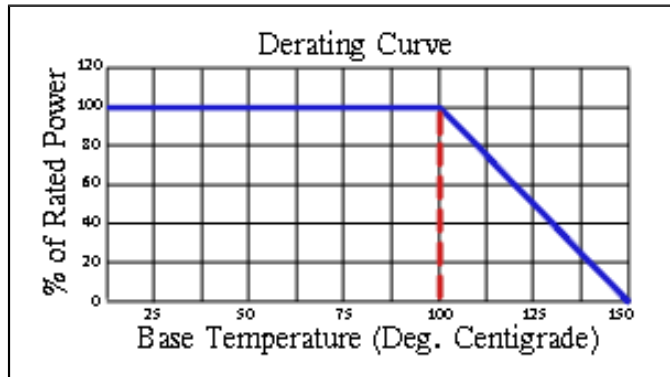
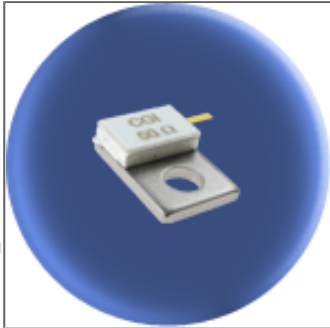
Part Dimensions



Component General, Inc.

P/N: CBT-50-7

Stripline Base Mounted Terminations



Mechanical Specifications

Covers:

Alumina Ceramic.

Substrate:

Beryllium Oxide Ceramic.

Contact:

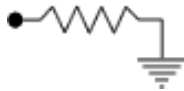
Beryllium Copper, Gold Plated per MIL-G-45204.
Length: 0.125" Min., Width: 0.040",
Thickness 0.004" \pm 0.002".

Heat Sink:

Copper, Nickel Plated per QQ-N-290.

Tolerance:

\pm 0.010" unless specified.



Note: The use of thermal mounting compound is recommended.

Electrical Specifications

Resistance Value:

10 - 1000 Ω or as required. Other values available upon request.

Frequency Range: VSWR (Max.):

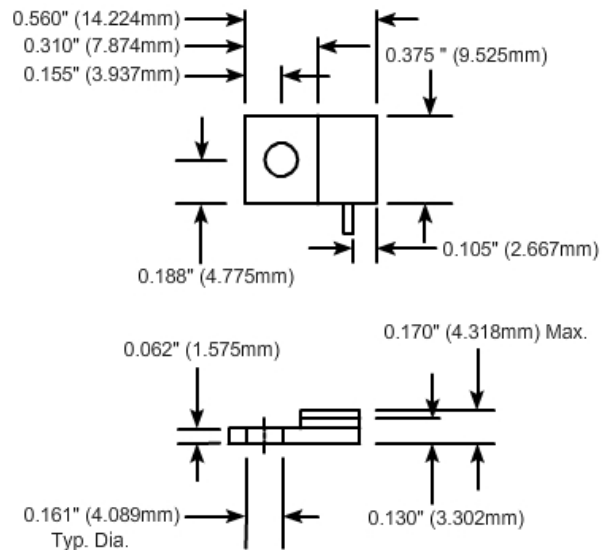
DC - 6.0 GHz

1.25:1

Standard Resistance Tolerance:

\pm 5% Other tolerances available upon request.

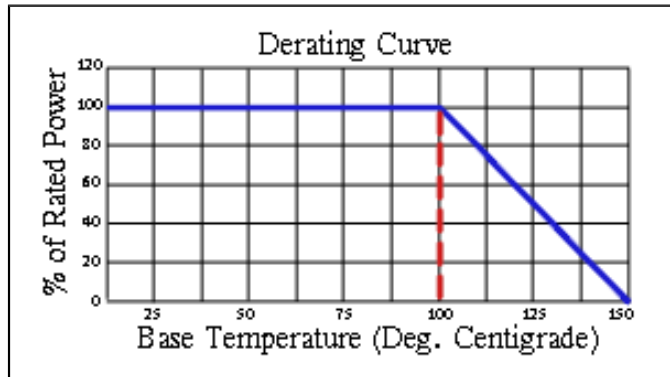
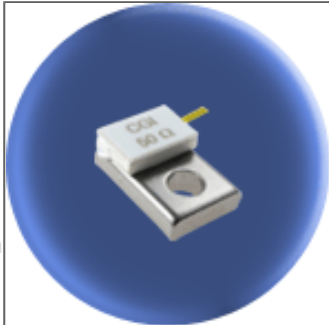
Part Dimensions



Component General, Inc.

P/N: CBT-50-8

Stripline Base Mounted Terminations



Mechanical Specifications

Covers:

Alumina Ceramic.

Substrate:

Beryllium Oxide Ceramic.

Contact:

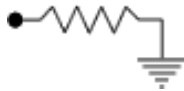
Beryllium Copper, Gold Plated per MIL-G-45204.
Length: 0.125" Min., Width: 0.040",
Thickness 0.004" \pm 0.002".

Heat Sink:

Copper, Nickel Plated per QQ-N-290.

Tolerance:

\pm 0.010" unless specified.



Note: The use of thermal mounting compound is recommended.

Electrical Specifications

Resistance Value:

10 - 1000 Ω or as required. Other values available upon request.

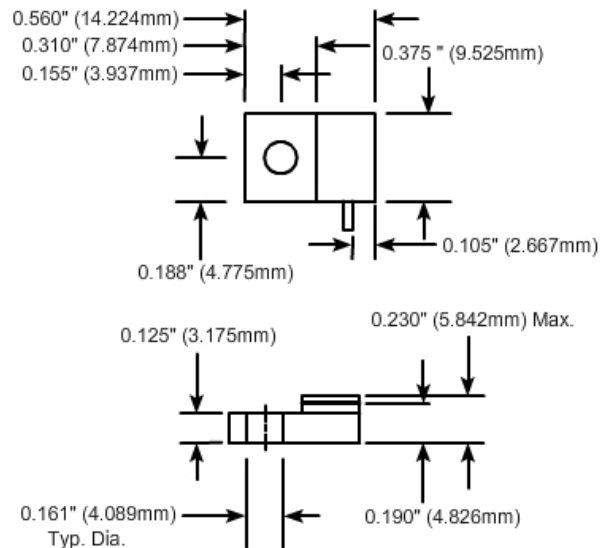
Frequency Range: DC - 6.0 GHz

VSWR (Max.): 1.25:1

Standard Resistance Tolerance:

\pm 5% Other tolerances available upon request.

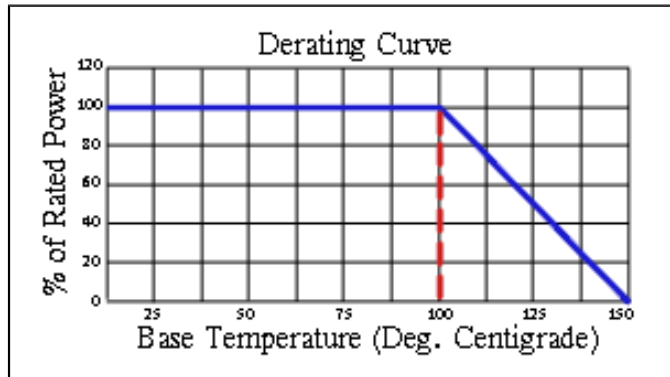
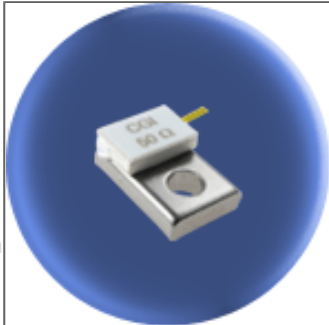
Part Dimensions



Component General, Inc.

P/N: CBT-50-9

Stripline Base Mounted Terminations



Mechanical Specifications

Covers:

Alumina Ceramic.

Substrate:

Beryllium Oxide Ceramic.

Contact:

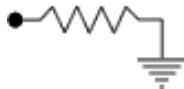
Beryllium Copper, Gold Plated per MIL-G-45204. Length: 0.125" Min., Width: 0.040", Thickness 0.004" ± 0.002".

Heat Sink:

Copper, Nickel Plated per QQ-N-290.

Tolerance:

± 0.010" unless specified.



Note: The use of thermal mounting compound is recommended.

Electrical Specifications

Resistance Value:

10 - 1000 Ω or as required. Other values available upon request.

Frequency Range:

DC - 6.0 GHz

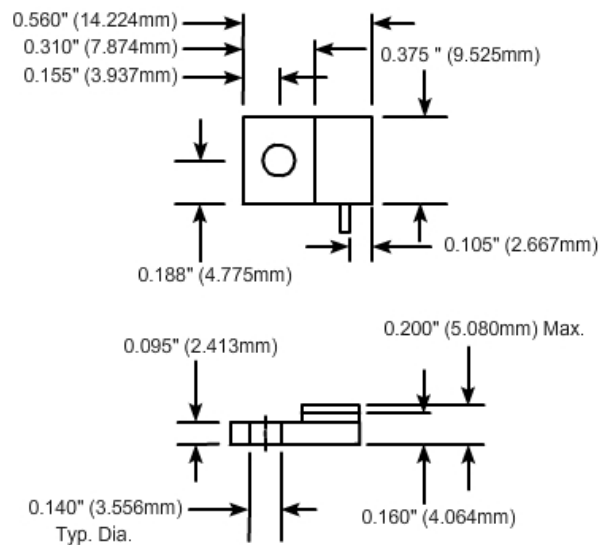
VSWR (Max.):

1.25:1

Standard Resistance Tolerance:

± 5% Other tolerances available upon request.

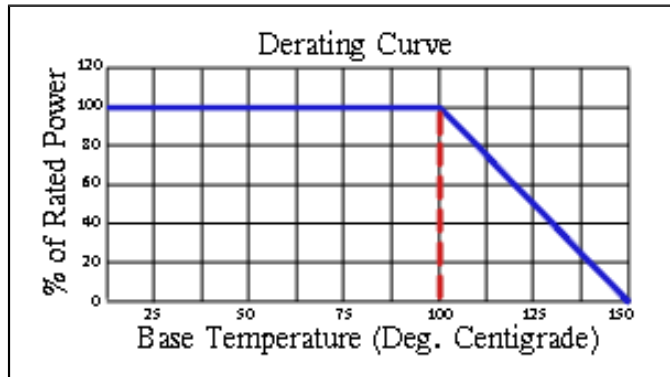
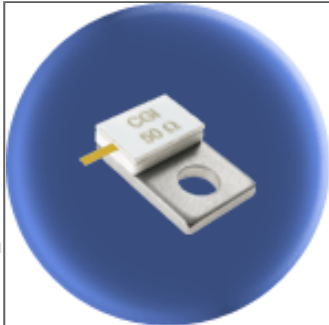
Part Dimensions



Component General, Inc.

P/N: CBT-50-10

Stripline Base Mounted Terminations



Mechanical Specifications

Covers:

Alumina Ceramic.

Substrate:

Beryllium Oxide Ceramic.

Contact:

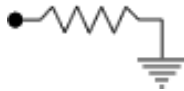
Beryllium Copper, Gold Plated per MIL-G-45204.
Length: 0.125" Min., Width: 0.040",
Thickness 0.004" ± 0.002".

Heat Sink:

Copper, Nickel Plated per QQ-N-290.

Tolerance:

± 0.010" unless specified.



Note: The use of thermal mounting compound is recommended.

Electrical Specifications

Resistance Value:

10 - 1000 Ω or as required. Other values available upon request.

Frequency Range:

DC - 6.0 GHz

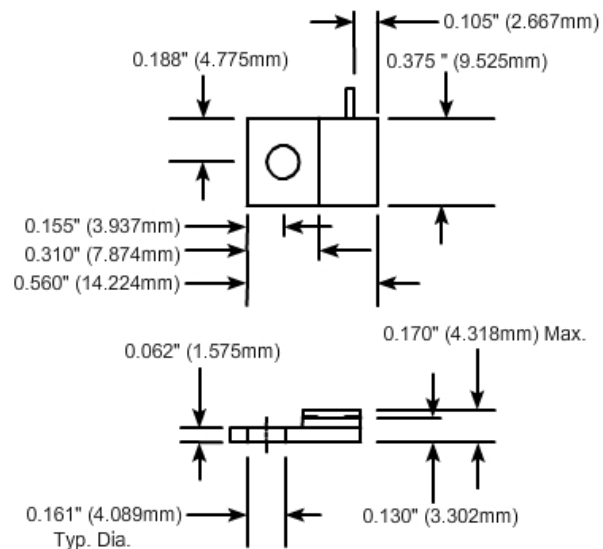
VSWR (Max.):

1.25:1

Standard Resistance Tolerance:

± 5% Other tolerances available upon request.

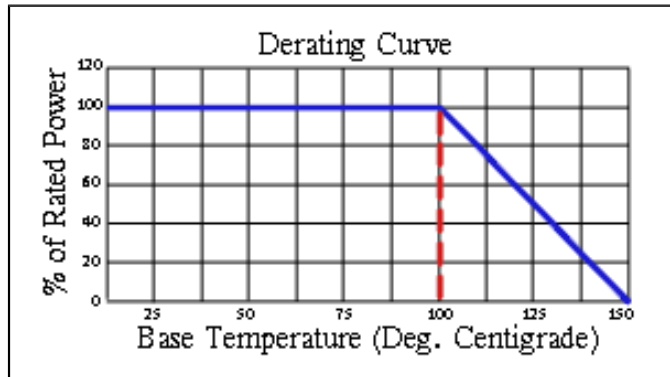
Part Dimensions



Component General, Inc.

P/N: CBT-50-11

Stripline Base Mounted Terminations



Mechanical Specifications

Covers:

Alumina Ceramic.

Substrate:

Beryllium Oxide Ceramic.

Contact:

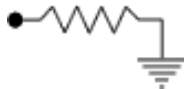
Beryllium Copper, Gold Plated per MIL-G-45204.
Length: 0.125" Min., Width: 0.040",
Thickness 0.004" ± 0.002".

Heat Sink:

Copper, Nickel Plated per QQ-N-290.

Tolerance:

± 0.010" unless specified.



Note: The use of thermal mounting compound is recommended.

Electrical Specifications

Resistance Value:

10 - 1000 Ω or as required. Other values available upon request.

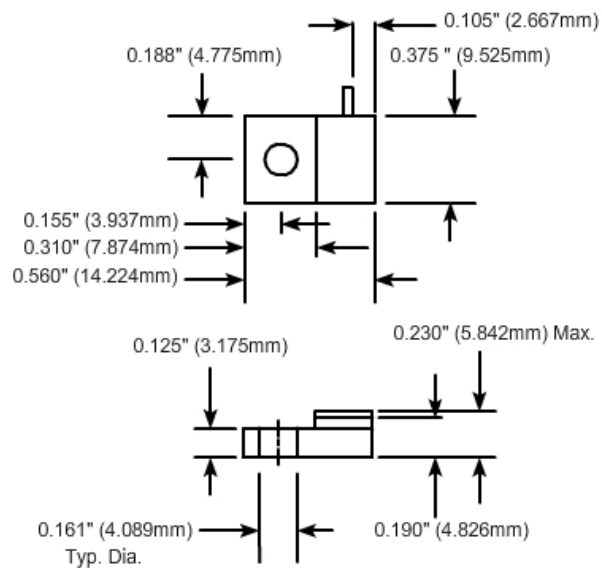
Frequency Range: VSWR (Max.):

DC - 6.0 GHz 1.25:1

Standard Resistance Tolerance:

± 5% Other tolerances available upon request.

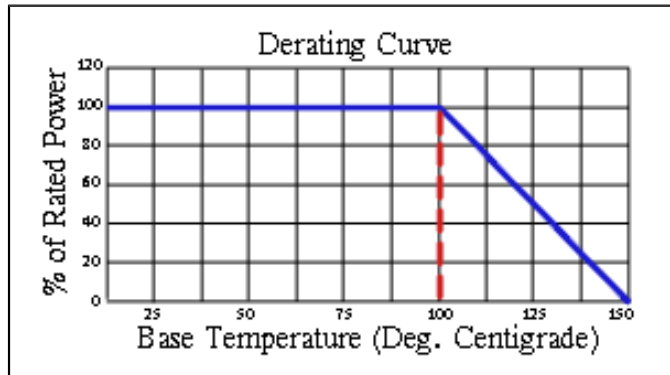
Part Dimensions



Component General, Inc.

P/N: CBT-50-12

Stripline Base Mounted Terminations



Mechanical Specifications

Covers:

Alumina Ceramic.

Substrate:

Beryllium Oxide Ceramic.

Contact:

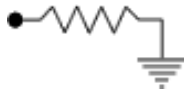
Beryllium Copper, Gold Plated per MIL-G-45204.
Length: 0.125" Min., Width: 0.040",
Thickness 0.004" ± 0.002".

Heat Sink:

Copper, Nickel Plated per QQ-N-290.

Tolerance:

± 0.010" unless specified.



Note: The use of thermal mounting compound is recommended.

Electrical Specifications

Resistance Value:

10 - 1000 Ω or as required. Other values available upon request.

Frequency Range:

DC - 6.0 GHz

VSWR (Max.):

1.25:1

Standard Resistance Tolerance:

± 5% Other tolerances available upon request.

Part Dimensions

