

Features

- Card detection switch
- Compatible with lead free THT soldering
- Chamfered opening in the card entry slot improves the card guidance

Typical Applications

- Consumer
- Set-top box
- Pay TV



Mechanical

Number of Contacts	8
Mechanical life	See table
Card insertion force	See table
Card extraction force	1 N min / 10 N max
Contact force	0,2N / 0,50 N max

Packaging

Tray 30 parts / Cartons 300 parts

Soldering

Compatible with lead free THT soldering process

Contact Electrical Data

Insulation resistance	1,000 MΩ min
Resistance	100 mΩ max
Current rating	10 μA min / 1 A max
Dielectric strength	750 Vrms min

Switch Electrical Data

Card detection switch	Normally closed
Contact resistance	100 mΩ max
Dielectric strength	250 Vrms min
Current rating	1 mA min / 10 mA max
Maximum power	0,2 VA

Environmental Data

Operating temperature	-20°C to +70°C
Damp heat	IEC 512 test number 11c (10 days)
Salt mist	IEC 512 test number 11f (96 hours)
RoHS compliant	

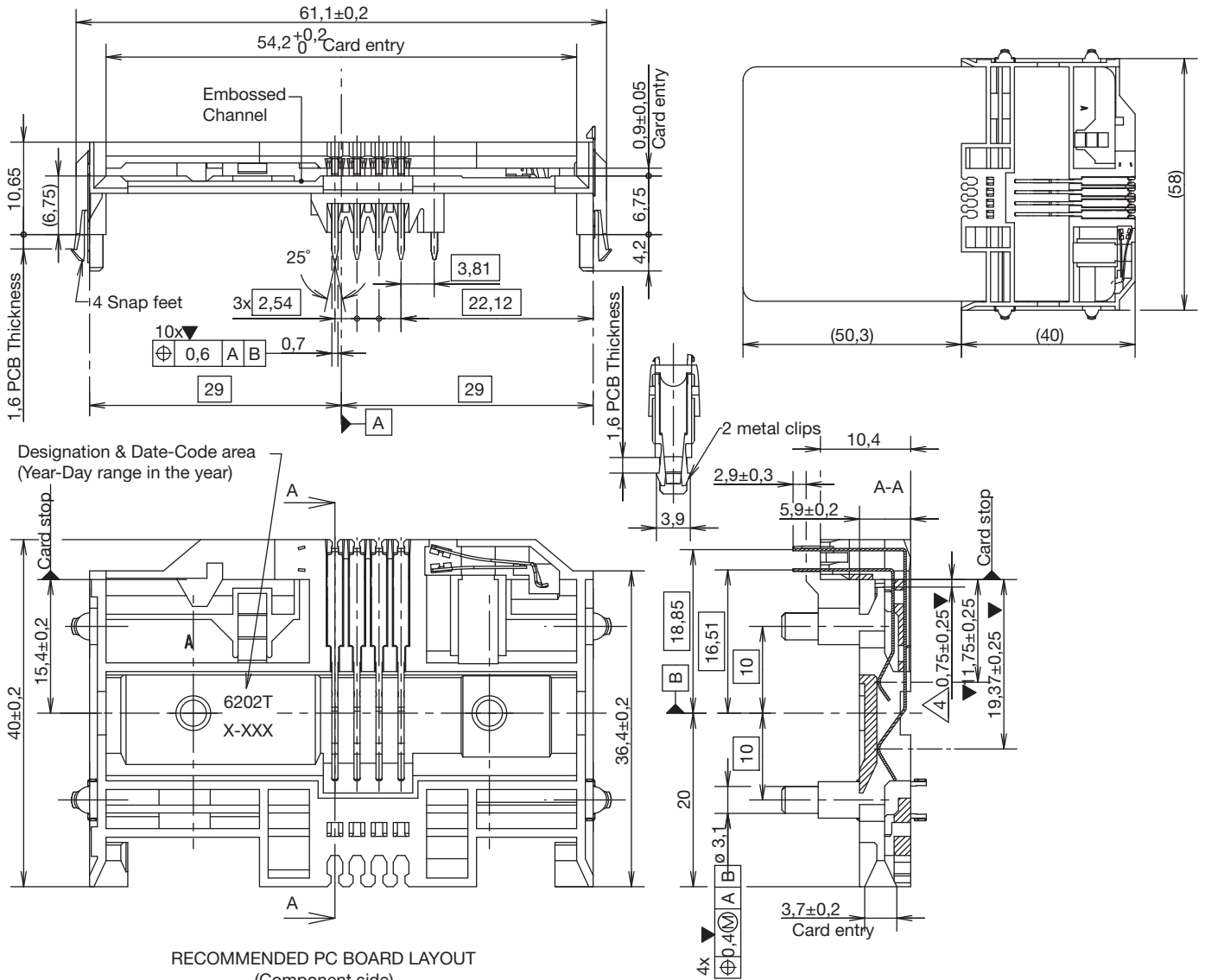
Designation	Termination	Contact Plating	Height (mm)	Operating Life	Operating Temperature	Card Insertion Force
CCM01-6202MLFT	THT	gold	6,75	10,000 cycles	-20°C/+70°C	10N
CCM01-6101LFT	THT	gold	3,9	30,000 cycles	-20°C/+70°C	10N



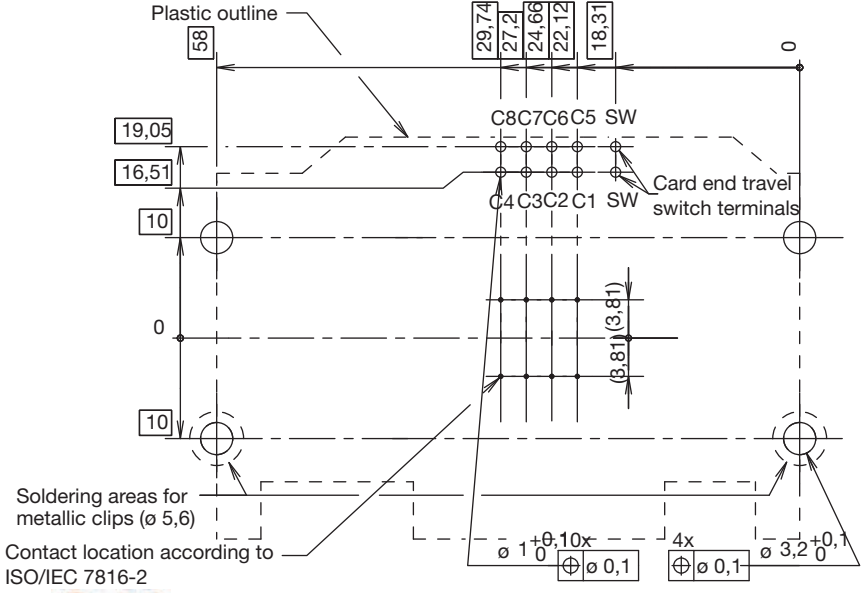
CCM01 Series

CCM01-6202M LFT

Full Size



RECOMMENDED PC BOARD LAYOUT
(Component side)

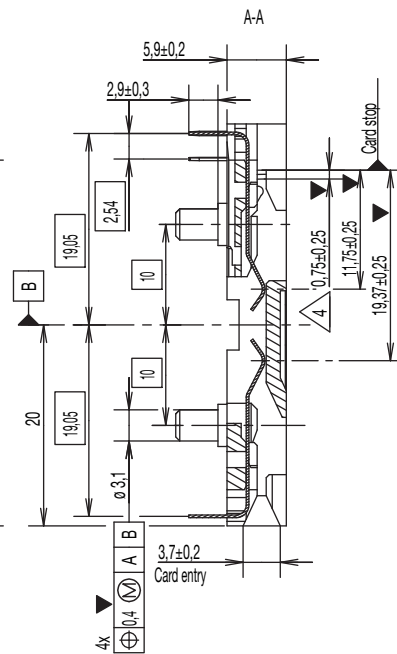
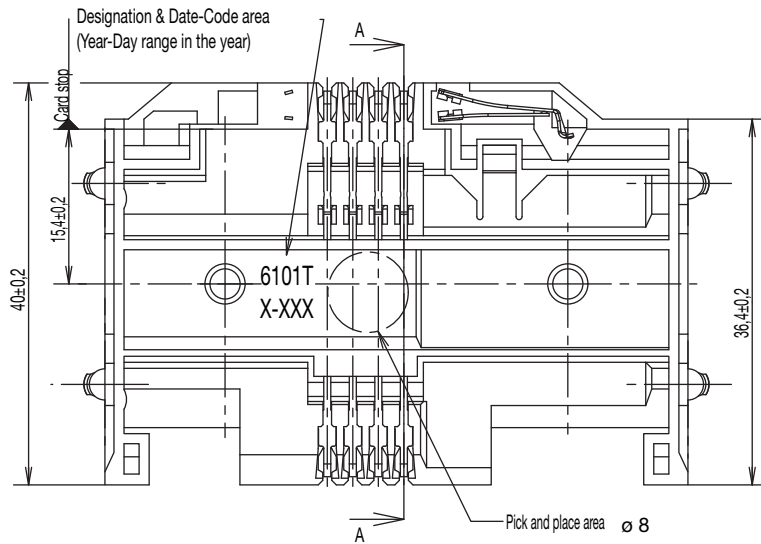
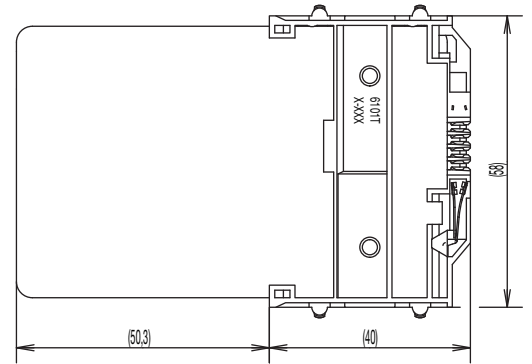
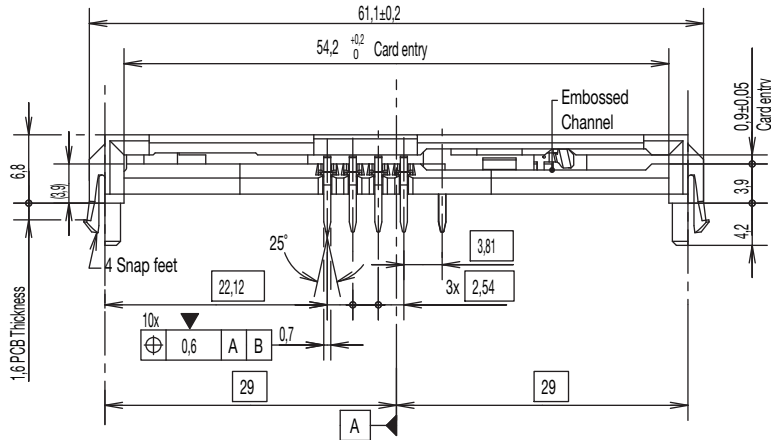


Dimensions are shown in mm
Specifications and dimensions subject to change

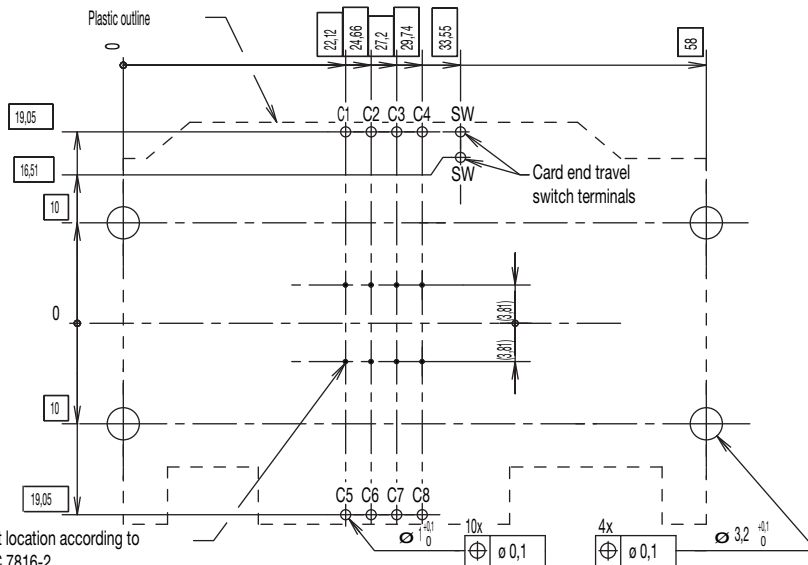
www.ck-components.com

CCM01-6101 LFT

Full Size



RECOMMENDED PC BOARD LAYOUT
(Component side)



Contact location according to ISO/IEC 7816-2



Dimensions are shown in mm
Specifications and dimensions subject to change

www.ck-components.com