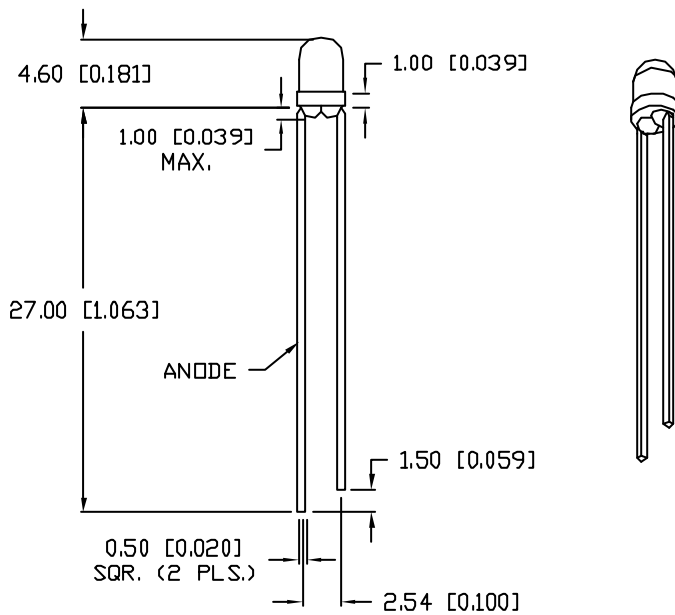
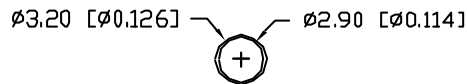


UNCONTROLLED DOCUMENT

PA
SSL-

REV.	E.C.N. NUMBER
A	REMOVED FLAT E
B	UPDATED SPECS.
C	E.C.N. #10BRDR.



ELECTRO-OPTICAL CHARACTERISTICS

PARAMETER	MIN
PEAK WAVELENGTH	
FORWARD VOLTAGE	
REVERSE VOLTAGE	5.0
AXIAL INTENSITY	
VIEWING ANGLE	
EMITTED COLOR:	AMBER
EPOXY LENS FINISH:	AMBER DIF

LIMITS OF SAFE OPERATION AT 25°C

PARAMETER
PEAK FORWARD CURRENT*
STEADY CURRENT
POWER DISSIPATION
DERATE FROM 25°C
OPERATING, STORAGE TEMP.
SOLDERING TEMP.
2.0mm FROM BODY
* $t < 10\mu s$

*UNLESS OTHERWISE SPECIFIED TOLERANCES PER DECIMAL PRECISION ARE: X=±1 (±0.039), XX=±0.5 (±0.020), XXX=±0.25 (±0.010), XXXX=±0.127 (±0.005), LEAD SIZE=±0.05 (±0.002), LEAD LENGTH=±0.05 (±0.002)

UNCONT

REV. C	PART NUMBER SSL-LX3044AD
T-3mm (T-1) 605nm AMBER LED, AMBER DIFFUSED LENS.	

CONFIDENTIAL INFORMATION
THE INFORMATION CONTAINED IN THIS DOCUMENT IS THE PROPERTY OF LUMEX INC. EXCEPT AS SPECIFICALLY AUTHORIZED IN WRITING BY LUMEX INC., THE HOLDER OF THIS DOCUMENT SHALL KEEP ALL INFORMATION CONTAINED HEREIN CONFIDENTIAL AND SHALL PROTECT SAME IN WHOLE OR IN PART FROM DISCLOSURE AND DISSEMINATION TO ALL THIRD PARTIES.

RELIABILITY NOTE
OUR MANY YEARS OF EXPERIENCE DATA ACCUMULATION INDICATE THAT SOLDER HEAT IS A MAJOR CAUSE OF EARLY AND FUTURE FAILURE. PLEASE PAY ATTENTION TO YOUR SOLDERING PROCESS.

DRAWN BY: BC	CHECKED
-----------------	---------