

PLEASE CHECK WWW.MOLEX.COM FOR LATEST PART INFORMATION

Part Number: [0351641302](#)
Status: **Active**
Description: 2.50mm (.098") Pitch Board-In Housing, 13 Circuits, Red

Documents:

[Drawing \(PDF\)](#) [RoHS Certificate of Compliance \(PDF\)](#)
[Product Specification PS-35164-001 \(PDF\)](#)

General

Product Family	Crimp Housings
Series	35164
Product Name	Board-In

Physical

Circuits (maximum)	13
Circuits Detail	13
Color - Resin	Red
Gender	Male
Glow-Wire Compliant	No
Keying to Mating Part	None
Lock to Mating Part	No
Material - Resin	Nylon
Number of Rows	1
Packaging Type	Bag
Panel Mount	No
Pitch - Mating Interface (in)	0.098 In
Pitch - Mating Interface (mm)	2.50 mm
Polarized to Mating Part	No
Stackable	No
Temperature Range - Operating	-40°C to +105°C

Electrical

Current - Maximum per Contact	3A
-------------------------------	----

Material Info

Reference - Drawing Numbers

Product Specification	PS-35164-001
Sales Drawing	SD-35164-**0*

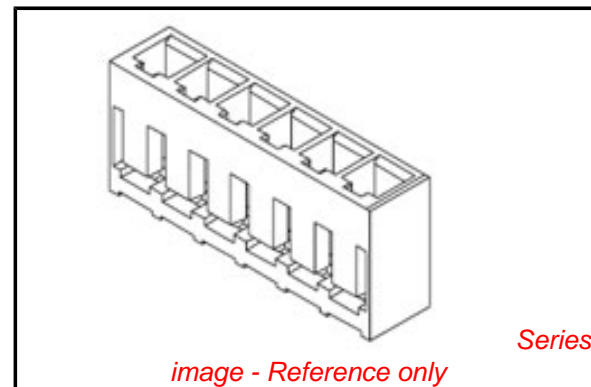


image - Reference only

EU RoHS **China RoHS**

Compliance Status

Not Reviewed

REACH SVHC

Not Reviewed

Halogen-Free

Status

Not Reviewed

Need more information on product environmental compliance?

Email productcompliance@molex.com
 For a multiple part number RoHS Certificate of Compliance, [click here](#)

Please visit the [Contact Us](#) section for any non-product compliance questions.

Search Parts in this Series

35164Series

Mates With

350479802 Board-In Terminal

PLEASE CHECK WWW.MOLEX.COM FOR LATEST PART INFORMATION

10 9 8 7 6 5 4 3 2 1

F

E

D

C

B

A

F

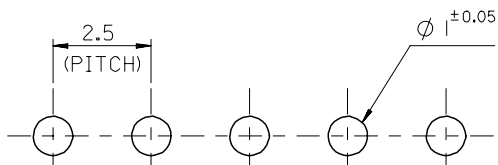
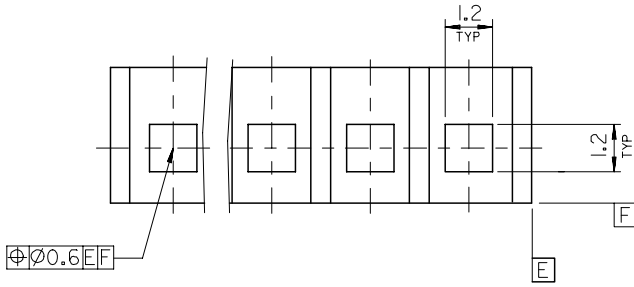
E

D

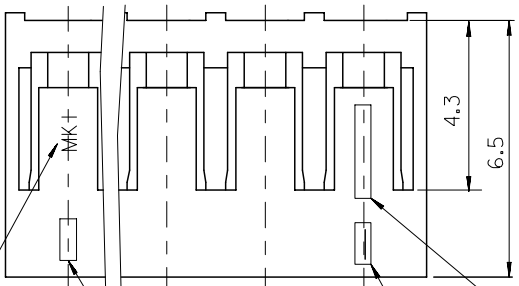
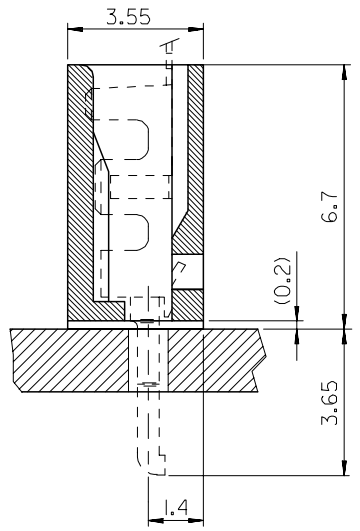
C

B

A



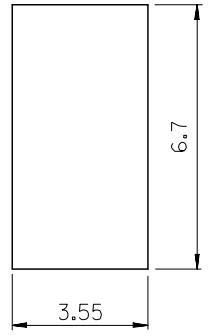
P.C.B LAYOUT (THICKNESS : 1.6)



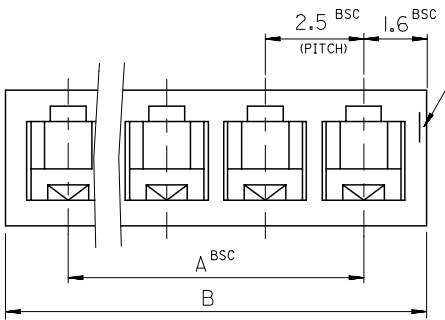
TRADE MARK (MK I)

CAVITY NO

ENG.NO (35164)



CIRCUIT NO. 1



NOTES

- 1. MATERIAL : NYLON66 UL94V-0
- 2. MATED WITH TERMINAL : 35047-9802

LEGEND

35164- ** 0 *
 COLOR : 0 --- NATURAL
 2 --- RED
 CKT (02 , 03 , 04)

38.2	35	35164 -150*	15
35.7	32.5	-140*	14
34.0	30	-130*	13
30.7	27.5	-120*	12
28.2	25	-110*	11
25.7	22.5	-100*	10
23.2	20	-090*	9
20.7	17.5	-080*	8
18.2	15	-070*	7
15.7	12.5	-060*	6
13.2	10	-050*	5
10.7	7.5	-040*	4
8.2	5.0	-030*	3
5.7	2.5	35164 -020*	2
B	A	ENG.NO	CKT

REVISED EC NO: KOR2008-0071 DRWN:H/JEONG 2007/10/30 CHKD:Y/SOOKIM 2007/10/31 APPR:Y/UNSIKKIM 2007/10/31	QUALITY SYMBOLS	GENERAL TOLERANCES (UNLESS SPECIFIED)	DIMENSION STYLE	SCALE	DESIGN UNITS	THIRD ANGLE PROJECTION
	$\nabla=0$ $\nabla C=0$	mm INCH 4 PLACES ± --- ± --- 3 PLACES ± --- ± --- 2 PLACES ± --- ± --- 1 PLACE ± 0.3 ± --- ANGULAR ± 2 °	MM ONLY	8:1	METRIC	TITLE 2.5 PITCH BOARD-IN CONN. HOUSING
	DRAWN BY DATE KSKIM 2001/10/25 CHECKED BY DATE JUNGKILOH 2001/10/25 APPROVED BY DATE CHANGWOOLE 2001/10/25	MATERIAL NO. SEE TABLE MOLEX INCORPORATED	DOCUMENT NO. SD-35164-**-0*	SHEET NO. 1 OF 1		
	DRAFT WHERE APPLICABLE MUST REMAIN WITHIN DIMENSIONS	SIZE A3	THIS DRAWING CONTAINS INFORMATION THAT IS PROPRIETARY TO MOLEX INCORPORATED AND SHOULD NOT BE USED WITHOUT WRITTEN PERMISSION			

9 8 7 6 5 4 3 2 1