

**PLEASE CHECK WWW.MOLEX.COM FOR LATEST PART INFORMATION**

**Part Number:** [0357490910](#)  
**Status:** **Active**  
**Description:** Spade Tongue Terminal for 16-20 AWG (0.30~0.80mm<sup>2</sup>), Stud Size 8 M4, Post Tin Plated

**Documents:**

[Drawing \(PDF\)](#) [RoHS Certificate of Compliance \(PDF\)](#)  
[Product Specification PS-35749-001 \(PDF\)](#)

**General**

Product Family	Ring and Spade Terminals
Series	<a href="#">35749</a>
Crimp Quality Equipment	Yes
Mil-Spec	N/A
Product Name	N/A
Type	Spade

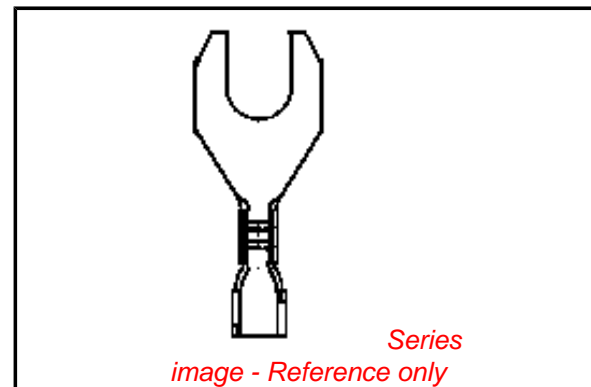
**Physical**

Barrel Type	Open
Insulation	None
Material - Plating Mating	Tin
Packaging Type	Reel
Stud Size	8 (M4)
Wire Insulation Diameter	2.40mm(.094") max.
Wire Size AWG	16, 18, 20
Wire Size mm <sup>2</sup>	0.30 - 0.80

**Material Info**

**Reference - Drawing Numbers**

Product Specification	PS-35749-001
Sales Drawing	SD-35749-090



**EU RoHS**

**ELV and RoHS Compliant**  
**REACH SVHC**  
**Contains SVHC: No**  
**Halogen-Free**  
**Status**

**China RoHS**



**Halogen-Free**

**Need more information on product environmental compliance?**

Email [productcompliance@molex.com](mailto:productcompliance@molex.com)  
 For a multiple part number RoHS Certificate of Compliance, [click here](#)

Please visit the [Contact Us](#) section for any non-product compliance questions.

**Search Parts in this Series**  
[35749Series](#)

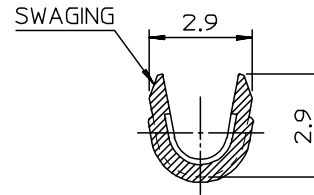
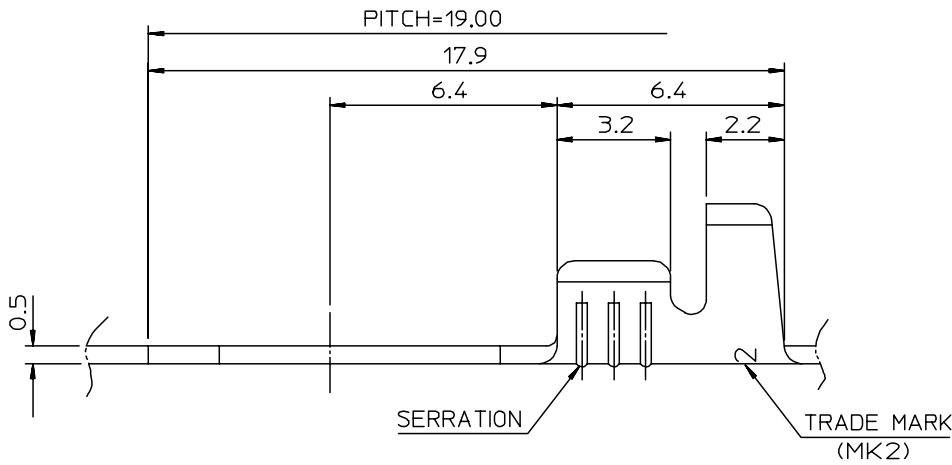
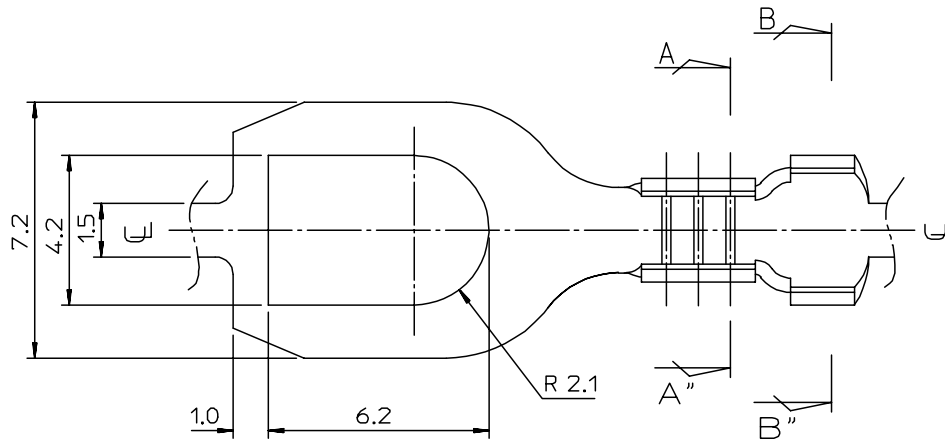
DWG. NO.  
SD-35749-090

SIMILAR ITEM

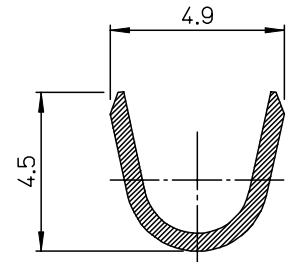
PROJECT NO.

B

DO NOT SCALE DRAWING  
DIMENSION IN METRIC



SEC' : A-A"



SEC' : B-B"

NOTES

1. MATERIAL : BRASS , 0.5 mm THICKNESS
2. FINISH : 35749-0900(UNPLATED)  
35749-0910(POST PLATED TIN)  
35749-0940(POST PLATED TIN-LEAD)
3. RECOMMENDED LENGTH OF WIRE STRIP IS 4.2-4.8 mm.
4. APPLICABLE WIRE RANGE : AWG #20-#16

REVISED ECN NO. KR2005-0011 DRWN: C.B.CHIN 04/08/16 CHK: W.Y.YANG APPR: C.W.LEE	DESCRIPTION	QUALITY SYMBOLS	GENERAL TOLERANCES: (UNLESS SPECIFIED)		SCALE 7:1	DESIGN UNITS <input checked="" type="checkbox"/> mm <input type="checkbox"/> INCH	THIRD ANGLE PROJECTION <input checked="" type="checkbox"/> <input type="checkbox"/>	DIMENSIONS: <input type="checkbox"/> mm <input type="checkbox"/> INCH <input checked="" type="checkbox"/> mm ONLY	SHT	REV
		MAJOR ▲ = 0 CRITICAL ▽ = 0	mm	INCH	DRAWN BY & DATE J.SKANG 93/08/25	TITLE: SPADE TERMINAL				
C	REV	4 PLACES	±0.	±-	CHECKED BY & DATE B.K.CHOI 93/08/25		MOLEX INCORPORATED			
		3 PLACES	±0.	±-	APPROVED BY & DATE C.W.LEE 93/08/25		MATERIAL NO. SEE NOTES		DRAWING NO. SD-35749-090	SHEET NO. 1 OF 1
		2 PLACES	±0.3	±-	ANGULAR: ± °		THIS DRAWING CONTAINS INFORMATION THAT IS PROPRIETARY TO MOLEX INCORPORATED AND SHOULD NOT BE USED WITHOUT WRITTEN PERMISSION.		SIZE B	
		1 PLACE	±0.3	±-	DRAFT WHERE APPLICABLE MUST REMAIN WITHIN DIMENSIONS		KOREA		MX-A3	