

# Totalizers mechanic

## Meter counters PTB approved

### Display 5 digits, manual reset by lever

#### M 310.A



M 310.A - PTB Meter counter

#### Features

- PTB Meter counter, small
- Adding
- Display 5-digits
- Reset by lever

#### Technical data - mechanical design

Function	PTB Meter counter
Display	White numbers on black Decimal digits in red
Number of digits	5-digits
Digit height	4.5 mm
Reset	Manual by reset lever. Do not let snap or make jerky movements.
PTB approval	1.3 / 90.02
Count mode	Adding in a rotational direction to be indicated, subtracting in reverse direction. 5 revolutions = 100 counts
Drive shaft	Both sides, $\varnothing 4$ mm
Measuring speed	<60 m/min
Measuring precision	1 cm
Measuring range	999.99 m/cm
Operating temperature	0...+60 °C
Housing type	Surface mount housing with mounting plate
Housing colour	Grey
Dimensions W x H x L	69 x 48 x 28 mm
Dimensions mounting plate	80 x 48 mm
Mounting	Base plate, 6 long mounting holes
Weight approx.	130 g
Materials	Housing: Hostaform POM, grey Base plate: Steel zinc-coated

#### Description

Meter counter M 310.A is calibrated by the German Physical-Technical Institute (PTB) and approved for calibrated measuring systems. However, our customers must apply for calibration of the whole measuring system at the corresponding calibration authorities.

# Totalizers mechanic

## Meter counters PTB approved

### Display 5 digits, manual reset by lever

M 310.A

#### Part number

M 310.A0

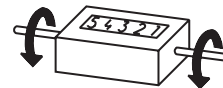
Display / direction of rotation

- 1 5-digits 999.99 m, 5 revolutions  
= 100 digits / direction I
- 2 5-digits 999.99 m, 5 revolutions  
= 100 digits / direction II

#### Direction of strokes and rotation



Away from user  
Sense of rotation I



Towards user  
Sense of rotation II

#### Accessories

##### Measuring wheels (page %S)

MR211.04A Circumf. 20 cm, knurled aluminium

MR241.04D Circumf. 20 cm, smooth Hytrel TPE-E

MR261.04A Circumf. 20 cm, knopped rubber NBR Nitril

MR291.04D Circumf. 20 cm, grooved Hytrel TPE-E

#### Dimensions

