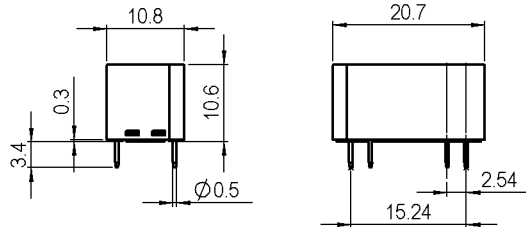


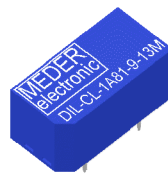
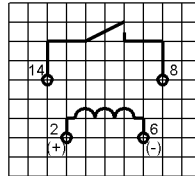
Products for tomorrow...

DIMENSIONS (mm)



Pins: Ø0.5 mm
 L = 3.4±0.3 mm
 Material: Cu-alloy tinned

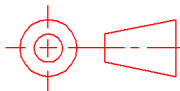
LAYOUT (13M)
 pitch 2.54 mm/Top view



MARKING



MEDER-Label
 Type
 Production code



tolerances according to DIN ISO 2768 m

Coil Data at 20 °C	Conditions	Min	Typ	Max	Unit
Coil resistance		8.1	9	9.9	Ohm
Coil current				357	mA
Inductance		2.56		3.84	mH

Contact data 81	Conditions	Min	Typ	Max	Unit
Contact rating	Any DC combination of V & A not to exceed their individual max.'s			5	W
Switching voltage	DC or Peak AC			90	V
Switching current	DC or Peak AC			0.5	A
Carry current	DC or Peak AC			1	A
Contact resistance static	Measured with 40% overdrive Start Value			250	mOhm
Insulation resistance	RH <45 %, 100 V test voltage	1			TOhm
Breakdown voltage	according to IEC 255-5	100			VDC
Operate time incl. bounce	measured with 40% overdrive			0.5	ms
Release	measured with no coil excitation			0.1	ms
Capacity	@ 10 kHz across open switch		0.2		pF

Special Product Data	Conditions	Min	Typ	Max	Unit
Number of contacts				1	
Contact - form				A - NO	
Dielectric Strength Coil/Contact	according to IEC 255-5	4.25			kV DC
Insulation resistance Coil/Contact	RH <45%, 200 VDC measuring voltage	1			TOhm
Case colour					
Housing material				Metal	
Sealing compound				Polyurethan	
Connection pins				Copper alloy tin plated	

Environmental data	Conditions	Min	Typ	Max	Unit
Shock	1/2 sine, duration 11ms, in 3 axis			50	g
Vibration	from 10 - 2000 Hz			20	g
Operating temperature		-20		70	°C
Storage temperature		-35		95	°C
Soldering temperature	wave soldering max. 5 sec.			260	°C
Washability				fully sealed	

Modifications in the sense of technical progress are reserved

Designed at: 27.01.11 Designed by: CRUF Approval at: 09.03.11 Approval by: DRUDOLF
 Last Change at: 28.08.11 Last Change by: DRUDOLF Approval at: 28.08.11 Approval by: DRUDOLF

Rev. No.: 03