

**PLEASE CHECK WWW.MOLEX.COM FOR LATEST PART INFORMATION**

**Part Number:** [0712435100](#)  
**Status:** **Active**  
**Description:** 1.27mm (.050") Pitch DDR DIMM Socket, Single Key, Vertical, Plastic Peg, 184 Circuits

**Documents:**

[3D Model](#) [Product Specification PS-71243-9999 \(PDF\)](#)  
[Drawing \(PDF\)](#) [RoHS Certificate of Compliance \(PDF\)](#)  
[Packaging Specification \(PDF\)](#)

**General**

Product Family	Memory Module Sockets
Series	<a href="#">71243</a>
Comments	With Short Latches
Component Type	Memory Module
JEDEC Outline	N/A
Product Name	DIMM

**Physical**

Circuits (Loaded)	184
Circuits (maximum)	184
Color - Resin	Black, Natural
Durability (mating cycles max)	25
Entry Angle	Vertical (Top Entry)
Function Key	None
Keying to Mating Part	Yes
Material - Metal	Phosphor Bronze, Stainless Steel
Material - Plating Mating	Gold
Material - Plating Termination	Tin
Material - Resin	High Temperature Thermoplastic
PC Tail Length (in)	0.127 In
PC Tail Length (mm)	3.23 mm
PCB Locator	Yes
PCB Retention	Yes
PCB Thickness Recommended (in)	0.062 In
PCB Thickness Recommended (mm)	1.57 mm
Packaging Type	Tray
Pitch - Mating Interface (in)	0.050 In
Pitch - Mating Interface (mm)	1.27 mm
Pitch - Term. Interface (in)	0.050 In
Pitch - Term. Interface (mm)	1.27 mm
Plating min: Mating (µin)	2
Plating min: Mating (µm)	0.05
Plating min: Termination (µin)	150
Plating min: Termination (µm)	3.81
Temperature Range - Operating	-40°C to +85°C
Termination Interface: Style	Through Hole

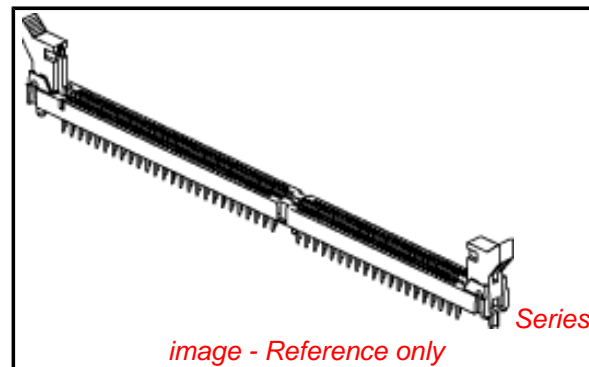
**Electrical**

Current - Maximum per Contact	1A
Voltage - Maximum	100V AC (RMS)/DC
Voltage Key	Left

**Material Info**

**Reference - Drawing Numbers**

Product Specification	PS-71243-9999
Sales Drawing	SD-71243-003



*image - Reference only*

**EU RoHS**

**ELV and RoHS  
Compliant**  
**REACH SVHC  
Contains SVHC: No**  
**Halogen-Free  
Status**

**China RoHS**



**Not Reviewed**

**Need more information on product  
environmental compliance?**

Email [productcompliance@molex.com](mailto:productcompliance@molex.com)  
 For a multiple part number RoHS Certificate of  
 Compliance, [click here](#)

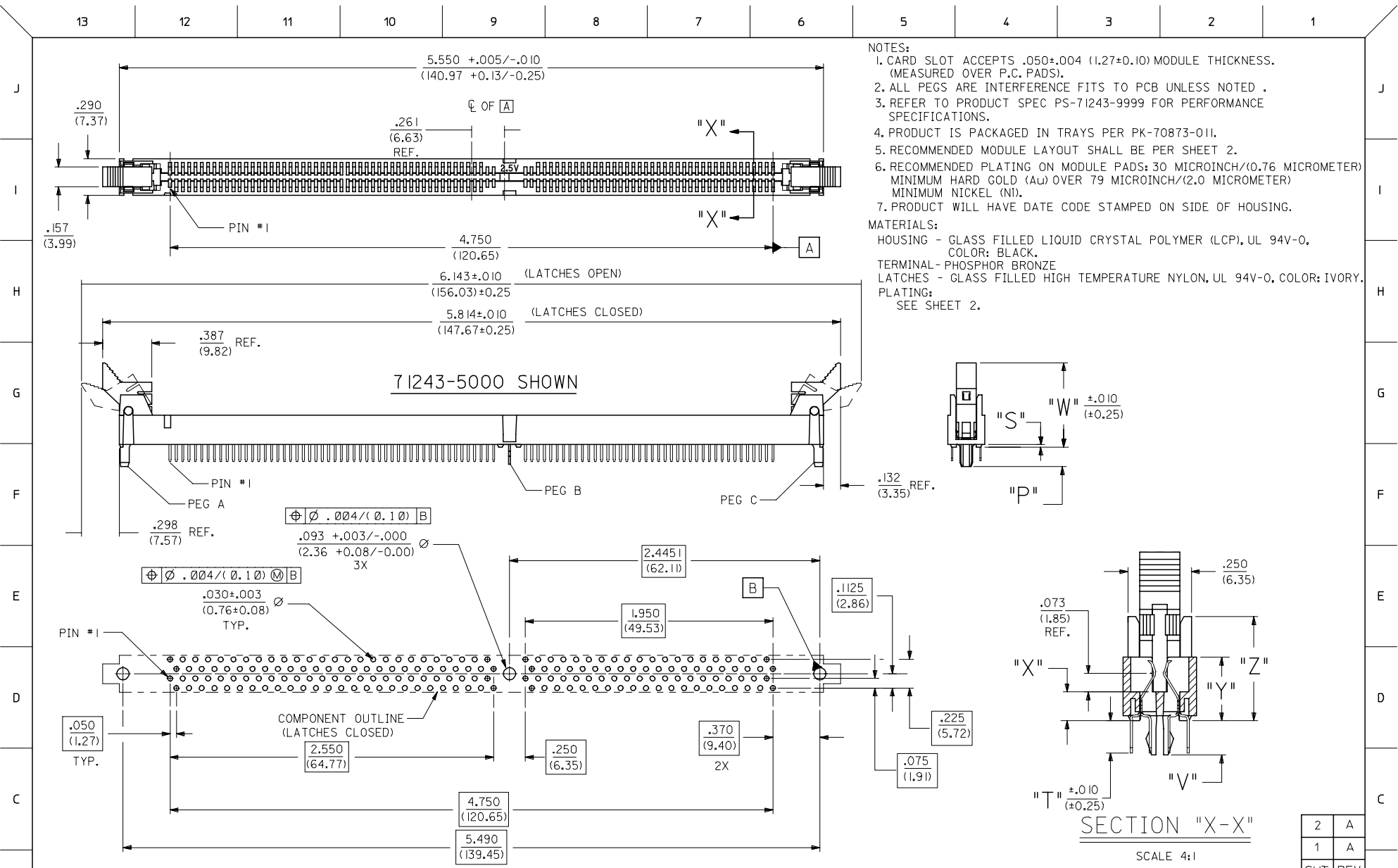
Please visit the [Contact Us](#) section for any  
 non-product compliance questions.

**Search Parts in this Series**

71243Series

This document was generated on 04/13/2010

**PLEASE CHECK [WWW.MOLEX.COM](http://WWW.MOLEX.COM) FOR LATEST PART INFORMATION**



- NOTES:
- CARD SLOT ACCEPTS .050±.004 (1.27±0.10) MODULE THICKNESS. (MEASURED OVER P.C. PADS).
  - ALL PEGS ARE INTERFERENCE FITS TO PCB UNLESS NOTED .
  - REFER TO PRODUCT SPEC PS-71243-9999 FOR PERFORMANCE SPECIFICATIONS.
  - PRODUCT IS PACKAGED IN TRAYS PER PK-70873-011.
  - RECOMMENDED MODULE LAYOUT SHALL BE PER SHEET 2.
  - RECOMMENDED PLATING ON MODULE PADS: 30 MICROINCH/(0.76 MICROMETER) MINIMUM HARD GOLD (Au) OVER 79 MICROINCH/(2.0 MICROMETER) MINIMUM NICKEL (Ni).
  - PRODUCT WILL HAVE DATE CODE STAMPED ON SIDE OF HOUSING.

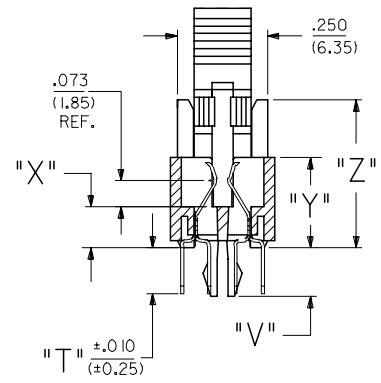
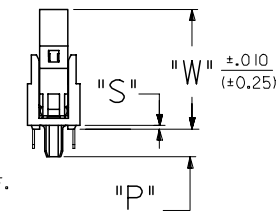
MATERIALS:

HOUSING - GLASS FILLED LIQUID CRYSTAL POLYMER (LCP), UL 94V-0, COLOR: BLACK.

TERMINAL - PHOSPHOR BRONZE

LATCHES - GLASS FILLED HIGH TEMPERATURE NYLON, UL 94V-0, COLOR: IVORY.

PLATING: SEE SHEET 2.



SCALE 4:1

2	A
1	A
SHT	REV

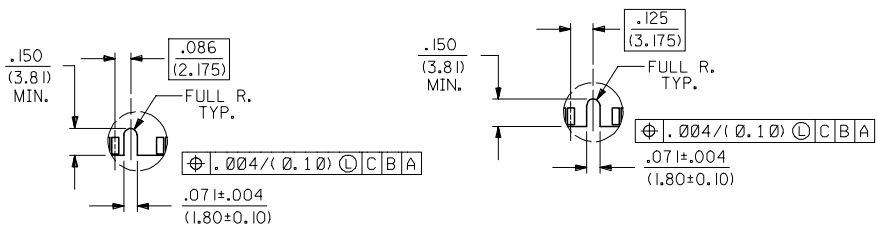
RECOMMENDED  
P.C. BOARD HOLE PATTERN  
(CONNECTOR SIDE)

INITIAL RELEASE FC NO: UCP2006-0472 DRAWN BY: MIBARRA CHKD: BSMART APPR: SMILLER DATE: 2005/09/28 DATE: 2005/10/03 DATE: 2005/10/11	DESCRIPTION DIMENSION SYMBOLS $\nabla=0$ $\nabla=0$	GENERAL TOLERANCES (UNLESS SPECIFIED)		DIMENSION STYLE IN/MM		SCALE 2:1	DESIGN UNITS INCH	THIRD ANGLE PROJECTION
		4 PLACES ± --- ± --- 3 PLACES ± --- ± .005 2 PLACES ± 0.13 ± .010 1 PLACE ± 0.25 ± --- ANGULAR ±1/2°	mm INCH	DRAWN BY MIBARRA CHECKED BY BSMART APPROVED BY SMILLER DATE 05/08/10 DATE 05/08/10 DATE 05/08/10	DATE 05/08/10	TITLE .050/(1.27) PITCH SINGLE KEY 184 CKT DDR DIMM WITH SHORT LATCHES	MATERIAL NO. SEE CHART	DOCUMENT NO. SD-71243-003
DRAFT WHERE APPLICABLE MUST REMAIN WITHIN DIMENSIONS		THIS DRAWING CONTAINS INFORMATION THAT IS PROPRIETARY TO MOLEX INCORPORATED AND SHOULD NOT BE USED WITHOUT WRITTEN PERMISSION						

PART NUMBER	DESCRIPTION	VOLTAGE KEY	PEG A	PEG B	PEG C	DIM. 'P'	DIM. 'S'	DIM. 'T'	DIM. 'V'	DIM. 'W'	DIM. 'X'	DIM. 'Y'	DIM. 'Z'	TERMINAL TYPE
71243-5100	2.5 VOLT VDDQ	OFFSET LEFT	PLASTIC PEG	METAL FORKLOCK	PLASTIC PEG	.155 (3.94)	.020 (0.51)	.127 (3.23)	.135 (3.43)	.664 (16.87)	.113 (2.87)	.250 (6.35)	.410 (10.41)	NOT LUBRICATED

NOTES:

- STRAIGHTNESS OF MODULE APPLIES TO THE AREA FROM THE BOTTOM OF THE CARD UP .157/(4.00).
- IF TIE BARS ARE ATTACHED TO PADS, THE TIE BAR SHOULD BE ON AN INTERNAL LAYER, SO THAT THE REMNANT CANNOT CAUSE DAMAGE TO THE CONTACTS.



OFFSET LEFT KEY

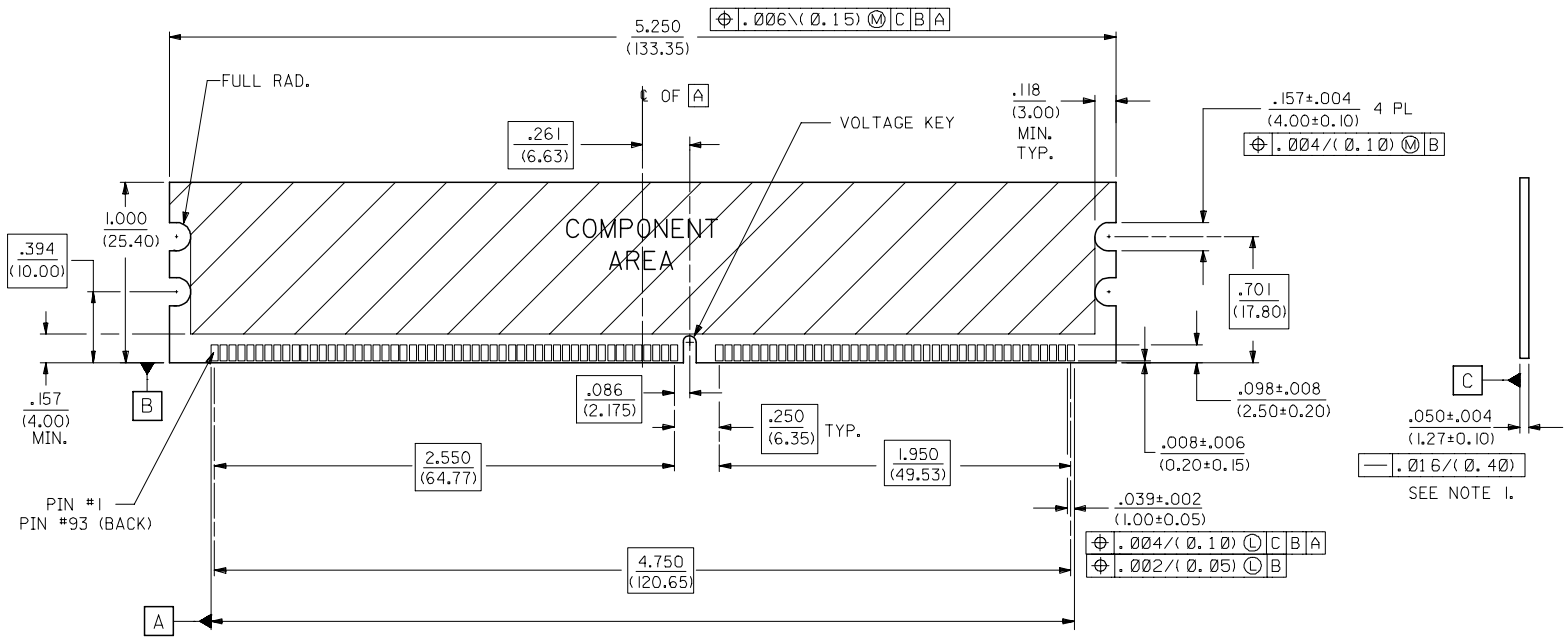
CENTERED KEY

PLATING:

CONTACT AREA:  
GOLD (Au) FLASH; THICKNESS=2-10 MICROINCH/(0.05-0.25 MICRO METER),  
OVER PALLADIUM-NICKEL (Pd-Ni); THICKNESS=30 MICROINCH/(0.76 MICROMETER) MINIMUM.

SOLDER TAILS:  
TIN (Sn); THICKNESS=150 MICROINCH/(3.81 MICROMETER) MINIMUM.

UNDERPLATE:  
NICKEL (Ni) OVER ENTIRE TERMINAL.



RECOMMENDED MODULE LAYOUT  
184 CKT 2.5V SHOWN

INITIAL RELEASE EC NO: UCP2006-0472 DRAWN BY: MIBARRA CHKD: BSMART APPR: SMILLER 2005/09/28 2005/10/03 2005/10/11	QUALITY SYMBOLS ▽=0 ▽=0	GENERAL TOLERANCES (UNLESS SPECIFIED)		DIMENSION STYLE IN/MM		SCALE 2:1	DESIGN UNITS INCH	THIRD ANGLE PROJECTION				
		4 PLACES ± .005 ± .005	3 PLACES ± .005 ± .005	2 PLACES ± 0.13 ± 0.10	1 PLACE ± 0.25 ± .005	ANGULAR ± 1/2°	DRAWN BY: MIBARRA DATE: 05/08/10	CHECKED BY: BSMART DATE: 05/08/10	APPROVED BY: SMILLER DATE: 05/08/10	MATERIAL NO.	DOCUMENT NO.	SHEET NO.
		DRAFT WHERE APPLICABLE MUST REMAIN WITHIN DIMENSIONS		SEE CHART		THIS DRAWING CONTAINS INFORMATION THAT IS PROPRIETARY TO MOLEX INCORPORATED AND SHOULD NOT BE USED WITHOUT WRITTEN PERMISSION		MOLEX INCORPORATED		SD-71243-003		2
		A		C		SIZE		MOLEX		MOLEX INCORPORATED		2