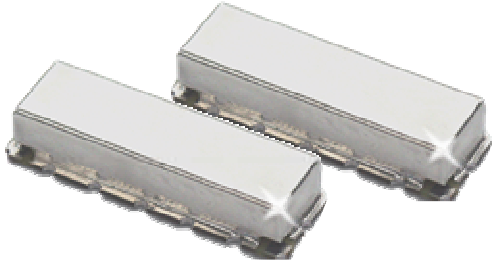


KR 2432-110 110 MHz Highpass Filter

General Description

KR 2432-110 is a 110 MHz surface mount highpass filter. Other passband frequencies are available. Please consult the factory.



Features

- Surface Mount Package
- Sharp Transition to Stopband
- 50 dB Stopband
- 50 Ω Source and Load

Typical Performance

Overall Response (10 dB/div)

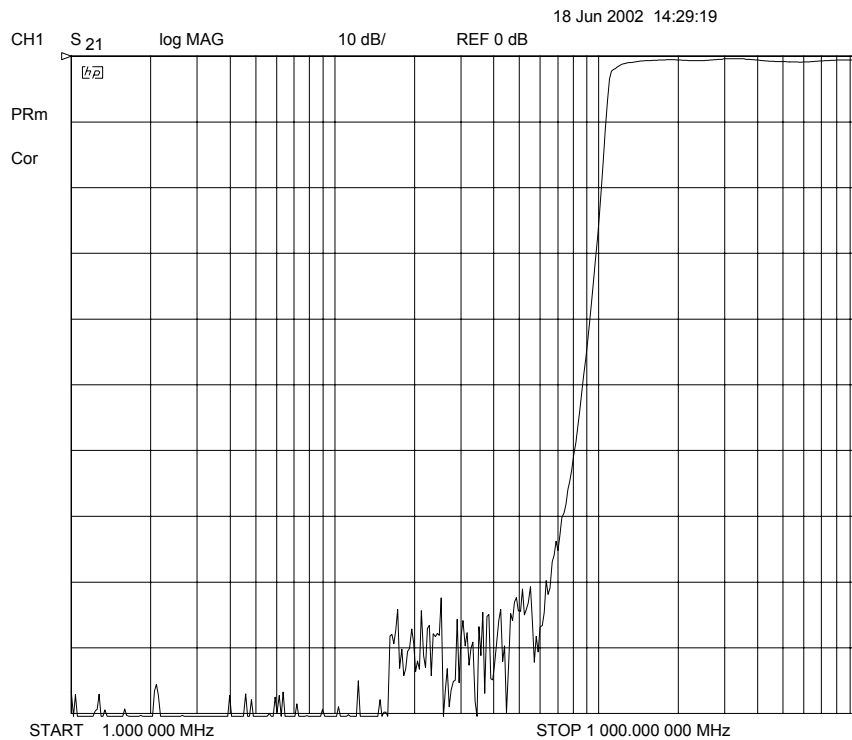


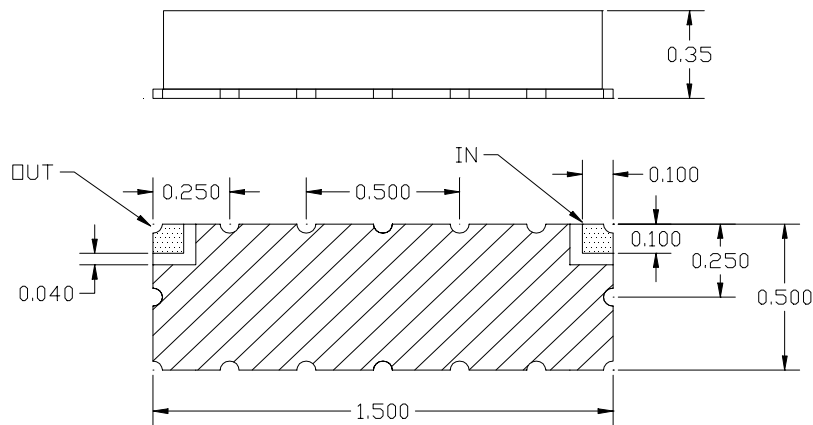
Figure 1

KR 2432-110 Highpass

Specifications

Parameter	Specification
Filter type	Highpass
End of Passband (3 dB)	110 MHz
Attenuation at 0.77 x Fc	≈ 50 dB
Source and Load	50 Ω

Physical Dimensions



Notes:

1. Surface mount package — Metal cover, open frame
2. Dimensions in inches
3. Use SN60 or SN63 solder during installation
4. If boards are cleaned after installation, units must be completely dried to remove any entrapped moisture that will effect electrical performance