

PLEASE CHECK WWW.MOLEX.COM FOR LATEST PART INFORMATION

Part Number: [0026033161](#)
Status: **Active**
Overview: [kk](#)
Description: 3.96mm (.156") Pitch KK® Crimp Terminal Housing - Use With Trifurcon® Terminals, 16 Circuits

Documents:

[3D Model](#) [Product Specification PS-40-02 \(PDF\)](#)
[Drawing \(PDF\)](#) [RoHS Certificate of Compliance \(PDF\)](#)

Agency Certification

CSA LR19980

General

Product Family Crimp Housings
 Series [6442](#)
 Overview [kk](#)
 Product Name KK®

Physical

Circuits (maximum) 16
 Color - Resin Natural
 Flammability 94V-2
 Gender Female
 Glow-Wire Compliant No
 Material - Resin Nylon
 Number of Rows 1
 Packaging Type Bag
 Panel Mount No
 Pitch - Mating Interface (in) 0.156 In
 Pitch - Mating Interface (mm) 3.96 mm
 Stackable No
 Temperature Range - Operating 0°C to +75°C

Material Info

Old Part Number 6442-16-Z

Reference - Drawing Numbers

Product Specification PS-40-02
 Sales Drawing SD-6442

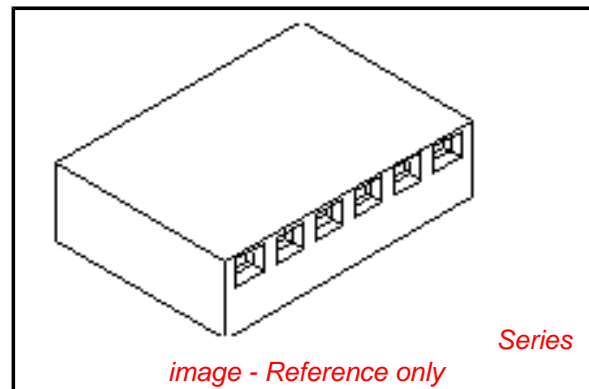


image - Reference only

EU RoHS

ELV and RoHS Compliant
REACH SVHC Contains SVHC: No
Halogen-Free Status

Not Reviewed

China RoHS



Need more information on product environmental compliance?

Email productcompliance@molex.com
 For a multiple part number RoHS Certificate of Compliance, [click here](#)

Please visit the [Contact Us](#) section for any non-product compliance questions.

Search Parts in this Series

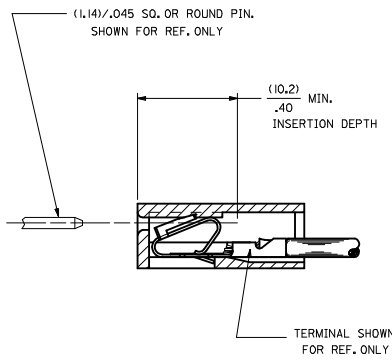
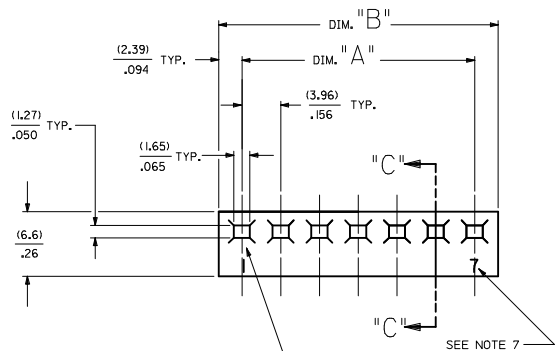
[6442Series](#)

Mates With

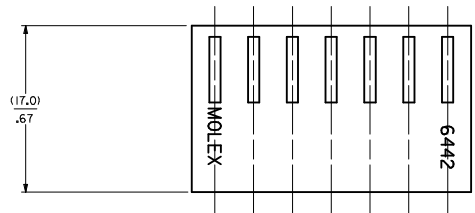
Molex 3.96mm (.156") pitch KK® headers

Use With

[6838](#) and [7258](#) KK® Trifurcon crimp terminals



SECTION "C-C"



| NO. OF CKT'S. | DIM. A | DIM. B |
|---------------|-------------|-------------|
| 1 | ----- | (4.78+.18) |
| 2 | (3.96+.13) | (8.74+.18) |
| 3 | .156+.005 | .344+.007 |
| 4 | (7.92+.13) | (12.70+.18) |
| 5 | .312+.005 | .500+.007 |
| 6 | (11.89+.13) | (16.66+.18) |
| 7 | .468+.005 | .656+.007 |
| 8 | (15.85+.13) | (20.62+.18) |
| 9 | .624+.005 | .812+.007 |
| 10 | (19.81+.13) | (24.59+.18) |
| 11 | .780+.005 | .968+.007 |
| 12 | (23.77+.13) | (28.55+.18) |
| 13 | .936+.005 | 1.124+.007 |
| 14 | (27.74+.25) | (32.51+.30) |
| 15 | 1.092+.010 | 1.280+.012 |
| 16 | (31.70+.25) | (36.47+.30) |
| 17 | 1.248+.010 | 1.436+.012 |
| 18 | (35.66+.25) | (40.44+.30) |
| 19 | 1.404+.010 | 1.592+.012 |
| 20 | (39.62+.25) | (44.40+.30) |
| 21 | 1.560+.010 | 1.748+.012 |
| 22 | (43.59+.25) | (48.36+.30) |
| 23 | 1.716+.010 | 1.904+.012 |
| 24 | (47.55+.30) | (52.32+.36) |
| | 1.872+.012 | 2.060+.014 |
| | (51.51+.36) | (56.29+.41) |
| | 2.028+.014 | 2.216+.016 |
| | (55.47+.36) | (60.25+.41) |
| | 2.184+.014 | 2.372+.016 |
| | (59.44+.36) | (64.21+.41) |
| | 2.340+.014 | 2.528+.016 |
| | (63.40+.36) | (68.17+.41) |
| | 2.496+.014 | 2.684+.016 |
| | (67.36+.36) | (72.14+.41) |
| | 2.652+.014 | 2.840+.016 |
| | (71.32+.36) | (76.10+.41) |
| | 2.808+.014 | 2.996+.016 |
| | (75.29+.46) | (80.06+.51) |
| | 2.964+.018 | 3.152+.020 |
| | (79.25+.46) | (84.02+.51) |
| | 3.120+.018 | 3.308+.020 |
| | (83.21+.46) | (87.99+.51) |
| | 3.276+.018 | 3.464+.020 |
| | (87.17+.46) | (91.95+.51) |
| | 3.432+.018 | 3.620+.020 |
| | (91.14+.46) | (95.91+.51) |
| | 3.588+.018 | 3.776+.020 |

- NOTES:
1. MATERIAL A: NYLON 6/6 UL94V-2. COLOR: NATURAL
 2. FINISH: N/A
 3. THIS PART COMPLIES WITH PRODUCT SPECIFICATION PS-40-02.
 4. SEE SHEET 2 FOR OPTIONS.
 5. HOUSING SHOWN ABOVE IS STANDARD HOUSING WITH NO OPTIONS.
 6. THIS HOUSING FOR USE WITH TERMINAL NO.,
6438-N, (18-22 GA) WITH (2.79)/.110 MAX. INSULATION DIA.
6838-N, (18-24 GA) WITH (2.79)/.110 MAX. INSULATION DIA.
7258-N, (22-26 GA) WITH (1.65)/.065 MAX. INSULATION DIA.
 7. CIRCUIT SIZE MOLDED ON 4 THRU 24 CIRCUIT HOUSINGS ONLY.
 8. THIS PART CONFORMS TO CLASS B REQUIREMENTS OF COSMETIC SPECIFICATION PS-45499-002.

HOUSING OPTIONS

| CODE | HOOKS | SIDE HOOKS | RAMP |
|-------|-------|------------|-----------|
| BLANK | NONE | NONE | NONE |
| A | NONE | YES | NONE |
| R | NONE | NONE | FRICITION |
| B | NONE | NONE | TYPE B |
| C | NONE | NONE | TYPE C |

6442- * N - * - * - *

VOLTAGE RATING OPTION
BLANK=NONE
V= '250 VAC' ON HOUSING

MAT'L OPTION
BLANK= MATERIAL A (SEE NOTE 1)

MOLDED VOID CODE
Z=NO VOIDS
A=CKT. 1 VOID,
B=CKT. 2 VOID, ETC.
5I=1ST MULTIPLE VOID,
52=2ND MULTIPLE VOID, ETC.

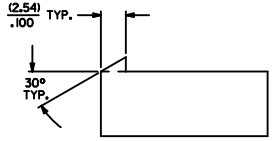
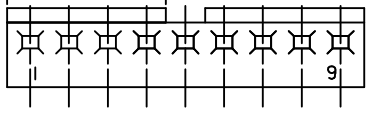
NO. OF CKT'S.

| | | | | | | | |
|-----------------------------------------------------------------------------------------------------------------------|-------------------------------|------------------------------------------------------|--------|-----------------|----------------------------------|------------------|----------------------------------------------------------------------|
| REMOVE D OPTION EC NO: UCP2009-3148 DRAWNKK/PPER 2009/07/13 CHKD:SSOUSEK 2009/07/13 APPR:FSMTH 2009/08/05 | QUALITY SYMBOLS ▽=0 ▽=0 | GENERAL TOLERANCES (UNLESS SPECIFIED) | | DIMENSION STYLE | SCALE | DESIGN UNITS | THIRD ANGLE PROJECTION |
| | | mm | INCH | MM/IN | --- | INCH | ☉ |
| | | 4 PLACES | ± --- | ± --- | DRAWN BY POLGAR DATE 1986/12/03 | | TITLE KK (3.96)/.156 TRIFURCON CRIMP TERMINAL HOUSING 6442 SERIES |
| | | 3 PLACES | ± --- | ± .010 | CHECKED BY PATEL DATE 1986/12/03 | | |
| | | 2 PLACES | ± 0.25 | ± .014 | APPROVED BY ENZ DATE 1986/12/03 | | MATERIAL NO. SEE CHART DOCUMENT NO. SD-6442 |
| | | 1 PLACE | ± 0.36 | ± --- | ANGULAR ±1/2° | | |
| | | DRAFT WHERE APPLICABLE MUST REMAIN WITHIN DIMENSIONS | | SIZE D | | SHEET NO. 1 OF 4 | |

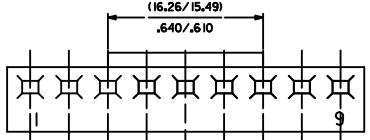
THIS DRAWING CONTAINS INFORMATION THAT IS PROPRIETARY TO MOLEX INCORPORATED AND SHOULD NOT BE USED WITHOUT WRITTEN PERMISSION

20 19 18 17 16 15 14 13 12 11 10 9 8 7 6 5 4 3 2 1

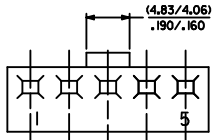
CONTINUOUS RAMP ON HOUSINGS UP TO 8 CIRCUITS, AND ON 9 THRU 24 CIRCUITS, RAMP ARE 4 CIRCUITS LONG, LOCATED AT BOTH ENDS.



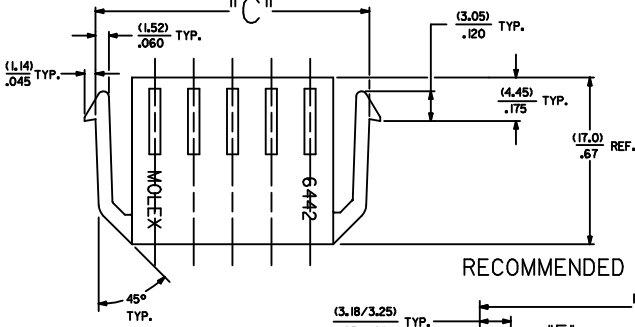
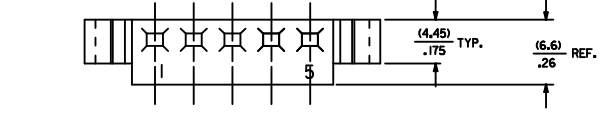
STD. RAMP OPTION CODE "R"



SELECTIVE RAMP OPTION CODE "C"

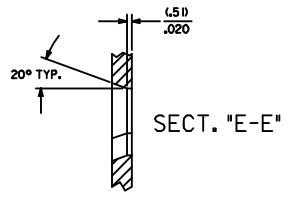
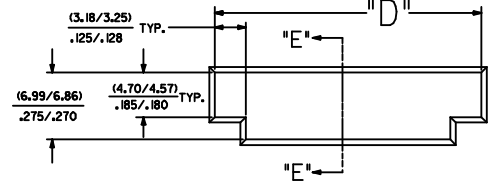


SELECTIVE RAMP OPTION CODE "B"

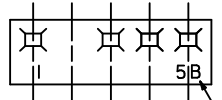


SIDE HOOKS OPTION CODE "A"

RECOMMENDED (2.03)/.080 THICK PANEL OPENING.

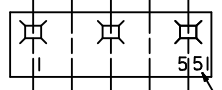


| NO. OF CKT'S. | DIM. "C" | DIM. "D" |
|---------------|---------------------------|---------------------------|
| 2 | (16.48/15.60) .643/.614 | (15.47/15.34) .609/.604 |
| 3 | (20.45/19.56) .805/.770 | (19.43/18.30) .765/.760 |
| 5 | (28.37/27.48) 1.117/1.082 | (27.36/27.23) 1.077/1.072 |



SINGLE VOID

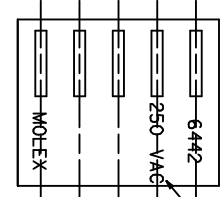
SINGLE CKT. VOID CODE



MULTIPLE VOIDS

MULTIPLE CKT. VOID CODE

MOLDED VOIDS
SEE LEGEND ON SHT. 1
SEE CHART FOR VOID CKT. LOCATIONS



SEE LEGEND ON SHT. 1

OPT. VOLTAGE RATING

| | | | | | | |
|-----------------------------------------------------------------------------------------------------------------------------|------------------------------------------------------|-------------------------------------------------------------------------------------------------------------------------------|-----------------|--------------|-------------------------------------------------------------------------------------------|------------------------------------------------------------------------------------------------------------------|
| SEE SHEET 1 IEC NO. UCP2009-3148 DRAWN BY DRANKIPPER CHKD BY SSOUSEK APPR. BY SMITH 2009/07/13 2009/08/05 | QUALITY SYMBOLS | GENERAL TOLERANCES (UNLESS SPECIFIED) | DIMENSION STYLE | SCALE | DESIGN UNITS | THIRD ANGLE PROJECTION |
| | ▽=0 ▽=0 | mm INCH 4 PLACES ± .010 3 PLACES ± .014 2 PLACES ± 0.25 1 PLACE ± 0.36 ANGULAR ± 1/2° | MM/IN | --- | INCH | DRAWN BY POLGAR CHECKED BY PATEL APPROVED BY LENZ DATE 1986/12/05 DATE 1986/12/05 DATE 1986/12/05 |
| | DRAFT WHERE APPLICABLE MUST REMAIN WITHIN DIMENSIONS | SEE CHART | MATERIAL NO. | DOCUMENT NO. | TITLE KK (3.96)/156 TRIFURCON CRIMP TERMINAL HOUSING 6442 SERIES MOLEX INCORPORATED | |
| | SIZE D | THIS DRAWING CONTAINS INFORMATION THAT IS PROPRIETARY TO MOLEX INCORPORATED AND SHOULD NOT BE USED WITHOUT WRITTEN PERMISSION | SD-6442 | 2 OF 4 | | |

19 18 17 16 15 14 13 12 11 10 9 8 7 6 5 4 3 2 1

| | 20 | 19 | 18 | 17 | 16 | 15 | 14 | 13 | 12 | 11 | 10 | 9 | 8 | 7 | 6 | 5 | 4 | 3 | 2 | 1 | |
|---|-----------------|-----------|-------|------------------|-------------|-------|------------------|----------|-------|-------------------|-------------|-------|------------------|----------|-------|------------------|----------|-------|----------|----------|-------|
| | 6442-N** | | | 6442-RN** | | | 6442-RN** | | | 6442-RND** | | | 6442-BN** | | | 6442-CN** | | | | | |
| | PART NO. | ENG. NO. | VOIDS | PART NO. | ENG. NO. | VOIDS | PART NO. | ENG. NO. | VOIDS | PART NO. | ENG. NO. | VOIDS | PART NO. | ENG. NO. | VOIDS | PART NO. | ENG. NO. | VOIDS | PART NO. | ENG. NO. | VOIDS |
| M | 26-03-3011 | 6442-1-Z | | 26-03-4011 | 6442-R1-Z | | | | | 26-03-7021 | 6442-R1D-Z | | | | | | | | | | |
| | 26-03-3021 | 6442-2-Z | | 26-03-4020 | 6442-R2-Z | | | | | 26-03-7031 | 6442-R2D-Z | | | | | | | | | | |
| | 26-03-3031 | 6442-3-Z | | 26-03-4030 | 6442-R3-Z | | | | | 26-03-7041 | 6442-R3D-Z | | | | | | | | | | |
| | 26-03-3041 | 6442-4-Z | | 26-03-4041 | 6442-R4-Z | | | | | | 6442-R4D-Z | | | | | | | | | | |
| | 26-03-3051 | 6442-5-Z | | 26-03-4050 | 6442-R5-Z | | | | | | 6442-R5D-Z | | | | | | | | | | |
| L | 26-03-3061 | 6442-6-Z | | 26-03-4061 | 6442-R6-Z | | | | | 26-03-7071 | 6442-R6D-Z | | | | | | | | | | |
| | 26-03-3071 | 6442-7-Z | | 26-03-4070 | 6442-R7-Z | | | | | | 6442-R7D-Z | | | | | | | | | | |
| | 26-03-3081 | 6442-8-Z | | 26-03-4081 | 6442-R8-Z | | | | | | 6442-R8D-Z | | | | | | | | | | |
| | 26-03-3091 | 6442-9-Z | | 26-03-4090 | 6442-R9-Z | | | | | 26-03-7091 | 6442-R9D-Z | | | | | | | | | | |
| | 26-03-3101 | 6442-10-Z | | 26-03-4101 | 6442-R10-Z | | | | | | 6442-R10D-Z | | | | | | | | | | |
| | 26-03-3111 | 6442-11-Z | | 26-03-4111 | 6442-R11-Z | | | | | | 6442-R11D-Z | | | | | | | | | | |
| | 26-03-3121 | 6442-12-Z | | 26-03-4121 | 6442-R12-Z | | | | | 26-03-7121 | 6442-R12D-Z | | | | | | | | | | |
| | 26-03-3131 | 6442-13-Z | | 26-03-4131 | 6442-R13-Z | | | | | | 6442-R13D-Z | | | | | | | | | | |
| K | 26-03-3141 | 6442-14-Z | | 26-03-4141 | 6442-R14-Z | | | | | | 6442-R14D-Z | | | | | | | | | | |
| | 26-03-3151 | 6442-15-Z | | 26-03-4151 | 6442-R15-Z | | | | | | 6442-R15D-Z | | | | | | | | | | |
| | 26-03-3161 | 6442-16-Z | | 26-03-4161 | 6442-R16-Z | | | | | | 6442-R16D-Z | | | | | | | | | | |
| | 26-03-3171 | 6442-17-Z | | 26-03-4171 | 6442-R17-Z | | | | | 26-03-7171 | 6442-R17D-Z | | | | | | | | | | |
| | 26-03-3181 | 6442-18-Z | | 26-03-4181 | 6442-R18-Z | | | | | | 6442-R18D-Z | | | | | | | | | | |
| | 26-03-3191 | 6442-19-Z | | 26-03-4191 | 6442-R19-Z | | | | | | 6442-R19D-Z | | | | | | | | | | |
| J | 26-03-3201 | 6442-20-Z | | 26-03-4201 | 6442-R20-Z | | | | | | 6442-R20D-Z | | | | | | | | | | |
| | 26-03-3211 | 6442-21-Z | | 26-03-4211 | 6442-R21-Z | | | | | | 6442-R21D-Z | | | | | | | | | | |
| | 26-03-3221 | 6442-22-Z | | 26-03-4221 | 6442-R22-Z | | | | | | 6442-R22D-Z | | | | | | | | | | |
| | 26-03-3231 | 6442-23-Z | | 26-03-4231 | 6442-R23-Z | | | | | | 6442-R23D-Z | | | | | | | | | | |
| | 26-03-3241 | 6442-24-Z | | 26-03-4241 | 6442-R24-Z | | | | | | 6442-R24D-Z | | | | | | | | | | |
| | | 6442-15-B | 2 | 26-03-4043 | 6442-R4-C | 3 | | | | 26-03-7042 | 6442-R4D-B | 2 | | | | | | | | | |
| | | 6442-9-B | 2 | 26-03-4055 | 6442-R5-E | 5 | | | | 26-03-7072 | 6442-R7D-C | 3 | | | | | | | | | |
| | | 6442-12-F | 6 | 26-03-4065 | 6442-R6-E | 5 | | | | 26-03-7092 | 6442-R9D-B | 2 | | | | | | | | | |
| | | 6442-7-5I | 1,7 | 26-03-4086 | 6442-R8-F | 6 | | | | 26-03-7093 | 6442-R9D-E | 5 | | | | | | | | | |
| | | 6442-9-5I | 1,9 | 26-03-4097 | 6442-R9-G | 7 | | | | 26-03-7122 | 6442-R12D-E | 5 | | | | | | | | | |
| | | 6442-9-52 | 2,9 | 26-03-4108 | 6442-R10-H | 8 | | | | 26-03-7172 | 6442-R17D-E | 5 | | | | | | | | | |
| | | 6442-8-B | 2 | 26-03-4120 | 6442-R12-J | 10 | | | | | | | | | | | | | | | |
| | | 6442-8-F | 6 | 26-03-4157 | 6442-R15-G | 7 | | | | | | | | | | | | | | | |
| H | | 6442-10-D | 4 | 26-03-4073 | 6442-R7-C | 3 | | | | | | | | | | | | | | | |
| | | 6442-5-B | 2 | 26-03-4094 | 6442-R9-D | 4 | | | | | | | | | | | | | | | |
| | | 6442-10-B | 2 | 26-03-4096 | 6442-R9-F | 6 | | | | | | | | | | | | | | | |
| | | 6442-5-C | 3 | 26-03-4092 | 6442-R9-B | 2 | | | | | | | | | | | | | | | |
| | | 6442-13-B | 2 | 26-03-4064 | 6442-R6-D | 4 | | | | | | | | | | | | | | | |
| | | 6442-11-E | 5 | 26-03-4075 | 6442-R7-E | 5 | | | | | | | | | | | | | | | |
| G | | | | 26-03-4095 | 6442-R9-E | 5 | | | | | | | | | | | | | | | |
| | | | | 26-03-4085 | 6442-R8-E | 5 | | | | | | | | | | | | | | | |
| | | | | 26-03-4072 | 6442-R7-B | 2 | | | | | | | | | | | | | | | |
| | | | | 26-03-4063 | 6442-R6-C | 3 | | | | | | | | | | | | | | | |
| | | | | 26-03-4062 | 6442-R6-B | 2 | | | | | | | | | | | | | | | |
| | | | | 26-03-4125 | 6442-R12-E | 5 | | | | | | | | | | | | | | | |
| | | | | 26-03-4123 | 6442-R12-C | 3 | | | | | | | | | | | | | | | |
| | | | | 26-03-4076 | 6442-R7-F | 6 | | | | | | | | | | | | | | | |
| | | | | 26-03-4129 | 6442-R12-I | 9 | | | | | | | | | | | | | | | |
| | | | | 26-03-4143 | 6442-R14-C | 3 | | | | | | | | | | | | | | | |
| | | | | 26-03-4093 | 6442-R9-C | 3 | | | | | | | | | | | | | | | |
| | | | | 26-03-4054 | 6442-R5-D | 4 | | | | | | | | | | | | | | | |
| | | | | 26-03-4052 | 6442-R5-B | 2 | | | | | | | | | | | | | | | |
| | | | | 26-03-4103 | 6442-R10-C | 3 | | | | | | | | | | | | | | | |
| | | | | 26-03-4042 | 6442-R4-B | 2 | | | | | | | | | | | | | | | |
| | | | | 26-03-4106 | 6442-R10-F | 6 | | | | | | | | | | | | | | | |
| | | | | | 6442-R12-F | 6 | | | | | | | | | | | | | | | |
| | | | | 26-03-4112 | 6442-R11-B | 2 | | | | | | | | | | | | | | | |
| | | | | | 6442-R13-B | 2 | | | | | | | | | | | | | | | |
| | | | | 26-03-4175 | 6442-R17-E | 5 | | | | | | | | | | | | | | | |
| | | | | 26-03-4102 | 6442-R10-B | 2 | | | | | | | | | | | | | | | |
| | | | | 26-03-4032 | 6442-R3-B | 2 | | | | | | | | | | | | | | | |
| | | | | 26-03-4082 | 6442-R8-B | 2 | | | | | | | | | | | | | | | |
| | | | | | 6442-R7-5I | 1,7 | | | | | | | | | | | | | | | |
| | | | | | 6442-R9-5I | 1,9 | | | | | | | | | | | | | | | |
| | | | | 26-03-4099 | 6442-R9-52 | 2,9 | | | | | | | | | | | | | | | |
| | | | | 26-03-4149 | 6442-R14-M | 13 | | | | | | | | | | | | | | | |
| | | | | | 6442-R4-A | 1 | | | | | | | | | | | | | | | |
| | | | | 26-03-4152 | 6442-R15-N | 14 | | | | | | | | | | | | | | | |
| | | | | | 6442-R10-5I | 1,10 | | | | | | | | | | | | | | | |
| | | | | 26-03-4083 | 6442-R-08-C | 3 | | | | | | | | | | | | | | | |

| | | | | | | | | |
|-----------------------------------------------------------------------------------------|--------------------------------------|-------------------------------------------------------------------------------------------------------------------------------------------------------------|--|----------------------------------------------|--|-----------------------------------------------|----------------------|----------------------------------|
| UPDATE TITLE EC NO. UCF2009-3148 DRWNK/PPER CHKD/SSOUSEK APPR/FSM/TH | QUALITY SYMBOLS ▽=0 ▽=0 | GENERAL TOLERANCES (UNLESS SPECIFIED) mm INCH 4 PLACES # --- # --- 3 PLACES # --- # --- 2 PLACES # --- # --- 1 PLACE # --- # --- | | DIMENSION STYLE MM/IN | | SCALE --- | DESIGN UNITS INCH | THIRD ANGLE PROJECTION |
| | | ANGULAR ±1/2° | | DRAWN BY DATE POLGAR 1986/12/02 | | CHECKED BY DATE PATEL 1986/12/02 | | MATERIAL NO. SEE CHART |
| DRAFT WHERE APPLICABLE MUST REMAIN WITHIN DIMENSIONS | | APPROVED BY DATE LENZ 1986/12/02 | | MOLEX INCORPORATED | | DOCUMENT NO. SD-6442 | | SHEET NO. 3 OF 4 |