

PLEASE CHECK WWW.MOLEX.COM FOR LATEST PART INFORMATION

Part Number: **0014601210**
Status: **Active**
Description: 2.54mm (.100") Pitch SL™ Insulation Displacement Connector Assembly, Female, Single Row, Version D, Back Ribs, Wire Size 26, 3.81µm (150µ") Tin/Lead (SnPb), 21 Circuits

Documents:

[3D Model](#) [Product Specification PS-70400 \(PDF\)](#)
[Drawing \(PDF\)](#) [RoHS Certificate of Compliance \(PDF\)](#)

Agency Certification

CSA LR19980
 UL E29179

General

Product Family Ribbon Cable / Wire Trap Connectors
 Series [70400](#)
 Comments Terminals Preloaded
 Component Type Housing
 Glow-Wire Compliant No
 Product Name SL™

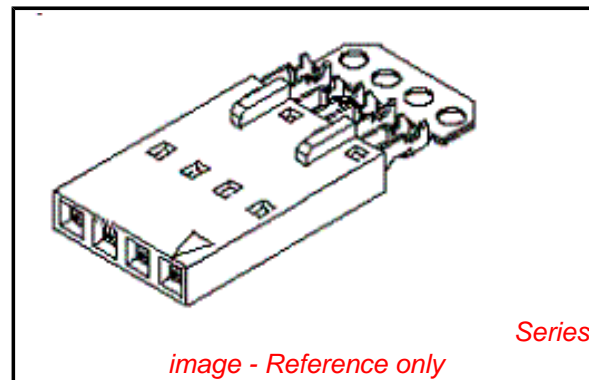
Physical

Circuits (Loaded) 21
 Color - Resin Black
 Durability (mating cycles max) 25
 Entry Angle Vertical
 Flammability 94V-0
 Lock to Mating Part None
 Material - Metal Phosphor Bronze
 Material - Plating Mating Tin
 Material - Plating Termination Tin
 Material - Resin Polyester Alloy
 Number of Rows 1
 PCB Retention None
 Packaging Type Tube
 Pitch - Mating Interface (in) 0.100 In
 Pitch - Mating Interface (mm) 2.54 mm
 Plating min: Mating (µin) 150
 Plating min: Mating (µm) 3.75
 Plating min: Termination (µin) 75
 Plating min: Termination (µm) 1.875
 Polarized to Mating Part Yes
 Stackable Yes
 Surface Mount Compatible (SMC) N/A
 Temperature Range - Operating -40°C to +105°C
 Termination Interface: Style IDT or Pierce
 Wire Insulation Diameter 1.35mm (.053") max.
 Wire Size AWG 26
 Wire/Cable Type Discrete Wire, Ribbon Cable

Electrical

Current - Maximum per Contact 1.8A
 Voltage - Maximum 250V

Material Info



EU RoHS
ELV and RoHS
Compliant
REACH SVHC
Not Reviewed
Halogen-Free
Status
Not Reviewed

China RoHS



Need more information on product environmental compliance?

Email productcompliance@molex.com
 For a multiple part number RoHS Certificate of Compliance, [click here](#)

Please visit the [Contact Us](#) section for any non-product compliance questions.

Search Parts in this Series

[70400Series](#)

Mates With

[70004](#) Interim Clip (Single Row), [70013](#) Interim Clip (Dual Row)

Use With

[7307](#) Tinned 28AWG, [7767](#) Topcoat 28AWG, [24241](#) Tinned 26AWG, [8996](#) Topcoat 26AWG, [24226](#) Tinned 24AWG, [8997](#) Topcoat 24AWG, [24369](#) High Flex 26AWG, [24389](#) High Flex 24AWG

Application Tooling | FAQ

Tooling specifications and manuals are found by selecting the products below. Crimp Height Specifications are then contained in the Application Tooling Specification document.

Global

Description	Product #
Hawk Semi-Automatice Discrete	0011201337

Reference - Drawing Numbers

Product Specification
Sales Drawing

PS-70400
SDA-70400-0246-0269

Wire Terminator for SL - Rebuilt US*	
Hawk™ Ribbon	<u>0623003000</u>
Cable Terminator for SL without Break-off	
Hawk™ Semi- Automatic Discrete	<u>0623003100</u>
Wire Terminator for SL	
Hawk™ Flat Flex	<u>0623005200</u>
Cable Terminator for SL with Break-off	
Hawk™ Ribbon	<u>0623005300</u>
Cable Terminator with for SL Break-off	
Hawk™ Semi- Automatic Discrete	<u>0623004900</u>
Wire Terminator for SL - Rebuilt CE Approved*	

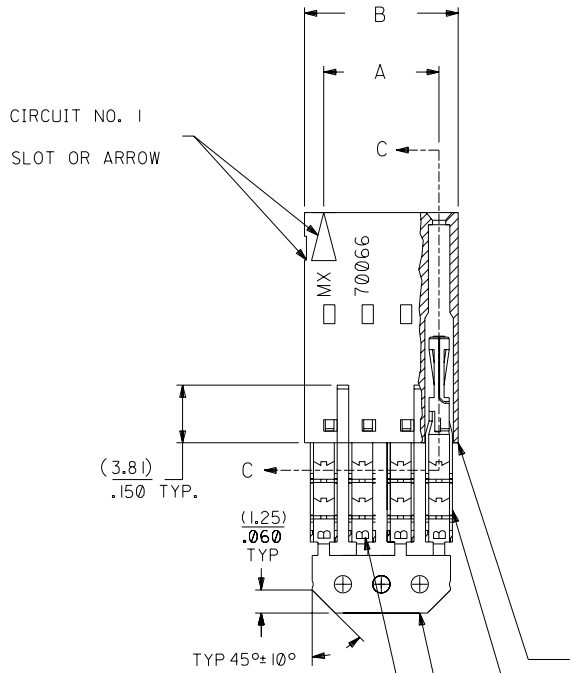
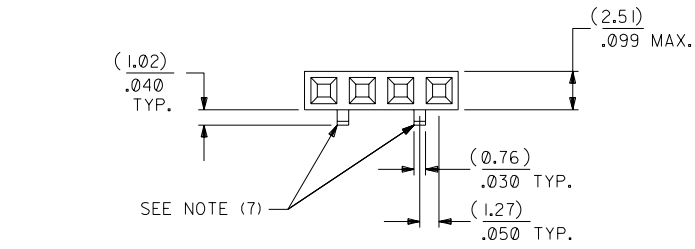
This document was generated on 03/30/2010

PLEASE CHECK WWW.MOLEX.COM FOR LATEST PART INFORMATION

OPTION D

NOTES:

- 1) TO BE USED WITH (26) AWG. STRANDED WIRE WITH (1.35)/.053 DIA. MAX. INSULATION.
- 2) SEE CHART FOR CIRCUIT SIZES.
- 3) STANDARD PACKAGING PER PK-70873-0001. OPTIONAL PACKAGING MAY BE AVAILABLE, REQUEST DWG. PK-70400
- 4) PARTS STACKABLE END TO END ON (2.54)/.100 CENTERS.
- 5) REFER TO PRODUCT SPECIFICATION: PS-70400.
- 6) SEE DWG. SDA-70400-**** (SHT. 5) FOR OPTIONAL HOUSING DETAILS.
- 7) 4 CIRCUIT SHOWN. 3 - 25 CKT'S. HAVE (2) RIBS.
- 8) TO MATE WITH MOLEX PART NO'S.: 70004-****, 70013-****
- 9) 2 CIRCUIT ASSEMBLIES SUPPLIED AS GROUPED PAIRS.



I.D. SLOT CODE TO WIRE GAUGE CHART	
I.D. SLOT CODE	WIRE GAUGE
B	26 AWG.

PLATING CODE (STRIPE ON CARRIER STRIP)	
PLATING	COLOR
TIN	NONE

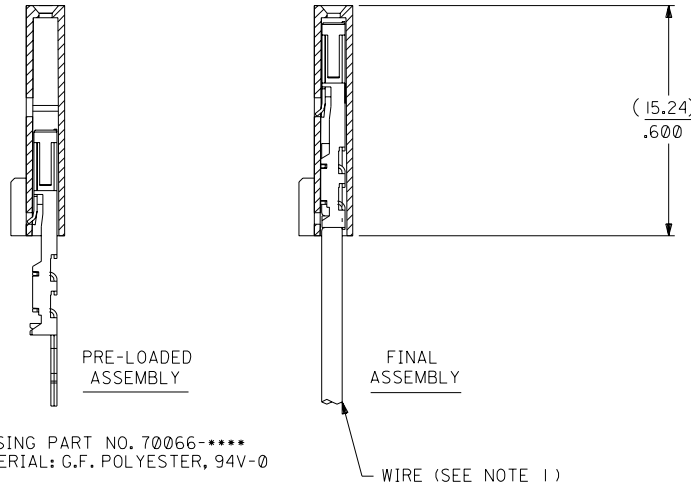
HOUSING PART NO. 70066-****
MATERIAL: G.F. POLYESTER, 94V-0

TERMINAL PART NO. 70028-****
MATERIAL: PHOSPHOR BRONZE
PLATING PER ES-88-***

TIN - .000150 MIN. TIN OVER
.000050 MIN. NICKEL PLATE.



SECTION C-C



CKT. SIZE	A	B	EDP. NO.	ENG. NO.
2	(2.54) .100	(5.05) .199	14-60-1020	A-70400-0246
3	(5.08) .200	(7.59) .299	14-60-1030	A-70400-0247
4	(7.62) .300	(10.13) .399	14-60-1040	A-70400-0248
5	(10.16) .400	(12.67) .499	14-60-1050	A-70400-0249
6	(12.70) .500	(15.21) .599	14-60-1060	A-70400-0250
7	(15.24) .600	(17.75) .699	14-60-1070	A-70400-0251
8	(17.78) .700	(20.29) .799	14-60-1080	A-70400-0252
9	(20.32) .800	(22.83) .899	14-60-1090	A-70400-0253
10	(22.86) .900	(25.37) .999	14-60-1100	A-70400-0254
11	(25.54) 1.000	(27.91) 1.099	14-60-1110	A-70400-0255
12	(27.94) 1.100	(30.45) 1.199	14-60-1120	A-70400-0256
13	(30.48) 1.200	(32.99) 1.299	14-60-1130	A-70400-0257
14	(33.02) 1.300	(35.53) 1.399	14-60-1140	A-70400-0258
15	(35.56) 1.400	(38.07) 1.499	14-60-1150	A-70400-0259
16	(38.01) 1.500	(40.61) 1.599	14-60-1160	A-70400-0260
17	(40.64) 1.600	(43.15) 1.699	14-60-1170	A-70400-0261
18	(43.18) 1.700	(45.69) 1.799	14-60-1180	A-70400-0262
19	(45.72) 1.800	(48.23) 1.899	14-60-1190	A-70400-0263
20	(48.26) 1.900	(50.77) 1.999	14-60-1200	A-70400-0264
21	(50.80) 2.000	(53.31) 2.099	14-60-1210	A-70400-0265
22	(53.34) 2.100	(55.85) 2.199	14-60-1220	A-70400-0266
23	(55.88) 2.200	(58.39) 2.299	14-60-1230	A-70400-0267
24	(58.42) 2.300	(60.93) 2.399	14-60-1240	A-70400-0268
25	(60.96) 2.400	(63.47) 2.499	14-60-1250	A-70400-0269

*THE PRIMARY SHIPPING CARTON WILL BE LABELED "COMPLIANT TO ROHS DIRECTIVE 2002/95/EC AND ELV ANNEX II OF DIRECTIVE 2000/53/EC". CARTONS WITHOUT THIS LABEL MAY CONTAIN PRODUCT WITH LEAD.

F	LEAD FREE UCP2004-1769 RWHITE 04/03/17	D	REVISED PER ECR NO. U82110 10-17-88 AAB	DIMENSIONS SHOWN (METRIC) INCH UNLESS OTHERWISE SPECIFIED TOLERANCES: ANGULAR ± 1/2°		▽ = 0 ▼ = 0 REVISE ONLY ON CAD SYSTEM																									
EI	ADD CARRIER CHAMF ECN #UDT1998-0280 05/20/98 LMCGRATH	C	REVISE PER ECR #U80110 2/3/88 MJM	<table border="1"> <thead> <tr> <th colspan="2">INCH</th> <th colspan="2">METRIC</th> </tr> </thead> <tbody> <tr> <td>3 PLACE</td> <td>± .010</td> <td colspan="2">---</td> </tr> <tr> <td>2 PLACE</td> <td>± .014</td> <td colspan="2">± 0.25</td> </tr> <tr> <td>1 PLACE</td> <td>---</td> <td colspan="2">± 0.35</td> </tr> </tbody> </table>		INCH		METRIC		3 PLACE	± .010	---		2 PLACE	± .014	± 0.25		1 PLACE	---	± 0.35		<table border="1"> <tr> <td colspan="2">TITLE</td> <td colspan="2">ASSEMBLY, SL CONNECTOR (SINGLE ROW- (2.54)/.100 GRID)</td> </tr> <tr> <td colspan="2">MFG. SH. REV.</td> <td colspan="2">10/09/84</td> </tr> </table>		TITLE		ASSEMBLY, SL CONNECTOR (SINGLE ROW- (2.54)/.100 GRID)		MFG. SH. REV.		10/09/84	
INCH		METRIC																													
3 PLACE	± .010	---																													
2 PLACE	± .014	± 0.25																													
1 PLACE	---	± 0.35																													
TITLE		ASSEMBLY, SL CONNECTOR (SINGLE ROW- (2.54)/.100 GRID)																													
MFG. SH. REV.		10/09/84																													
E	164 PLATING WAS 102 PER ECR # U30941 07/13/93 REED	B	REDRAWN ON CAD ECR# 8842 5/8/86 W.Z.	<table border="1"> <tr> <td>DRWG. BY</td> <td>WAZ</td> <td>CHK'D. BY</td> <td>WAZ</td> </tr> <tr> <td>APP'D. BY</td> <td></td> <td>SCALE</td> <td>4 : 1</td> </tr> </table>		DRWG. BY	WAZ	CHK'D. BY	WAZ	APP'D. BY		SCALE	4 : 1	<table border="1"> <tr> <td colspan="2">PART NO.</td> <td colspan="2">SDA-70400-0246-0269</td> </tr> <tr> <td colspan="2">SEE CHART</td> <td colspan="2"></td> </tr> <tr> <td colspan="2">FILE NAME</td> <td colspan="2">570400DX2</td> </tr> <tr> <td colspan="4">THIS DRAWING CONTAINS INFORMATION THAT IS PROPRIETARY TO MOLEX INC. AND SHOULD NOT BE USED WITHOUT WRITTEN PERMISSION.</td> </tr> </table>		PART NO.		SDA-70400-0246-0269		SEE CHART				FILE NAME		570400DX2		THIS DRAWING CONTAINS INFORMATION THAT IS PROPRIETARY TO MOLEX INC. AND SHOULD NOT BE USED WITHOUT WRITTEN PERMISSION.			
DRWG. BY	WAZ	CHK'D. BY	WAZ																												
APP'D. BY		SCALE	4 : 1																												
PART NO.		SDA-70400-0246-0269																													
SEE CHART																															
FILE NAME		570400DX2																													
THIS DRAWING CONTAINS INFORMATION THAT IS PROPRIETARY TO MOLEX INC. AND SHOULD NOT BE USED WITHOUT WRITTEN PERMISSION.																															
LTR.	REVISIONS	LTR.	REVISIONS	<table border="1"> <tr> <td>MOLEX INCORPORATED</td> <td>SHEET NO.</td> <td>DATE</td> </tr> <tr> <td>LITSE,ILL.</td> <td>60532</td> <td>10/09/84</td> </tr> </table>				MOLEX INCORPORATED	SHEET NO.	DATE	LITSE,ILL.	60532	10/09/84																		
MOLEX INCORPORATED	SHEET NO.	DATE																													
LITSE,ILL.	60532	10/09/84																													