

KS SERIES KEY SWITCHES

New!

FEATURES

- Single pole single throw momentary action.
- Excellent tactile feed-back (Snap dome).
- Compact size.
- Long operating life for high reliability.
- Available in choice of 7 cosmetic colors.
- Textured actuator surface for non-slip operation.
- Molded-in terminals minimize wicking of flux or solder.

MATERIALS

Base: ABS 777, color white.
 Actuator: Polycarbonate, 7 optional colors (see model tabulations).
 Terminals: Silver plated brass.
 Shorting Contact: Silver plated phosphor bronze.

GENERAL SPECIFICATIONS

ELECTRICALS

Contact rating: 10 mA @ 35 VDC
 Insulation resistance: 100 megohms min. (500 VDC)
 Dielectric withstanding voltage: 500 VAC for 1 minute
 Contact resistance: < 20 milliohms
 Electrical life: 100,000 cycles min.
 Contact bounce: less than 10 msec.

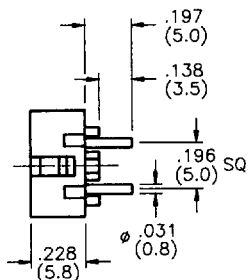
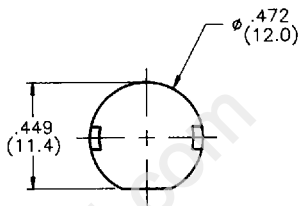
MECHANICALS, THERMALS

Plunger travel: .031" (0.8mm)
 Actuation force: 130 grams ± 30 grams
 Operating temperature range: -20°C to +65°C

SOLDERING

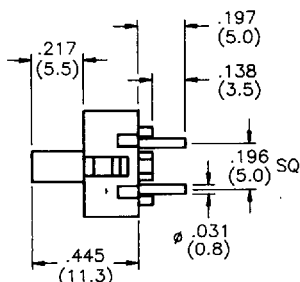
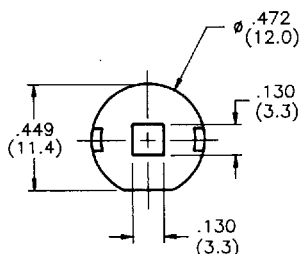
Wave or hand soldering: 235°C max. for 5 seconds max..
 Solvent washing: Non-washable.

KSL

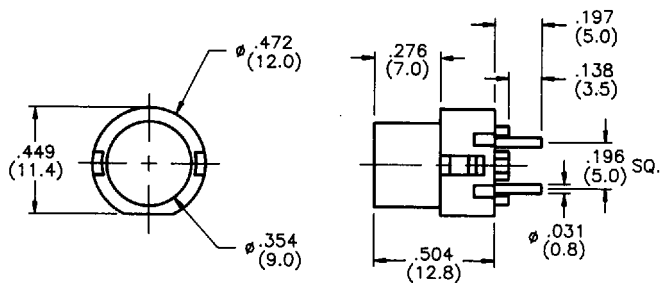


Model No.	Actuator Color
KSL1	Blue
KSL2	Black
KSL3	Green
KSL4	Gray
KSL5	Yellow
KSL6	Red
KSL8	White

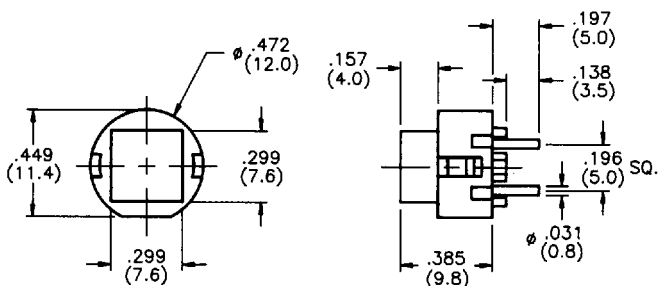
KSP



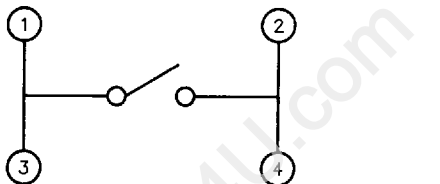
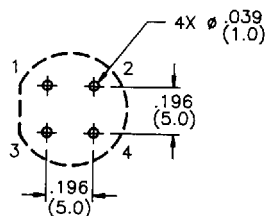
Model No.	Actuator Color
KSP1	Blue
KSP2	Black
KSP3	Green
KSP4	Gray
KSP5	Yellow
KSP6	Red
KSP8	White

KSR

Model No.	Actuator Color
KSR1	Blue
KSR2	Black
KSR3	Green
KSR4	Gray
KSR5	Yellow
KSR6	Red
KSR8	White

KSS

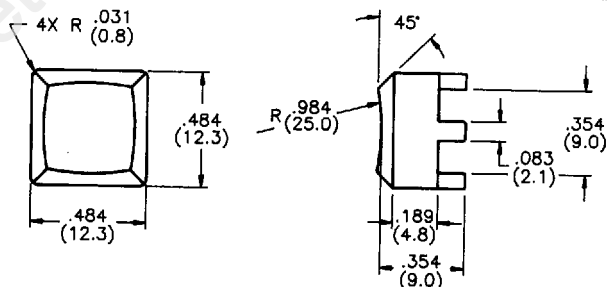
Model No.	Actuator Color
KSS1	Blue
KSS2	Black
KSS3	Green
KSS4	Gray
KSS5	Yellow
KSS6	Red
KSS8	White

SCHEMATIC (ALL MODELS)**PRINTED CIRCUIT BOARD LAYOUT (ALL MODELS)**

Tolerances:
 Linear, $\pm .004$
 Holes, $+.004/- .000$

KEY SWITCH CAPS

Material: ABS thermoplastic



Caps are supplied without marking.
 Consult factory for custom marking requirements.

Model No.	Cap Color
K1	Blue
K2	Black
K3	Green
K4	Gray
K5	Yellow
K6	Red
K8	White

(Fits KSL & KSS models only)