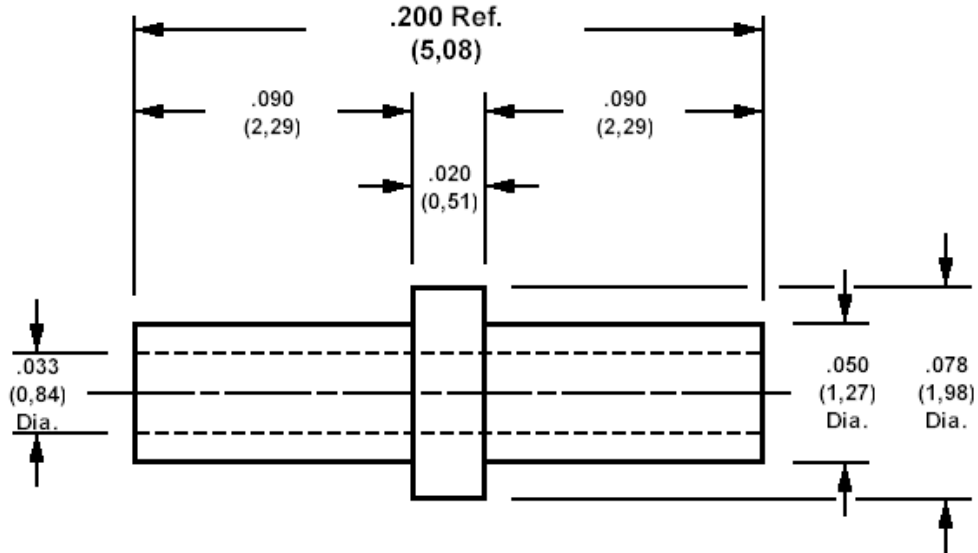


180-1461 Solder terminal, eyelet, thru hole

Recommended mounting hole .055 (1,40), #54 drill



For Board Thickness .062 (1,59), for 22-21 AWG wire

How to order code

180-1461-02-YY-00

Basic Part No YY = Plating Finish

MATERIALS		
Component	Material	Finish (YY)
		-05
Terminal	Brass	Electro Solder

SWAGE TOOLING	
Recommended Swaging Tools:-	
Anvil	435-6443-03-00-00
Flare Punch	435-6642-03-00-00