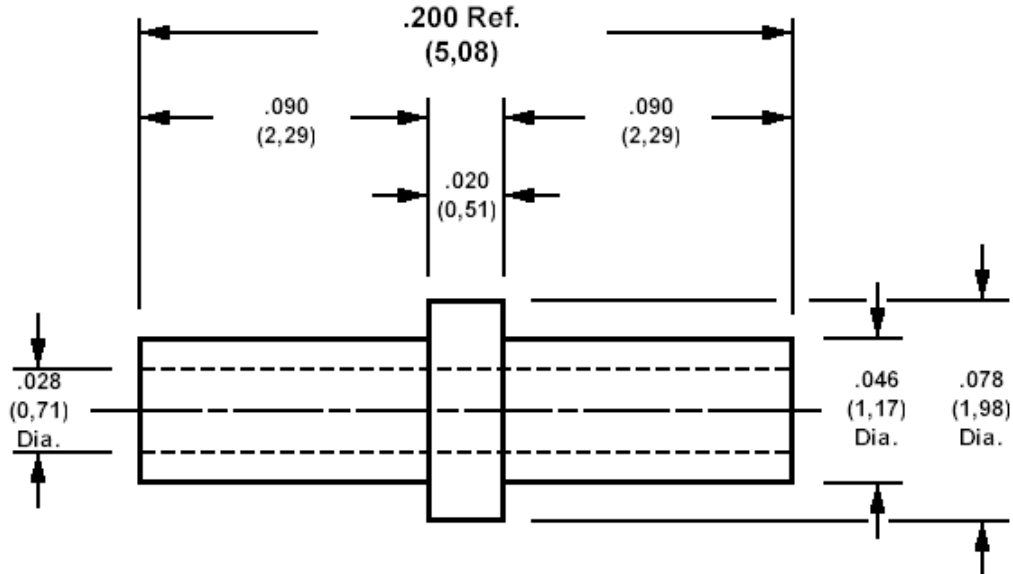


**180-1460 Solder terminal, eyelet, thru hole**

Recommended mounting hole .052 (1,32), #55 drill



For Board Thickness .062 (1,59) for 24-23 AWG wire

**How to order code**

**180-1460-02-YY-00**

Basic Part No YY = Plating Finish

MATERIALS		
Component	Material	Finish (YY)
Terminal	Brass	-05 Electro Solder

SWAGE TOOLING	
Recommended Swaging Tools:-	
Anvil	435-6443-02-00-00
Flare Punch	435-6642-02-00-00