

PLEASE CHECK WWW.MOLEX.COM FOR LATEST PART INFORMATION

Part Number: [0493580610](#)
Status: **Active**
Description: 0.25mm (.009") Pitch Wire-to-Wire Female Housing Assembly 6 Circuits

Documents:

[Drawing \(PDF\)](#) [RoHS Certificate of Compliance \(PDF\)](#)
[Product Specification PS-49358-001 \(PDF\)](#)

General

Product Family Crimp Housings
 Series [49358](#)
 Product Name N/A

Physical

Circuits Detail Polarized to mating part
 Color - Resin Natural
 Gender Female
 Glow-Wire Compliant No
 Keying to Mating Part N/A
 Lock to Mating Part Yes
 Material - Resin Polyester
 Number of Rows 2
 Packaging Type Bag
 Panel Mount No
 Pitch - Mating Interface (in) 0.354 In
 Pitch - Mating Interface (mm) 9.00 mm
 Pitch - Term. Interface (in) 0.531 In
 Pitch - Term. Interface (mm) 13.50 mm
 Polarized to Mating Part Yes
 Ports 6
 Stackable No
 Temperature Range - Operating -40°C to +85°C

Electrical

Current - Maximum per Contact 6A

Material Info

Reference - Drawing Numbers

Product Specification PS-49358-001
 Sales Drawing SD-49358-001

EU RoHS

ELV and RoHS Compliant

REACH SVHC

Not Reviewed

Halogen-Free

Status

Halogen-Free

China RoHS



Need more information on product environmental compliance?

Email productcompliance@molex.com
 For a multiple part number RoHS Certificate of Compliance, [click here](#)

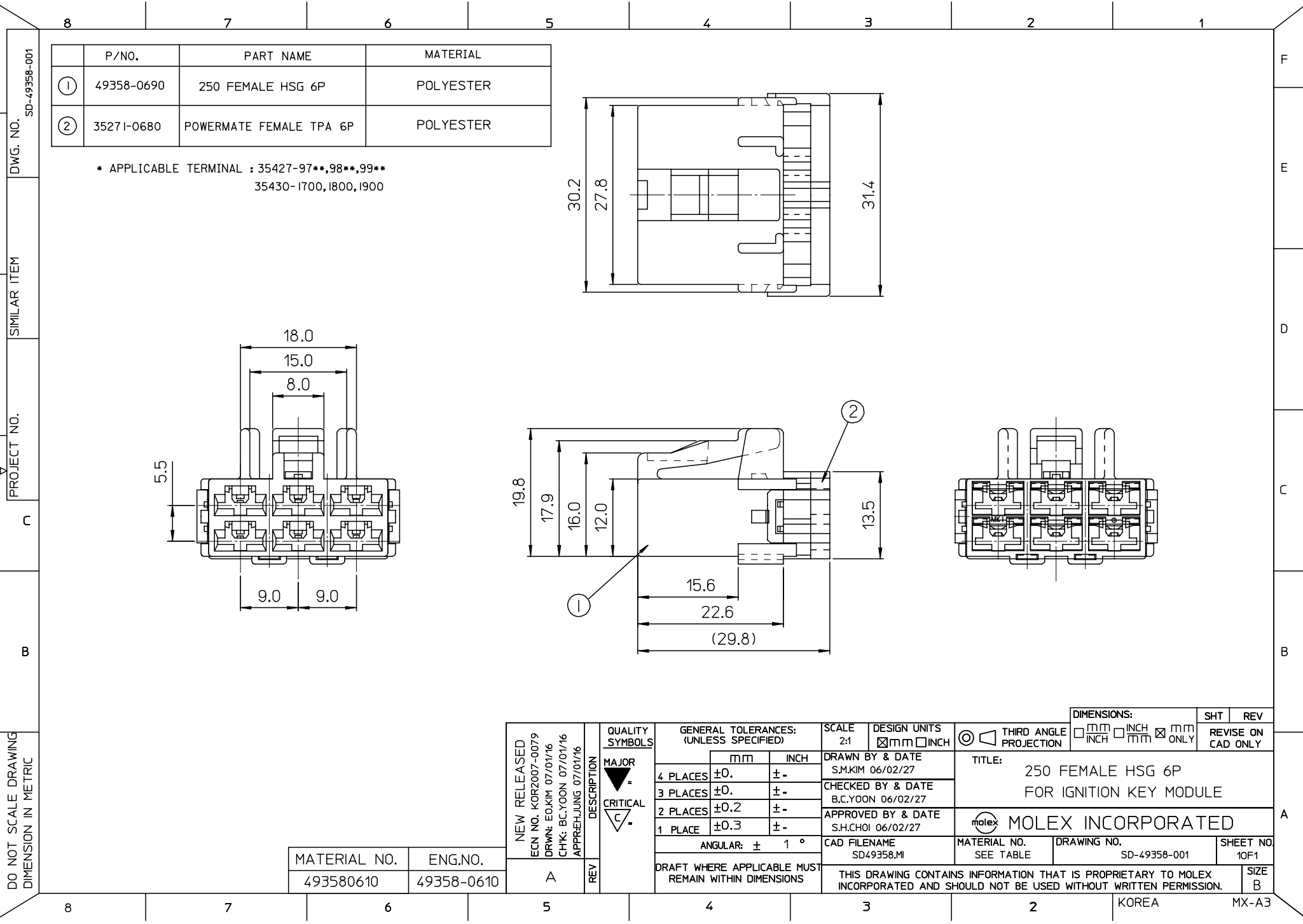
Please visit the [Contact Us](#) section for any non-product compliance questions.

Search Parts in this Series

[49358Series](#)

Use With

Wire-to-Wire Terminal [35427](#) , [35430](#)



	P/NO.	PART NAME	MATERIAL
①	49358-0690	250 FEMALE HSG 6P	POLYESTER
②	35271-0680	POWERMATE FEMALE TPA 6P	POLYESTER

* APPLICABLE TERMINAL : 35427-97**,98**,99**
35430-1700,1800,1900

DWG. NO. SD-49358-001
 PROJECT NO.
 SIMILAR ITEM
 DO NOT SCALE DRAWING DIMENSION IN METRIC

MATERIAL NO.	ENG.NO.
493580610	49358-0610

NEW RELEASED
 ECN NO. KOR2007-0079
 DRWN: E0.KIM 07/01/16
 CHK: B.C.YOON 07/01/16
 APPR: HJUNG 07/01/16

QUALITY SYMBOLS	GENERAL TOLERANCES: (UNLESS SPECIFIED)	
	mm	INCH
MAJOR	4 PLACES ±0.	±-
CRITICAL	3 PLACES ±0.	±-
	2 PLACES ±0.2	±-
	1 PLACE ±0.3	±-
	ANGULAR: ± 1 °	

SCALE 2:1	DESIGN UNITS <input checked="" type="checkbox"/> mm <input type="checkbox"/> INCH
DRAWN BY & DATE S.M.KIM 06/02/27	
CHECKED BY & DATE B.C.YOON 06/02/27	
APPROVED BY & DATE S.H.CHOI 06/02/27	
CAD FILENAME SD49358.MI	

DIMENSIONS: <input type="checkbox"/> mm <input type="checkbox"/> INCH <input checked="" type="checkbox"/> mm ONLY		SHT	REV
THIRD ANGLE PROJECTION		REVISE ON CAD ONLY	
TITLE: 250 FEMALE HSG 6P FOR IGNITION KEY MODULE			
MOLEX INCORPORATED			
MATERIAL NO. SEE TABLE	DRAWING NO. SD-49358-001	SHEET NO. 10F1	
THIS DRAWING CONTAINS INFORMATION THAT IS PROPRIETARY TO MOLEX INCORPORATED AND SHOULD NOT BE USED WITHOUT WRITTEN PERMISSION.			SIZE B