

**PLEASE CHECK WWW.MOLEX.COM FOR LATEST PART INFORMATION**

**Part Number:** [0879370802](#)  
**Status:** **Active**  
**Overview:** [kk](#)  
**Description:** 2.54mm (.100") Pitch KK® Header, Single Row Dual Body, Through Hole, Vertical, 8 Circuits, 2.50µm (100µ") Tin (Sn) Plating, 11.00mm (.433") Stacking Height, Tray Packaging, Lead-free

**Documents:**

[3D Model](#) [Product Specification PS-87920-019 \(PDF\)](#)  
[Drawing \(PDF\)](#) [RoHS Certificate of Compliance \(PDF\)](#)

**Agency Certification**

UL E29179

**General**

Product Family PCB Headers  
 Series [87937](#)  
 Application Board-to-Board, Wire-to-Board  
 Overview [kk](#)  
 Product Name Dual Body, KK®

**Physical**

Breakaway Yes  
 Circuits (Loaded) 8  
 Circuits (maximum) 8  
 Color - Resin Black  
 First Mate / Last Break No  
 Flammability 94V-0  
 Glow-Wire Compliant No  
 Guide to Mating Part No  
 Keying to Mating Part None  
 Lock to Mating Part None  
 Mated Height (in) 0.149 In  
 Mated Height (mm) 3.78 mm  
 Material - Metal Copper Alloy  
 Material - Plating Mating Tin  
 Material - Plating Termination Nickel  
 Material - Resin Nylon  
 Number of Rows 1  
 Orientation Vertical  
 PC Tail Length (in) 0.148 In  
 PC Tail Length (mm) 3.76 mm  
 PCB Locator No  
 PCB Retention None  
 PCB Thickness Recommended (in) 0.062 In  
 PCB Thickness Recommended (mm) 1.60 mm  
 Packaging Type Tray  
 Pitch - Mating Interface (in) 0.100 In  
 Pitch - Mating Interface (mm) 2.54 mm  
 Pitch - Term. Interface (in) 0.100 In  
 Pitch - Term. Interface (mm) 2.54 mm  
 Plating min: Mating (µin) 100  
 Plating min: Mating (µm) 2.50  
 Plating min: Termination (µin) 50  
 Plating min: Termination (µm) 1.25  
 Polarized to Mating Part No

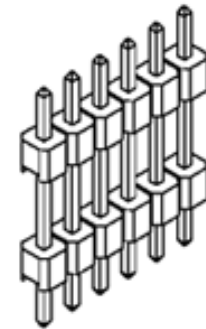


image - Reference only

Series

**EU RoHS**

**ELV and RoHS Compliant**  
**REACH SVHC**  
 Not Reviewed  
**Halogen-Free Status**  
**Not Reviewed**

**China RoHS**



**Need more information on product environmental compliance?**

Email [productcompliance@molex.com](mailto:productcompliance@molex.com)  
 For a multiple part number RoHS Certificate of Compliance, [click here](#)

Please visit the [Contact Us](#) section for any non-product compliance questions.

**Search Parts in this Series**

[87937Series](#)

**Mates With**

KK® PCB Receptacles [4455](#). SL™ IDT Housings [70430](#) , [7720](#), [70400](#). C-Grid® PCB Receptacles [90147](#), [90148](#)

|                                |                 |
|--------------------------------|-----------------|
| Polarized to PCB               | No              |
| Shrouded                       | No              |
| Stackable                      | No              |
| Surface Mount Compatible (SMC) | Yes             |
| Temperature Range - Operating  | -55°C to +105°C |
| Termination Interface: Style   | Through Hole    |

#### **Electrical**

|                               |      |
|-------------------------------|------|
| Current - Maximum per Contact | 3A   |
| Voltage - Maximum             | 250V |

#### **Solder Process Data**

|  |                        |
|--|------------------------|
| Duration at Max. Process Temperature (seconds) | 14                     |
| Lead-free Process Capability                   | Wave Capable (TH only) |
| Max. Cycles at Max. Process Temperature        | 1                      |
| Process Temperature max. C                     | 265                    |

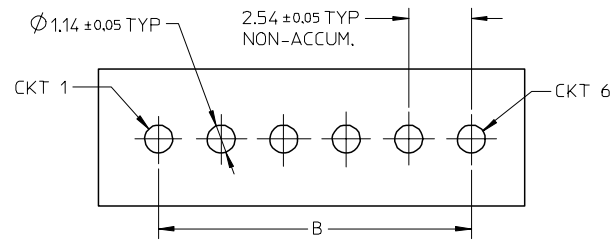
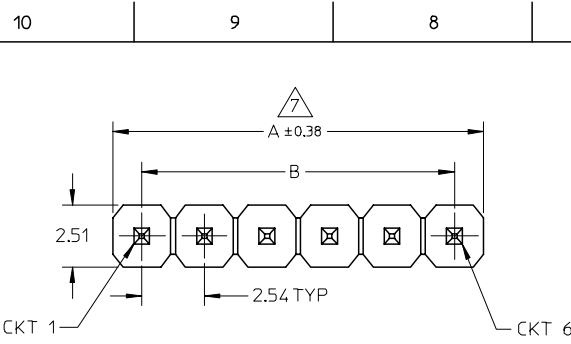
#### **Material Info**

#### **Reference - Drawing Numbers**

|                         |              |
|-------------------------|--------------|
| Packaging Specification | PK-89990-489 |
| Product Specification   | PS-87920-019 |
| Sales Drawing           | SD-87937-002 |

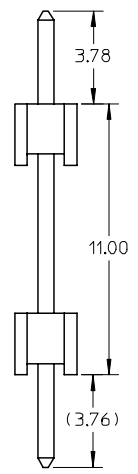
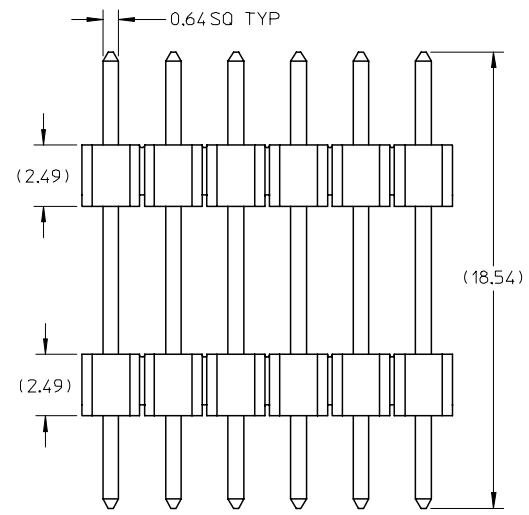
This document was generated on 05/26/2010

**PLEASE CHECK [WWW.MOLEX.COM](http://WWW.MOLEX.COM) FOR LATEST PART INFORMATION**

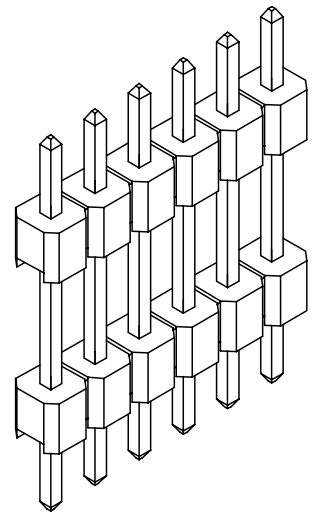


RECOMMENDED P.C.B HOLE LAYOUT

| PART NO IN TRAY | CKT SIZE | DIMENSION |       |
|-----------------|----------|-----------|-------|
|                 |          | A         | B     |
| 87937-0106      | 1        | 2.54      | ----- |
| 87937-0406      | 4        | 10.16     | 7.62  |
| 87937-0502      | 5        | 12.70     | 10.16 |
| 87937-0802      | 8        | 20.32     | 17.78 |
| 87937-1206      | 12       | 30.48     | 27.94 |



- NOTES:
- MATERIAL:  
HOUSING: 30% G.F. POLYESTER, UL94V-0,  
COLOR: BLACK  
TERMINAL: COPPER ALLOY
  - PLATING TYPE:  
(6) : 100 MICRO INCHES MIN. TIN IN SELECTED AREA OVER  
50 MICRO INCHES MIN. NICKEL OVERALL.
  - PIN PUSHOUT FORCE: 1KG MIN IN EITHER DIRECTION
  - PACKAGING SPECIFICATION: PK-89990-489
  - THE ABOVE 6 CKT IS FOR ILLUSTRATION PURPOSE ONLY.
  - PART TO BE PACK IN TRAY.
  - IRREGULAR CIRCUIT CUTOFF WITHIN BREAKAWAY SECTION IS PERMISSIBLE. CUTTING OR CHIPPING OF THE MAIN BODY IS NOT ACCEPTABLE.



| EC NO: S2007-0132<br>DRWN:SKLIM01 2006/08/17<br>CHKD:CLAM 2006/08/18<br>APPR:PATEY 2006/08/22 | QUALITY SYMBOLS  | GENERAL TOLERANCES (UNLESS SPECIFIED)  | DIMENSION STYLE   | SCALE | DESIGN UNITS | THIRD ANGLE PROJECTION   |          |       |          |       |            |   |         |       |         |            |                    |             |      |        |            |  |  |              |              |           |  |              |        |
|---|--|--|---|-------|--------------|--|----------|-------|----------|-------|------------|---|---------|-------|---------|------------|--------------------|-------------|------|--------|------------|--|--|--------------|--------------|-----------|--|--------------|--------|
|   | $\nabla=0$<br>$\triangle=0$  | <table border="1"> <thead> <tr> <th></th> <th>mm</th> <th>INCH</th> </tr> </thead> <tbody> <tr> <td>4 PLACES</td> <td>± ---</td> <td>± ---</td> </tr> <tr> <td>3 PLACES</td> <td>± ---</td> <td>± ---</td> </tr> <tr> <td>2 PLACES</td> <td>± 0.20</td> <td>± ---</td> </tr> <tr> <td>1 PLACE</td> <td>± ---</td> <td>± ---</td> </tr> </tbody> </table> |   | mm    | INCH         | 4 PLACES   | ± ---    | ± --- | 3 PLACES | ± --- | ± ---      | 2 PLACES  | ± 0.20  | ± --- | 1 PLACE | ± ---      | ± ---              | MM ONLY     | NTS  | METRIC |            |  |  |              |              |           |  |              |        |
|   |  | mm   | INCH  |       |              |  |          |       |          |       |            |   |         |       |         |            |                    |             |      |        |            |  |  |              |              |           |  |              |        |
|   | 4 PLACES   | ± ---  | ± ---   |       |              |  |          |       |          |       |            |   |         |       |         |            |                    |             |      |        |            |  |  |              |              |           |  |              |        |
| 3 PLACES  | ± ---  | ± ---  |   |       |              |  |          |       |          |       |            |   |         |       |         |            |                    |             |      |        |            |  |  |              |              |           |  |              |        |
| 2 PLACES  | ± 0.20   | ± ---  |   |       |              |  |          |       |          |       |            |   |         |       |         |            |                    |             |      |        |            |  |  |              |              |           |  |              |        |
| 1 PLACE   | ± ---  | ± ---  |   |       |              |  |          |       |          |       |            |   |         |       |         |            |                    |             |      |        |            |  |  |              |              |           |  |              |        |
| DESCRIPTION   | <table border="1"> <thead> <tr> <th>REV</th> <th>DESCRIPTION</th> </tr> </thead> <tbody> <tr> <td>B</td> <td></td> </tr> </tbody> </table> | REV  | DESCRIPTION   | B     |              | <table border="1"> <thead> <tr> <th>DRAWN BY</th> <th>DATE</th> <th>TITLE</th> </tr> </thead> <tbody> <tr> <td>KCHO</td> <td>2005/05/25</td> <td rowspan="2">CUSTOM HEADER<br/>C-GRID SINGLE ROW HEADER<br/>DUAL WAFER TROUGH HOLE</td> </tr> <tr> <td>CHKD BY</td> <td>DATE</td> </tr> <tr> <td>BOKOK</td> <td>2005/06/13</td> <td rowspan="2">MOLEX INCORPORATED</td> </tr> <tr> <td>APPROVED BY</td> <td>DATE</td> </tr> <tr> <td>PTL IM</td> <td>2005/06/13</td> <td></td> </tr> </tbody> </table> | DRAWN BY | DATE  | TITLE    | KCHO  | 2005/05/25 | CUSTOM HEADER<br>C-GRID SINGLE ROW HEADER<br>DUAL WAFER TROUGH HOLE | CHKD BY | DATE  | BOKOK   | 2005/06/13 | MOLEX INCORPORATED | APPROVED BY | DATE | PTL IM | 2005/06/13 |  | <table border="1"> <thead> <tr> <th>MATERIAL NO.</th> <th>DOCUMENT NO.</th> <th>SHEET NO.</th> </tr> </thead> <tbody> <tr> <td></td> <td>SD-87937-002</td> <td>1 OF 1</td> </tr> </tbody> </table> | MATERIAL NO. | DOCUMENT NO. | SHEET NO. |  | SD-87937-002 | 1 OF 1 |
| REV   | DESCRIPTION  |  |   |       |              |  |          |       |          |       |            |   |         |       |         |            |                    |             |      |        |            |  |  |              |              |           |  |              |        |
| B   |  |  |   |       |              |  |          |       |          |       |            |   |         |       |         |            |                    |             |      |        |            |  |  |              |              |           |  |              |        |
| DRAWN BY  | DATE   | TITLE  |   |       |              |  |          |       |          |       |            |   |         |       |         |            |                    |             |      |        |            |  |  |              |              |           |  |              |        |
| KCHO  | 2005/05/25   | CUSTOM HEADER<br>C-GRID SINGLE ROW HEADER<br>DUAL WAFER TROUGH HOLE  |   |       |              |  |          |       |          |       |            |   |         |       |         |            |                    |             |      |        |            |  |  |              |              |           |  |              |        |
| CHKD BY   | DATE   |  |   |       |              |  |          |       |          |       |            |   |         |       |         |            |                    |             |      |        |            |  |  |              |              |           |  |              |        |
| BOKOK   | 2005/06/13   | MOLEX INCORPORATED   |   |       |              |  |          |       |          |       |            |   |         |       |         |            |                    |             |      |        |            |  |  |              |              |           |  |              |        |
| APPROVED BY   | DATE   |  |   |       |              |  |          |       |          |       |            |   |         |       |         |            |                    |             |      |        |            |  |  |              |              |           |  |              |        |
| PTL IM  | 2005/06/13   |  |   |       |              |  |          |       |          |       |            |   |         |       |         |            |                    |             |      |        |            |  |  |              |              |           |  |              |        |
| MATERIAL NO.  | DOCUMENT NO.   | SHEET NO.  |   |       |              |  |          |       |          |       |            |   |         |       |         |            |                    |             |      |        |            |  |  |              |              |           |  |              |        |
|   | SD-87937-002   | 1 OF 1   |   |       |              |  |          |       |          |       |            |   |         |       |         |            |                    |             |      |        |            |  |  |              |              |           |  |              |        |
|   | DRAFT WHERE APPLICABLE MUST REMAIN WITHIN DIMENSIONS   | SEE TABLE  | THIS DRAWING CONTAINS INFORMATION THAT IS PROPRIETARY TO MOLEX INCORPORATED AND SHOULD NOT BE USED WITHOUT WRITTEN PERMISSION |       |              |  |          |       |          |       |            |   |         |       |         |            |                    |             |      |        |            |  |  |              |              |           |  |              |        |