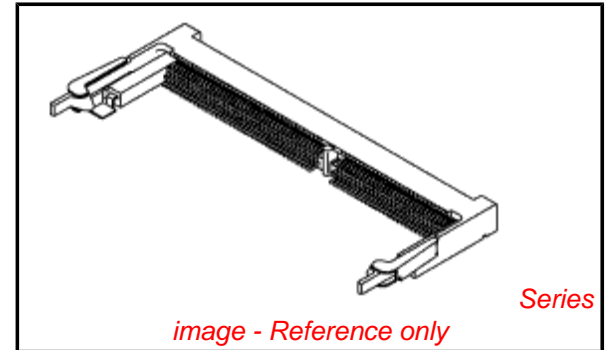


**PLEASE CHECK WWW.MOLEX.COM FOR LATEST PART INFORMATION**

**Part Number:** **0781521443**  
**Status:** **Active**  
**Description:** 0.80mm(.032") Pitch SODIMM Socket, Right Angle, SMT, 0.25µm (10µ") Gold (Au) Plating, Mounted Height 5.2mm (.205"), 3.3V Power Supply, with Pegs, 144 Circuits, Lead free

**Documents:**

[3D Model](#) [Product Specification PS-78152-003 \(PDF\)](#)  
[Drawing \(PDF\)](#) [RoHS Certificate of Compliance \(PDF\)](#)



**General**

Product Family	Memory Module Sockets
Series	<u>78152</u>
Comments	3.3V Power Supply
Component Type	Socket
JEDEC Outline	MO-237
Product Name	S.O. DIMM

**Physical**

Circuits (Loaded)	144
Color - Resin	White
Durability (mating cycles max)	30
Entry Angle	Side Entry
Keying to Mating Part	Yes
Material - Metal	Brass, Phosphor Bronze
Material - Plating Mating	Gold
Material - Plating Termination	Tin
Material - Resin	High Temperature Thermoplastic
PCB Locator	Yes
PCB Retention	Yes
PCB Thickness Recommended (in)	0.047 In
PCB Thickness Recommended (mm)	1.20 mm
Packaging Type	Tray
Pitch - Mating Interface (in)	0.032 In
Pitch - Mating Interface (mm)	0.80 mm
Plating min: Mating (µin)	10
Plating min: Mating (µm)	0.25
Plating min: Termination (µin)	40
Plating min: Termination (µm)	1
Temperature Range - Operating	-55°C to +85°C
Termination Interface: Style	Surface Mount

**Electrical**

Current - Maximum per Contact	0.3A
Voltage - Maximum	100V AC (RMS)/DC
Voltage Key	3.3V

**Solder Process Data**

Duration at Max. Process Temperature (seconds)	10
Lead-free Process Capability	Reflow Capable (SMT only)
Max. Cycles at Max. Process Temperature	3
Process Temperature max. C	260

**Material Info**

**Reference - Drawing Numbers**

Product Specification	PS-78152-003
-----------------------	--------------

**EU RoHS**

**ELV and RoHS Compliant**  
**REACH SVHC**  
 Not Reviewed  
**Halogen-Free Status**  
 Not Reviewed

**China RoHS**



**Need more information on product environmental compliance?**

Email [productcompliance@molex.com](mailto:productcompliance@molex.com)  
 For a multiple part number RoHS Certificate of Compliance, [click here](#)

Please visit the [Contact Us](#) section for any non-product compliance questions.

**Search Parts in this Series**

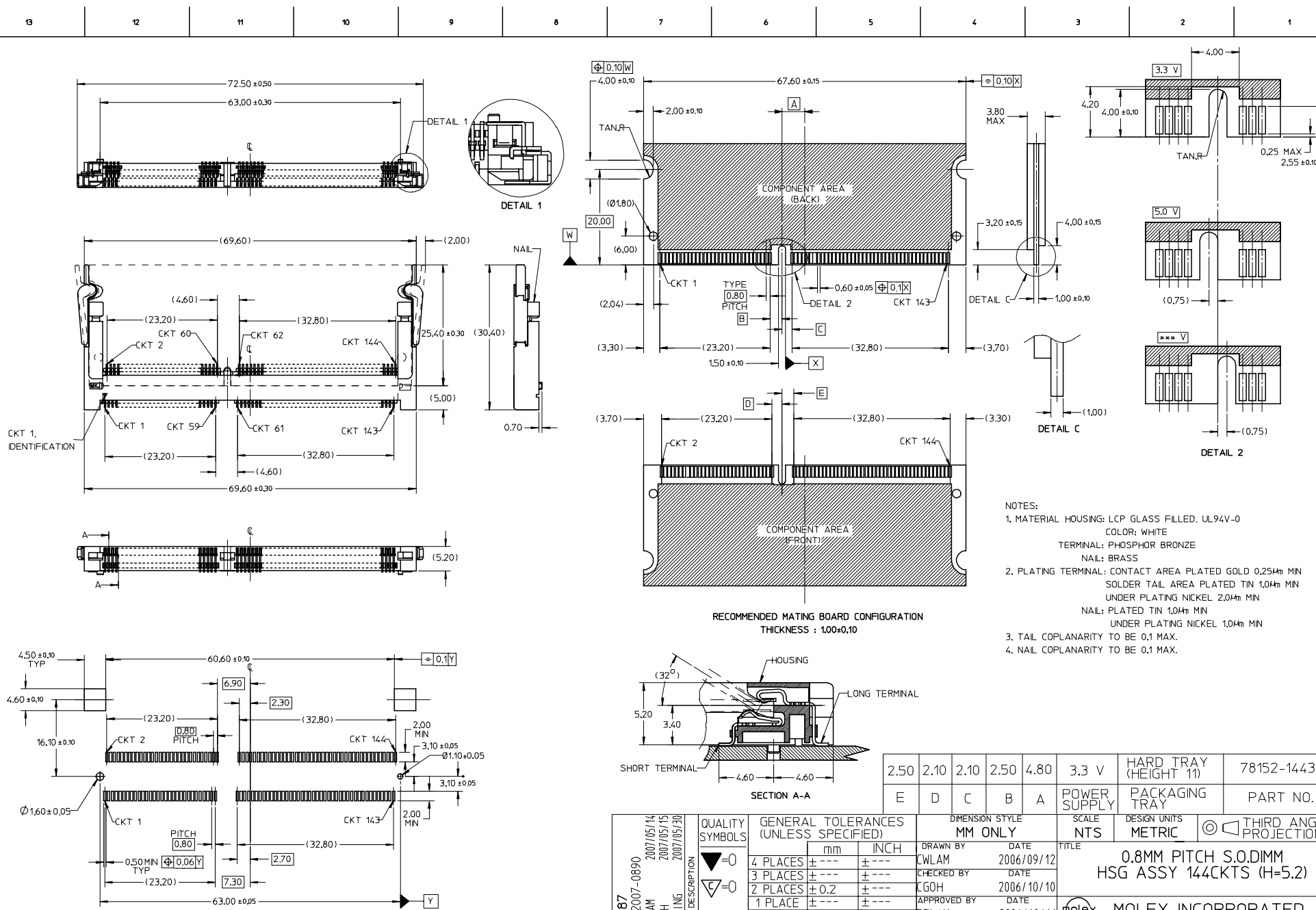
[78152Series](#)

**Mates With**

JEDEC Standard DRAM and SDRAM modules

This document was generated on 04/13/2010

**PLEASE CHECK [WWW.MOLEX.COM](http://WWW.MOLEX.COM) FOR LATEST PART INFORMATION**



- NOTES:
- MATERIAL HOUSING: LCP GLASS FILLED, UL94V-0  
COLOR: WHITE  
TERMINAL: PHOSPHOR BRONZE  
NAIL: BRASS
  - PLATING TERMINAL: CONTACT AREA PLATED GOLD 0.25µm MIN  
SOLDER TAIL AREA PLATED TIN 1.0µm MIN  
UNDER PLATING NICKEL 2.0µm MIN  
NAIL: PLATED TIN 1.0µm MIN  
UNDER PLATING NICKEL 1.0µm MIN
  - TAIL COPLANARITY TO BE 0.1 MAX.
  - NAIL COPLANARITY TO BE 0.1 MAX.

2.50	2.10	2.10	2.50	4.80	3.3 V	HARD TRAY (HEIGHT 11)	78152-1443
E	D	C	B	A	POWER SUPPLY	PACKAGING TRAY	PART NO.

EWR#1087 ELC NO. S2007-0890 DRAWN: CWM 2007/05/14 CHKD: CGH 2007/05/15 APPROX: CLG 2007/05/30	QUALITY SYMBOLS ▽=0 ▽=0	GENERAL TOLERANCES (UNLESS SPECIFIED)		DIMENSION STYLE MM ONLY		SCALE NTS	DESIGN UNITS METRIC	THIRD ANGLE PROJECTION	
		4 PLACES ± --- ± ---	mm INCH	DRAWN BY CWM	DATE 2006/09/12	TITLE 0.8MM PITCH S.O.DIMM HSG ASSY 144CKTS (H=5.2)			
		3 PLACES ± --- ± ---		CHECKED BY CGH	DATE 2006/10/10	MOLEX INCORPORATED			
		2 PLACES ± 0.2 ± ---		APPROVED BY PTLIM	DATE 2006/10/11	MATERIAL NO. DOCUMENT NO. SD-78152-001			
1 PLACE ± --- ± ---		ANGULAR ± 3 °		SEE TABLE		SHEET NO. 1 OF 1			
DRAFT WHERE APPLICABLE MUST REMAIN WITHIN DIMENSIONS		SIZE A2		THIS DRAWING CONTAINS INFORMATION THAT IS PROPRIETARY TO MOLEX INCORPORATED AND SHOULD NOT BE USED WITHOUT WRITTEN PERMISSION					